



## Measurement Report

Measurement Date	December 3, 2024
Client Name	Stephen Lau - RE/MAX Real Estate
Property Address	10-18305 89 Ave NW, Edmonton, AB
Property Type	Condo
Exterior Wall Thickness	N/A
Measurement Equipment	Laser

## Floor Area Totals

	Level	Metric (m <sup>2</sup> )	Imperial (ft <sup>2</sup> )
Main Floor	1	42.07	452.84
Second Floor	2	48.77	524.97
Basement	B	45.46	489.30
<b>Total Above Ground RMS Area</b>		<b>90.84</b>	<b>977.81</b>

## Room Dimensions

	Level	Metric (m)	Imperial (ft)
Living Room	1	3.32 x 6.26	10'11" x 20'6"
Dining Room	1	1.63 x 2.40	5'4" x 7'10"
Kitchen	1	3.48 x 2.40	11'5" x 7'10"
Laundry Room	B	2.92 x 1.62	9'7" x 5'4"
Primary Bedroom	2	3.12 x 4.66	10'3" x 15'3"
Bedroom 2	2	2.65 x 3.56	8'8" x 11'8"
Bedroom 3	2	3.31 x 3.52	10'10" x 11'7"
Den	B	3.22 x 3.83	10'7" x 12'7"
Room	B	2.53 x 5.10	8'4" x 16'9"

## Bathroom Count

	Level	Pieces
Bathroom 1	1	2
Bathroom 2	2	4

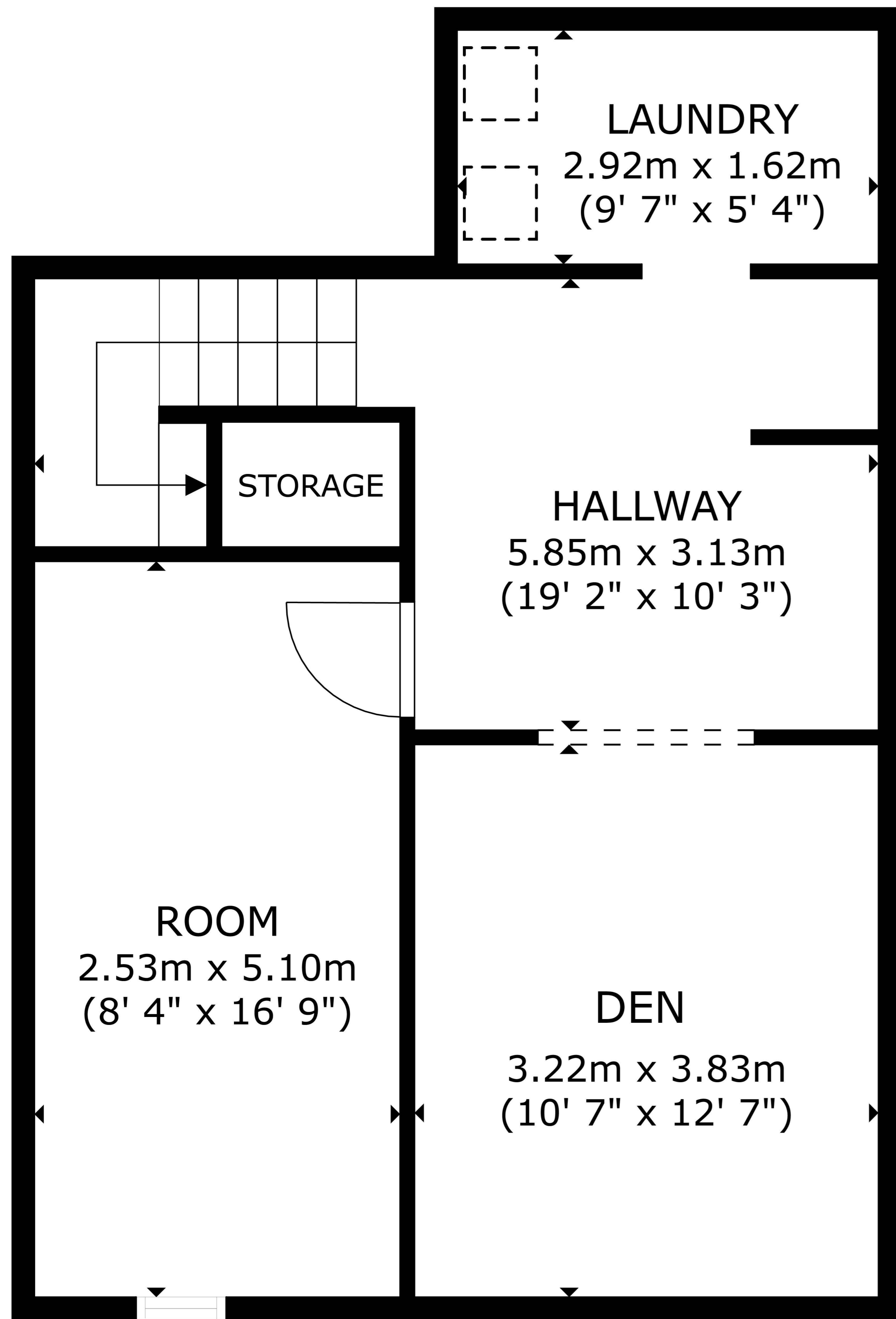
### Measuring Process

Measurements have been completed and verified using the RMS guidelines. Measurements were obtained using lasers for the interior areas.

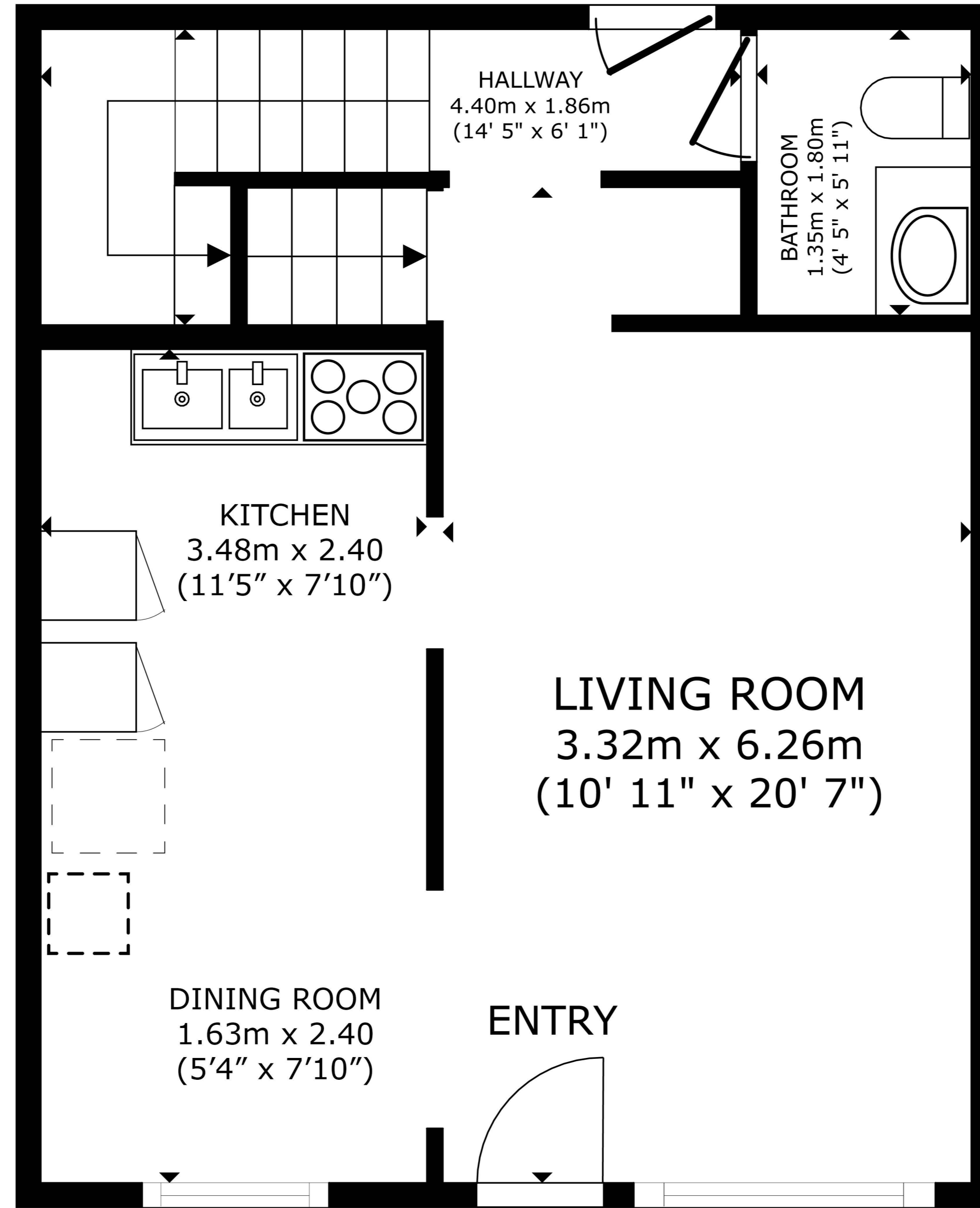
Room dimensions are largest length and width; parts of room may be smaller. Room area is not always equal to product of length and width.

**#10, 18305 89 AVE NW**  
 EDMONTON, AB

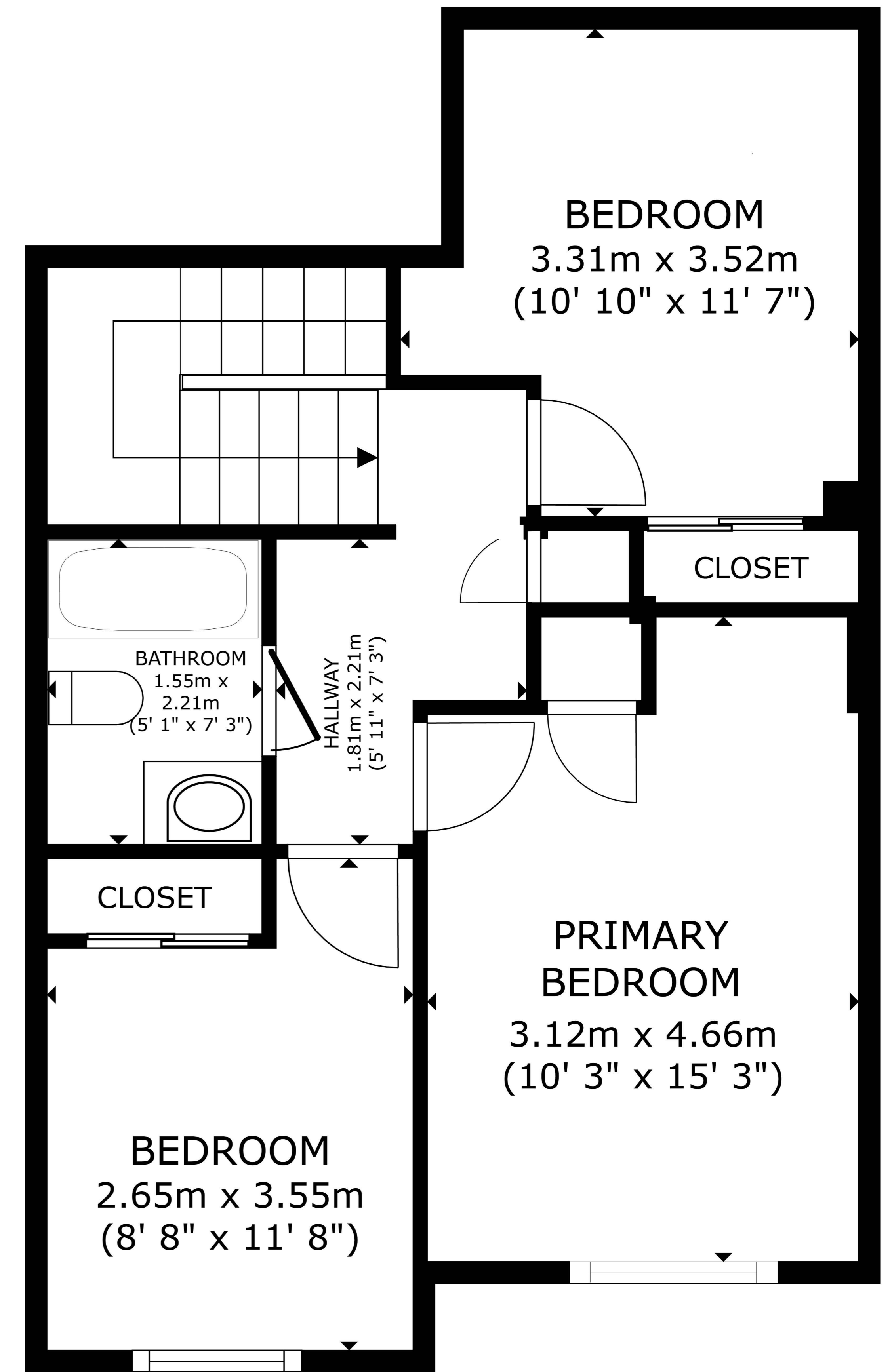
MAIN	453 SQ.FT.
SECOND	525 SQ.FT.
<b>TOTAL</b>	<b>978 SQ.FT.</b>



**BASEMENT**  
 45.46 m<sup>2</sup>(489 sq ft)



**MAIN FLOOR**  
 42.07 m<sup>2</sup>(453 sq ft)



**SECOND FLOOR**  
 48.77 m<sup>2</sup>(525 sq ft)

## Schematics

