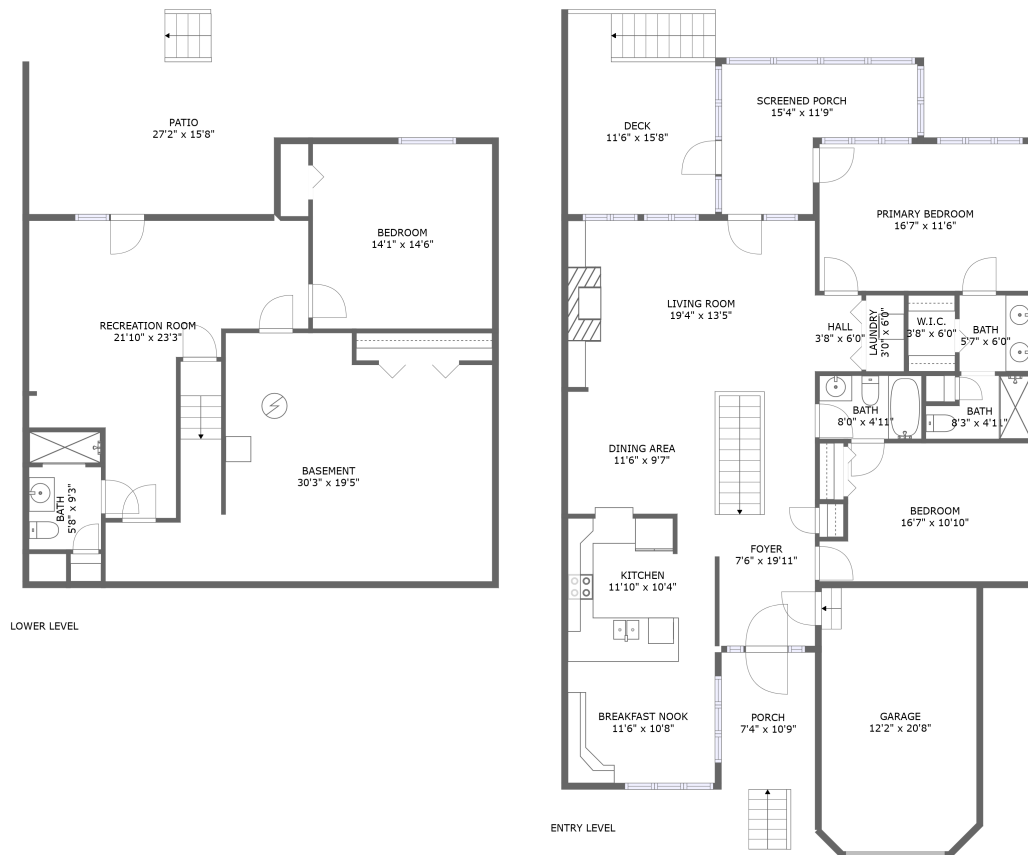



56 Scarlet Street, Westlake Corner, Hardy, Franklin County, Virginia, United States, 24101



Property summary


 **1** Garages

 **3** Bedrooms

 **3** Bathrooms

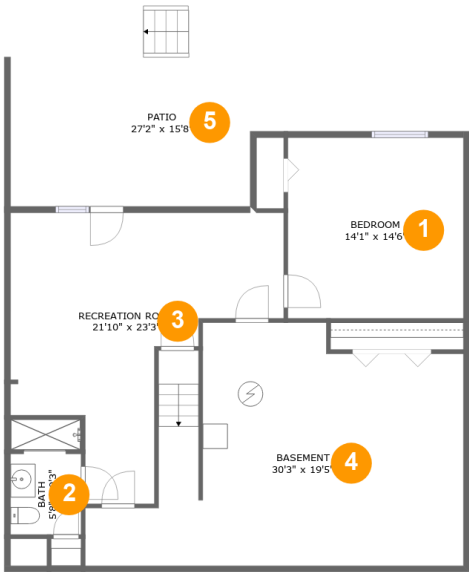
 **0** Half baths

 **2** Floors

 **2,122**
Gross living
area sqft

 **3,632**
Total sqft

56 Scarlet Street, Westlake Corner, Hardy, Franklin
County, Virginia, United States, 24101



Room dimensions

Floor 1 Total sqft: 1503 Living area: 682

#		Dimensions	sqft	Counted as living area
1	Bedroom	14'1" x 14'6"	203 sq. ft	Yes
2	Bath	5'8" x 9'3"	51 sq. ft	Yes
3	Recreation Room	21'10" x 23'3"	321 sq. ft	Yes
4	Basement	30'3" x 19'5"	463 sq. ft	No
5	Patio	27'2" x 15'8"	302 sq. ft	No

56 Scarlet Street, Westlake Corner, Hardy, Franklin County, Virginia, United States, 24101



Room dimensions

Floor 2

Total sqft: 2129 Living area: 1440

#		Dimensions	sqft	Counted as living area
6	Bedroom	16'7" x 10'10"	162 sq. ft	Yes
7	Bath	8'3" x 4'11"	35 sq. ft	Yes
8	Breakfast Nook	11'6" x 10'8"	124 sq. ft	Yes
9	Dining Area	11'6" x 9'7"	114 sq. ft	Yes
10	Screened Porch	15'4" x 11'9"	131 sq. ft	No
11	Bath	5'7" x 6'0"	33 sq. ft	Yes
12	Laundry	3'0" x 6'0"	18 sq. ft	Yes
13	Primary Bedroom	16'7" x 11'6"	191 sq. ft	Yes
14	Living Room	19'4" x 13'5"	258 sq. ft	Yes
15	Hall	3'8" x 6'0"	22 sq. ft	Yes
16	Foyer	7'6" x 19'11"	149 sq. ft	Yes

Scan captured on Wed, 02 Apr 2025 20:42:11 GMT

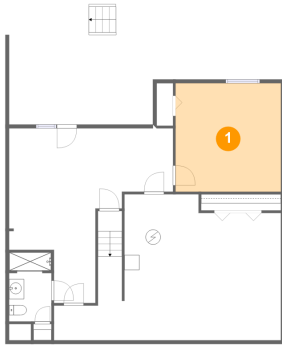
Information is calculated by Cubicasa technology deemed highly reliable but not guaranteed.

**56 Scarlet Street, Westlake Corner, Hardy, Franklin
County, Virginia, United States, 24101**

#		Dimensions	sqft	Counted as living area
17	Garage	12'2" x 20'8"	246 sq. ft	No
18	Porch	7'4" x 10'9"	93 sq. ft	No
19	W.I.C.	3'8" x 6'0"	22 sq. ft	Yes
20	Bath	8'0" x 4'11"	40 sq. ft	Yes
21	Kitchen	11'10" x 10'4"	117 sq. ft	Yes
22	Deck	11'6" x 15'8"	178 sq. ft	No

**56 Scarlet Street, Westlake Corner, Hardy, Franklin
County, Virginia, United States, 24101**

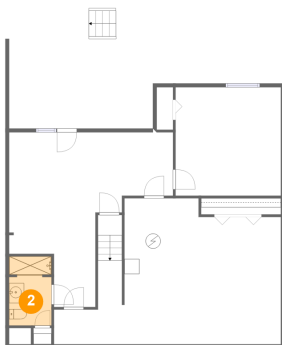
1 Floor 1 - Bedroom



Dimensions: 14'1" x 14'6"
Area: 203 sq. ft
Counted as living area: Yes

Heated: Yes
Finished: Yes
Enclosed: Yes
Contiguous: Yes
Permitted: Yes
Wet space: No
Addition: No
Conversion: No

2 Floor 1 - Bath



Dimensions: 5'8" x 9'3"
Area: 51 sq. ft
Counted as living area: Yes

Heated: Yes
Finished: Yes
Enclosed: Yes
Contiguous: Yes
Permitted: Yes
Wet space: Yes
Addition: No
Conversion: No

**56 Scarlet Street, Westlake Corner, Hardy, Franklin
County, Virginia, United States, 24101**

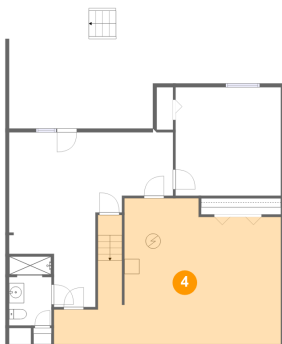
3 Floor 1 - Recreation Room



Dimensions: 21'10" x 23'3"
Area: 321 sq. ft
Counted as living area: Yes

Heated: Yes
Finished: Yes
Enclosed: Yes
Contiguous: Yes
Permitted: Yes
Wet space: No
Addition: No
Conversion: No

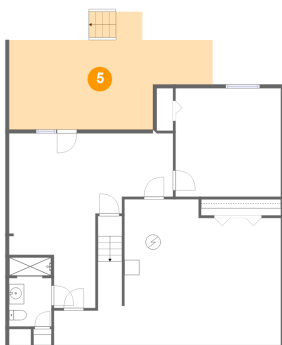
4 Floor 1 - Basement



Dimensions: 30'3" x 19'5"
Area: 463 sq. ft
Counted as living area: No

Heated: Yes
Finished: No
Enclosed: Yes
Contiguous: Yes
Permitted: Yes
Wet space: No
Addition: No
Conversion: No

5 Floor 1 - Patio



Dimensions: 27'2" x 15'8"
Area: 302 sq. ft
Counted as living area: No

Heated: No
Finished: Yes
Enclosed: No
Contiguous: Yes
Permitted: Yes
Wet space: No
Addition: No
Conversion: No

56 Scarlet Street, Westlake Corner, Hardy, Franklin County, Virginia, United States, 24101

6 Floor 2 - Bedroom



Dimensions: 16'7" x 10'10"
Area: 162 sq. ft
Counted as living area: Yes

Heated: Yes
Finished: Yes
Enclosed: Yes
Contiguous: Yes
Permitted: Yes
Wet space: No
Addition: No
Conversion: No

7 Floor 2 - Bath



Dimensions: 8'3" x 4'11"
Area: 35 sq. ft
Counted as living area: Yes

Heated: Yes
Finished: Yes
Enclosed: Yes
Contiguous: Yes
Permitted: Yes
Wet space: Yes
Addition: No
Conversion: No

8 Floor 2 - Breakfast Nook



Dimensions: 11'6" x 10'8"
Area: 124 sq. ft
Counted as living area: Yes

Heated: Yes
Finished: Yes
Enclosed: Yes
Contiguous: Yes
Permitted: Yes
Wet space: No
Addition: No
Conversion: No

56 Scarlet Street, Westlake Corner, Hardy, Franklin County, Virginia, United States, 24101

9 Floor 2 - Dining Area



Dimensions: 11'6" x 9'7"
Area: 114 sq. ft
Counted as living area: Yes

Heated: Yes
Finished: Yes
Enclosed: Yes
Contiguous: Yes
Permitted: Yes
Wet space: No
Addition: No
Conversion: No

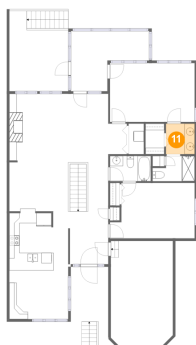
10 Floor 2 - Screened Porch



Dimensions: 15'4" x 11'9"
Area: 131 sq. ft
Counted as living area: No

Heated: No
Finished: Yes
Enclosed: No
Contiguous: Yes
Permitted: Yes
Wet space: No
Addition: No
Conversion: No

11 Floor 2 - Bath



Dimensions: 5'7" x 6'0"
Area: 33 sq. ft
Counted as living area: Yes

Heated: Yes
Finished: Yes
Enclosed: Yes
Contiguous: Yes
Permitted: Yes
Wet space: Yes
Addition: No
Conversion: No

**56 Scarlet Street, Westlake Corner, Hardy, Franklin
County, Virginia, United States, 24101**

12 Floor 2 - Laundry



Dimensions: 3'0" x 6'0"
Area: 18 sq. ft
Counted as living area: Yes

Heated: Yes
Finished: Yes
Enclosed: Yes
Contiguous: Yes
Permitted: Yes
Wet space: No
Addition: No
Conversion: No

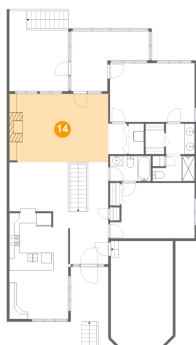
13 Floor 2 - Primary Bedroom



Dimensions: 16'7" x 11'6"
Area: 191 sq. ft
Counted as living area: Yes

Heated: Yes
Finished: Yes
Enclosed: Yes
Contiguous: Yes
Permitted: Yes
Wet space: No
Addition: No
Conversion: No

14 Floor 2 - Living Room



Dimensions: 19'4" x 13'5"
Area: 258 sq. ft
Counted as living area: Yes

Heated: Yes
Finished: Yes
Enclosed: Yes
Contiguous: Yes
Permitted: Yes
Wet space: No
Addition: No
Conversion: No

**56 Scarlet Street, Westlake Corner, Hardy, Franklin
County, Virginia, United States, 24101**

15 Floor 2 - Hall



Dimensions: 3'8" x 6'0"
Area: 22 sq. ft
Counted as living area: Yes

Heated: Yes
Finished: Yes
Enclosed: Yes
Contiguous: Yes
Permitted: Yes
Wet space: No
Addition: No
Conversion: No

16 Floor 2 - Foyer



Dimensions: 7'6" x 19'11"
Area: 149 sq. ft
Counted as living area: Yes

Heated: Yes
Finished: Yes
Enclosed: Yes
Contiguous: Yes
Permitted: Yes
Wet space: No
Addition: No
Conversion: No

17 Floor 2 - Garage



Dimensions: 12'2" x 20'8"
Area: 246 sq. ft
Counted as living area: No

Heated: No
Finished: No
Enclosed: Yes
Contiguous: Yes
Permitted: Yes
Wet space: No
Addition: No
Conversion: No

56 Scarlet Street, Westlake Corner, Hardy, Franklin County, Virginia, United States, 24101

18 Floor 2 - Porch



Dimensions: 7'4" x 10'9"
Area: 93 sq. ft
Counted as living area: No

Heated: No
Finished: Yes
Enclosed: No
Contiguous: Yes
Permitted: Yes
Wet space: No
Addition: No
Conversion: No

19 Floor 2 - W.I.C.



Dimensions: 3'8" x 6'0"
Area: 22 sq. ft
Counted as living area: Yes

Heated: Yes
Finished: Yes
Enclosed: Yes
Contiguous: Yes
Permitted: Yes
Wet space: No
Addition: No
Conversion: No

20 Floor 2 - Bath



Dimensions: 8'0" x 4'11"
Area: 40 sq. ft
Counted as living area: Yes

Heated: Yes
Finished: Yes
Enclosed: Yes
Contiguous: Yes
Permitted: Yes
Wet space: Yes
Addition: No
Conversion: No

**56 Scarlet Street, Westlake Corner, Hardy, Franklin
County, Virginia, United States, 24101**

21 Floor 2 - Kitchen



Dimensions: 11'10" x 10'4"
Area: 117 sq. ft
Counted as living area: Yes

Heated: Yes
Finished: Yes
Enclosed: Yes
Contiguous: Yes
Permitted: Yes
Wet space: No
Addition: No
Conversion: No

22 Floor 2 - Deck



Dimensions: 11'6" x 15'8"
Area: 178 sq. ft
Counted as living area: No

Heated: No
Finished: Yes
Enclosed: No
Contiguous: Yes
Permitted: Yes
Wet space: No
Addition: No
Conversion: No