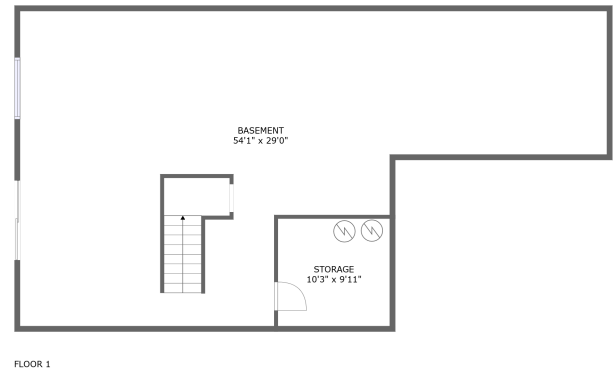
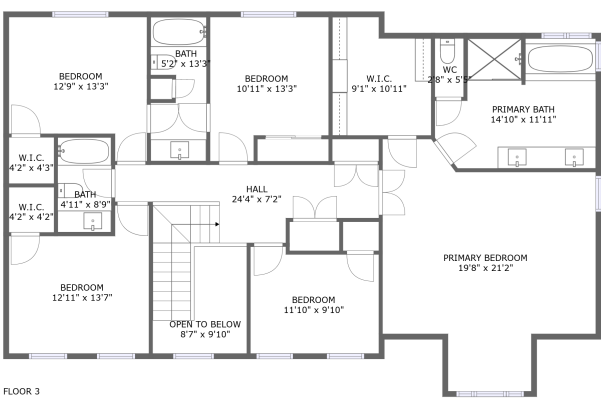
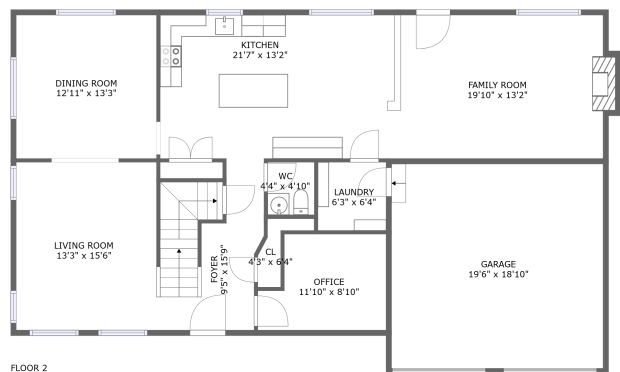



Home report


9347 Southwest Midland Avenue, Cherry Grove, Gaston,  
Washington County, Oregon, United States, 97119




Property summary

 **1** Garages

 **5** Bedrooms

 **3** Bathrooms

 **1** Half baths

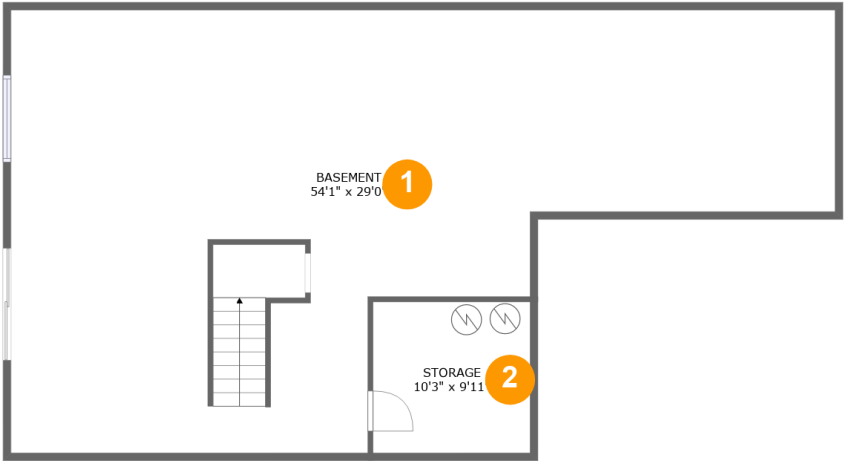
 **3** Floors

 **3,007** Gross living area sqft

 **4,804** Total sqft

Home report

9347 Southwest Midland Avenue, Cherry Grove, Gaston,  
Washington County, Oregon, United States, 97119



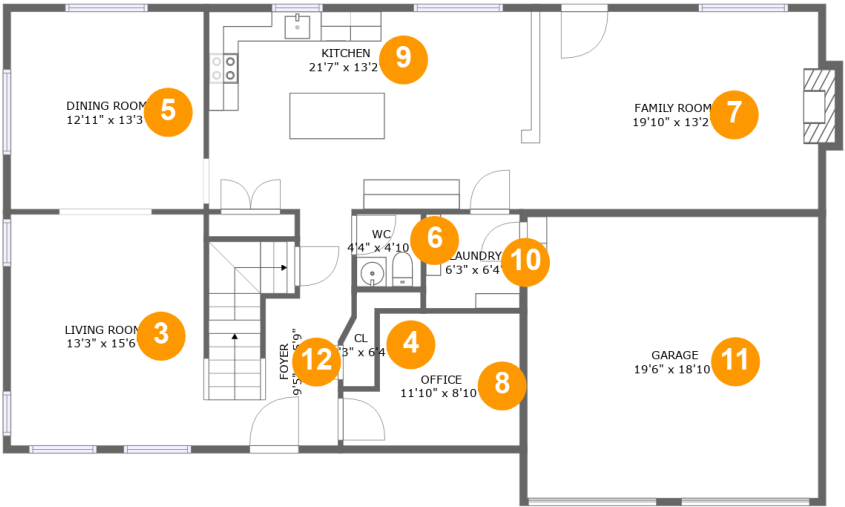
Room dimensions

Floor 1 Total sqft: 1338    Living area: 0

#		Dimensions	sqft	Counted as living area
1	Basement	54'1" x 29'0"	1144 sq. ft	No
2	Storage	10'3" x 9'11"	102 sq. ft	No

Home report

9347 Southwest Midland Avenue, Cherry Grove, Gaston,  
Washington County, Oregon, United States, 97119



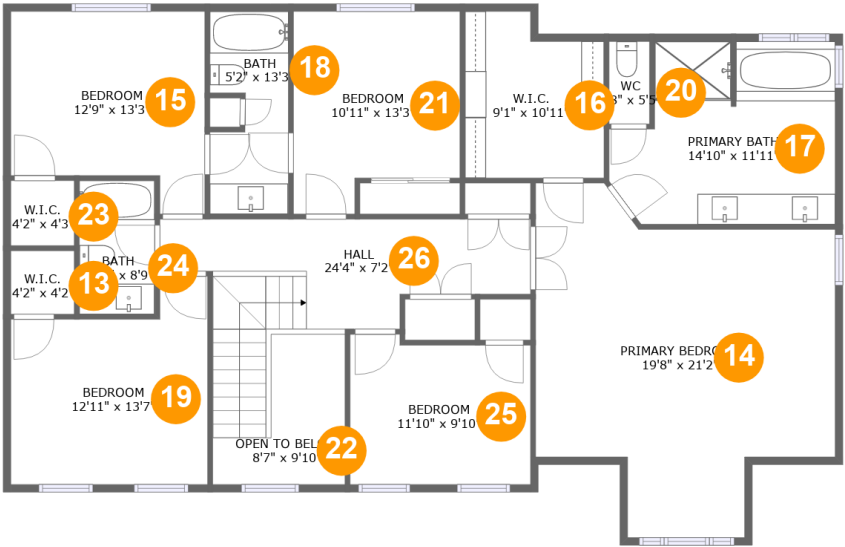
Room dimensions

Floor 2 Total sqft: 1733    Living area: 1338

#		Dimensions	sqft	Counted as living area
3	Living Room	13'3" x 15'6"	202 sq. ft	Yes
4	Cl	4'3" x 6'4"	14 sq. ft	Yes
5	Dining Room	12'11" x 13'3"	171 sq. ft	Yes
6	WC	4'4" x 4'10"	21 sq. ft	Yes
7	Family Room	19'10" x 13'2"	263 sq. ft	Yes
8	Office	11'10" x 8'10"	92 sq. ft	Yes
9	Kitchen	21'7" x 13'2"	282 sq. ft	Yes
10	Laundry	6'3" x 6'4"	40 sq. ft	Yes
11	Garage	19'6" x 18'10"	367 sq. ft	No
12	Foyer	9'5" x 15'9"	128 sq. ft	Yes

Home report

9347 Southwest Midland Avenue, Cherry Grove, Gaston,  
Washington County, Oregon, United States, 97119



Room dimensions

Floor 3 Total sqft: 1733    Living area: 1669

#		Dimensions	sqft	Counted as living area
13	W.I.C.	4'2" x 4'2"	17 sq. ft	Yes
14	Primary Bedroom	19'8" x 21'2"	351 sq. ft	Yes
15	Bedroom	12'9" x 13'3"	144 sq. ft	Yes
16	W.I.C.	9'1" x 10'11"	90 sq. ft	Yes
17	Primary Bath	14'10" x 11'11"	156 sq. ft	Yes
18	Bath	5'2" x 13'3"	62 sq. ft	Yes
19	Bedroom	12'11" x 13'7"	149 sq. ft	Yes
20	WC	2'8" x 5'5"	14 sq. ft	Yes
21	Bedroom	10'11" x 13'3"	129 sq. ft	Yes
22	Open To Below	8'7" x 9'10"	59 sq. ft	No
23	W.I.C.	4'2" x 4'3"	18 sq. ft	Yes

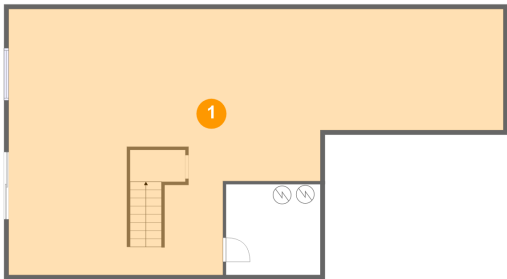
Home report

9347 Southwest Midland Avenue, Cherry Grove, Gaston,  
Washington County, Oregon, United States, 97119

#		Dimensions	sqft	Counted as living area
24	Bath	4'11" x 8'9"	43 sq. ft	Yes
25	Bedroom	11'10" x 9'10"	110 sq. ft	Yes
26	Hall	24'4" x 7'2"	171 sq. ft	Yes

9347 Southwest Midland Avenue, Cherry Grove, Gaston,  
Washington County, Oregon, United States, 97119

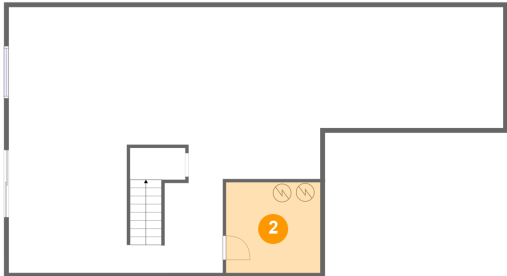
1 Floor 1 - Basement



Dimensions: 54'1" x 29'0"  
Area: 1144 sq. ft  
Counted as living area: No

Heated: Yes  
Finished: No  
Enclosed: Yes  
Contiguous: Yes  
Permitted: Yes  
Wet space: No  
Addition: No  
Conversion: No

2 Floor 1 - Storage



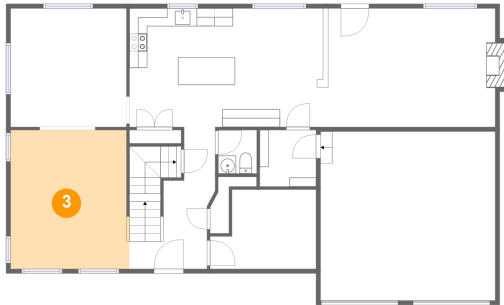
Dimensions: 10'3" x 9'11"  
Area: 102 sq. ft  
Counted as living area: No

Heated: No  
Finished: No  
Enclosed: No  
Contiguous: Yes  
Permitted: Yes  
Wet space: No  
Addition: No  
Conversion: No

## Home report

9347 Southwest Midland Avenue, Cherry Grove, Gaston,  
Washington County, Oregon, United States, 97119

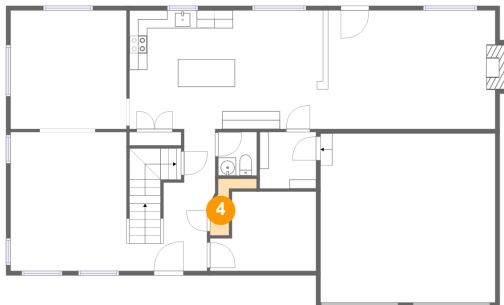
### 3 Floor 2 - Living Room



Dimensions: 13'3" x 15'6"  
Area: 202 sq. ft  
Counted as living area: Yes

Heated: Yes  
Finished: Yes  
Enclosed: Yes  
Contiguous: Yes  
Permitted: Yes  
Wet space: No  
Addition: No  
Conversion: No

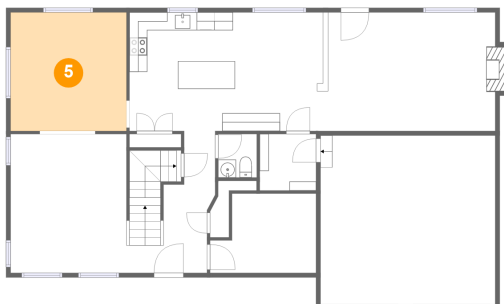
### 4 Floor 2 - Cl



Dimensions: 4'3" x 6'4"  
Area: 14 sq. ft  
Counted as living area: Yes

Heated: Yes  
Finished: Yes  
Enclosed: Yes  
Contiguous: Yes  
Permitted: Yes  
Wet space: No  
Addition: No  
Conversion: No

### 5 Floor 2 - Dining Room



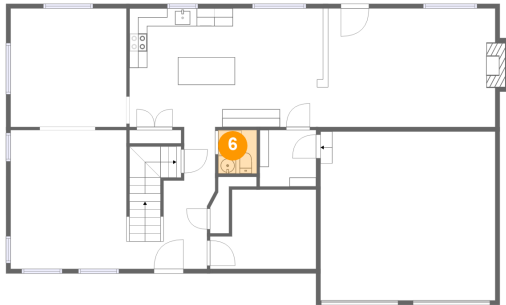
Dimensions: 12'11" x 13'3"  
Area: 171 sq. ft  
Counted as living area: Yes

Heated: Yes  
Finished: Yes  
Enclosed: Yes  
Contiguous: Yes  
Permitted: Yes  
Wet space: No  
Addition: No  
Conversion: No

## Home report

9347 Southwest Midland Avenue, Cherry Grove, Gaston,  
Washington County, Oregon, United States, 97119

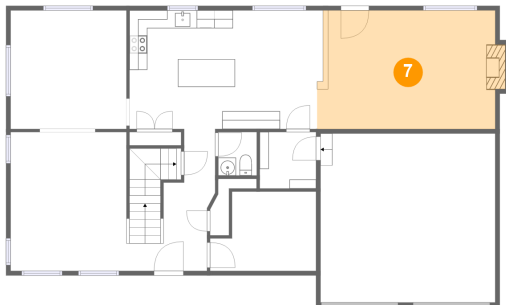
### 6 Floor 2 - WC



Dimensions: 4'4" x 4'10"  
Area: 21 sq. ft  
Counted as living area: Yes

Heated: Yes  
Finished: Yes  
Enclosed: Yes  
Contiguous: Yes  
Permitted: Yes  
Wet space: Yes  
Addition: No  
Conversion: No

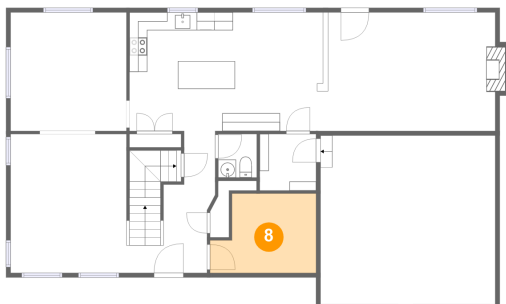
### 7 Floor 2 - Family Room



Dimensions: 19'10" x 13'2"  
Area: 263 sq. ft  
Counted as living area: Yes

Heated: Yes  
Finished: Yes  
Enclosed: Yes  
Contiguous: Yes  
Permitted: Yes  
Wet space: No  
Addition: No  
Conversion: No

### 8 Floor 2 - Office



Dimensions: 11'10" x 8'10"  
Area: 92 sq. ft  
Counted as living area: Yes

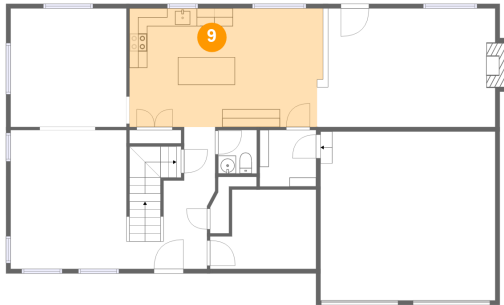
Heated: Yes  
Finished: Yes  
Enclosed: Yes  
Contiguous: Yes  
Permitted: Yes  
Wet space: No  
Addition: No  
Conversion: No



## Home report

9347 Southwest Midland Avenue, Cherry Grove, Gaston,  
Washington County, Oregon, United States, 97119

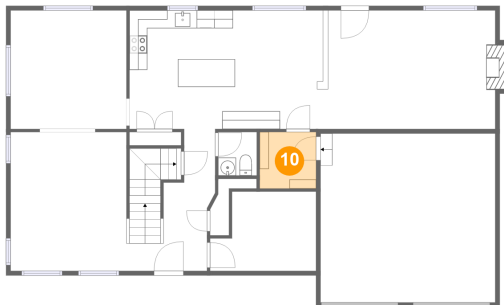
### 9 Floor 2 - Kitchen



Dimensions: 21'7" x 13'2"  
Area: 282 sq. ft  
Counted as living area: Yes

Heated: Yes  
Finished: Yes  
Enclosed: Yes  
Contiguous: Yes  
Permitted: Yes  
Wet space: No  
Addition: No  
Conversion: No

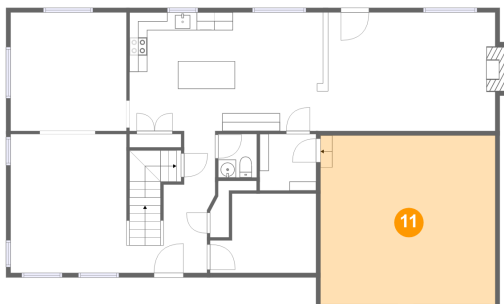
### 10 Floor 2 - Laundry



Dimensions: 6'3" x 6'4"  
Area: 40 sq. ft  
Counted as living area: Yes

Heated: Yes  
Finished: Yes  
Enclosed: Yes  
Contiguous: Yes  
Permitted: Yes  
Wet space: No  
Addition: No  
Conversion: No

### 11 Floor 2 - Garage



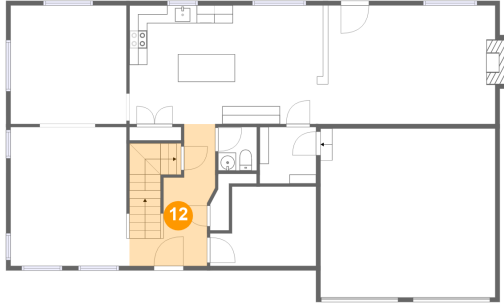
Dimensions: 19'6" x 18'10"  
Area: 367 sq. ft  
Counted as living area: No

Heated: No  
Finished: No  
Enclosed: Yes  
Contiguous: Yes  
Permitted: Yes  
Wet space: No  
Addition: No  
Conversion: No

## Home report

9347 Southwest Midland Avenue, Cherry Grove, Gaston,  
Washington County, Oregon, United States, 97119

### 12 Floor 2 - Foyer



Dimensions: 9'5" x 15'9"  
Area: 128 sq. ft  
Counted as living area: Yes

Heated: Yes  
Finished: Yes  
Enclosed: Yes  
Contiguous: Yes  
Permitted: Yes  
Wet space: No  
Addition: No  
Conversion: No

### 13 Floor 3 - W.I.C.



Dimensions: 4'2" x 4'2"  
Area: 17 sq. ft  
Counted as living area: Yes

Heated: Yes  
Finished: Yes  
Enclosed: Yes  
Contiguous: Yes  
Permitted: Yes  
Wet space: No  
Addition: No  
Conversion: No

### 14 Floor 3 - Primary Bedroom



Dimensions: 19'8" x 21'2"  
Area: 351 sq. ft  
Counted as living area: Yes

Heated: Yes  
Finished: Yes  
Enclosed: Yes  
Contiguous: Yes  
Permitted: Yes  
Wet space: No  
Addition: No  
Conversion: No

## Home report

9347 Southwest Midland Avenue, Cherry Grove, Gaston,  
Washington County, Oregon, United States, 97119

### 15 Floor 3 - Bedroom



Dimensions: 12'9" x 13'3"  
Area: 144 sq. ft  
Counted as living area: Yes

Heated: Yes  
Finished: Yes  
Enclosed: Yes  
Contiguous: Yes  
Permitted: Yes  
Wet space: No  
Addition: No  
Conversion: No

### 16 Floor 3 - W.I.C.



Dimensions: 9'1" x 10'11"  
Area: 90 sq. ft  
Counted as living area: Yes

Heated: Yes  
Finished: Yes  
Enclosed: Yes  
Contiguous: Yes  
Permitted: Yes  
Wet space: No  
Addition: No  
Conversion: No

### 17 Floor 3 - Primary Bath



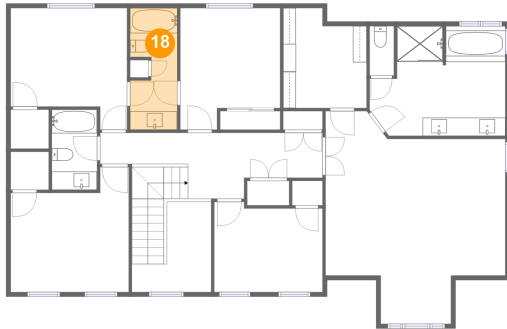
Dimensions: 14'10" x 11'11"  
Area: 156 sq. ft  
Counted as living area: Yes

Heated: Yes  
Finished: Yes  
Enclosed: Yes  
Contiguous: Yes  
Permitted: Yes  
Wet space: Yes  
Addition: No  
Conversion: No

## Home report

9347 Southwest Midland Avenue, Cherry Grove, Gaston,  
Washington County, Oregon, United States, 97119

### 18 Floor 3 - Bath



Dimensions: 5'2" x 13'3"  
Area: 62 sq. ft  
Counted as living area: Yes

Heated: Yes  
Finished: Yes  
Enclosed: Yes  
Contiguous: Yes  
Permitted: Yes  
Wet space: Yes  
Addition: No  
Conversion: No

### 19 Floor 3 - Bedroom



Dimensions: 12'11" x 13'7"  
Area: 149 sq. ft  
Counted as living area: Yes

Heated: Yes  
Finished: Yes  
Enclosed: Yes  
Contiguous: Yes  
Permitted: Yes  
Wet space: No  
Addition: No  
Conversion: No

### 20 Floor 3 - WC



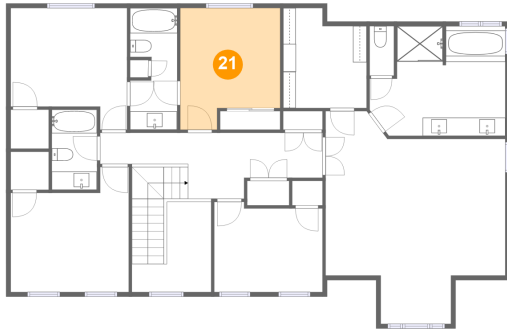
Dimensions: 2'8" x 5'5"  
Area: 14 sq. ft  
Counted as living area: Yes

Heated: Yes  
Finished: Yes  
Enclosed: Yes  
Contiguous: Yes  
Permitted: Yes  
Wet space: Yes  
Addition: No  
Conversion: No

## Home report

9347 Southwest Midland Avenue, Cherry Grove, Gaston,  
Washington County, Oregon, United States, 97119

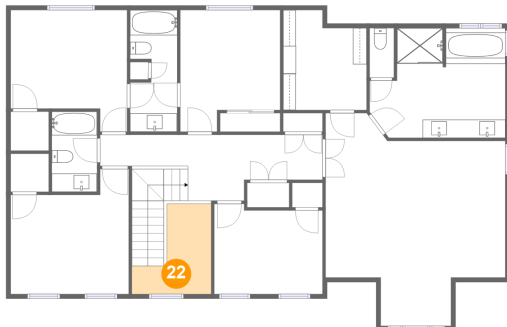
### 21 Floor 3 - Bedroom



Dimensions: 10'11" x 13'3"  
Area: 129 sq. ft  
Counted as living area: Yes

Heated: Yes  
Finished: Yes  
Enclosed: Yes  
Contiguous: Yes  
Permitted: Yes  
Wet space: No  
Addition: No  
Conversion: No

### 22 Floor 3 - Open To Below



Dimensions: 8'7" x 9'10"  
Area: 59 sq. ft  
Counted as living area: No

Heated: No  
Finished: No  
Enclosed: No  
Contiguous: Yes  
Permitted: No  
Wet space: No  
Addition: No  
Conversion: No

### 23 Floor 3 - W.I.C.



Dimensions: 4'2" x 4'3"  
Area: 18 sq. ft  
Counted as living area: Yes

Heated: Yes  
Finished: Yes  
Enclosed: Yes  
Contiguous: Yes  
Permitted: Yes  
Wet space: No  
Addition: No  
Conversion: No

9347 Southwest Midland Avenue, Cherry Grove, Gaston,  
Washington County, Oregon, United States, 97119

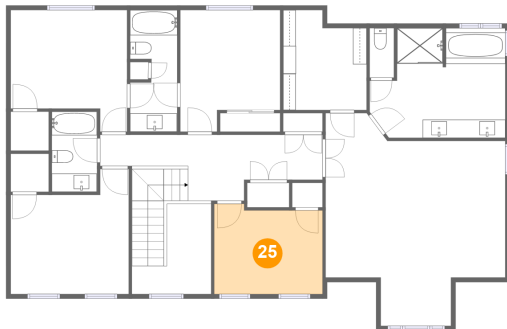
### 24 Floor 3 - Bath



Dimensions: 4'11" x 8'9"  
Area: 43 sq. ft  
Counted as living area: Yes

Heated: Yes  
Finished: Yes  
Enclosed: Yes  
Contiguous: Yes  
Permitted: Yes  
Wet space: Yes  
Addition: No  
Conversion: No

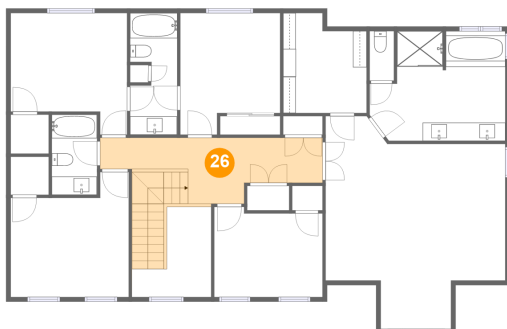
### 25 Floor 3 - Bedroom



Dimensions: 11'10" x 9'10"  
Area: 110 sq. ft  
Counted as living area: Yes

Heated: Yes  
Finished: Yes  
Enclosed: Yes  
Contiguous: Yes  
Permitted: Yes  
Wet space: No  
Addition: No  
Conversion: No

### 26 Floor 3 - Hall



Dimensions: 24'4" x 7'2"  
Area: 171 sq. ft  
Counted as living area: Yes

Heated: Yes  
Finished: Yes  
Enclosed: Yes  
Contiguous: Yes  
Permitted: Yes  
Wet space: No  
Addition: No  
Conversion: No