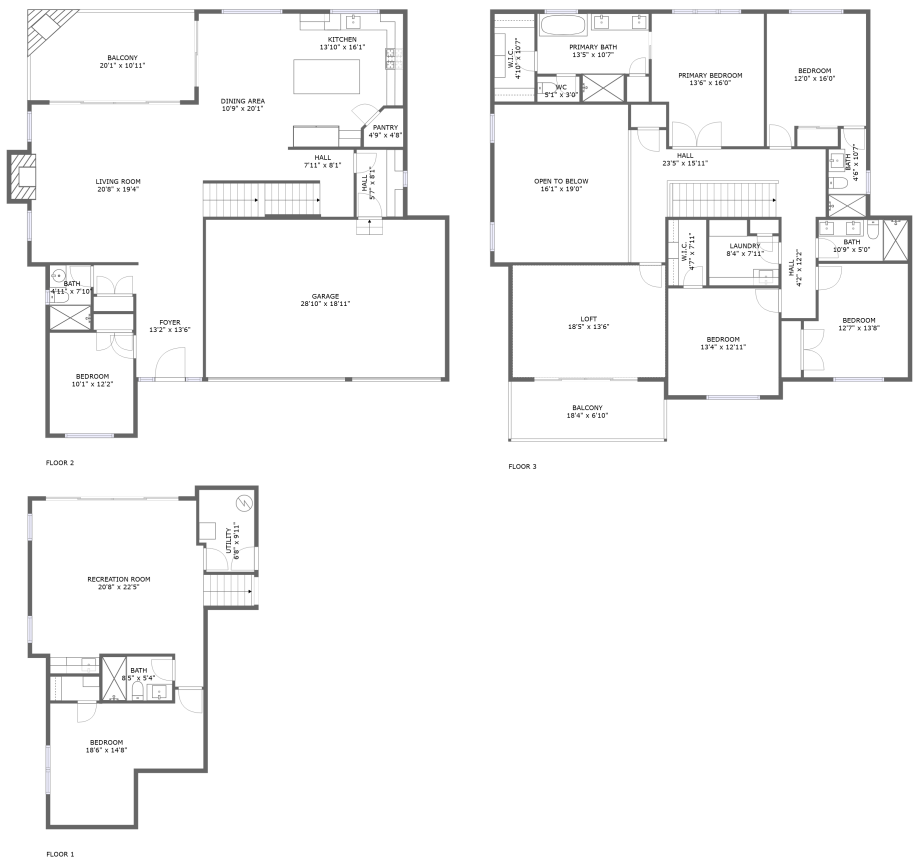


Home report

18520 83rd Avenue Northeast, Kenmore, King County,
Washington, United States, 98028




Total Area: 3853 sq. ft

Below Ground: 791 sq. ft, Floor 2: 1315 sq. ft, Floor 3: 1747 sq. ft


Excluded: Garage 547 sq. ft, Balcony 341 sq. ft, Fireplace 16 sq. ft, Open to below 306 sq. ft, Walls: 277 sq. ft

Property summary

**3**
Floors

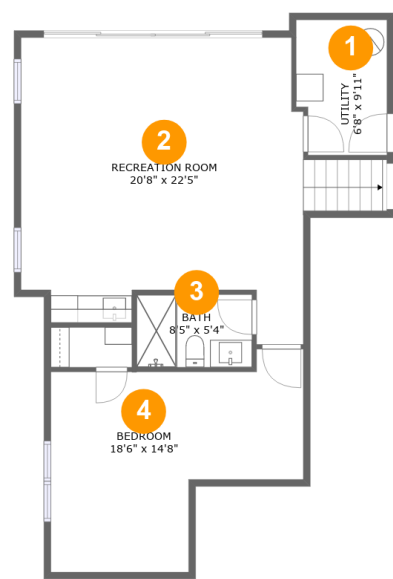
**6**
Bedrooms

**5**
Bathrooms

**1**
Garages

Home report

18520 83rd Avenue Northeast, Kenmore, King County,
Washington, United States, 98028



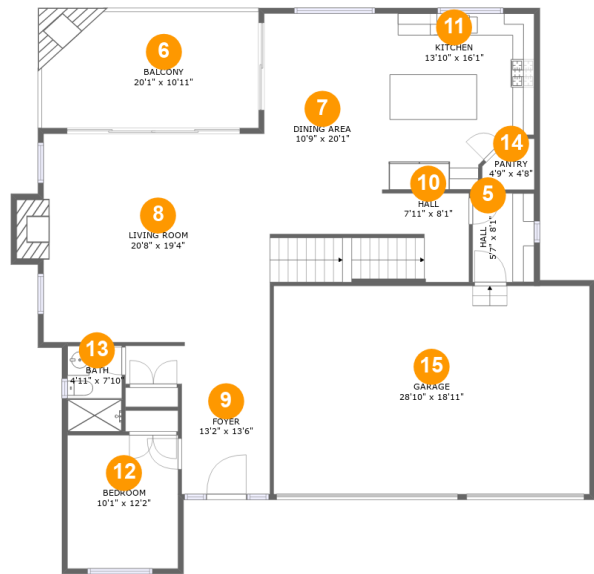
Room dimensions

Floor 1 Below ground Total:791sqft Excluded: 0sqft

#		Max Dimensions	sqft	Included
1	Utility	6'8" x 9'11"	63 sq. ft	Yes
2	Recreation Room	20'8" x 22'5"	427 sq. ft	Yes
3	Bath	8'5" x 5'4"	45 sq. ft	Yes
4	Bedroom	18'6" x 14'8"	219 sq. ft	Yes

Home report

18520 83rd Avenue Northeast, Kenmore, King County,
Washington, United States, 98028



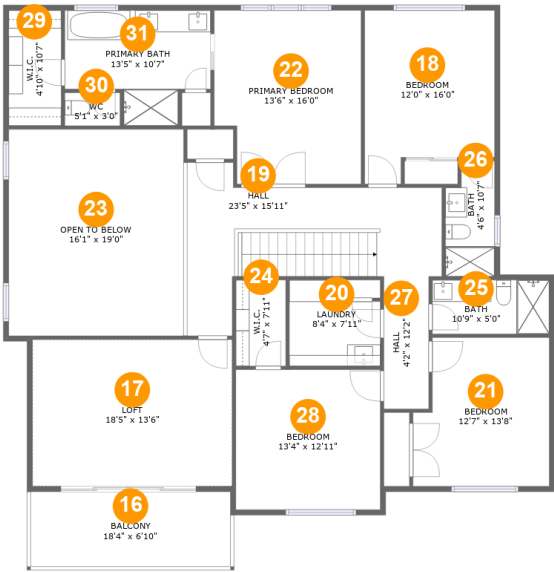
Room dimensions

Floor 2 Total:1315sqft Excluded: 777sqft

#		Max Dimensions	sqft	Included
5	Hall	5'7" x 8'1"	46 sq. ft	Yes
6	Balcony	20'1" x 10'11"	214 sq. ft	No
7	Dining Area	10'9" x 20'1"	256 sq. ft	Yes
8	Living Room	20'8" x 19'4"	408 sq. ft	Yes
9	Foyer	13'2" x 13'6"	126 sq. ft	Yes
10	Hall	7'11" x 8'1"	64 sq. ft	Yes
11	Kitchen	13'10" x 16'1"	201 sq. ft	Yes
12	Bedroom	10'1" x 12'2"	123 sq. ft	Yes
13	Bath	4'11" x 7'10"	39 sq. ft	Yes
14	Pantry	4'9" x 4'8"	19 sq. ft	Yes
15	Garage	28'10" x 18'11"	547 sq. ft	No

Home report

18520 83rd Avenue Northeast, Kenmore, King County,
Washington, United States, 98028



Room dimensions

Floor 3 Total:1747sqft Excluded: 433sqft

#		Max Dimensions	sqft	Included
16	Balcony	18'4" x 6'10"	127 sq. ft	No
17	Loft	18'5" x 13'6"	249 sq. ft	Yes
18	Bedroom	12'0" x 16'0"	170 sq. ft	Yes
19	Hall	23'5" x 15'11"	229 sq. ft	Yes
20	Laundry	8'4" x 7'11"	59 sq. ft	Yes
21	Bedroom	12'7" x 13'8"	159 sq. ft	Yes
22	Primary Bedroom	13'6" x 16'0"	205 sq. ft	Yes
23	Open To Below	16'1" x 19'0"	306 sq. ft	No
24	W.I.C.	4'7" x 7'11"	36 sq. ft	Yes
25	Bath	10'9" x 5'0"	53 sq. ft	Yes
26	Bath	4'6" x 10'7"	44 sq. ft	Yes

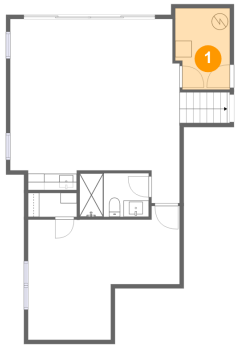
Home report

**18520 83rd Avenue Northeast, Kenmore, King County,
Washington, United States, 98028**

#		Max Dimensions	sqft	Included
27	Hall	4'2" x 12'2"	50 sq. ft	Yes
28	Bedroom	13'4" x 12'11"	171 sq. ft	Yes
29	W.I.C.	4'10" x 10'7"	51 sq. ft	Yes
30	WC	5'1" x 3'0"	15 sq. ft	Yes
31	Primary Bath	13'5" x 10'7"	114 sq. ft	Yes

18520 83rd Avenue Northeast, Kenmore, King County,
Washington, United States, 98028

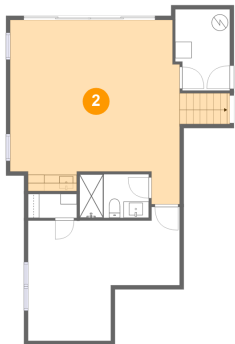
1 Floor 1 - Utility



Max Dimensions: 6'8" x 9'11"
Calculated Area: 63 sq. ft
Included: Yes

Heated: Yes
Finished: Yes
Enclosed: Yes
Contiguous: Yes
Permitted: Yes
Wet space: No
Addition: No
Conversion: No

2 Floor 1 - Recreation Room

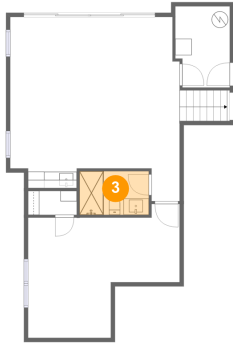


Max Dimensions: 20'8" x 22'5"
Calculated Area: 427 sq. ft
Included: Yes

Heated: Yes
Finished: Yes
Enclosed: Yes
Contiguous: Yes
Permitted: Yes
Wet space: No
Addition: No
Conversion: No

18520 83rd Avenue Northeast, Kenmore, King County,
Washington, United States, 98028

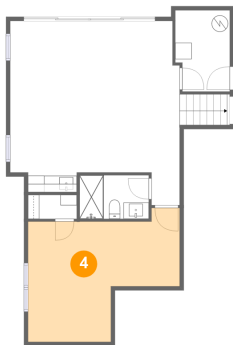
3 Floor 1 - Bath



Max Dimensions: 8'5" x 5'4"
Calculated Area: 45 sq. ft
Included: Yes

Heated: Yes
Finished: Yes
Enclosed: Yes
Contiguous: Yes
Permitted: Yes
Wet space: Yes
Addition: No
Conversion: No

4 Floor 1 - Bedroom



Max Dimensions: 18'6" x 14'8"
Calculated Area: 219 sq. ft
Included: Yes

Heated: Yes
Finished: Yes
Enclosed: Yes
Contiguous: Yes
Permitted: Yes
Wet space: No
Addition: No
Conversion: No

5 Floor 2 - Hall



Max Dimensions: 5'7" x 8'1"
Calculated Area: 46 sq. ft
Included: Yes

Heated: Yes
Finished: Yes
Enclosed: Yes
Contiguous: Yes
Permitted: Yes
Wet space: No
Addition: No
Conversion: No

18520 83rd Avenue Northeast, Kenmore, King County,
Washington, United States, 98028

6 Floor 2 - Balcony



Max Dimensions: 20'1" x 10'11"
Calculated Area: 214 sq. ft
Included: No

Heated: No
Finished: Yes
Enclosed: No
Contiguous: Yes
Permitted: Yes
Wet space: No
Addition: No
Conversion: No

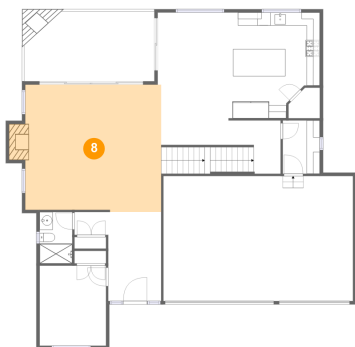
7 Floor 2 - Dining Area



Max Dimensions: 10'9" x 20'1"
Calculated Area: 256 sq. ft
Included: Yes

Heated: Yes
Finished: Yes
Enclosed: Yes
Contiguous: Yes
Permitted: Yes
Wet space: No
Addition: No
Conversion: No

8 Floor 2 - Living Room



Max Dimensions: 20'8" x 19'4"
Calculated Area: 408 sq. ft
Included: Yes

Heated: Yes
Finished: Yes
Enclosed: Yes
Contiguous: Yes
Permitted: Yes
Wet space: No
Addition: No
Conversion: No

18520 83rd Avenue Northeast, Kenmore, King County,
Washington, United States, 98028

9 Floor 2 - Foyer



Max Dimensions: 13'2" x 13'6"
Calculated Area: 126 sq. ft
Included: Yes

Heated: Yes
Finished: Yes
Enclosed: Yes
Contiguous: Yes
Permitted: Yes
Wet space: No
Addition: No
Conversion: No

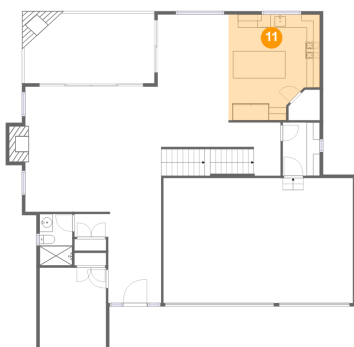
10 Floor 2 - Hall



Max Dimensions: 7'11" x 8'1"
Calculated Area: 64 sq. ft
Included: Yes

Heated: Yes
Finished: Yes
Enclosed: Yes
Contiguous: Yes
Permitted: Yes
Wet space: No
Addition: No
Conversion: No

11 Floor 2 - Kitchen

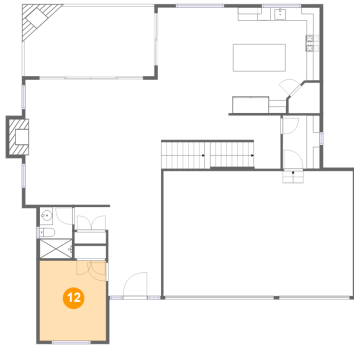


Max Dimensions: 13'10" x 16'1"
Calculated Area: 201 sq. ft
Included: Yes

Heated: Yes
Finished: Yes
Enclosed: Yes
Contiguous: Yes
Permitted: Yes
Wet space: No
Addition: No
Conversion: No

18520 83rd Avenue Northeast, Kenmore, King County,
Washington, United States, 98028

12 Floor 2 - Bedroom



Max Dimensions: 10'1" x 12'2"
Calculated Area: 123 sq. ft
Included: Yes

Heated: Yes
Finished: Yes
Enclosed: Yes
Contiguous: Yes
Permitted: Yes
Wet space: No
Addition: No
Conversion: No

13 Floor 2 - Bath



Max Dimensions: 4'11" x 7'10"
Calculated Area: 39 sq. ft
Included: Yes

Heated: Yes
Finished: Yes
Enclosed: Yes
Contiguous: Yes
Permitted: Yes
Wet space: Yes
Addition: No
Conversion: No

14 Floor 2 - Pantry



Max Dimensions: 4'9" x 4'8"
Calculated Area: 19 sq. ft
Included: Yes

Heated: Yes
Finished: Yes
Enclosed: Yes
Contiguous: Yes
Permitted: Yes
Wet space: No
Addition: No
Conversion: No

Home report

18520 83rd Avenue Northeast, Kenmore, King County,
Washington, United States, 98028

15 Floor 2 - Garage



Max Dimensions: 28'10" x 18'11"
Calculated Area: 547 sq. ft
Included: No

Heated: No
Finished: No
Enclosed: Yes
Contiguous: Yes
Permitted: Yes
Wet space: No
Addition: No
Conversion: No

16 Floor 3 - Balcony



Max Dimensions: 18'4" x 6'10"
Calculated Area: 127 sq. ft
Included: No

Heated: No
Finished: Yes
Enclosed: No
Contiguous: Yes
Permitted: Yes
Wet space: No
Addition: No
Conversion: No

17 Floor 3 - Loft

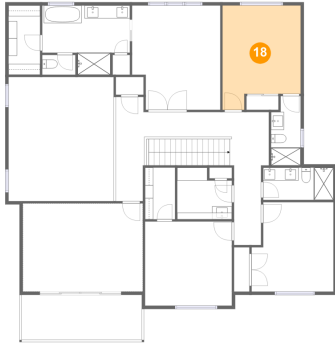


Max Dimensions: 18'5" x 13'6"
Calculated Area: 249 sq. ft
Included: Yes

Heated: Yes
Finished: Yes
Enclosed: Yes
Contiguous: Yes
Permitted: Yes
Wet space: No
Addition: No
Conversion: No

18520 83rd Avenue Northeast, Kenmore, King County,
Washington, United States, 98028

18 Floor 3 - Bedroom



Max Dimensions: 12'0" x 16'0"
Calculated Area: 170 sq. ft
Included: Yes

Heated: Yes
Finished: Yes
Enclosed: Yes
Contiguous: Yes
Permitted: Yes
Wet space: No
Addition: No
Conversion: No

19 Floor 3 - Hall



Max Dimensions: 23'5" x 15'11"
Calculated Area: 229 sq. ft
Included: Yes

Heated: Yes
Finished: Yes
Enclosed: Yes
Contiguous: Yes
Permitted: Yes
Wet space: No
Addition: No
Conversion: No

20 Floor 3 - Laundry

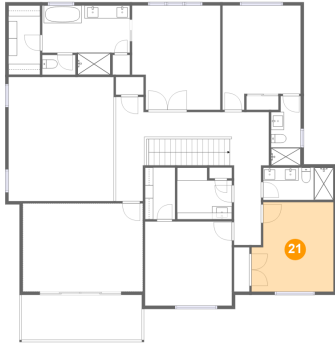


Max Dimensions: 8'4" x 7'11"
Calculated Area: 59 sq. ft
Included: Yes

Heated: Yes
Finished: Yes
Enclosed: Yes
Contiguous: Yes
Permitted: Yes
Wet space: No
Addition: No
Conversion: No

18520 83rd Avenue Northeast, Kenmore, King County,
Washington, United States, 98028

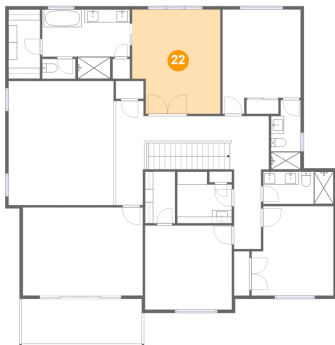
21 Floor 3 - Bedroom



Max Dimensions: 12'7" x 13'8"
Calculated Area: 159 sq. ft
Included: Yes

Heated: Yes
Finished: Yes
Enclosed: Yes
Contiguous: Yes
Permitted: Yes
Wet space: No
Addition: No
Conversion: No

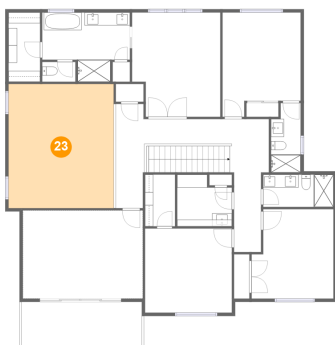
22 Floor 3 - Primary Bedroom



Max Dimensions: 13'6" x 16'0"
Calculated Area: 205 sq. ft
Included: Yes

Heated: Yes
Finished: Yes
Enclosed: Yes
Contiguous: Yes
Permitted: Yes
Wet space: No
Addition: No
Conversion: No

23 Floor 3 - Open To Below



Max Dimensions: 16'1" x 19'0"
Calculated Area: 306 sq. ft
Included: No

Heated: No
Finished: No
Enclosed: No
Contiguous: Yes
Permitted: No
Wet space: No
Addition: No
Conversion: No

18520 83rd Avenue Northeast, Kenmore, King County,
Washington, United States, 98028

24 Floor 3 - W.I.C.



Max Dimensions: 4'7" x 7'11"
Calculated Area: 36 sq. ft
Included: Yes

Heated: Yes
Finished: Yes
Enclosed: Yes
Contiguous: Yes
Permitted: Yes
Wet space: No
Addition: No
Conversion: No

25 Floor 3 - Bath



Max Dimensions: 10'9" x 5'0"
Calculated Area: 53 sq. ft
Included: Yes

Heated: Yes
Finished: Yes
Enclosed: Yes
Contiguous: Yes
Permitted: Yes
Wet space: Yes
Addition: No
Conversion: No

26 Floor 3 - Bath



Max Dimensions: 4'6" x 10'7"
Calculated Area: 44 sq. ft
Included: Yes

Heated: Yes
Finished: Yes
Enclosed: Yes
Contiguous: Yes
Permitted: Yes
Wet space: Yes
Addition: No
Conversion: No

18520 83rd Avenue Northeast, Kenmore, King County,
Washington, United States, 98028

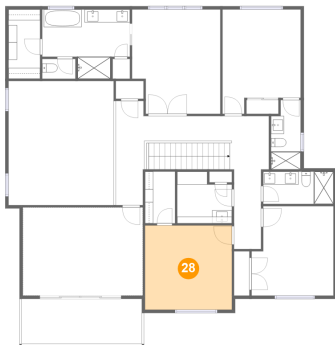
27 Floor 3 - Hall



Max Dimensions: 4'2" x 12'2"
Calculated Area: 50 sq. ft
Included: Yes

Heated: Yes
Finished: Yes
Enclosed: Yes
Contiguous: Yes
Permitted: Yes
Wet space: No
Addition: No
Conversion: No

28 Floor 3 - Bedroom



Max Dimensions: 13'4" x 12'11"
Calculated Area: 171 sq. ft
Included: Yes

Heated: Yes
Finished: Yes
Enclosed: Yes
Contiguous: Yes
Permitted: Yes
Wet space: No
Addition: No
Conversion: No

29 Floor 3 - W.I.C.



Max Dimensions: 4'10" x 10'7"
Calculated Area: 51 sq. ft
Included: Yes

Heated: Yes
Finished: Yes
Enclosed: Yes
Contiguous: Yes
Permitted: Yes
Wet space: No
Addition: No
Conversion: No

18520 83rd Avenue Northeast, Kenmore, King County,
Washington, United States, 98028

30 Floor 3 - WC



Max Dimensions: 5'1" x 3'0"
Calculated Area: 15 sq. ft
Included: Yes

Heated: Yes
Finished: Yes
Enclosed: Yes
Contiguous: Yes
Permitted: Yes
Wet space: Yes
Addition: No
Conversion: No

31 Floor 3 - Primary Bath



Max Dimensions: 13'5" x 10'7"
Calculated Area: 114 sq. ft
Included: Yes

Heated: Yes
Finished: Yes
Enclosed: Yes
Contiguous: Yes
Permitted: Yes
Wet space: Yes
Addition: No
Conversion: No