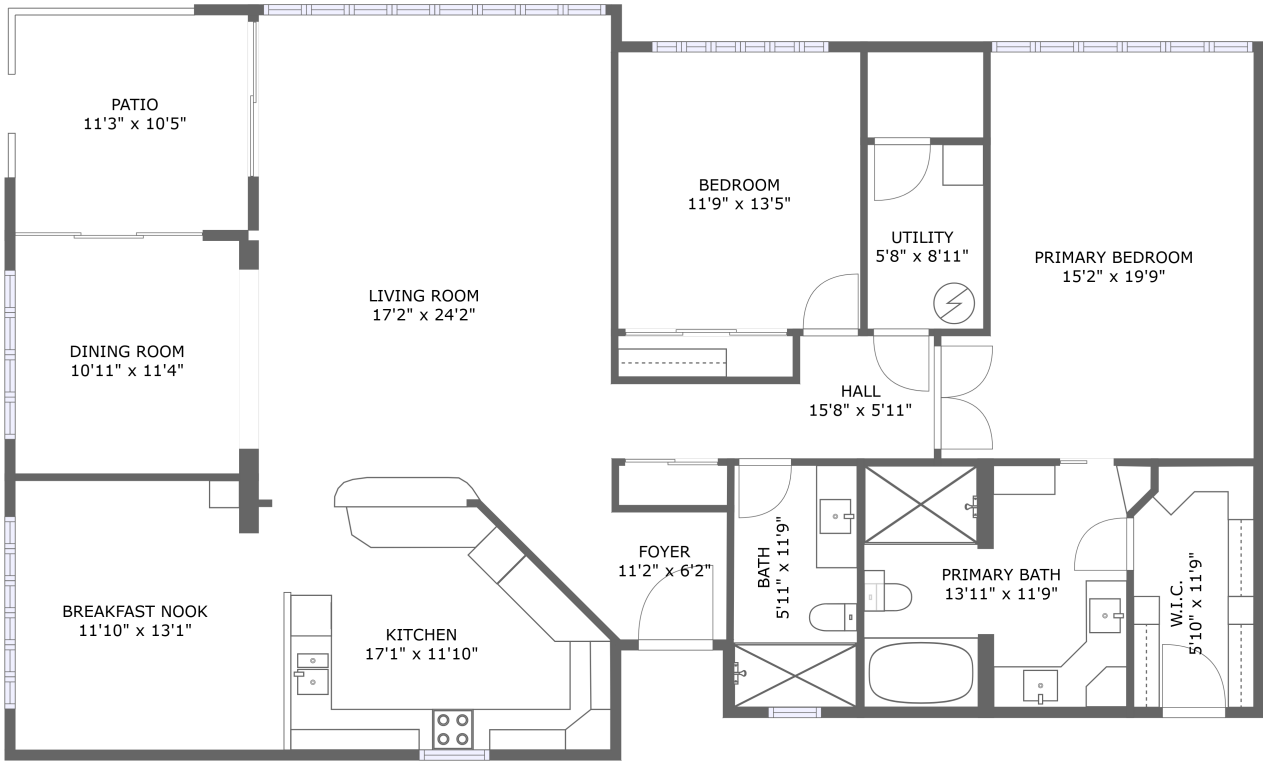



700 Island Way, Clearwater Beach, Pinellas County, Florida, United States, 33767, 106



FLOOR 1

Property summary


 **0** Garages

 **2** Bedrooms

 **2** Bathrooms

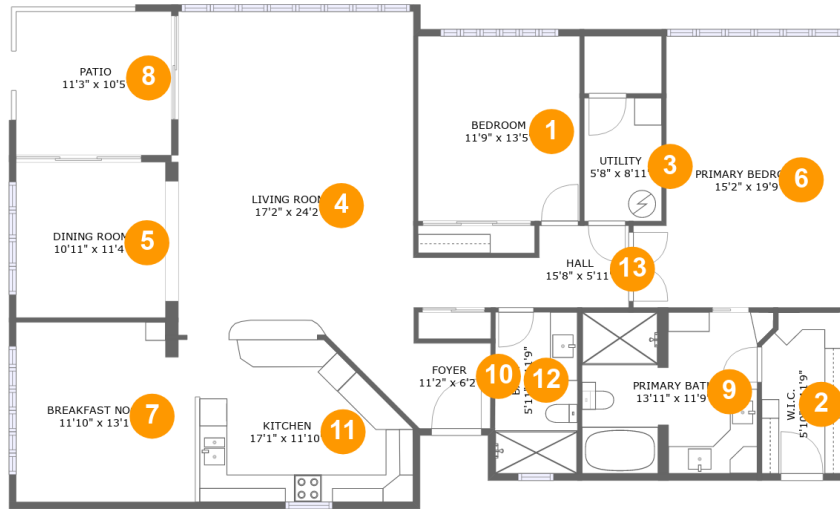
 **0** Half baths

 **1** Floors

 **1,878** Gross living area sqft

 **1,996** Total sqft

700 Island Way, Clearwater Beach, Pinellas County, Florida, United States, 33767, 106



Room dimensions

Floor 1

Total sqft: 1996

Living area: 1878

#		Dimensions	sqft	Counted as living area
1	Bedroom	11'9" x 13'5"	158 sq. ft	Yes
2	Cl	5'10" x 11'9"	66 sq. ft	Yes
3	Utility	5'8" x 8'11"	50 sq. ft	Yes
4	Living Room	17'2" x 24'2"	410 sq. ft	Yes
5	Dining Room	10'11" x 11'4"	123 sq. ft	Yes
6	Bedroom	15'2" x 19'9"	267 sq. ft	Yes
7	Nook	11'10" x 13'1"	152 sq. ft	Yes
8	Outdoor	11'3" x 10'5"	118 sq. ft	No
9	Bath	13'11" x 11'9"	146 sq. ft	Yes
10	Entry	11'2" x 6'2"	51 sq. ft	Yes
11	Kitchen	17'1" x 11'10"	181 sq. ft	Yes

Scan captured on Wed, 30 Oct 2024 17:38:33 GMT

Information is calculated by Cubicasa technology deemed highly reliable but not guaranteed.

**700 Island Way, Clearwater Beach, Pinellas
County, Florida, United States, 33767, 106**

#		Dimensions	sqft	Counted as living area
12	Bath	5'11" x 11'9"	70 sq. ft	Yes
13	Hall	15'8" x 5'11"	72 sq. ft	Yes

700 Island Way, Clearwater Beach, Pinellas County, Florida, United States, 33767, 106

1 Floor 1 - Bedroom



Dimensions: 11'9" x 13'5"
Area: 158 sq. ft
Counted as living area: Yes

Heated: Yes
Finished: Yes
Enclosed: Yes
Contiguous: Yes
Permitted: Yes
Wet space: No
Addition: No
Conversion: No

2 Floor 1 - Cl



Dimensions: 5'10" x 11'9"
Area: 66 sq. ft
Counted as living area: Yes

Heated: Yes
Finished: Yes
Enclosed: Yes
Contiguous: Yes
Permitted: Yes
Wet space: No
Addition: No
Conversion: No

700 Island Way, Clearwater Beach, Pinellas County, Florida, United States, 33767, 106

3 Floor 1 - Utility



Dimensions: 5'8" x 8'11"
Area: 50 sq. ft
Counted as living area: Yes

Heated: Yes
Finished: Yes
Enclosed: Yes
Contiguous: Yes
Permitted: Yes
Wet space: No
Addition: No
Conversion: No

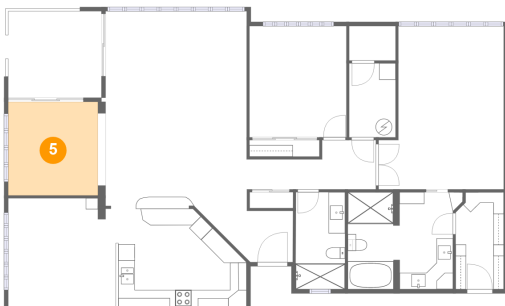
4 Floor 1 - Living Room



Dimensions: 17'2" x 24'2"
Area: 410 sq. ft
Counted as living area: Yes

Heated: Yes
Finished: Yes
Enclosed: Yes
Contiguous: Yes
Permitted: Yes
Wet space: No
Addition: No
Conversion: No

5 Floor 1 - Dining Room

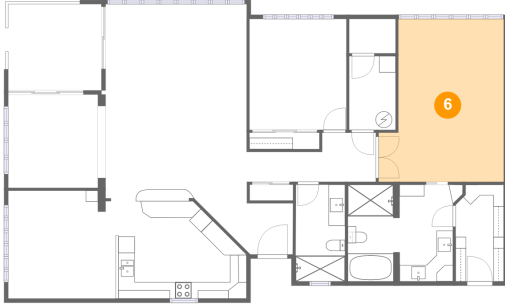


Dimensions: 10'11" x 11'4"
Area: 123 sq. ft
Counted as living area: Yes

Heated: Yes
Finished: Yes
Enclosed: Yes
Contiguous: Yes
Permitted: Yes
Wet space: No
Addition: No
Conversion: No

700 Island Way, Clearwater Beach, Pinellas County, Florida, United States, 33767, 106

6 Floor 1 - Bedroom



Dimensions: 15'2" x 19'9"
Area: 267 sq. ft
Counted as living area: Yes

Heated: Yes
Finished: Yes
Enclosed: Yes
Contiguous: Yes
Permitted: Yes
Wet space: No
Addition: No
Conversion: No

7 Floor 1 - Nook



Dimensions: 11'10" x 13'1"
Area: 152 sq. ft
Counted as living area: Yes

Heated: Yes
Finished: Yes
Enclosed: Yes
Contiguous: Yes
Permitted: Yes
Wet space: No
Addition: No
Conversion: No

8 Floor 1 - Outdoor



Dimensions: 11'3" x 10'5"
Area: 118 sq. ft
Counted as living area: No

Heated: No
Finished: Yes
Enclosed: No
Contiguous: Yes
Permitted: Yes
Wet space: No
Addition: No
Conversion: No

700 Island Way, Clearwater Beach, Pinellas County, Florida, United States, 33767, 106

9 Floor 1 - Bath



Dimensions: 13'11" x 11'9"
Area: 146 sq. ft
Counted as living area: Yes

Heated: Yes
Finished: Yes
Enclosed: Yes
Contiguous: Yes
Permitted: Yes
Wet space: Yes
Addition: No
Conversion: No

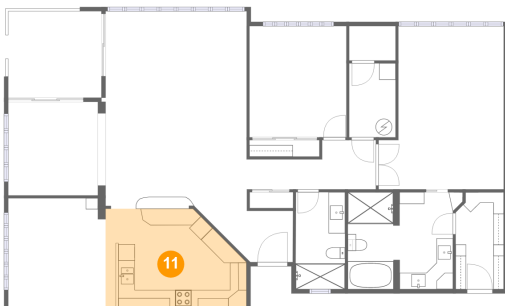
10 Floor 1 - Entry



Dimensions: 11'2" x 6'2"
Area: 51 sq. ft
Counted as living area: Yes

Heated: Yes
Finished: Yes
Enclosed: Yes
Contiguous: Yes
Permitted: Yes
Wet space: No
Addition: No
Conversion: No

11 Floor 1 - Kitchen

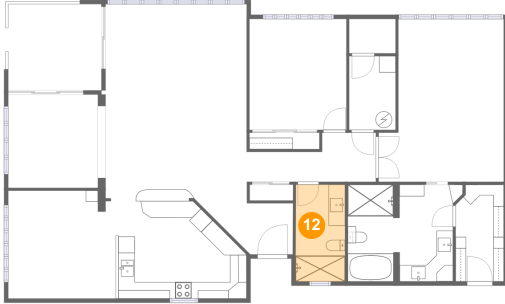


Dimensions: 17'1" x 11'10"
Area: 181 sq. ft
Counted as living area: Yes

Heated: Yes
Finished: Yes
Enclosed: Yes
Contiguous: Yes
Permitted: Yes
Wet space: No
Addition: No
Conversion: No

**700 Island Way, Clearwater Beach, Pinellas
County, Florida, United States, 33767, 106**

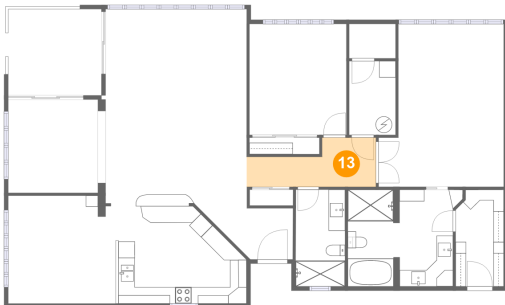
12 Floor 1 - Bath



Dimensions: 5'11" x 11'9"
Area: 70 sq. ft
Counted as living area: Yes

Heated: Yes
Finished: Yes
Enclosed: Yes
Contiguous: Yes
Permitted: Yes
Wet space: Yes
Addition: No
Conversion: No

13 Floor 1 - Hall



Dimensions: 15'8" x 5'11"
Area: 72 sq. ft
Counted as living area: Yes

Heated: Yes
Finished: Yes
Enclosed: Yes
Contiguous: Yes
Permitted: Yes
Wet space: No
Addition: No
Conversion: No