

Home report

5653 Carmon Drive, Windsor, Weld County, Colorado, United States, 80550

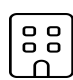


Total Area: 3025 sq. ft

Floor 1: 1259 sq. ft, Floor 2: 1766 sq. ft


Excluded: Covered deck 125 sq. ft, Porch 73 sq. ft, Garage 528 sq. ft, Fireplace 14 sq. ft, Walls: 214 sq. ft

Property summary

 **2** Floors

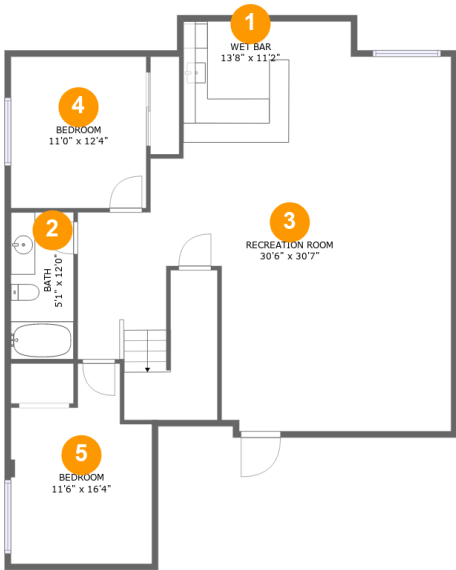
 **5** Bedrooms

 **3** Bathrooms

 **1** Garages

Home report

5653 Carmon Drive, Windsor, Weld County, Colorado, United States, 80550



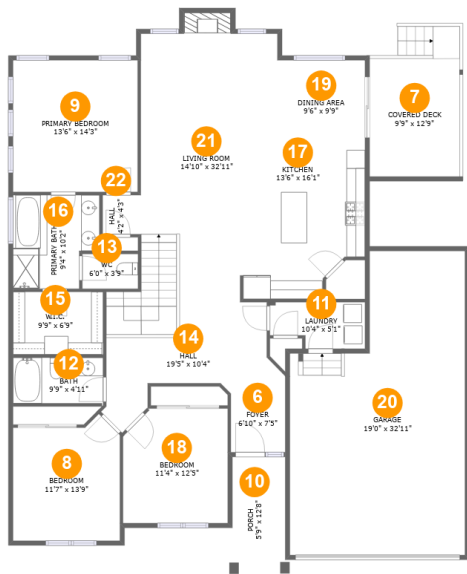
Room dimensions

Floor 1 Total:1259sqft   Excluded: 0sqft

#		Max Dimensions	sqft	Included
1	Wet Bar	13'8" x 11'2"	153 sq. ft	Yes
2	Bath	5'1" x 12'0"	62 sq. ft	Yes
3	Recreation Room	30'6" x 30'7"	682 sq. ft	Yes
4	Bedroom	11'0" x 12'4"	137 sq. ft	Yes
5	Bedroom	11'6" x 16'4"	156 sq. ft	Yes

Home report

5653 Carmon Drive, Windsor, Weld County, Colorado, United States, 80550



Room dimensions

Floor 2 Total:1766sqft   Excluded: 740sqft

#		Max Dimensions	sqft	Included
6	Foyer	6'10" x 7'5"	45 sq. ft	Yes
7	Covered Deck	9'9" x 12'9"	125 sq. ft	No
8	Bedroom	11'7" x 13'9"	144 sq. ft	Yes
9	Primary Bedroom	13'6" x 14'3"	193 sq. ft	Yes
10	Porch	5'9" x 12'8"	73 sq. ft	No
11	Laundry	10'4" x 5'1"	46 sq. ft	Yes
12	Bath	9'9" x 4'11"	48 sq. ft	Yes
13	WC	6'0" x 3'9"	23 sq. ft	Yes
14	Hall	19'5" x 10'4"	109 sq. ft	Yes
15	W.I.C.	9'9" x 6'9"	66 sq. ft	Yes
16	Primary Bath	9'4" x 10'2"	86 sq. ft	Yes

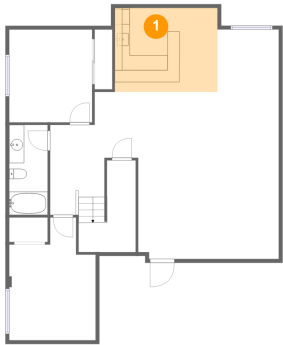
## Home report

**5653 Carmon Drive, Windsor, Weld County, Colorado, United States, 80550**

#		Max Dimensions	sqft	Included
17	Kitchen	13'6" x 16'1"	199 sq. ft	Yes
18	Bedroom	11'4" x 12'5"	136 sq. ft	Yes
19	Dining Area	9'6" x 9'9"	92 sq. ft	Yes
20	Garage	19'0" x 32'11"	528 sq. ft	No
21	Living Room	14'10" x 32'11"	446 sq. ft	Yes
22	Hall	4'2" x 4'3"	17 sq. ft	Yes

5653 Carmon Drive, Windsor, Weld County, Colorado, United States, 80550

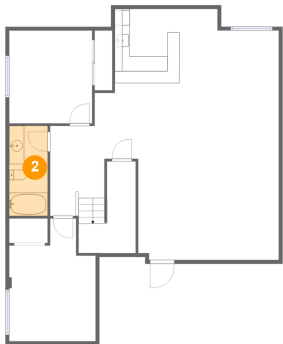
1 Floor 1 - Wet Bar



Max Dimensions: 13'8" x 11'2"  
Calculated Area: 153 sq. ft  
Included: Yes

Heated: Yes  
Finished: Yes  
Enclosed: Yes  
Contiguous: Yes  
Permitted: Yes  
Wet space: No  
Addition: No  
Conversion: No

2 Floor 1 - Bath

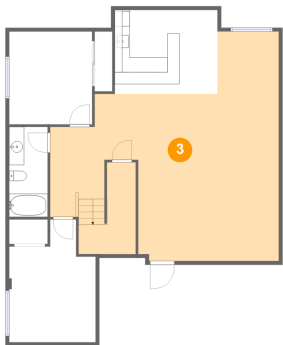


Max Dimensions: 5'1" x 12'0"  
Calculated Area: 62 sq. ft  
Included: Yes

Heated: Yes  
Finished: Yes  
Enclosed: Yes  
Contiguous: Yes  
Permitted: Yes  
Wet space: Yes  
Addition: No  
Conversion: No

5653 Carmon Drive, Windsor, Weld County, Colorado, United States, 80550

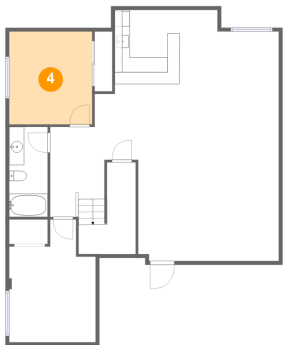
3 Floor 1 - Recreation Room



Max Dimensions: 30'6" x 30'7"  
Calculated Area: 682 sq. ft  
Included: Yes

Heated: Yes  
Finished: Yes  
Enclosed: Yes  
Contiguous: Yes  
Permitted: Yes  
Wet space: No  
Addition: No  
Conversion: No

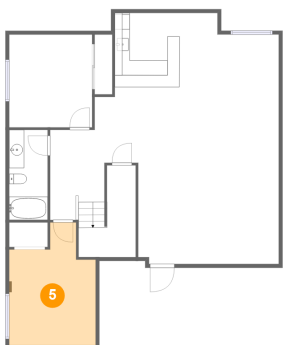
4 Floor 1 - Bedroom



Max Dimensions: 11'0" x 12'4"  
Calculated Area: 137 sq. ft  
Included: Yes

Heated: Yes  
Finished: Yes  
Enclosed: Yes  
Contiguous: Yes  
Permitted: Yes  
Wet space: No  
Addition: No  
Conversion: No

5 Floor 1 - Bedroom



Max Dimensions: 11'6" x 16'4"  
Calculated Area: 156 sq. ft  
Included: Yes

Heated: Yes  
Finished: Yes  
Enclosed: Yes  
Contiguous: Yes  
Permitted: Yes  
Wet space: No  
Addition: No  
Conversion: No

5653 Carmon Drive, Windsor, Weld County, Colorado, United States, 80550

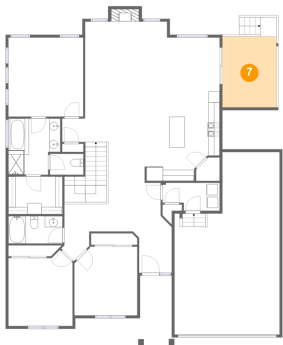
6 Floor 2 - Foyer



Max Dimensions: 6'10" x 7'5"  
Calculated Area: 45 sq. ft  
Included: Yes

Heated: Yes  
Finished: Yes  
Enclosed: Yes  
Contiguous: Yes  
Permitted: Yes  
Wet space: No  
Addition: No  
Conversion: No

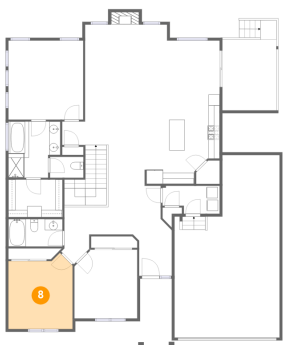
7 Floor 2 - Covered Deck



Max Dimensions: 9'9" x 12'9"  
Calculated Area: 125 sq. ft  
Included: No

Heated: No  
Finished: Yes  
Enclosed: No  
Contiguous: Yes  
Permitted: Yes  
Wet space: No  
Addition: No  
Conversion: No

8 Floor 2 - Bedroom



Max Dimensions: 11'7" x 13'9"  
Calculated Area: 144 sq. ft  
Included: Yes

Heated: Yes  
Finished: Yes  
Enclosed: Yes  
Contiguous: Yes  
Permitted: Yes  
Wet space: No  
Addition: No  
Conversion: No

5653 Carmon Drive, Windsor, Weld County, Colorado, United States, 80550

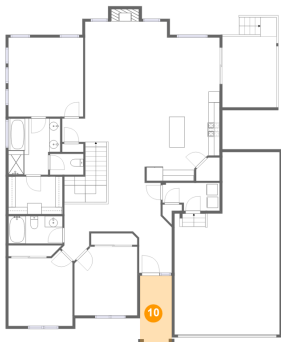
## 9 Floor 2 - Primary Bedroom



Max Dimensions: 13'6" x 14'3"  
Calculated Area: 193 sq. ft  
Included: Yes

Heated: Yes  
Finished: Yes  
Enclosed: Yes  
Contiguous: Yes  
Permitted: Yes  
Wet space: No  
Addition: No  
Conversion: No

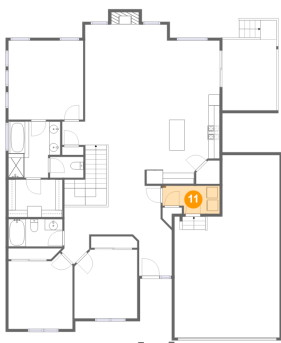
## 10 Floor 2 - Porch



Max Dimensions: 5'9" x 12'8"  
Calculated Area: 73 sq. ft  
Included: No

Heated: No  
Finished: Yes  
Enclosed: No  
Contiguous: Yes  
Permitted: Yes  
Wet space: No  
Addition: No  
Conversion: No

## 11 Floor 2 - Laundry



Max Dimensions: 10'4" x 5'1"  
Calculated Area: 46 sq. ft  
Included: Yes

Heated: Yes  
Finished: Yes  
Enclosed: Yes  
Contiguous: Yes  
Permitted: Yes  
Wet space: No  
Addition: No  
Conversion: No



5653 Carmon Drive, Windsor, Weld County, Colorado, United States, 80550

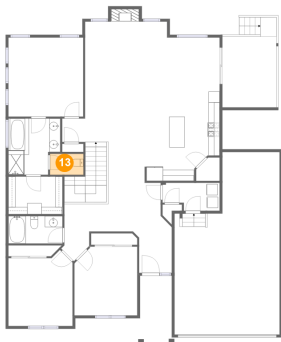
## 12 Floor 2 - Bath



Max Dimensions: 9'9" x 4'11"  
Calculated Area: 48 sq. ft  
Included: Yes

Heated: Yes  
Finished: Yes  
Enclosed: Yes  
Contiguous: Yes  
Permitted: Yes  
Wet space: Yes  
Addition: No  
Conversion: No

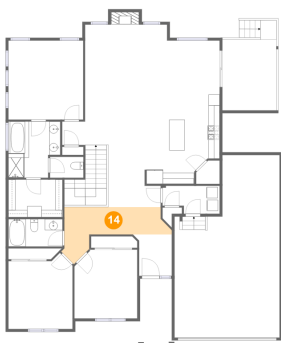
## 13 Floor 2 - WC



Max Dimensions: 6'0" x 3'9"  
Calculated Area: 23 sq. ft  
Included: Yes

Heated: Yes  
Finished: Yes  
Enclosed: Yes  
Contiguous: Yes  
Permitted: Yes  
Wet space: Yes  
Addition: No  
Conversion: No

## 14 Floor 2 - Hall



Max Dimensions: 19'5" x 10'4"  
Calculated Area: 109 sq. ft  
Included: Yes

Heated: Yes  
Finished: Yes  
Enclosed: Yes  
Contiguous: Yes  
Permitted: Yes  
Wet space: No  
Addition: No  
Conversion: No

5653 Carmon Drive, Windsor, Weld County, Colorado, United States, 80550

15 Floor 2 - W.I.C.



Max Dimensions: 9'9" x 6'9"  
Calculated Area: 66 sq. ft  
Included: Yes

Heated: Yes  
Finished: Yes  
Enclosed: Yes  
Contiguous: Yes  
Permitted: Yes  
Wet space: No  
Addition: No  
Conversion: No

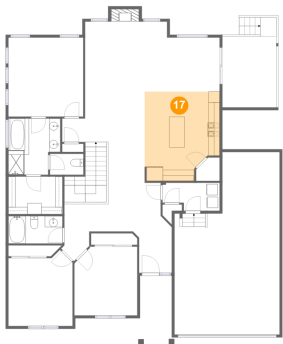
16 Floor 2 - Primary Bath



Max Dimensions: 9'4" x 10'2"  
Calculated Area: 86 sq. ft  
Included: Yes

Heated: Yes  
Finished: Yes  
Enclosed: Yes  
Contiguous: Yes  
Permitted: Yes  
Wet space: Yes  
Addition: No  
Conversion: No

17 Floor 2 - Kitchen

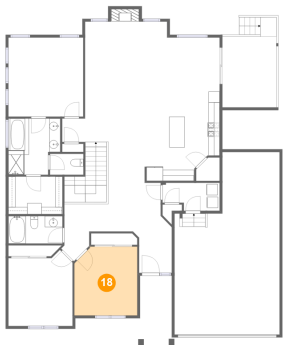


Max Dimensions: 13'6" x 16'1"  
Calculated Area: 199 sq. ft  
Included: Yes

Heated: Yes  
Finished: Yes  
Enclosed: Yes  
Contiguous: Yes  
Permitted: Yes  
Wet space: No  
Addition: No  
Conversion: No

5653 Carmon Drive, Windsor, Weld County, Colorado, United States, 80550

18 Floor 2 - Bedroom



Max Dimensions: 11'4" x 12'5"  
Calculated Area: 136 sq. ft  
Included: Yes

Heated: Yes  
Finished: Yes  
Enclosed: Yes  
Contiguous: Yes  
Permitted: Yes  
Wet space: No  
Addition: No  
Conversion: No

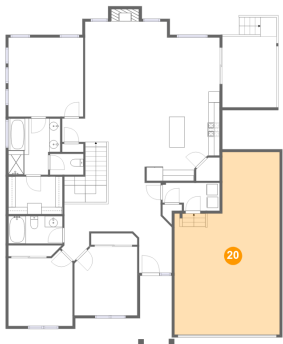
19 Floor 2 - Dining Area



Max Dimensions: 9'6" x 9'9"  
Calculated Area: 92 sq. ft  
Included: Yes

Heated: Yes  
Finished: Yes  
Enclosed: Yes  
Contiguous: Yes  
Permitted: Yes  
Wet space: No  
Addition: No  
Conversion: No

20 Floor 2 - Garage

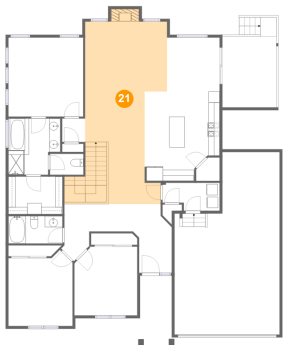


Max Dimensions: 19'0" x 32'11"  
Calculated Area: 528 sq. ft  
Included: No

Heated: No  
Finished: No  
Enclosed: Yes  
Contiguous: Yes  
Permitted: Yes  
Wet space: No  
Addition: No  
Conversion: No

5653 Carmon Drive, Windsor, Weld County, Colorado, United States, 80550

21 Floor 2 - Living Room



Max Dimensions: 14'10" x 32'11"  
Calculated Area: 446 sq. ft  
Included: Yes

Heated: Yes  
Finished: Yes  
Enclosed: Yes  
Contiguous: Yes  
Permitted: Yes  
Wet space: No  
Addition: No  
Conversion: No

22 Floor 2 - Hall



Max Dimensions: 4'2" x 4'3"  
Calculated Area: 17 sq. ft  
Included: Yes

Heated: Yes  
Finished: Yes  
Enclosed: Yes  
Contiguous: Yes  
Permitted: Yes  
Wet space: No  
Addition: No  
Conversion: No