

Home report

1110 Gravel Hill Road, Vinton, Bedford County, Virginia, United States, 24179



Total Area: 3389 sq. ft

Floor 1: 398 sq. ft, Floor 2: 1586 sq. ft, Floor 3: 1405 sq. ft

Excluded: Storage 1015 sq. ft, Laundry 82 sq. ft, Utility 81 sq. ft, Walls: 244 sq. ft

Property summary

**3** Floors

**1** Bathrooms

**4** Half baths

Home report

1110 Gravel Hill Road, Vinton, Bedford County, Virginia, United States, 24179



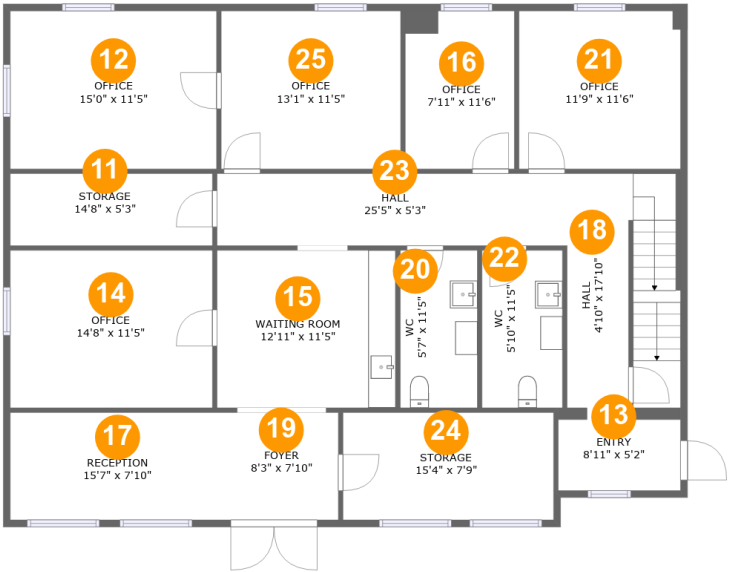
Room dimensions

Floor 1 Total:398sqft Excluded: 981sqft

#		Max Dimensions	sqft	Included
1	Storage	11'3" x 11'6"	129 sq. ft	No
2	W.I.C.	6'3" x 8'3"	52 sq. ft	Yes
3	Storage	9'5" x 11'6"	109 sq. ft	No
4	Storage	10'0" x 11'6"	115 sq. ft	No
5	Storage	35'2" x 11'7"	351 sq. ft	No
6	Hall	42'10" x 5'1"	240 sq. ft	Yes
7	Storage	8'7" x 11'6"	99 sq. ft	No
8	Bath	5'1" x 11'7"	59 sq. ft	Yes
9	Utility	7'3" x 11'7"	81 sq. ft	No
10	Laundry	7'1" x 11'6"	82 sq. ft	No

Home report

1110 Gravel Hill Road, Vinton, Bedford County, Virginia, United States, 24179



Room dimensions

Floor 2 Total:1586sqft Excluded: 197sqft

#		Max Dimensions	sqft	Included
11	Storage	14'8" x 5'3"	77 sq. ft	No
12	Office	15'0" x 11'5"	172 sq. ft	Yes
13	Entry	8'11" x 5'2"	46 sq. ft	Yes
14	Office	14'8" x 11'5"	168 sq. ft	Yes
15	Waiting Room	12'11" x 11'5"	149 sq. ft	Yes
16	Office	7'11" x 11'6"	91 sq. ft	Yes
17	Reception	15'7" x 7'10"	122 sq. ft	Yes
18	Hall	4'10" x 17'10"	138 sq. ft	Yes
19	Foyer	8'3" x 7'10"	64 sq. ft	Yes
20	WC	5'7" x 11'5"	64 sq. ft	Yes
21	Office	11'9" x 11'6"	135 sq. ft	Yes

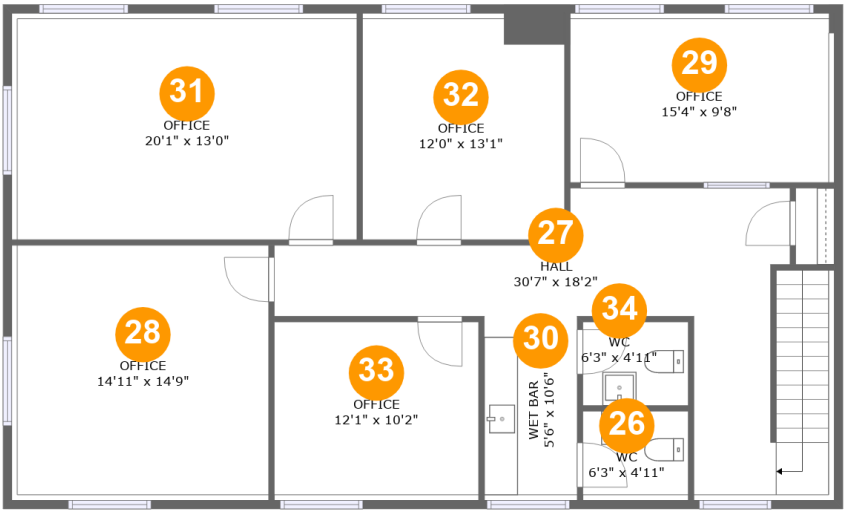
Home report

1110 Gravel Hill Road, Vinton, Bedford County, Virginia, United States, 24179

#		Max Dimensions	sqft	Included
22	WC	5'10" x 11'5"	67 sq. ft	Yes
23	Hall	25'5" x 5'3"	133 sq. ft	Yes
24	Storage	15'4" x 7'9"	120 sq. ft	No
25	Office	13'1" x 11'5"	150 sq. ft	Yes

Home report

1110 Gravel Hill Road, Vinton, Bedford County, Virginia, United States, 24179



Room dimensions

Floor 3 Total:1405sqft Excluded: 0sqft

#		Max Dimensions	sqft	Included
26	WC	6'3" x 4'11"	33 sq. ft	Yes
27	Hall	30'7" x 18'2"	266 sq. ft	Yes
28	Office	14'11" x 14'9"	230 sq. ft	Yes
29	Office	15'4" x 9'8"	157 sq. ft	Yes
30	Wet Bar	5'6" x 10'6"	60 sq. ft	Yes
31	Office	20'1" x 13'0"	274 sq. ft	Yes
32	Office	12'0" x 13'1"	160 sq. ft	Yes
33	Office	12'1" x 10'2"	128 sq. ft	Yes
34	WC	6'3" x 4'11"	31 sq. ft	Yes

1110 Gravel Hill Road, Vinton, Bedford County, Virginia, United States, 24179

1 Floor 1 - Storage



Max Dimensions: 11'3" x 11'6"
Calculated Area: 129 sq. ft
Included: No

Heated: No
Finished: No
Enclosed: No
Contiguous: No
Permitted: Yes
Wet space: No
Addition: No
Conversion: No

2 Floor 1 - W.I.C.



Max Dimensions: 6'3" x 8'3"
Calculated Area: 52 sq. ft
Included: Yes

Heated: Yes
Finished: Yes
Enclosed: Yes
Contiguous: Yes
Permitted: Yes
Wet space: No
Addition: No
Conversion: No

3 Floor 1 - Storage



Max Dimensions: 9'5" x 11'6"
Calculated Area: 109 sq. ft
Included: No

Heated: No
Finished: No
Enclosed: No
Contiguous: No
Permitted: Yes
Wet space: No
Addition: No
Conversion: No

4 Floor 1 - Storage



Max Dimensions: 10'0" x 11'6"
Calculated Area: 115 sq. ft
Included: No

Heated: No
Finished: No
Enclosed: No
Contiguous: No
Permitted: Yes
Wet space: No
Addition: No
Conversion: No

5 Floor 1 - Storage



Max Dimensions: 35'2" x 11'7"
Calculated Area: 351 sq. ft
Included: No

Heated: No
Finished: No
Enclosed: No
Contiguous: No
Permitted: Yes
Wet space: No
Addition: No
Conversion: No

1110 Gravel Hill Road, Vinton, Bedford County, Virginia, United States, 24179

6 Floor 1 - Hall



Max Dimensions: 42'10" x 5'1"
Calculated Area: 240 sq. ft
Included: Yes

Heated: Yes
Finished: Yes
Enclosed: Yes
Contiguous: Yes
Permitted: Yes
Wet space: No
Addition: No
Conversion: No

7 Floor 1 - Storage



Max Dimensions: 8'7" x 11'6"
Calculated Area: 99 sq. ft
Included: No

Heated: No
Finished: No
Enclosed: No
Contiguous: No
Permitted: Yes
Wet space: No
Addition: No
Conversion: No

8 Floor 1 - Bath



Max Dimensions: 5'1" x 11'7"
Calculated Area: 59 sq. ft
Included: Yes

Heated: Yes
Finished: Yes
Enclosed: Yes
Contiguous: Yes
Permitted: Yes
Wet space: Yes
Addition: No
Conversion: No

1110 Gravel Hill Road, Vinton, Bedford County, Virginia, United States, 24179

9 Floor 1 - Utility



Max Dimensions: 7'3" x 11'7"
Calculated Area: 81 sq. ft
Included: No

Heated: Yes
Finished: No
Enclosed: Yes
Contiguous: Yes
Permitted: Yes
Wet space: No
Addition: No
Conversion: No

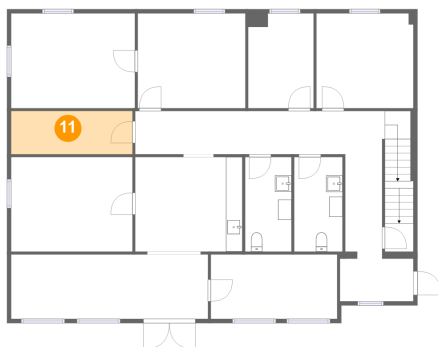
10 Floor 1 - Laundry



Max Dimensions: 7'1" x 11'6"
Calculated Area: 82 sq. ft
Included: No

Heated: Yes
Finished: No
Enclosed: Yes
Contiguous: Yes
Permitted: Yes
Wet space: No
Addition: No
Conversion: No

11 Floor 2 - Storage



Max Dimensions: 14'8" x 5'3"
Calculated Area: 77 sq. ft
Included: No

Heated: No
Finished: Yes
Enclosed: No
Contiguous: Yes
Permitted: Yes
Wet space: No
Addition: No
Conversion: No

1110 Gravel Hill Road, Vinton, Bedford County, Virginia, United States, 24179

12 Floor 2 - Office



Max Dimensions: 15'0" x 11'5"
Calculated Area: 172 sq. ft
Included: Yes

Heated: Yes
Finished: Yes
Enclosed: Yes
Contiguous: Yes
Permitted: Yes
Wet space: No
Addition: No
Conversion: No

13 Floor 2 - Entry



Max Dimensions: 8'11" x 5'2"
Calculated Area: 46 sq. ft
Included: Yes

Heated: Yes
Finished: Yes
Enclosed: Yes
Contiguous: Yes
Permitted: Yes
Wet space: No
Addition: No
Conversion: No

14 Floor 2 - Office



Max Dimensions: 14'8" x 11'5"
Calculated Area: 168 sq. ft
Included: Yes

Heated: Yes
Finished: Yes
Enclosed: Yes
Contiguous: Yes
Permitted: Yes
Wet space: No
Addition: No
Conversion: No

1110 Gravel Hill Road, Vinton, Bedford County, Virginia, United States, 24179

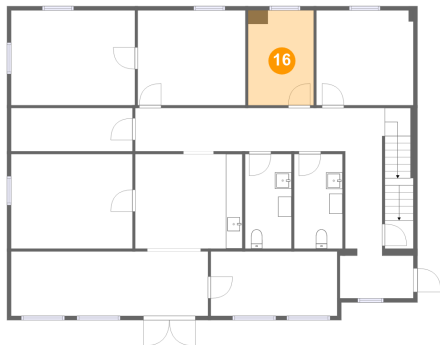
15 Floor 2 - Waiting Room



Max Dimensions: 12'11" x 11'5"
Calculated Area: 149 sq. ft
Included: Yes

Heated: Yes
Finished: Yes
Enclosed: Yes
Contiguous: Yes
Permitted: Yes
Wet space: No
Addition: No
Conversion: No

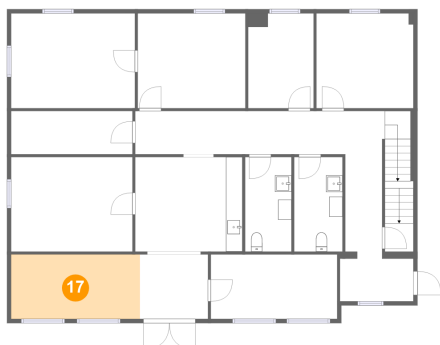
16 Floor 2 - Office



Max Dimensions: 7'11" x 11'6"
Calculated Area: 91 sq. ft
Included: Yes

Heated: Yes
Finished: Yes
Enclosed: Yes
Contiguous: Yes
Permitted: Yes
Wet space: No
Addition: No
Conversion: No

17 Floor 2 - Reception



Max Dimensions: 15'7" x 7'10"
Calculated Area: 122 sq. ft
Included: Yes

Heated: Yes
Finished: Yes
Enclosed: Yes
Contiguous: Yes
Permitted: Yes
Wet space: No
Addition: No
Conversion: No

1110 Gravel Hill Road, Vinton, Bedford County, Virginia, United States, 24179

18 Floor 2 - Hall



Max Dimensions: 4'10" x 17'10"
Calculated Area: 138 sq. ft
Included: Yes

Heated: Yes
Finished: Yes
Enclosed: Yes
Contiguous: Yes
Permitted: Yes
Wet space: No
Addition: No
Conversion: No

19 Floor 2 - Foyer



Max Dimensions: 8'3" x 7'10"
Calculated Area: 64 sq. ft
Included: Yes

Heated: Yes
Finished: Yes
Enclosed: Yes
Contiguous: Yes
Permitted: Yes
Wet space: No
Addition: No
Conversion: No

20 Floor 2 - WC



Max Dimensions: 5'7" x 11'5"
Calculated Area: 64 sq. ft
Included: Yes

Heated: Yes
Finished: Yes
Enclosed: Yes
Contiguous: Yes
Permitted: Yes
Wet space: Yes
Addition: No
Conversion: No

1110 Gravel Hill Road, Vinton, Bedford County, Virginia, United States, 24179

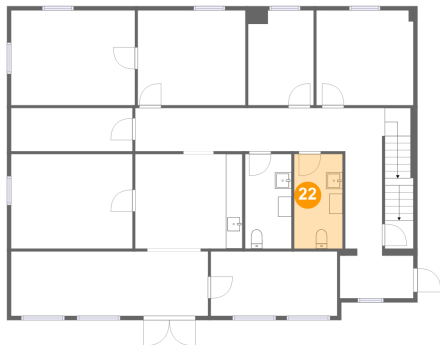
21 Floor 2 - Office



Max Dimensions: 11'9" x 11'6"
Calculated Area: 135 sq. ft
Included: Yes

Heated: Yes
Finished: Yes
Enclosed: Yes
Contiguous: Yes
Permitted: Yes
Wet space: No
Addition: No
Conversion: No

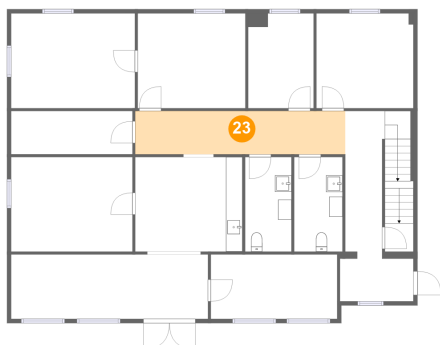
22 Floor 2 - WC



Max Dimensions: 5'10" x 11'5"
Calculated Area: 67 sq. ft
Included: Yes

Heated: Yes
Finished: Yes
Enclosed: Yes
Contiguous: Yes
Permitted: Yes
Wet space: Yes
Addition: No
Conversion: No

23 Floor 2 - Hall



Max Dimensions: 25'5" x 5'3"
Calculated Area: 133 sq. ft
Included: Yes

Heated: Yes
Finished: Yes
Enclosed: Yes
Contiguous: Yes
Permitted: Yes
Wet space: No
Addition: No
Conversion: No

1110 Gravel Hill Road, Vinton, Bedford County, Virginia, United States, 24179

24 Floor 2 - Storage



Max Dimensions: 15'4" x 7'9"
Calculated Area: 120 sq. ft
Included: No

Heated: No
Finished: Yes
Enclosed: No
Contiguous: Yes
Permitted: Yes
Wet space: No
Addition: No
Conversion: No

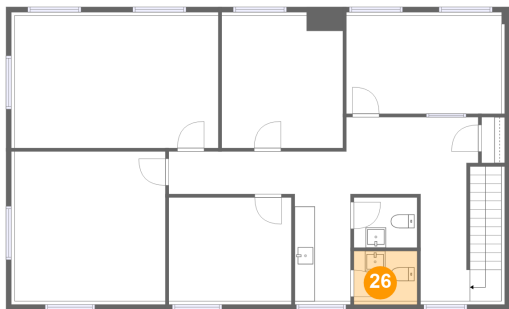
25 Floor 2 - Office



Max Dimensions: 13'1" x 11'5"
Calculated Area: 150 sq. ft
Included: Yes

Heated: Yes
Finished: Yes
Enclosed: Yes
Contiguous: Yes
Permitted: Yes
Wet space: No
Addition: No
Conversion: No

26 Floor 3 - WC

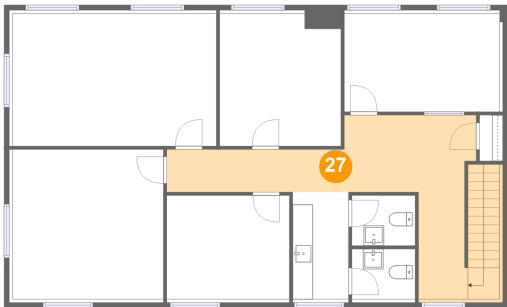


Max Dimensions: 6'3" x 4'11"
Calculated Area: 33 sq. ft
Included: Yes

Heated: Yes
Finished: Yes
Enclosed: Yes
Contiguous: Yes
Permitted: Yes
Wet space: Yes
Addition: No
Conversion: No

1110 Gravel Hill Road, Vinton, Bedford County, Virginia, United States, 24179

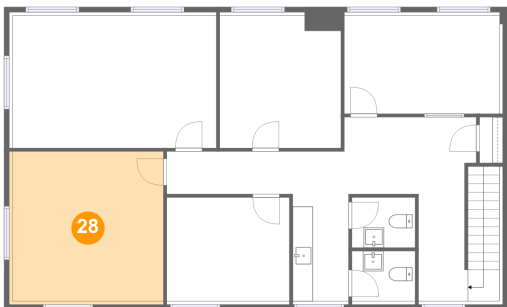
27 Floor 3 - Hall



Max Dimensions: 30'7" x 18'2"
Calculated Area: 266 sq. ft
Included: Yes

Heated: Yes
Finished: Yes
Enclosed: Yes
Contiguous: Yes
Permitted: Yes
Wet space: No
Addition: No
Conversion: No

28 Floor 3 - Office



Max Dimensions: 14'11" x 14'9"
Calculated Area: 230 sq. ft
Included: Yes

Heated: Yes
Finished: Yes
Enclosed: Yes
Contiguous: Yes
Permitted: Yes
Wet space: No
Addition: No
Conversion: No

29 Floor 3 - Office

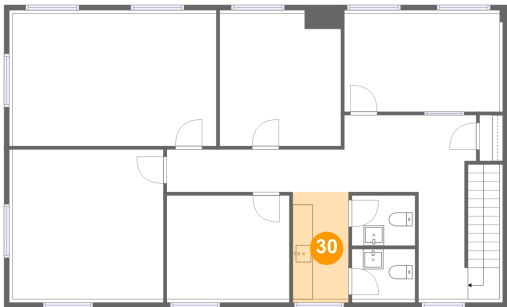


Max Dimensions: 15'4" x 9'8"
Calculated Area: 157 sq. ft
Included: Yes

Heated: Yes
Finished: Yes
Enclosed: Yes
Contiguous: Yes
Permitted: Yes
Wet space: No
Addition: No
Conversion: No

1110 Gravel Hill Road, Vinton, Bedford County, Virginia, United States, 24179

30 Floor 3 - Wet Bar



Max Dimensions: 5'6" x 10'6"
Calculated Area: 60 sq. ft
Included: Yes

Heated: Yes
Finished: Yes
Enclosed: Yes
Contiguous: Yes
Permitted: Yes
Wet space: No
Addition: No
Conversion: No

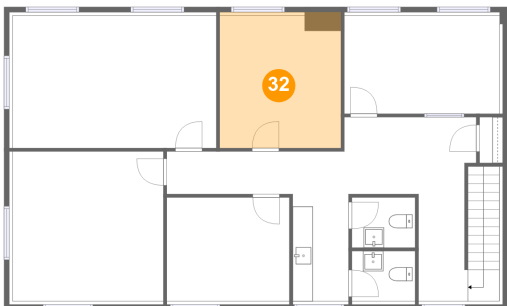
31 Floor 3 - Office



Max Dimensions: 20'1" x 13'0"
Calculated Area: 274 sq. ft
Included: Yes

Heated: Yes
Finished: Yes
Enclosed: Yes
Contiguous: Yes
Permitted: Yes
Wet space: No
Addition: No
Conversion: No

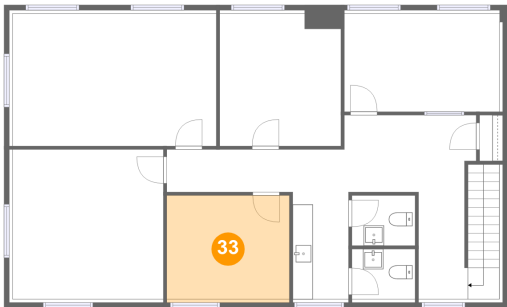
32 Floor 3 - Office



Max Dimensions: 12'0" x 13'1"
Calculated Area: 160 sq. ft
Included: Yes

Heated: Yes
Finished: Yes
Enclosed: Yes
Contiguous: Yes
Permitted: Yes
Wet space: No
Addition: No
Conversion: No

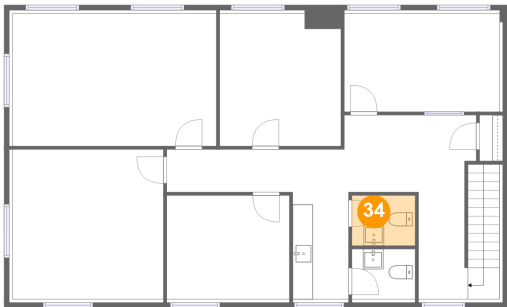
33 Floor 3 - Office



Max Dimensions: 12'1" x 10'2"
Calculated Area: 128 sq. ft
Included: Yes

Heated: Yes
Finished: Yes
Enclosed: Yes
Contiguous: Yes
Permitted: Yes
Wet space: No
Addition: No
Conversion: No

34 Floor 3 - WC



Max Dimensions: 6'3" x 4'11"
Calculated Area: 31 sq. ft
Included: Yes

Heated: Yes
Finished: Yes
Enclosed: Yes
Contiguous: Yes
Permitted: Yes
Wet space: Yes
Addition: No
Conversion: No