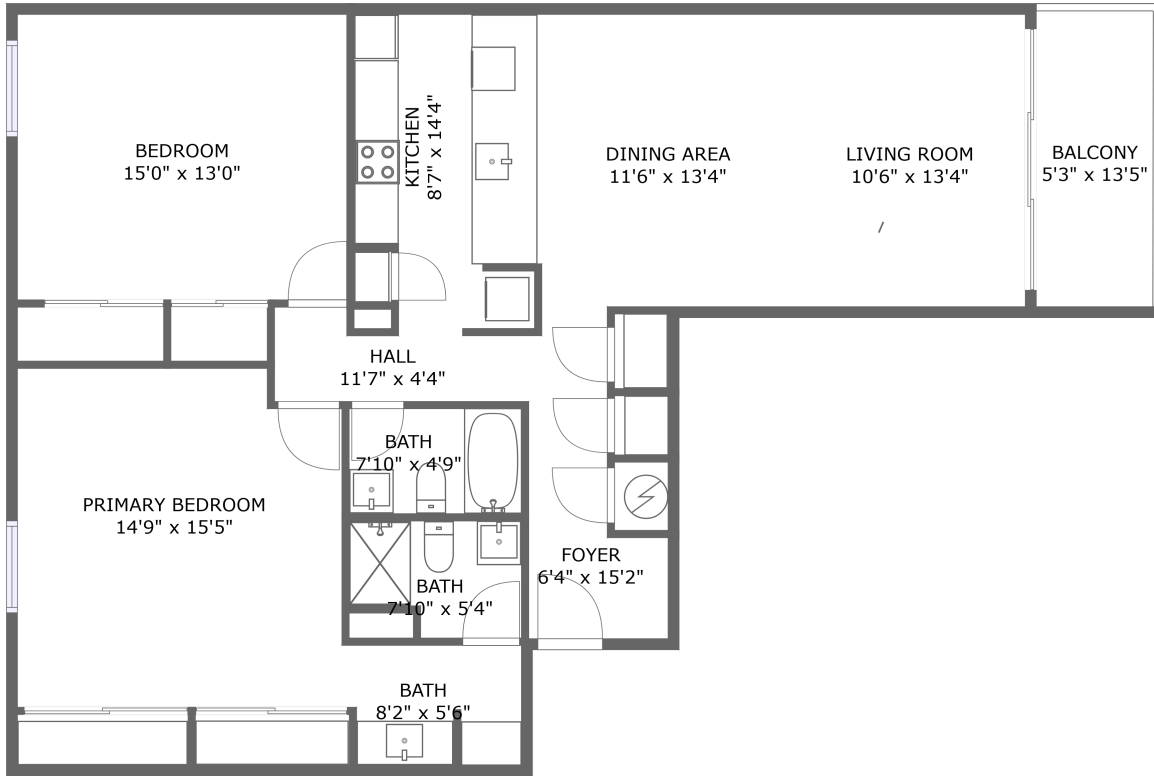


# 450 South Gulfview Boulevard, Clearwater Beach, Pinellas County, Florida, United States,



FLOOR 1

## Property Summary



1 floors



2 bedrooms



2 bathrooms



1,347 total sqft

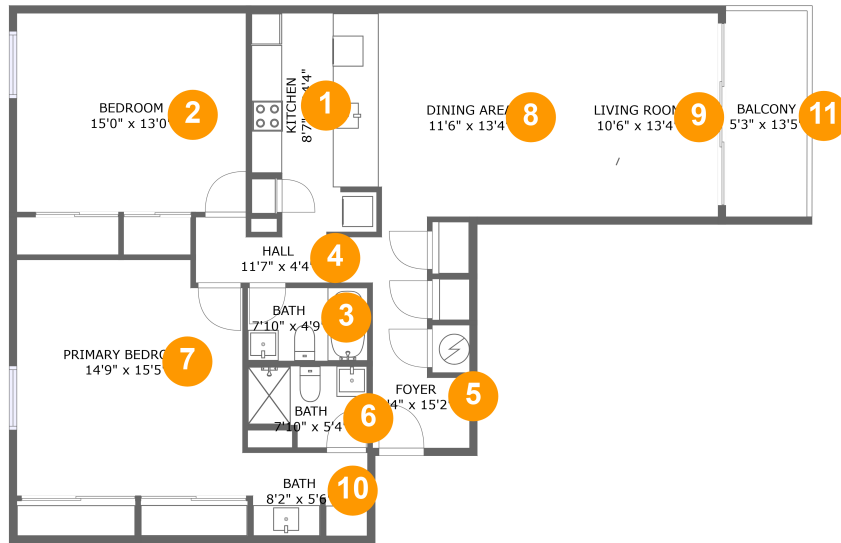


0 garages



1,275 Gross Living Area sqft

# 450 South Gulfview Boulevard, Clearwater Beach, Pinellas County, Florida, United States,



## Room Dimensions

Floor 1

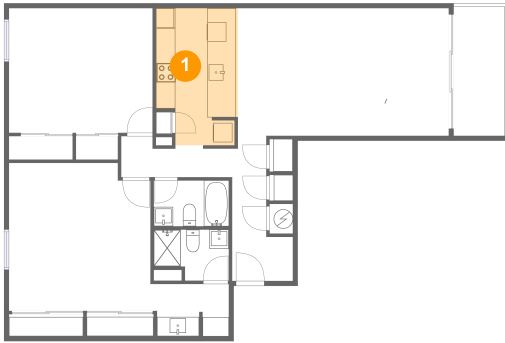
Total sqft: 1347

Living area: 1275

#	Room name	Dimensions	Area (sqft)	Counted as Living Area
1	Kitchen	8'7" x 14'4"	113 sq. ft	Yes
2	Bedroom	15'0" x 13'0"	195 sq. ft	Yes
3	Bath	7'10" x 4'9"	38 sq. ft	Yes
4	Hall	11'7" x 4'4"	40 sq. ft	Yes
5	Foyer	6'4" x 15'2"	66 sq. ft	Yes
6	Bath	7'10" x 5'4"	37 sq. ft	Yes
7	Primary Bedroom	14'9" x 15'5"	222 sq. ft	Yes
8	Dining Area	11'6" x 13'4"	153 sq. ft	Yes
9	Living Room	10'6" x 13'4"	140 sq. ft	Yes
10	Bath	8'2" x 5'6"	42 sq. ft	Yes
11	Balcony	5'3" x 13'5"	72 sq. ft	No

# 450 South Gulfview Boulevard, Clearwater Beach, Pinellas County, Florida, United States,

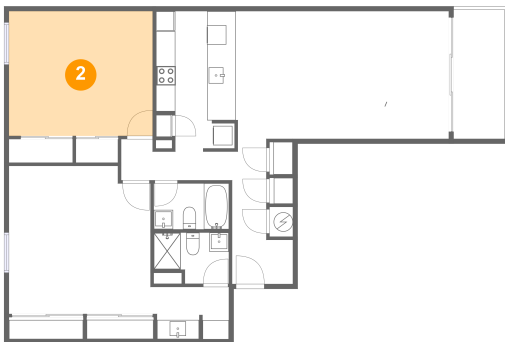
## 1 Floor 1 - Kitchen



Dimensions: 8'7" x 14'4"  
Area: 113 sq. ft  
Counted as Living Area:  
Yes

Heated: Yes  
Finished: Yes  
Enclosed: Yes  
Contiguous:  
Yes  
Permitted: Yes  
Wet Space: No  
Addition: No  
Conversion: No

## 2 Floor 1 - Bedroom

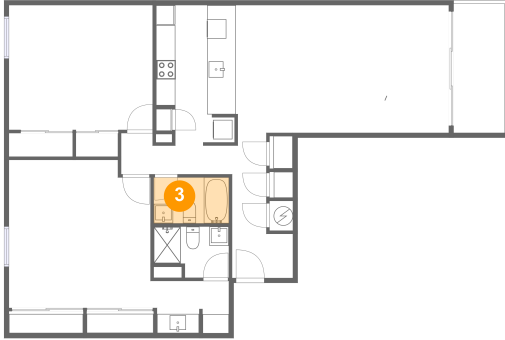


Dimensions: 15'0" x 13'0"  
Area: 195 sq. ft  
Counted as Living Area:  
Yes

Heated: Yes  
Finished: Yes  
Enclosed: Yes  
Contiguous:  
Yes  
Permitted: Yes  
Wet Space: No  
Addition: No  
Conversion: No

# 450 South Gulfview Boulevard, Clearwater Beach, Pinellas County, Florida, United States,

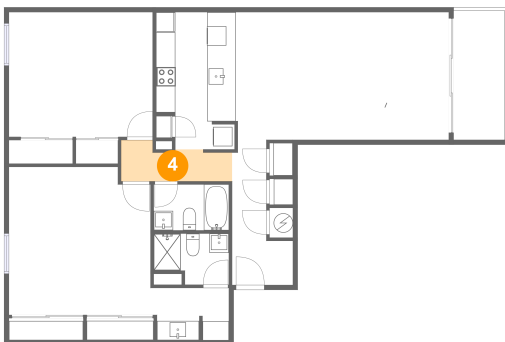
## 3 Floor 1 - Bath



Dimensions: 7'10" x 4'9"  
Area: 38 sq. ft  
Counted as Living Area:  
Yes

Heated: Yes  
Finished: Yes  
Enclosed: Yes  
Contiguous:  
Yes  
Permitted: Yes  
Wet Space: Yes  
Addition: No  
Conversion: No

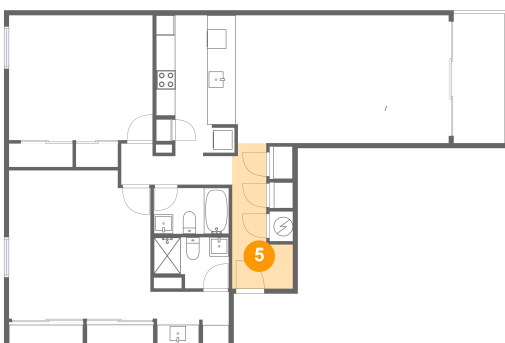
## 4 Floor 1 - Hall



Dimensions: 11'7" x 4'4"  
Area: 40 sq. ft  
Counted as Living Area:  
Yes

Heated: Yes  
Finished: Yes  
Enclosed: Yes  
Contiguous:  
Yes  
Permitted: Yes  
Wet Space: No  
Addition: No  
Conversion: No

## 5 Floor 1 - Foyer

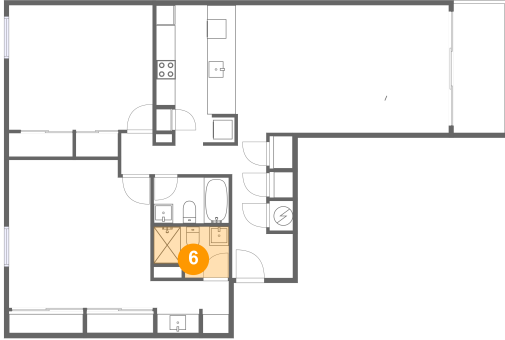


Dimensions: 6'4" x 15'2"  
Area: 66 sq. ft  
Counted as Living Area:  
Yes

Heated: Yes  
Finished: Yes  
Enclosed: Yes  
Contiguous:  
Yes  
Permitted: Yes  
Wet Space: No  
Addition: No  
Conversion: No

# 450 South Gulfview Boulevard, Clearwater Beach, Pinellas County, Florida, United States,

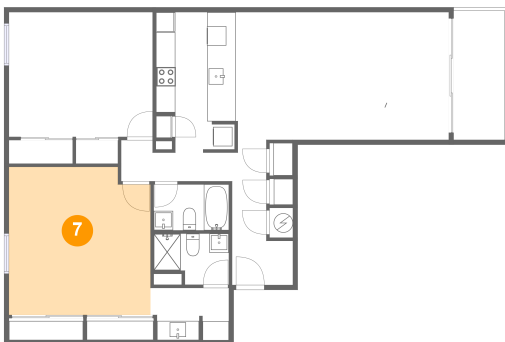
## 6 Floor 1 - Bath



Dimensions: 7'10" x 5'4"  
Area: 37 sq. ft  
Counted as Living Area:  
Yes

Heated: Yes  
Finished: Yes  
Enclosed: Yes  
Contiguous:  
Yes  
Permitted: Yes  
Wet Space: Yes  
Addition: No  
Conversion: No

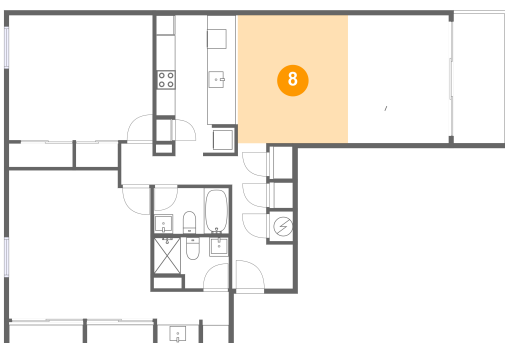
## 7 Floor 1 - Primary Bedroom



Dimensions: 14'9" x 15'5"  
Area: 222 sq. ft  
Counted as Living Area:  
Yes

Heated: Yes  
Finished: Yes  
Enclosed: Yes  
Contiguous:  
Yes  
Permitted: Yes  
Wet Space: No  
Addition: No  
Conversion: No

## 8 Floor 1 - Dining Area

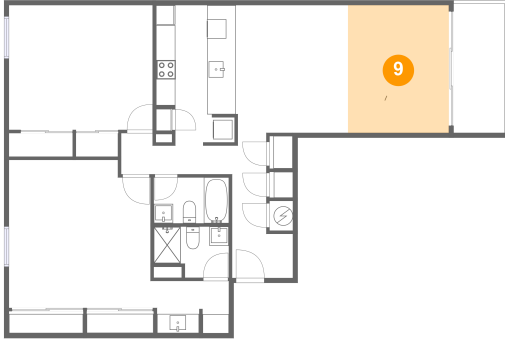


Dimensions: 11'6" x 13'4"  
Area: 153 sq. ft  
Counted as Living Area:  
Yes

Heated: Yes  
Finished: Yes  
Enclosed: Yes  
Contiguous:  
Yes  
Permitted: Yes  
Wet Space: No  
Addition: No  
Conversion: No

# 450 South Gulfview Boulevard, Clearwater Beach, Pinellas County, Florida, United States,

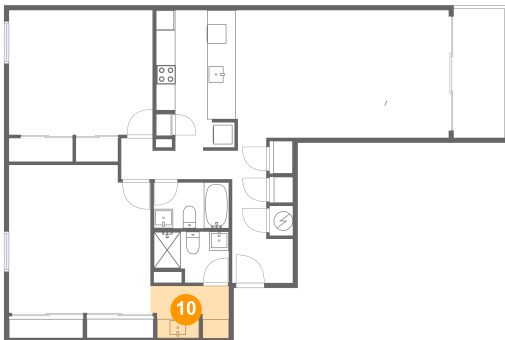
## 9 Floor 1 - Living Room



Dimensions: 10'6" x 13'4"  
Area: 140 sq. ft  
Counted as Living Area:  
Yes

Heated: Yes  
Finished: Yes  
Enclosed: Yes  
Contiguous:  
Yes  
Permitted: Yes  
Wet Space: No  
Addition: No  
Conversion: No

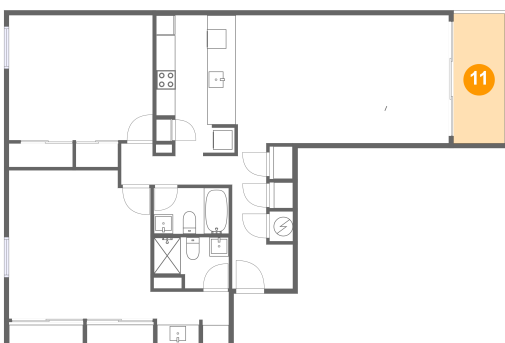
## 10 Floor 1 - Bath



Dimensions: 8'2" x 5'6"  
Area: 42 sq. ft  
Counted as Living Area:  
Yes

Heated: Yes  
Finished: Yes  
Enclosed: Yes  
Contiguous:  
Yes  
Permitted: Yes  
Wet Space: Yes  
Addition: No  
Conversion: No

## 11 Floor 1 - Balcony



Dimensions: 5'3" x 13'5"  
Area: 72 sq. ft  
Counted as Living Area: No

Heated: No  
Finished: Yes  
Enclosed: No  
Contiguous: Yes  
Permitted: Yes  
Wet Space: No  
Addition: No  
Conversion: No