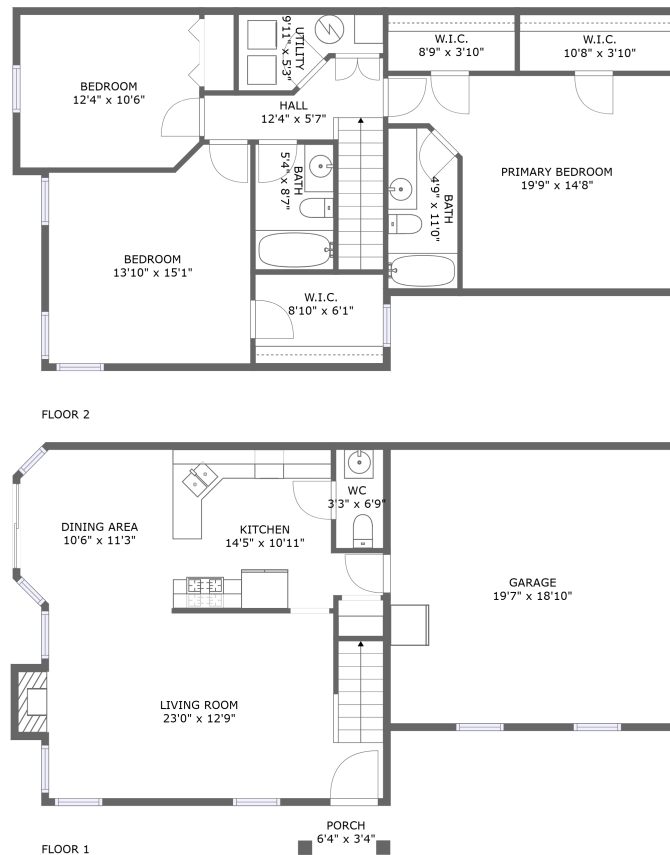


Home report

1401 Millbrook Drive, Algonquin, McHenry County, Illinois,
United States, 60102



Total Area: 1522 sq. ft

Floor 1: 571 sq. ft, Floor 2: 951 sq. ft

Excluded: Garage 368 sq. ft, Outdoor Porch 22 sq. ft, Fireplace 11 sq. ft, Walls: 145 sq. ft

Property summary



2 Floors



3 Bedrooms



2 Bathrooms

Home report

**1401 Millbrook Drive, Algonquin, McHenry County, Illinois,
United States, 60102**



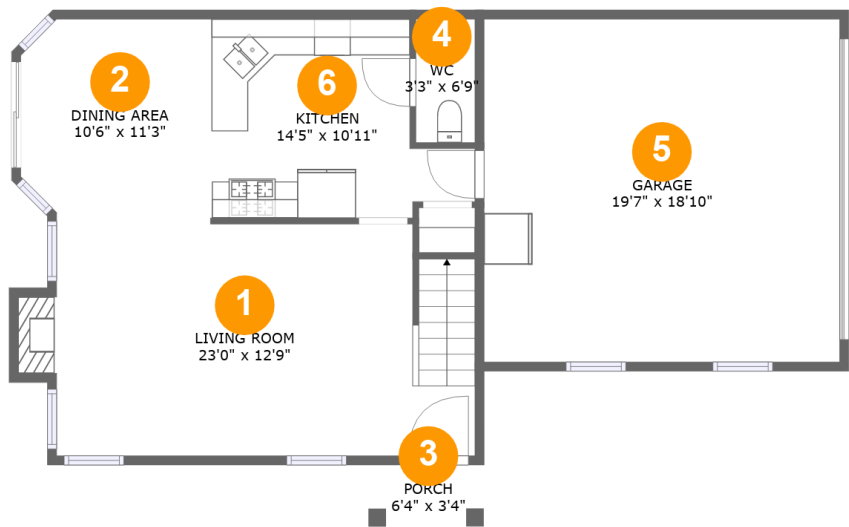
1
Half baths



1
Garages

Home report

1401 Millbrook Drive, Algonquin, McHenry County, Illinois,
United States, 60102



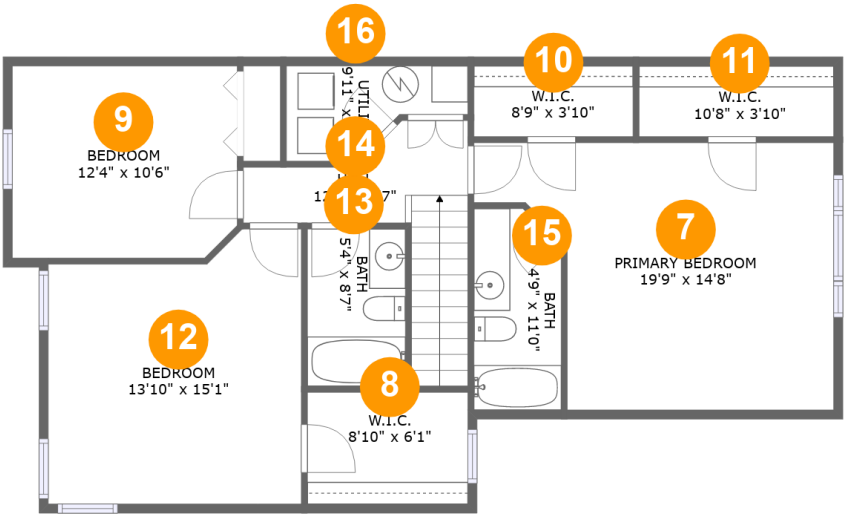
Room dimensions

Floor 1 Total:571sqft Excluded: 401sqft

#		Max Dimensions	sqft	Included
1	Living Room	23'0" x 12'9"	294 sq. ft	Yes
2	Dining Area	10'6" x 11'3"	113 sq. ft	Yes
3	Porch	6'4" x 3'4"	22 sq. ft	No
4	WC	3'3" x 6'9"	22 sq. ft	Yes
5	Garage	19'7" x 18'10"	368 sq. ft	No
6	Kitchen	14'5" x 10'11"	129 sq. ft	Yes

Home report

1401 Millbrook Drive, Algonquin, McHenry County, Illinois,
United States, 60102



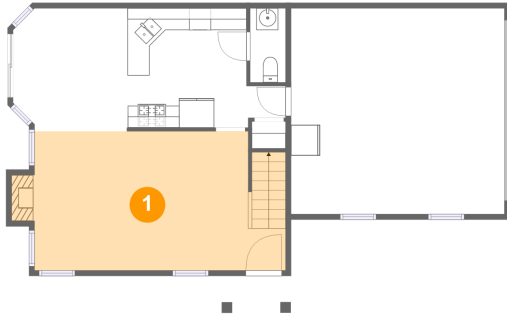
Room dimensions

Floor 2 Total:951sqft Excluded: 0sqft

#		Max Dimensions	sqft	Included
7	Primary Bedroom	19'9" x 14'8"	233 sq. ft	Yes
8	W.I.C.	8'10" x 6'1"	54 sq. ft	Yes
9	Bedroom	12'4" x 10'6"	128 sq. ft	Yes
10	W.I.C.	8'9" x 3'10"	34 sq. ft	Yes
11	W.I.C.	10'8" x 3'10"	41 sq. ft	Yes
12	Bedroom	13'10" x 15'1"	190 sq. ft	Yes
13	Bath	5'4" x 8'7"	46 sq. ft	Yes
14	Hall	12'4" x 5'7"	78 sq. ft	Yes
15	Bath	4'9" x 11'0"	50 sq. ft	Yes
16	Utility	9'11" x 5'3"	39 sq. ft	Yes

1401 Millbrook Drive, Algonquin, McHenry County, Illinois,
United States, 60102

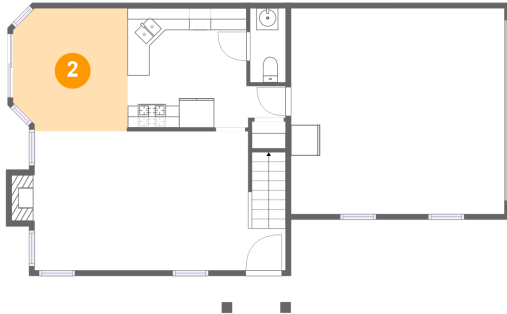
1 Floor 1 - Living Room



Max Dimensions: 23'0" x
12'9"
Calculated Area: 294 sq. ft
Included: Yes

Heated: Yes
Finished: Yes
Enclosed: Yes
Contiguous:
Yes
Permitted: Yes
Wet space: No
Addition: No
Conversion: No

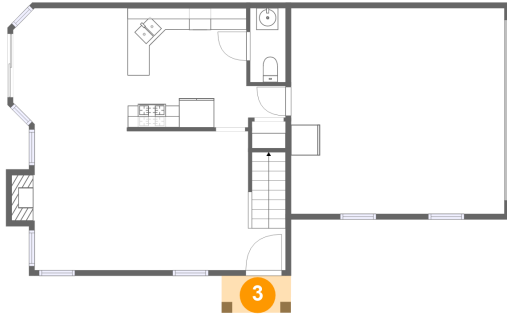
2 Floor 1 - Dining Area



Max Dimensions: 10'6" x
11'3"
Calculated Area: 113 sq. ft
Included: Yes

Heated: Yes
Finished: Yes
Enclosed: Yes
Contiguous:
Yes
Permitted: Yes
Wet space: No
Addition: No
Conversion: No

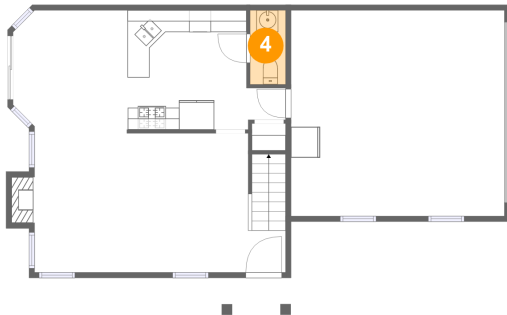
3 Floor 1 - Porch



Max Dimensions: 6'4" x 3'4"
Calculated Area: 22 sq. ft
Included: No

Heated: No
Finished: Yes
Enclosed: No
Contiguous: Yes
Permitted: Yes
Wet space: No
Addition: No
Conversion: No

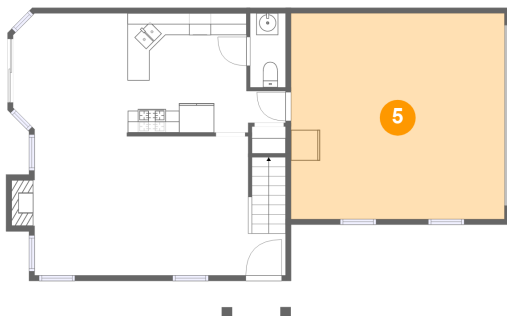
4 Floor 1 - WC



Max Dimensions: 3'3" x 6'9"
Calculated Area: 22 sq. ft
Included: Yes

Heated: Yes
Finished: Yes
Enclosed: Yes
Contiguous: Yes
Permitted: Yes
Wet space: Yes
Addition: No
Conversion: No

5 Floor 1 - Garage

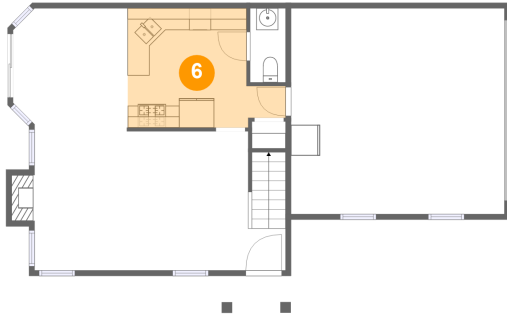


Max Dimensions: 19'7" x
18'10"
Calculated Area: 368 sq. ft
Included: No

Heated: No
Finished: No
Enclosed: Yes
Contiguous:
Yes
Permitted: Yes
Wet space: No
Addition: No
Conversion: No

1401 Millbrook Drive, Algonquin, McHenry County, Illinois,
United States, 60102

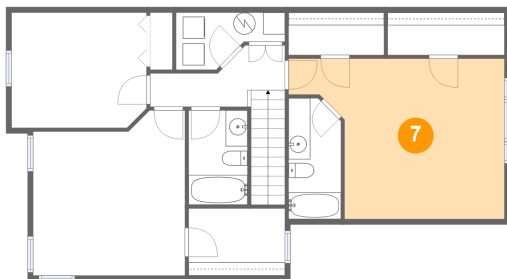
6 Floor 1 - Kitchen



Max Dimensions: 14'5" x 10'11"
Calculated Area: 129 sq. ft
Included: Yes

Heated: Yes
Finished: Yes
Enclosed: Yes
Contiguous: Yes
Permitted: Yes
Wet space: No
Addition: No
Conversion: No

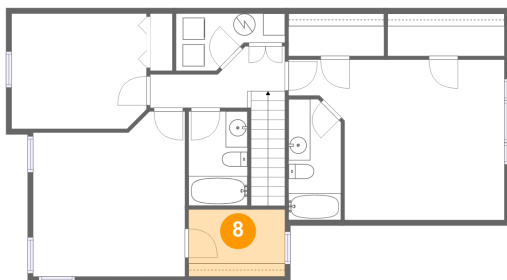
7 Floor 2 - Primary Bedroom



Max Dimensions: 19'9" x 14'8"
Calculated Area: 233 sq. ft
Included: Yes

Heated: Yes
Finished: Yes
Enclosed: Yes
Contiguous: Yes
Permitted: Yes
Wet space: No
Addition: No
Conversion: No

8 Floor 2 - W.I.C.

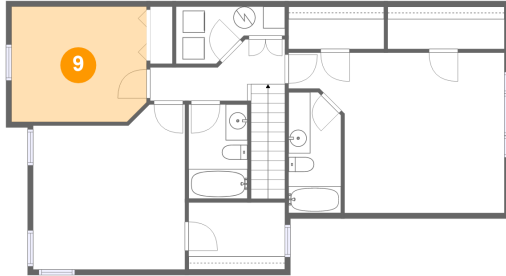


Max Dimensions: 8'10" x 6'1"
Calculated Area: 54 sq. ft
Included: Yes

Heated: Yes
Finished: Yes
Enclosed: Yes
Contiguous: Yes
Permitted: Yes
Wet space: No
Addition: No
Conversion: No

1401 Millbrook Drive, Algonquin, McHenry County, Illinois,
United States, 60102

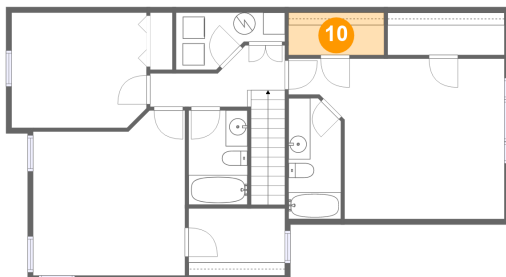
9 Floor 2 - Bedroom



Max Dimensions: 12'4" x 10'6"
Calculated Area: 128 sq. ft
Included: Yes

Heated: Yes
Finished: Yes
Enclosed: Yes
Contiguous: Yes
Permitted: Yes
Wet space: No
Addition: No
Conversion: No

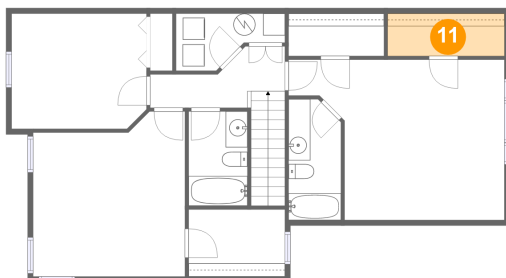
10 Floor 2 - W.I.C.



Max Dimensions: 8'9" x 3'10"
Calculated Area: 34 sq. ft
Included: Yes

Heated: Yes
Finished: Yes
Enclosed: Yes
Contiguous: Yes
Permitted: Yes
Wet space: No
Addition: No
Conversion: No

11 Floor 2 - W.I.C.



Max Dimensions: 10'8" x 3'10"
Calculated Area: 41 sq. ft
Included: Yes

Heated: Yes
Finished: Yes
Enclosed: Yes
Contiguous: Yes
Permitted: Yes
Wet space: No
Addition: No
Conversion: No

1401 Millbrook Drive, Algonquin, McHenry County, Illinois,
United States, 60102

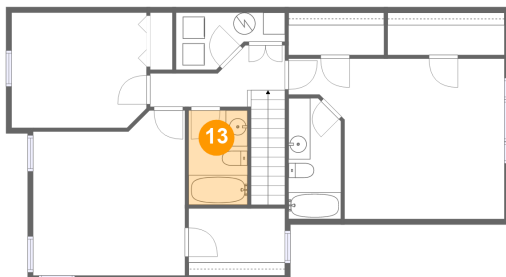
12 Floor 2 - Bedroom



Max Dimensions: 13'10" x 15'1"
Calculated Area: 190 sq. ft
Included: Yes

Heated: Yes
Finished: Yes
Enclosed: Yes
Contiguous: Yes
Permitted: Yes
Wet space: No
Addition: No
Conversion: No

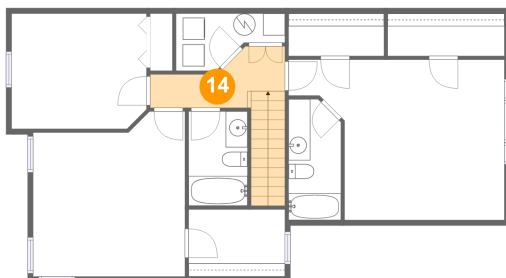
13 Floor 2 - Bath



Max Dimensions: 5'4" x 8'7"
Calculated Area: 46 sq. ft
Included: Yes

Heated: Yes
Finished: Yes
Enclosed: Yes
Contiguous: Yes
Permitted: Yes
Wet space: Yes
Addition: No
Conversion: No

14 Floor 2 - Hall

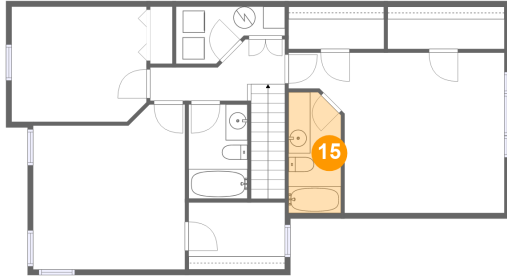


Max Dimensions: 12'4" x 5'7"
Calculated Area: 78 sq. ft
Included: Yes

Heated: Yes
Finished: Yes
Enclosed: Yes
Contiguous: Yes
Permitted: Yes
Wet space: No
Addition: No
Conversion: No

1401 Millbrook Drive, Algonquin, McHenry County, Illinois,
United States, 60102

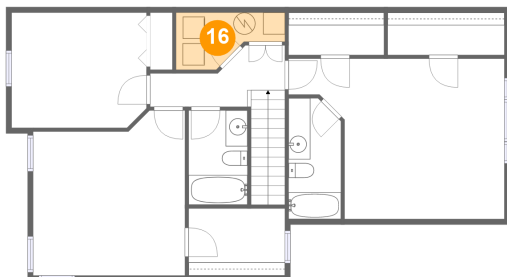
15 Floor 2 - Bath



Max Dimensions: 4'9" x
11'0"
Calculated Area: 50 sq. ft
Included: Yes

Heated: Yes
Finished: Yes
Enclosed: Yes
Contiguous:
Yes
Permitted: Yes
Wet space: Yes
Addition: No
Conversion: No

16 Floor 2 - Utility



Max Dimensions: 9'11" x
5'3"
Calculated Area: 39 sq. ft
Included: Yes

Heated: Yes
Finished: Yes
Enclosed: Yes
Contiguous:
Yes
Permitted: Yes
Wet space: No
Addition: No
Conversion: No