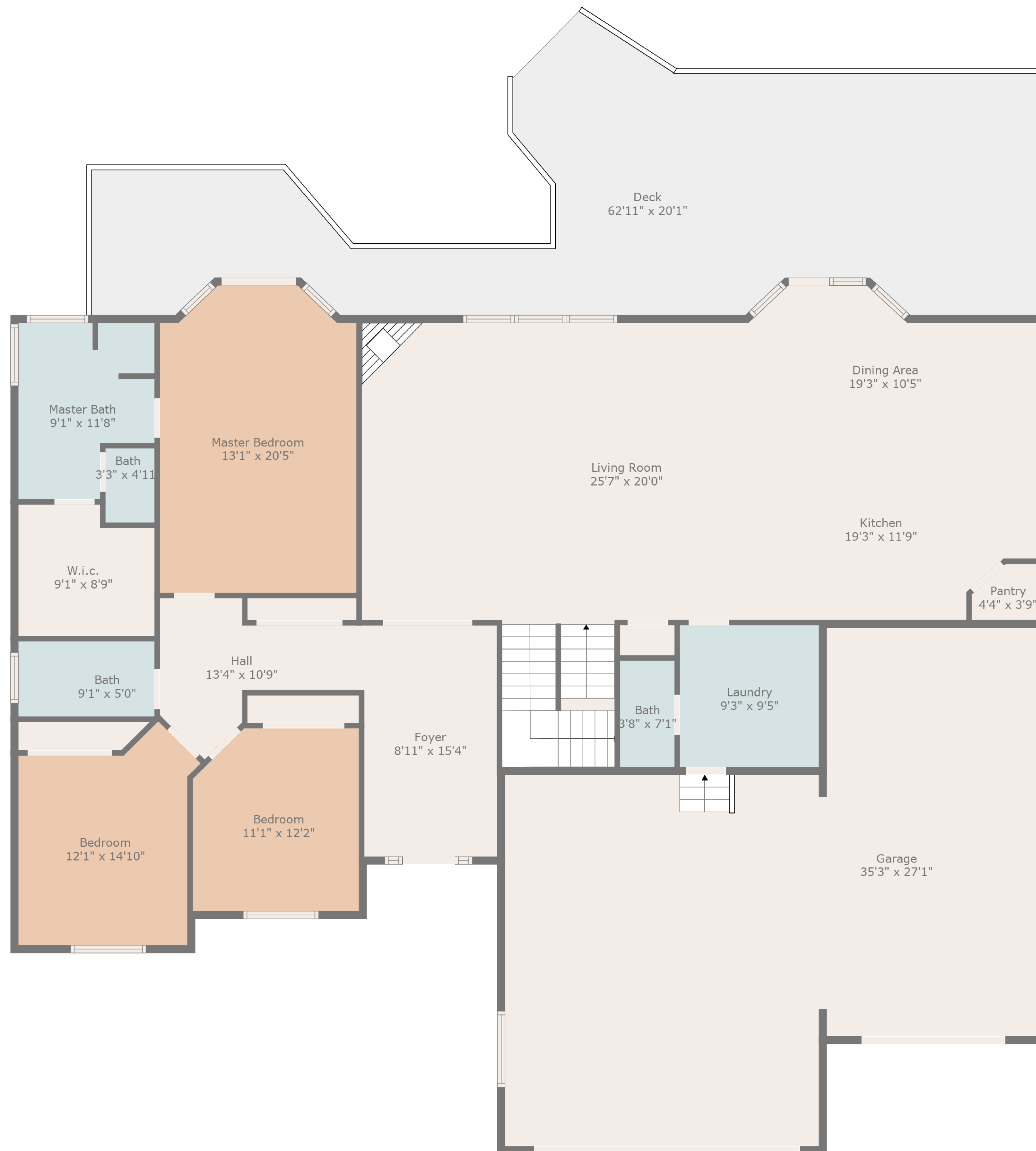


**TOTAL: 4344 sq. ft**

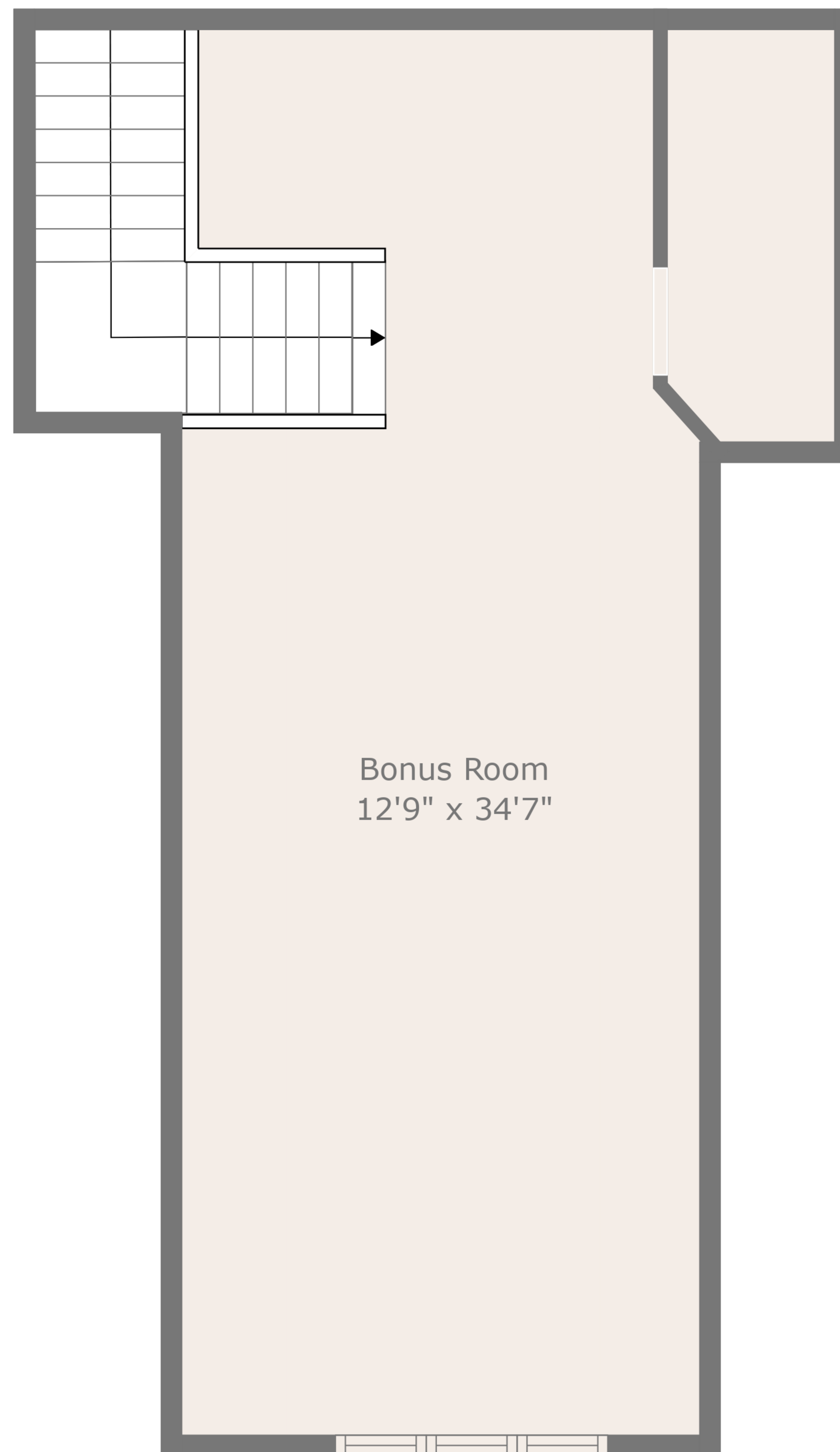
Below Ground: 1832 sq. ft, FLOOR 2: 2186 sq. ft, FLOOR 3: 326 sq. ft  
EXCLUDED AREAS: STORAGE: 224 sq. ft, DECK: 726 sq. ft, GARAGE: 899 sq. ft,  
LOW CEILING: 184 sq. ft





**TOTAL: 4344 sq. ft**

Below Ground: 1832 sq. ft, FLOOR 2: 2186 sq. ft, FLOOR 3: 326 sq. ft  
 EXCLUDED AREAS: STORAGE: 224 sq. ft, DECK: 726 sq. ft, GARAGE: 899 sq. ft,  
 LOW CEILING: 184 sq. ft

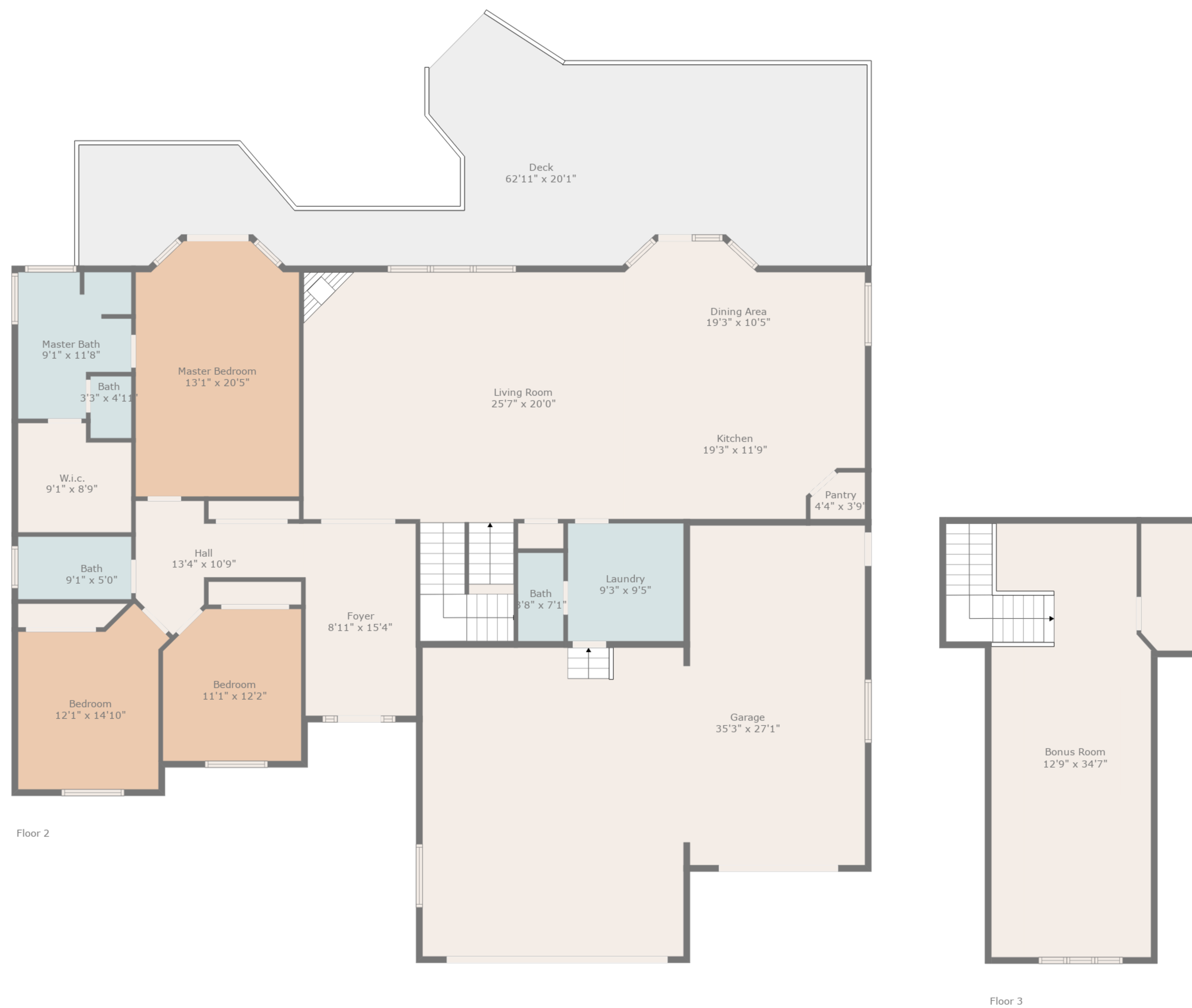


Bonus Room  
12'9" x 34'7"

**TOTAL: 4344 sq. ft**

Below Ground: 1832 sq. ft, FLOOR 2: 2186 sq. ft, FLOOR 3: 326 sq. ft  
EXCLUDED AREAS: STORAGE: 224 sq. ft, DECK: 726 sq. ft, GARAGE: 899 sq. ft,  
LOW CEILING: 184 sq. ft





**TOTAL: 4344 sq. ft**  
 Below Ground: 1832 sq. ft, FLOOR 2: 2186 sq. ft, FLOOR 3: 326 sq. ft  
 EXCLUDED AREAS: STORAGE: 224 sq. ft, DECK: 726 sq. ft, GARAGE: 899 sq. ft,  
 LOW CEILING: 184 sq. ft