

# 10 Glen Boulevard, Glen Rock, Bergen County, New Jersey, United States, 07452

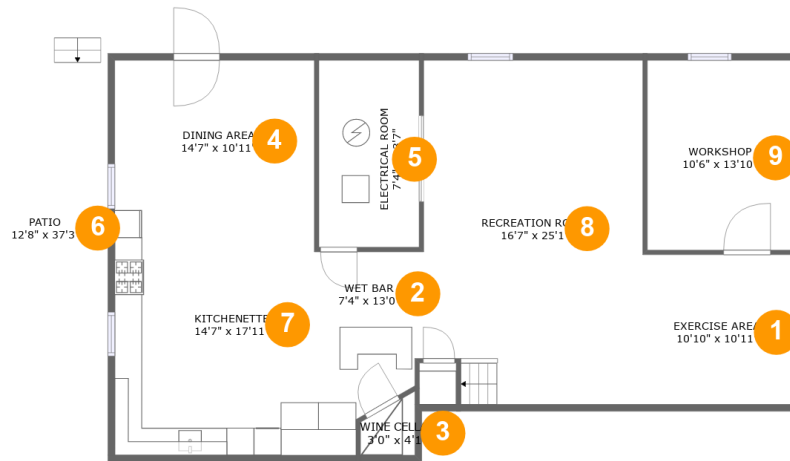


## Property Summary

**1** garages    **4** bedrooms    **2** bathrooms    **0** half baths

**3** floors    **3,434** Gross Living Area sqft    **5,512** total sqft

# 10 Glen Boulevard, Glen Rock, Bergen County, New Jersey, United States, 07452



## Room Dimensions

Floor 1

Total sqft: 1792

Living area: 1111

#	Room name	Dimensions	Area (sqft)	Counted as Living Area
1	Exercise Area	10'10" x 10'11"	119 sq. ft	Yes
2	Wet Bar	7'4" x 13'0"	92 sq. ft	Yes
3	Wine Cellar	3'0" x 4'1"	14 sq. ft	No
4	Dining Area	14'7" x 10'11"	159 sq. ft	Yes
5	Electrical Room	7'4" x 13'7"	100 sq. ft	No
6	Patio	12'8" x 37'3"	393 sq. ft	No
7	Kitchenette	14'7" x 17'11"	261 sq. ft	Yes
8	Recreation Room	16'7" x 25'1"	397 sq. ft	Yes
9	Workshop	10'6" x 13'10"	146 sq. ft	No

# 10 Glen Boulevard, Glen Rock, Bergen County, New Jersey, United States, 07452



## Room Dimensions

Floor 2

Total sqft: 2692

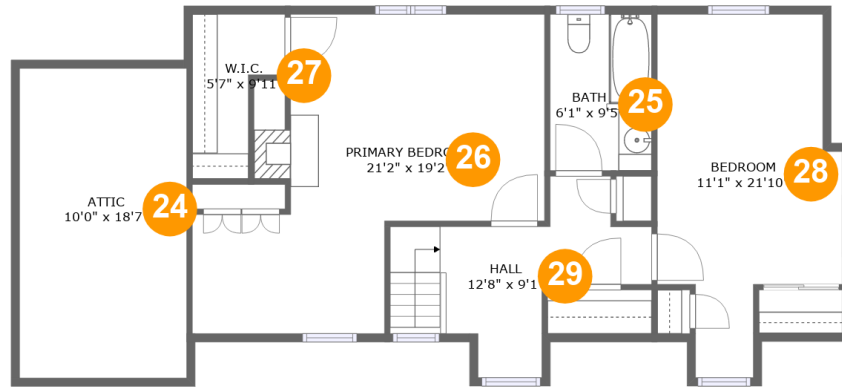
Living area: 1577

#	Room name	Dimensions	Area (sqft)	Counted as Living Area
10	Breakfast Nook	6'7" x 11'3"	74 sq. ft	Yes
11	Sunroom	11'3" x 16'0"	180 sq. ft	Yes
12	Living Room	15'11" x 13'6"	230 sq. ft	Yes
13	Breezeway	13'5" x 15'5"	218 sq. ft	No
14	Porch	10'10" x 3'4"	53 sq. ft	No
15	Kitchen	10'6" x 11'3"	118 sq. ft	Yes
16	Patio	23'6" x 15'2"	274 sq. ft	No
17	Garage	22'1" x 21'6"	476 sq. ft	No
18	Hall	14'10" x 3'8"	54 sq. ft	Yes
19	Foyer	9'9" x 11'3"	97 sq. ft	Yes
20	Dining Room	17'1" x 13'6"	230 sq. ft	Yes

**10 Glen Boulevard, Glen Rock, Bergen County,  
New Jersey, United States, 07452**

#	Room name	Dimensions	Area (sqft)	Counted as Living Area
21	Bath	8'1" x 11'0"	69 sq. ft	Yes
22	Bedroom	13'6" x 12'6"	163 sq. ft	Yes
23	Bedroom	13'8" x 13'6"	196 sq. ft	Yes

# 10 Glen Boulevard, Glen Rock, Bergen County, New Jersey, United States, 07452



## Room Dimensions

Floor 3

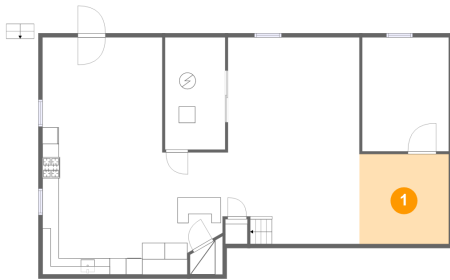
Total sqft: 1028

Living area: 746

#	Room name	Dimensions	Area (sqft)	Counted as Living Area
24	Attic	10'0" x 18'7"	137 sq. ft	No
25	Bath	6'1" x 9'5"	57 sq. ft	Yes
26	Primary Bedroom	21'2" x 19'2"	252 sq. ft	Yes
27	W.i.c.	5'7" x 9'11"	41 sq. ft	Yes
28	Bedroom	11'1" x 21'10"	190 sq. ft	Yes
29	Hall	12'8" x 9'1"	103 sq. ft	Yes

# 10 Glen Boulevard, Glen Rock, Bergen County, New Jersey, United States, 07452

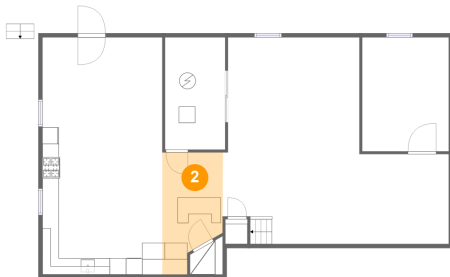
## 1 Floor 1 - Exercise Area



Dimensions: 10'10" x 10'11"  
Area: 119 sq. ft  
Counted as Living Area:  
Yes

Heated: Yes  
Finished: Yes  
Enclosed: Yes  
Contiguous:  
Yes  
Permitted: Yes  
Wet Space: No  
Addition: No  
Conversion: No

## 2 Floor 1 - Wet Bar

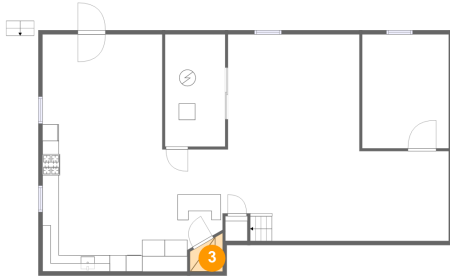


Dimensions: 7'4" x 13'0"  
Area: 92 sq. ft  
Counted as Living Area:  
Yes

Heated: Yes  
Finished: Yes  
Enclosed: Yes  
Contiguous:  
Yes  
Permitted: Yes  
Wet Space: No  
Addition: No  
Conversion: No

# 10 Glen Boulevard, Glen Rock, Bergen County, New Jersey, United States, 07452

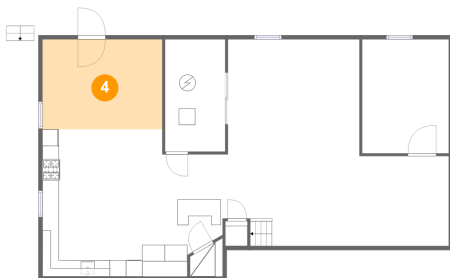
## 3 Floor 1 - Wine Cellar



Dimensions: 3'0" x 4'1"  
Area: 14 sq. ft  
Counted as Living Area: No

Heated: No  
Finished: No  
Enclosed: Yes  
Contiguous: Yes  
Permitted: Yes  
Wet Space: No  
Addition: No  
Conversion: No

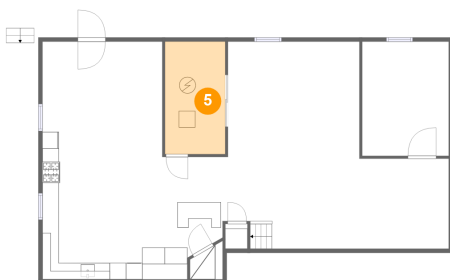
## 4 Floor 1 - Dining Area



Dimensions: 14'7" x 10'11"  
Area: 159 sq. ft  
Counted as Living Area:  
Yes

Heated: Yes  
Finished: Yes  
Enclosed: Yes  
Contiguous:  
Yes  
Permitted: Yes  
Wet Space: No  
Addition: No  
Conversion: No

## 5 Floor 1 - Electrical Room

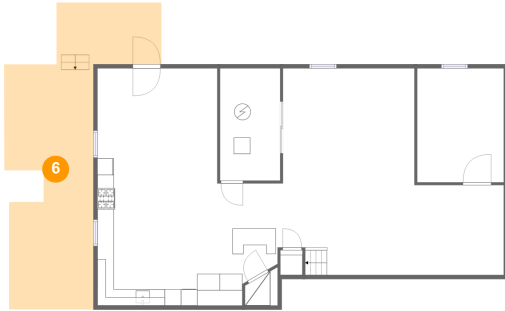


Dimensions: 7'4" x 13'7"  
Area: 100 sq. ft  
Counted as Living Area: No

Heated: No  
Finished: No  
Enclosed: Yes  
Contiguous: Yes  
Permitted: Yes  
Wet Space: No  
Addition: No  
Conversion: No

# 10 Glen Boulevard, Glen Rock, Bergen County, New Jersey, United States, 07452

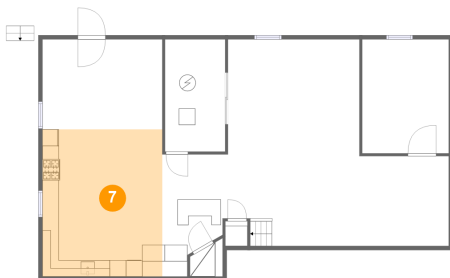
## 6 Floor 1 - Patio



Dimensions: 12'8" x 37'3"  
Area: 393 sq. ft  
Counted as Living Area: No

Heated: No  
Finished: Yes  
Enclosed: No  
Contiguous: Yes  
Permitted: Yes  
Wet Space: No  
Addition: No  
Conversion: No

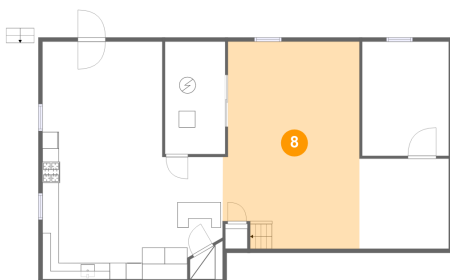
## 7 Floor 1 - Kitchenette



Dimensions: 14'7" x 17'11"  
Area: 261 sq. ft  
Counted as Living Area:  
Yes

Heated: Yes  
Finished: Yes  
Enclosed: Yes  
Contiguous:  
Yes  
Permitted: Yes  
Wet Space: No  
Addition: No  
Conversion: No

## 8 Floor 1 - Recreation Room



Dimensions: 16'7" x 25'1"  
Area: 397 sq. ft  
Counted as Living Area:  
Yes

Heated: Yes  
Finished: Yes  
Enclosed: Yes  
Contiguous:  
Yes  
Permitted: Yes  
Wet Space: No  
Addition: No  
Conversion: No



# 10 Glen Boulevard, Glen Rock, Bergen County, New Jersey, United States, 07452

## 9 Floor 1 - Workshop



Dimensions: 10'6" x 13'10"  
Area: 146 sq. ft  
Counted as Living Area: No

Heated: No  
Finished: No  
Enclosed: Yes  
Contiguous: Yes  
Permitted: Yes  
Wet Space: No  
Addition: No  
Conversion: No

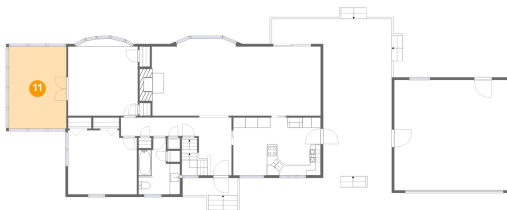
## 10 Floor 2 - Breakfast Nook



Dimensions: 6'7" x 11'3"  
Area: 74 sq. ft  
Counted as Living Area:  
Yes

Heated: Yes  
Finished: Yes  
Enclosed: Yes  
Contiguous:  
Yes  
Permitted: Yes  
Wet Space: No  
Addition: No  
Conversion: No

## 11 Floor 2 - Sunroom



Dimensions: 11'3" x 16'0"  
Area: 180 sq. ft  
Counted as Living Area:  
Yes

Heated: Yes  
Finished: Yes  
Enclosed: Yes  
Contiguous:  
Yes  
Permitted: Yes  
Wet Space: No  
Addition: No  
Conversion: No

# 10 Glen Boulevard, Glen Rock, Bergen County, New Jersey, United States, 07452

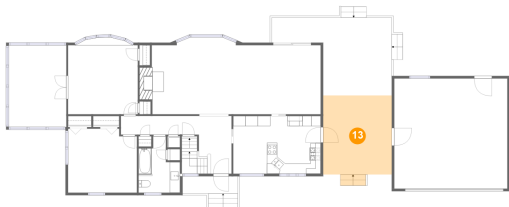
## 12 Floor 2 - Living Room



Dimensions: 15'11" x 13'6"  
Area: 230 sq. ft  
Counted as Living Area:  
Yes

Heated: Yes  
Finished: Yes  
Enclosed: Yes  
Contiguous:  
Yes  
Permitted: Yes  
Wet Space: No  
Addition: No  
Conversion: No

## 13 Floor 2 - Breezeway



Dimensions: 13'5" x 15'5"  
Area: 218 sq. ft  
Counted as Living Area: No

Heated: No  
Finished: Yes  
Enclosed: No  
Contiguous: Yes  
Permitted: Yes  
Wet Space: No  
Addition: No  
Conversion: No

## 14 Floor 2 - Porch



Dimensions: 10'10" x 3'4"  
Area: 53 sq. ft  
Counted as Living Area: No

Heated: No  
Finished: Yes  
Enclosed: No  
Contiguous: Yes  
Permitted: Yes  
Wet Space: No  
Addition: No  
Conversion: No

# 10 Glen Boulevard, Glen Rock, Bergen County, New Jersey, United States, 07452

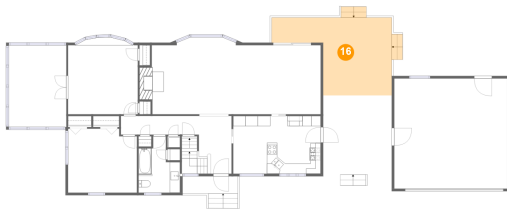
## 15 Floor 2 - Kitchen



Dimensions: 10'6" x 11'3"  
Area: 118 sq. ft  
Counted as Living Area:  
Yes

Heated: Yes  
Finished: Yes  
Enclosed: Yes  
Contiguous:  
Yes  
Permitted: Yes  
Wet Space: No  
Addition: No  
Conversion: No

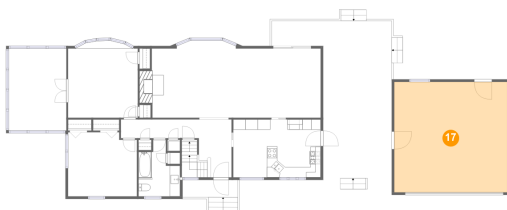
## 16 Floor 2 - Patio



Dimensions: 23'6" x 15'2"  
Area: 274 sq. ft  
Counted as Living Area: No

Heated: No  
Finished: Yes  
Enclosed: No  
Contiguous: Yes  
Permitted: Yes  
Wet Space: No  
Addition: No  
Conversion: No

## 17 Floor 2 - Garage



Dimensions: 22'1" x 21'6"  
Area: 476 sq. ft  
Counted as Living Area: No

Heated: No  
Finished: No  
Enclosed: Yes  
Contiguous: Yes  
Permitted: Yes  
Wet Space: No  
Addition: No  
Conversion: No

# 10 Glen Boulevard, Glen Rock, Bergen County, New Jersey, United States, 07452

## 18 Floor 2 - Hall



Dimensions: 14'10" x 3'8"  
Area: 54 sq. ft  
Counted as Living Area:  
Yes

Heated: Yes  
Finished: Yes  
Enclosed: Yes  
Contiguous:  
Yes  
Permitted: Yes  
Wet Space: No  
Addition: No  
Conversion: No

## 19 Floor 2 - Foyer



Dimensions: 9'9" x 11'3"  
Area: 97 sq. ft  
Counted as Living Area:  
Yes

Heated: Yes  
Finished: Yes  
Enclosed: Yes  
Contiguous:  
Yes  
Permitted: Yes  
Wet Space: No  
Addition: No  
Conversion: No

## 20 Floor 2 - Dining Room



Dimensions: 17'1" x 13'6"  
Area: 230 sq. ft  
Counted as Living Area:  
Yes

Heated: Yes  
Finished: Yes  
Enclosed: Yes  
Contiguous:  
Yes  
Permitted: Yes  
Wet Space: No  
Addition: No  
Conversion: No

# 10 Glen Boulevard, Glen Rock, Bergen County, New Jersey, United States, 07452

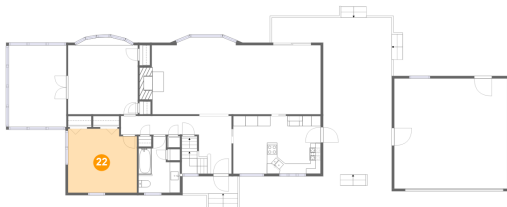
## 21 Floor 2 - Bath



Dimensions: 8'1" x 11'0"  
Area: 69 sq. ft  
Counted as Living Area:  
Yes

Heated: Yes  
Finished: Yes  
Enclosed: Yes  
Contiguous:  
Yes  
Permitted: Yes  
Wet Space: Yes  
Addition: No  
Conversion: No

## 22 Floor 2 - Bedroom



Dimensions: 13'6" x 12'6"  
Area: 163 sq. ft  
Counted as Living Area:  
Yes

Heated: Yes  
Finished: Yes  
Enclosed: Yes  
Contiguous:  
Yes  
Permitted: Yes  
Wet Space: No  
Addition: No  
Conversion: No

## 23 Floor 2 - Bedroom

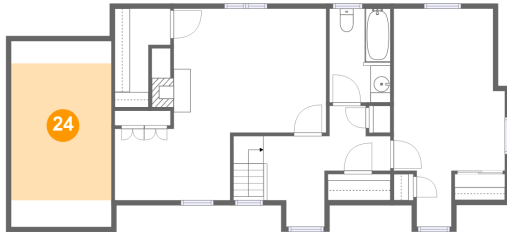


Dimensions: 13'8" x 13'6"  
Area: 196 sq. ft  
Counted as Living Area:  
Yes

Heated: Yes  
Finished: Yes  
Enclosed: Yes  
Contiguous:  
Yes  
Permitted: Yes  
Wet Space: No  
Addition: No  
Conversion: No

# 10 Glen Boulevard, Glen Rock, Bergen County, New Jersey, United States, 07452

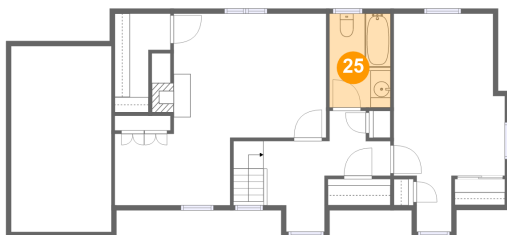
## 24 Floor 3 - Attic



Dimensions: 10'0" x 18'7"  
Area: 137 sq. ft  
Counted as Living Area: No

Heated: No  
Finished: No  
Enclosed: Yes  
Contiguous: Yes  
Permitted: Yes  
Wet Space: No  
Addition: No  
Conversion: No

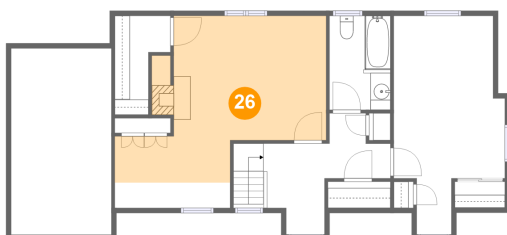
## 25 Floor 3 - Bath



Dimensions: 6'1" x 9'5"  
Area: 57 sq. ft  
Counted as Living Area:  
Yes

Heated: Yes  
Finished: Yes  
Enclosed: Yes  
Contiguous:  
Yes  
Permitted: Yes  
Wet Space: Yes  
Addition: No  
Conversion: No

## 26 Floor 3 - Primary Bedroom

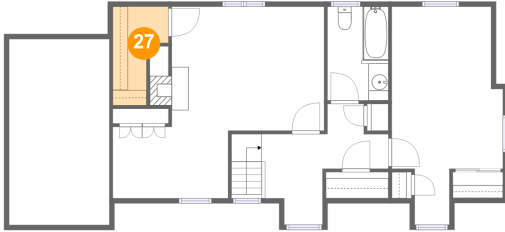


Dimensions: 21'2" x 19'2"  
Area: 252 sq. ft  
Counted as Living Area:  
Yes

Heated: Yes  
Finished: Yes  
Enclosed: Yes  
Contiguous:  
Yes  
Permitted: Yes  
Wet Space: No  
Addition: No  
Conversion: No

# 10 Glen Boulevard, Glen Rock, Bergen County, New Jersey, United States, 07452

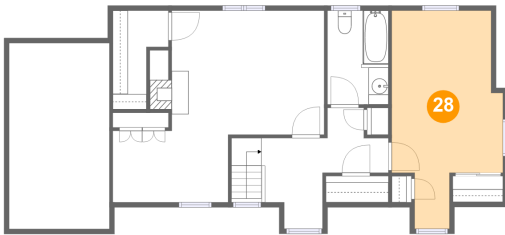
## 27 Floor 3 - W.i.c.



Dimensions: 5'7" x 9'11"  
Area: 41 sq. ft  
Counted as Living Area:  
Yes

Heated: Yes  
Finished: Yes  
Enclosed: Yes  
Contiguous:  
Yes  
Permitted: Yes  
Wet Space: No  
Addition: No  
Conversion: No

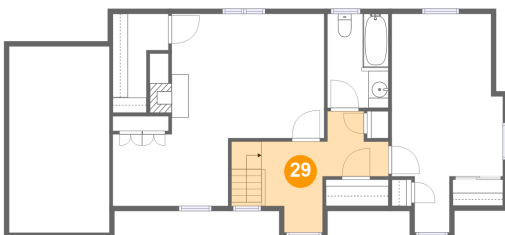
## 28 Floor 3 - Bedroom



Dimensions: 11'1" x 21'10"  
Area: 190 sq. ft  
Counted as Living Area:  
Yes

Heated: Yes  
Finished: Yes  
Enclosed: Yes  
Contiguous:  
Yes  
Permitted: Yes  
Wet Space: No  
Addition: No  
Conversion: No

## 29 Floor 3 - Hall



Dimensions: 12'8" x 9'1"  
Area: 103 sq. ft  
Counted as Living Area:  
Yes

Heated: Yes  
Finished: Yes  
Enclosed: Yes  
Contiguous:  
Yes  
Permitted: Yes  
Wet Space: No  
Addition: No  
Conversion: No