

# 406-3018 St George St

Port Moody, BC V3H 2H7

Total Area 1,085 SQ.FT.

Ceiling Height: 9'0"

2



BEDROOMS

2

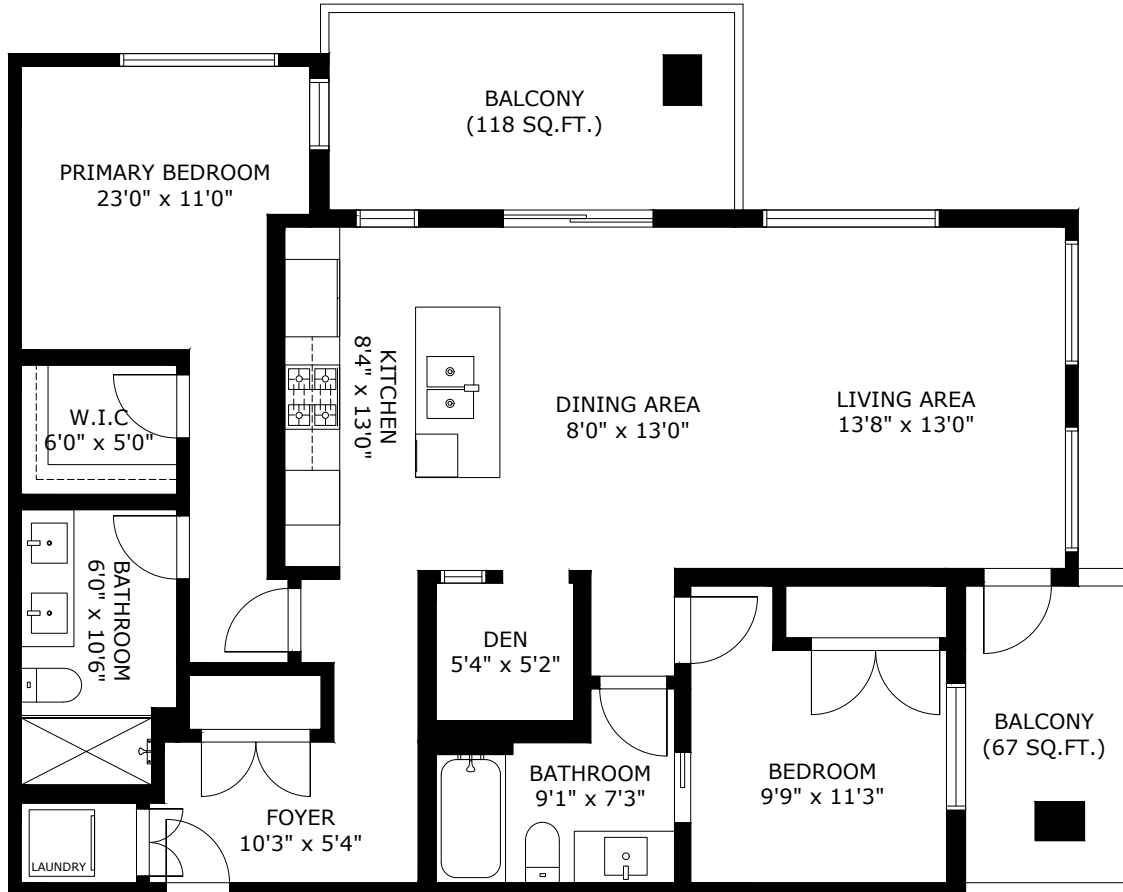


BATHROOMS

1,085



TOTAL SQ.FT.



406-3018 ST GEORGE ST PORT MOODY BC V3H 2H7

The floor plan illustration is not suitable for construction/architectural purposes. Measurements are approximate and may not be to scale. This communication is not intended to cause or induce breach of an existing agency agreement.



**3D IMMERSIVE**

Tours Photos Floor Plans

Professionally measured by: 3D Immersive Marketing Ltd.

Lead Floor Planner: *Sara Alexander*

Quality Assurance: *Jessica Graham*