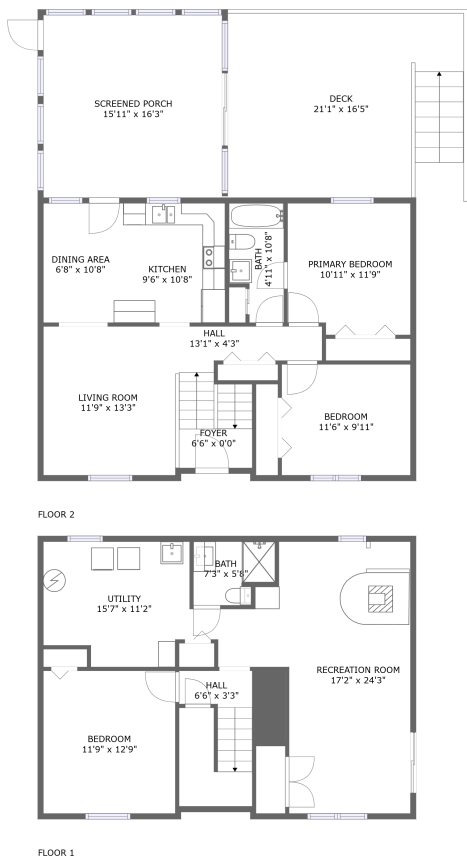


Home report

7721 Bridle Path Circle, Horse Shoe Farms Estates, Frederick,
Frederick County, Maryland, United States, 21701



Total Area: 1439 sq. ft


Below Ground: 649 sq. ft, Floor 2: 790 sq. ft

Excluded: Utility 142 sq. ft, Screened porch 261 sq. ft, Deck 328 sq. ft, Walls: 139 sq. ft

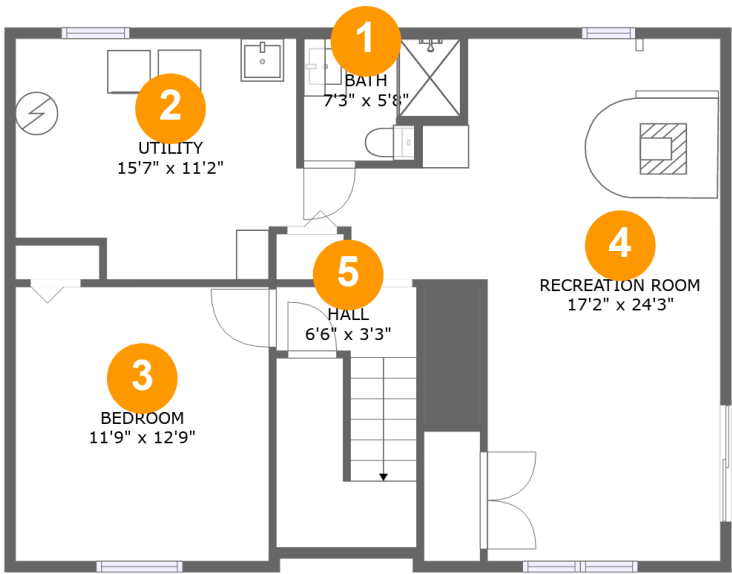
Property summary

 2 Floors

 3 Bedrooms

 2 Bathrooms

7721 Bridle Path Circle, Horse Shoe Farms Estates, Frederick,
Frederick County, Maryland, United States, 21701



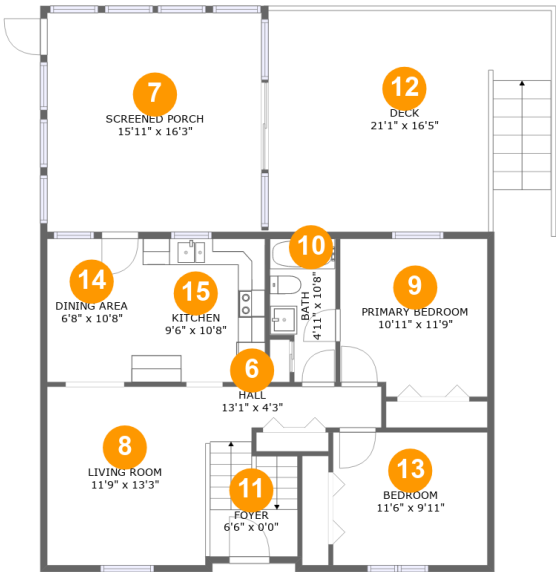
Room dimensions

Floor 1 Below ground Total:649sqft Excluded: 142sqft

#		Max Dimensions	sqft	Included
1	Bath	7'3" x 5'8"	37 sq. ft	Yes
2	Utility	15'7" x 11'2"	142 sq. ft	No
3	Bedroom	11'9" x 12'9"	150 sq. ft	Yes
4	Recreation Room	17'2" x 24'3"	305 sq. ft	Yes
5	Hall	6'6" x 3'3"	38 sq. ft	Yes

Home report

7721 Bridle Path Circle, Horse Shoe Farms Estates, Frederick,
Frederick County, Maryland, United States, 21701



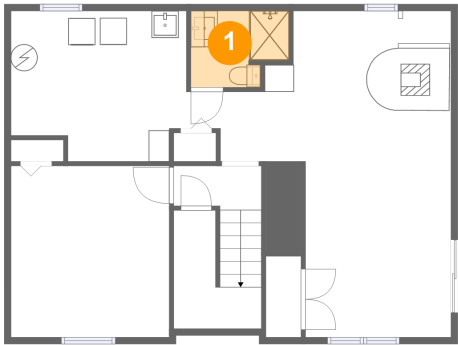
Room dimensions

Floor 2 Total:790sqft Excluded: 589sqft

#		Max Dimensions	sqft	Included
6	Hall	13'1" x 4'3"	44 sq. ft	Yes
7	Screened Porch	15'11" x 16'3"	261 sq. ft	No
8	Living Room	11'9" x 13'3"	156 sq. ft	Yes
9	Primary Bedroom	10'11" x 11'9"	125 sq. ft	Yes
10	Bath	4'11" x 10'8"	46 sq. ft	Yes
11	Foyer	6'6" x 0'0"	54 sq. ft	Yes
12	Deck	21'1" x 16'5"	328 sq. ft	No
13	Bedroom	11'6" x 9'11"	114 sq. ft	Yes
14	Dining Area	6'8" x 10'8"	71 sq. ft	Yes
15	Kitchen	9'6" x 10'8"	102 sq. ft	Yes

7721 Bridle Path Circle, Horse Shoe Farms Estates, Frederick,
Frederick County, Maryland, United States, 21701

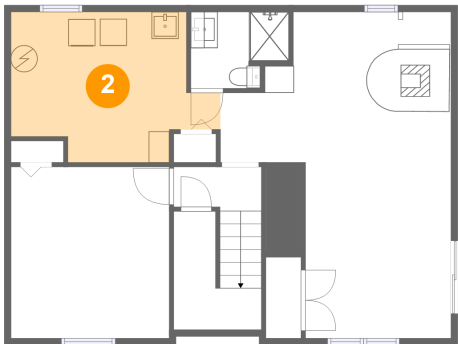
1 Floor 1 - Bath



Max Dimensions: 7'3" x 5'8"
Calculated Area: 37 sq. ft
Included: Yes

Heated: Yes
Finished: Yes
Enclosed: Yes
Contiguous: Yes
Permitted: Yes
Wet space: Yes
Addition: No
Conversion: No

2 Floor 1 - Utility

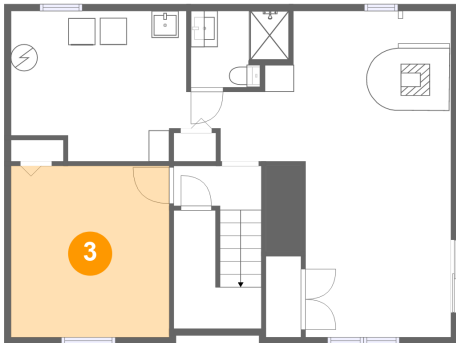


Max Dimensions: 15'7" x 11'2"
Calculated Area: 142 sq. ft
Included: No

Heated: Yes
Finished: No
Enclosed: Yes
Contiguous: Yes
Permitted: Yes
Wet space: No
Addition: No
Conversion: No

7721 Bridle Path Circle, Horse Shoe Farms Estates, Frederick,
Frederick County, Maryland, United States, 21701

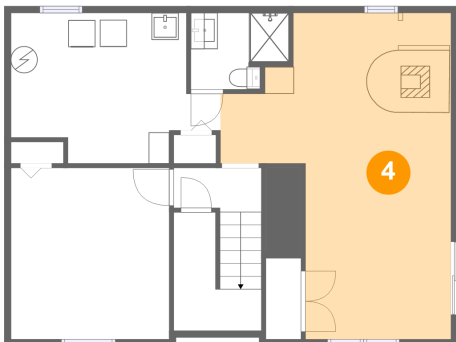
3 Floor 1 - Bedroom



Max Dimensions: 11'9" x 12'9"
Calculated Area: 150 sq. ft
Included: Yes

Heated: Yes
Finished: Yes
Enclosed: Yes
Contiguous: Yes
Permitted: Yes
Wet space: No
Addition: No
Conversion: No

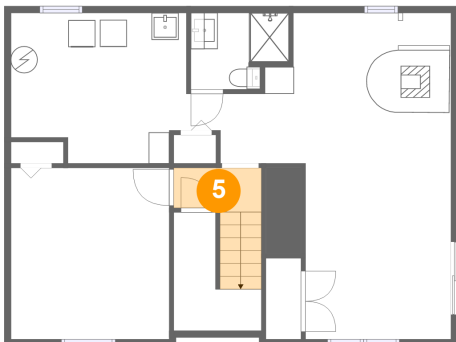
4 Floor 1 - Recreation Room



Max Dimensions: 17'2" x 24'3"
Calculated Area: 305 sq. ft
Included: Yes

Heated: Yes
Finished: Yes
Enclosed: Yes
Contiguous: Yes
Permitted: Yes
Wet space: No
Addition: No
Conversion: No

5 Floor 1 - Hall

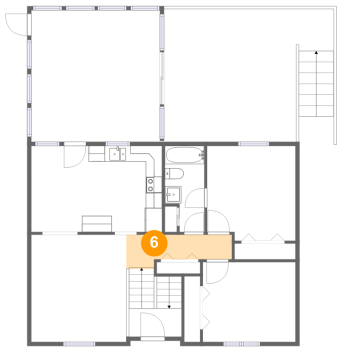


Max Dimensions: 6'6" x 3'3"
Calculated Area: 38 sq. ft
Included: Yes

Heated: Yes
Finished: Yes
Enclosed: Yes
Contiguous: Yes
Permitted: Yes
Wet space: No
Addition: No
Conversion: No

7721 Bridle Path Circle, Horse Shoe Farms Estates, Frederick,
Frederick County, Maryland, United States, 21701

6 Floor 2 - Hall



Max Dimensions: 13'1" x 4'3"
Calculated Area: 44 sq. ft
Included: Yes

Heated: Yes
Finished: Yes
Enclosed: Yes
Contiguous: Yes
Permitted: Yes
Wet space: No
Addition: No
Conversion: No

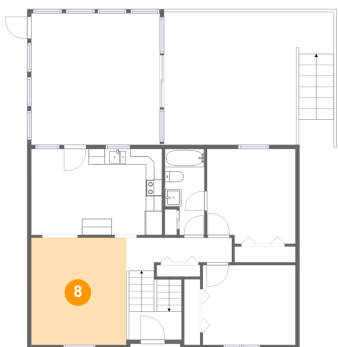
7 Floor 2 - Screened Porch



Max Dimensions: 15'11" x 16'3"
Calculated Area: 261 sq. ft
Included: No

Heated: No
Finished: Yes
Enclosed: No
Contiguous: Yes
Permitted: Yes
Wet space: No
Addition: No
Conversion: No

8 Floor 2 - Living Room

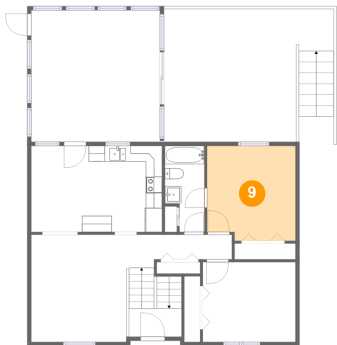


Max Dimensions: 11'9" x 13'3"
Calculated Area: 156 sq. ft
Included: Yes

Heated: Yes
Finished: Yes
Enclosed: Yes
Contiguous: Yes
Permitted: Yes
Wet space: No
Addition: No
Conversion: No

7721 Bridle Path Circle, Horse Shoe Farms Estates, Frederick,
Frederick County, Maryland, United States, 21701

9 Floor 2 - Primary Bedroom



Max Dimensions: 10'11" x 11'9"
Calculated Area: 125 sq. ft
Included: Yes

Heated: Yes
Finished: Yes
Enclosed: Yes
Contiguous: Yes
Permitted: Yes
Wet space: No
Addition: No
Conversion: No

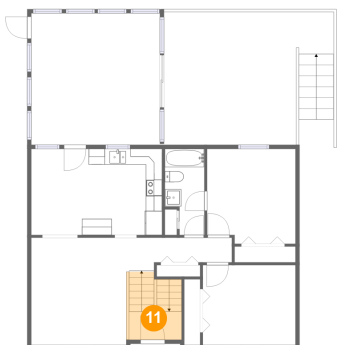
10 Floor 2 - Bath



Max Dimensions: 4'11" x 10'8"
Calculated Area: 46 sq. ft
Included: Yes

Heated: Yes
Finished: Yes
Enclosed: Yes
Contiguous: Yes
Permitted: Yes
Wet space: Yes
Addition: No
Conversion: No

11 Floor 2 - Foyer

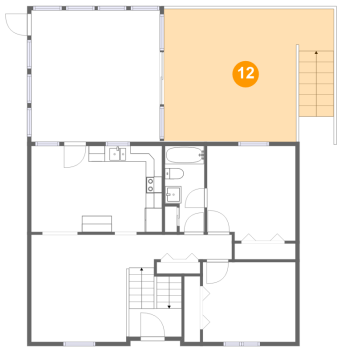


Max Dimensions: 6'6" x 0'0"
Calculated Area: 54 sq. ft
Included: Yes

Heated: Yes
Finished: Yes
Enclosed: Yes
Contiguous: Yes
Permitted: Yes
Wet space: No
Addition: No
Conversion: No

7721 Bridle Path Circle, Horse Shoe Farms Estates, Frederick,
Frederick County, Maryland, United States, 21701

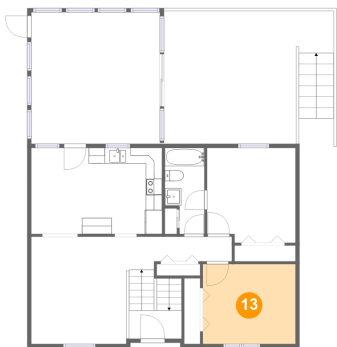
12 Floor 2 - Deck



Max Dimensions: 21'1" x 16'5"
Calculated Area: 328 sq. ft
Included: No

Heated: No
Finished: Yes
Enclosed: No
Contiguous: Yes
Permitted: Yes
Wet space: No
Addition: No
Conversion: No

13 Floor 2 - Bedroom



Max Dimensions: 11'6" x 9'11"
Calculated Area: 114 sq. ft
Included: Yes

Heated: Yes
Finished: Yes
Enclosed: Yes
Contiguous: Yes
Permitted: Yes
Wet space: No
Addition: No
Conversion: No

14 Floor 2 - Dining Area

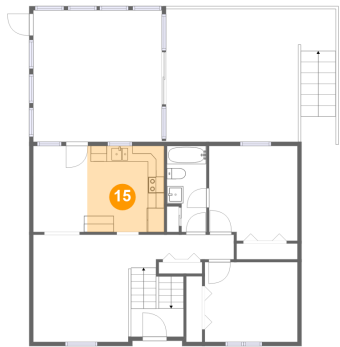


Max Dimensions: 6'8" x 10'8"
Calculated Area: 71 sq. ft
Included: Yes

Heated: Yes
Finished: Yes
Enclosed: Yes
Contiguous: Yes
Permitted: Yes
Wet space: No
Addition: No
Conversion: No

7721 Bridle Path Circle, Horse Shoe Farms Estates, Frederick,
Frederick County, Maryland, United States, 21701

15 Floor 2 - Kitchen



Max Dimensions: 9'6" x 10'8"
Calculated Area: 102 sq. ft
Included: Yes

Heated: Yes
Finished: Yes
Enclosed: Yes
Contiguous: Yes
Permitted: Yes
Wet space: No
Addition: No
Conversion: No