

Home report

433 Rollingwood Court, Heatherstone, Laymantown, Troutville,
Botetourt County, Virginia, United States, 24175



Total Area: 2549 sq. ft
Below Ground: 0 sq. ft, Floor 2: 1550 sq. ft, Floor 3: 999 sq. ft
Excluded: Basement 363 sq. ft, Garage 976 sq. ft, Hall 149 sq. ft, Porch 38 sq. ft, Deck 220 sq. ft, Fireplace 13 sq. ft, Open to below 89 sq. ft, Low ceiling 193 sq. ft, Attic 33 sq. ft, Walls: 270 sq. ft

Property summary

**3**
Floors

**3**
Bedrooms

**3**
Bathrooms

Home report

**433 Rollingwood Court, Heatherstone, Laymantown, Troutville,
Botetourt County, Virginia, United States, 24175**



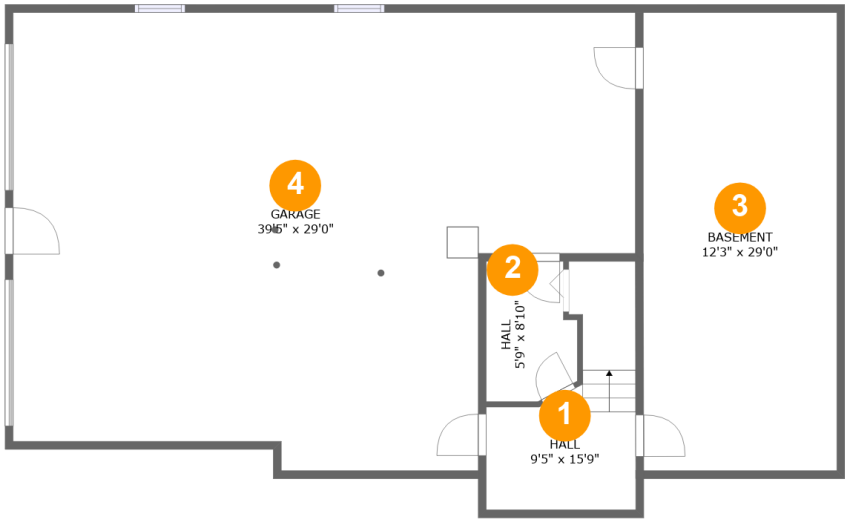
1
Half baths



1
Garages

Home report

433 Rollingwood Court, Heatherstone, Laymantown, Troutville,
Botetourt County, Virginia, United States, 24175



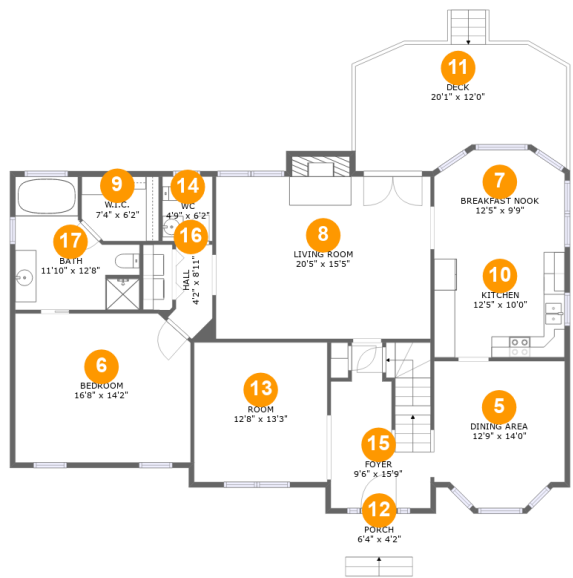
Room dimensions

Floor 1 Below ground Total:0sqft Excluded: 1488sqft

#		Max Dimensions	sqft	Included
1	Hall	9'5" x 15'9"	98 sq. ft	No
2	Hall	5'9" x 8'10"	46 sq. ft	No
3	Basement	12'3" x 29'0"	356 sq. ft	No
4	Garage	39'5" x 29'0"	976 sq. ft	No

Home report

433 Rollingwood Court, Heatherstone, Laymantown, Troutville,
Botetourt County, Virginia, United States, 24175



Room dimensions

Floor 2 Total:1550sqft Excluded: 271sqft

#		Max Dimensions	sqft	Included
5	Dining Area	12'9" x 14'0"	162 sq. ft	Yes
6	Bedroom	16'8" x 14'2"	232 sq. ft	Yes
7	Breakfast Nook	12'5" x 9'9"	112 sq. ft	Yes
8	Living Room	20'5" x 15'5"	325 sq. ft	Yes
9	W.I.C.	7'4" x 6'2"	43 sq. ft	Yes
10	Kitchen	12'5" x 10'0"	124 sq. ft	Yes
11	Deck	20'1" x 12'0"	220 sq. ft	No
12	Porch	6'4" x 4'2"	38 sq. ft	No
13	Room	12'8" x 13'3"	168 sq. ft	Yes
14	WC	4'9" x 6'2"	29 sq. ft	Yes
15	Foyer	9'6" x 15'9"	139 sq. ft	Yes

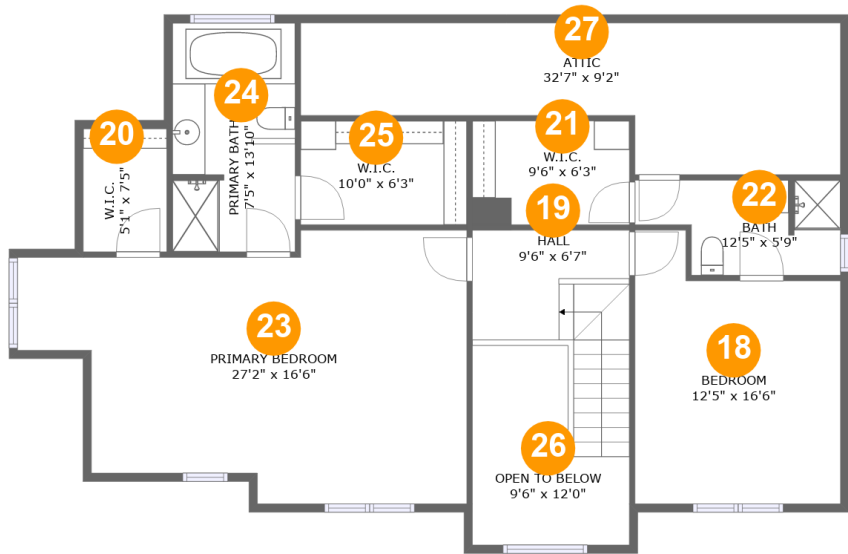
Home report

433 Rollingwood Court, Heatherstone, Laymantown, Troutville,
Botetourt County, Virginia, United States, 24175

#		Max Dimensions	sqft	Included
16	Hall	4'2" x 8'11"	31 sq. ft	Yes
17	Bath	11'10" x 12'8"	113 sq. ft	Yes

Home report

433 Rollingwood Court, Heatherstone, Laymantown, Troutville,
Botetourt County, Virginia, United States, 24175

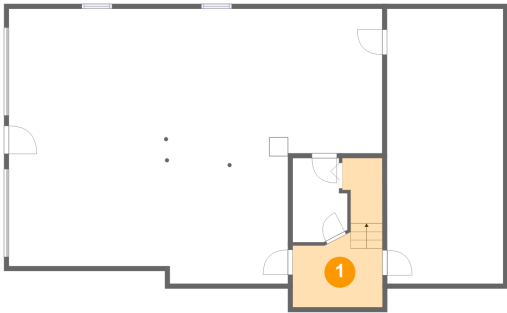


Room dimensions

Floor 3 Total:999sqft Excluded: 315sqft

#		Max Dimensions	sqft	Included
18	Bedroom	12'5" x 16'6"	176 sq. ft	Yes
19	Hall	9'6" x 6'7"	91 sq. ft	Yes
20	W.I.C.	5'1" x 7'5"	38 sq. ft	Yes
21	W.I.C.	9'6" x 6'3"	59 sq. ft	Yes
22	Bath	12'5" x 5'9"	60 sq. ft	Yes
23	Primary Bedroom	27'2" x 16'6"	360 sq. ft	Yes
24	Primary Bath	7'5" x 13'10"	101 sq. ft	Yes
25	W.I.C.	10'0" x 6'3"	63 sq. ft	Yes
26	Open To Below	9'6" x 12'0"	89 sq. ft	No
27	Attic	32'7" x 9'2"	33 sq. ft	No

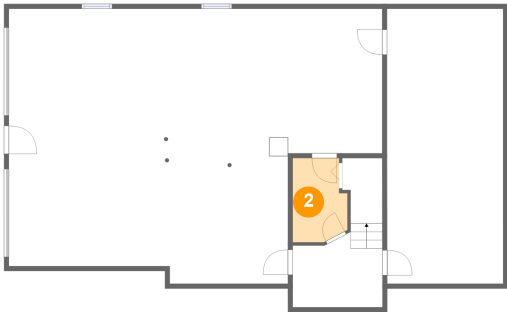
1 Floor 1 - Hall



Max Dimensions: 9'5" x 15'9"
Calculated Area: 98 sq. ft
Included: No

Heated: Yes
Finished: No
Enclosed: Yes
Contiguous: Yes
Permitted: Yes
Wet space: No
Addition: No
Conversion: No

2 Floor 1 - Hall



Max Dimensions: 5'9" x 8'10"
Calculated Area: 46 sq. ft
Included: No

Heated: Yes
Finished: No
Enclosed: Yes
Contiguous: Yes
Permitted: Yes
Wet space: No
Addition: No
Conversion: No

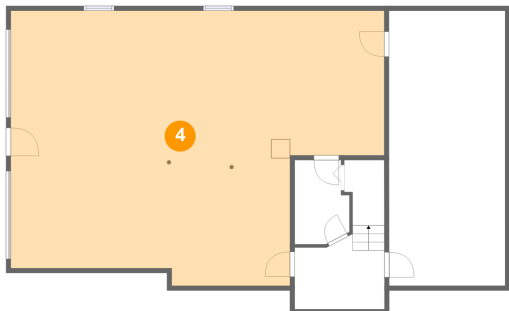
3 Floor 1 - Basement



Max Dimensions: 12'3" x 29'0"
Calculated Area: 356 sq. ft
Included: No

Heated: Yes
Finished: No
Enclosed: Yes
Contiguous: Yes
Permitted: Yes
Wet space: No
Addition: No
Conversion: No

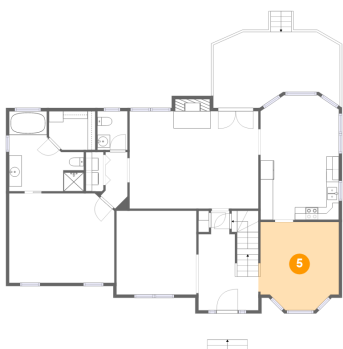
4 Floor 1 - Garage



Max Dimensions: 39'5" x 29'0"
Calculated Area: 976 sq. ft
Included: No

Heated: No
Finished: No
Enclosed: Yes
Contiguous: Yes
Permitted: Yes
Wet space: No
Addition: No
Conversion: No

5 Floor 2 - Dining Area

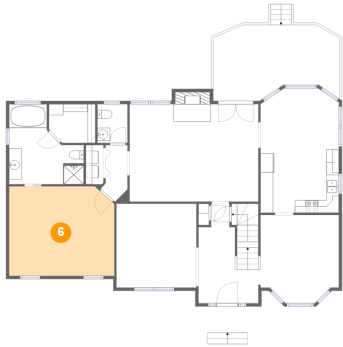


Max Dimensions: 12'9" x 14'0"
Calculated Area: 162 sq. ft
Included: Yes

Heated: Yes
Finished: Yes
Enclosed: Yes
Contiguous: Yes
Permitted: Yes
Wet space: No
Addition: No
Conversion: No

433 Rollingwood Court, Heatherstone, Laymantown, Troutville,
Botetourt County, Virginia, United States, 24175

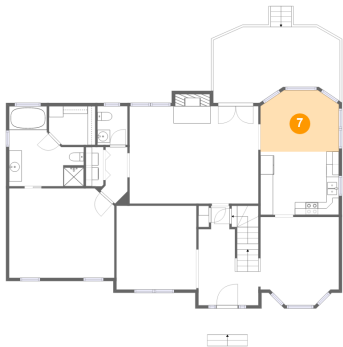
6 Floor 2 - Bedroom



Max Dimensions: 16'8" x 14'2"
Calculated Area: 232 sq. ft
Included: Yes

Heated: Yes
Finished: Yes
Enclosed: Yes
Contiguous: Yes
Permitted: Yes
Wet space: No
Addition: No
Conversion: No

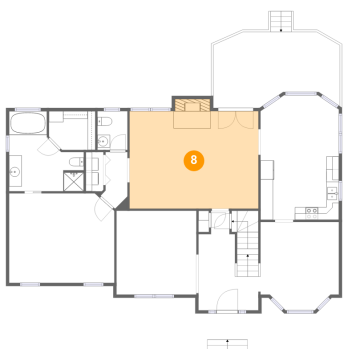
7 Floor 2 - Breakfast Nook



Max Dimensions: 12'5" x 9'9"
Calculated Area: 112 sq. ft
Included: Yes

Heated: Yes
Finished: Yes
Enclosed: Yes
Contiguous: Yes
Permitted: Yes
Wet space: No
Addition: No
Conversion: No

8 Floor 2 - Living Room

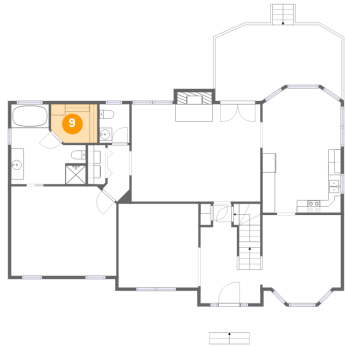


Max Dimensions: 20'5" x 15'5"
Calculated Area: 325 sq. ft
Included: Yes

Heated: Yes
Finished: Yes
Enclosed: Yes
Contiguous: Yes
Permitted: Yes
Wet space: No
Addition: No
Conversion: No

433 Rollingwood Court, Heatherstone, Laymantown, Troutville,
Botetourt County, Virginia, United States, 24175

9 Floor 2 - W.I.C.



Max Dimensions: 7'4" x 6'2"
Calculated Area: 43 sq. ft
Included: Yes

Heated: Yes
Finished: Yes
Enclosed: Yes
Contiguous: Yes
Permitted: Yes
Wet space: No
Addition: No
Conversion: No

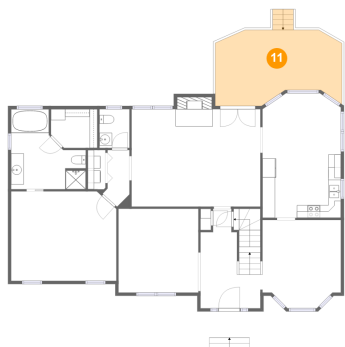
10 Floor 2 - Kitchen



Max Dimensions: 12'5" x 10'0"
Calculated Area: 124 sq. ft
Included: Yes

Heated: Yes
Finished: Yes
Enclosed: Yes
Contiguous: Yes
Permitted: Yes
Wet space: No
Addition: No
Conversion: No

11 Floor 2 - Deck

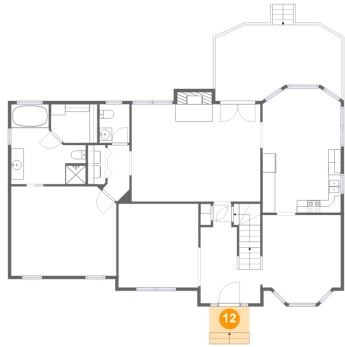


Max Dimensions: 20'1" x 12'0"
Calculated Area: 220 sq. ft
Included: No

Heated: No
Finished: Yes
Enclosed: No
Contiguous: Yes
Permitted: Yes
Wet space: No
Addition: No
Conversion: No

433 Rollingwood Court, Heatherstone, Laymantown, Troutville,
Botetourt County, Virginia, United States, 24175

12 Floor 2 - Porch



Max Dimensions: 6'4" x 4'2"
Calculated Area: 38 sq. ft
Included: No

Heated: No
Finished: Yes
Enclosed: No
Contiguous: Yes
Permitted: Yes
Wet space: No
Addition: No
Conversion: No

13 Floor 2 - Room



Max Dimensions: 12'8" x 13'3"
Calculated Area: 168 sq. ft
Included: Yes

Heated: Yes
Finished: Yes
Enclosed: Yes
Contiguous: Yes
Permitted: Yes
Wet space: No
Addition: No
Conversion: No

14 Floor 2 - WC

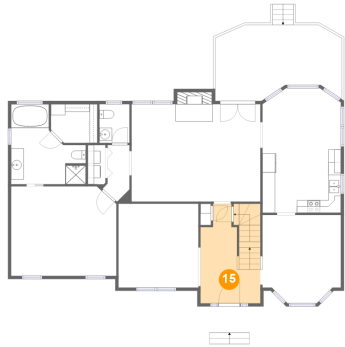


Max Dimensions: 4'9" x 6'2"
Calculated Area: 29 sq. ft
Included: Yes

Heated: Yes
Finished: Yes
Enclosed: Yes
Contiguous: Yes
Permitted: Yes
Wet space: Yes
Addition: No
Conversion: No

433 Rollingwood Court, Heatherstone, Laymantown, Troutville,
Botetourt County, Virginia, United States, 24175

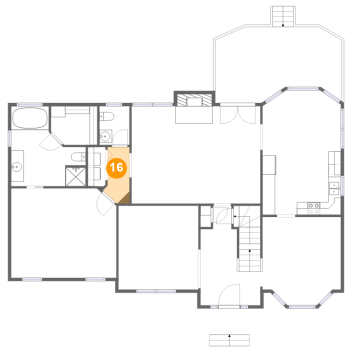
15 Floor 2 - Foyer



Max Dimensions: 9'6" x 15'9"
Calculated Area: 139 sq. ft
Included: Yes

Heated: Yes
Finished: Yes
Enclosed: Yes
Contiguous: Yes
Permitted: Yes
Wet space: No
Addition: No
Conversion: No

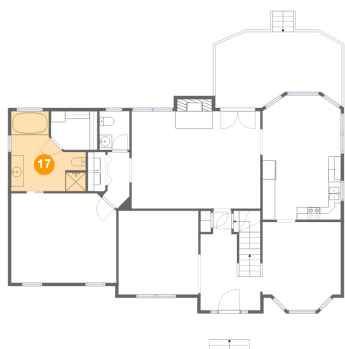
16 Floor 2 - Hall



Max Dimensions: 4'2" x 8'11"
Calculated Area: 31 sq. ft
Included: Yes

Heated: Yes
Finished: Yes
Enclosed: Yes
Contiguous: Yes
Permitted: Yes
Wet space: No
Addition: No
Conversion: No

17 Floor 2 - Bath

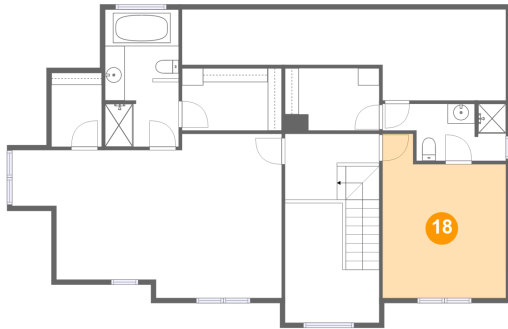


Max Dimensions: 11'10" x 12'8"
Calculated Area: 113 sq. ft
Included: Yes

Heated: Yes
Finished: Yes
Enclosed: Yes
Contiguous: Yes
Permitted: Yes
Wet space: Yes
Addition: No
Conversion: No

433 Rollingwood Court, Heatherstone, Laymantown, Troutville,
Botetourt County, Virginia, United States, 24175

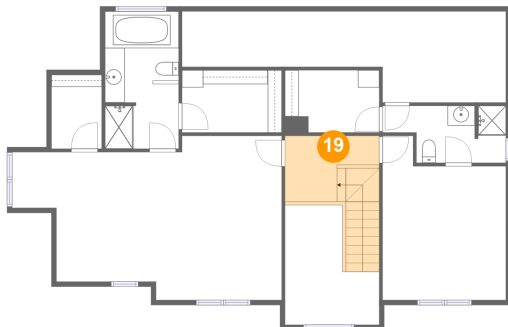
18 Floor 3 - Bedroom



Max Dimensions: 12'5" x 16'6"
Calculated Area: 176 sq. ft
Included: Yes

Heated: Yes
Finished: Yes
Enclosed: Yes
Contiguous: Yes
Permitted: Yes
Wet space: No
Addition: No
Conversion: No

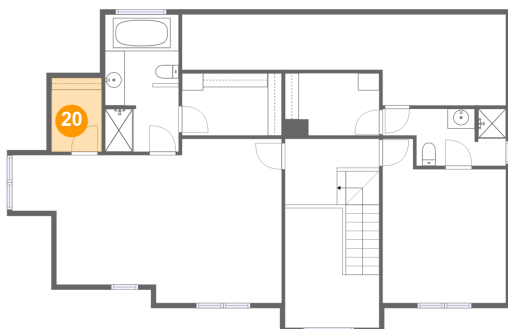
19 Floor 3 - Hall



Max Dimensions: 9'6" x 6'7"
Calculated Area: 91 sq. ft
Included: Yes

Heated: Yes
Finished: Yes
Enclosed: Yes
Contiguous: Yes
Permitted: Yes
Wet space: No
Addition: No
Conversion: No

20 Floor 3 - W.I.C.

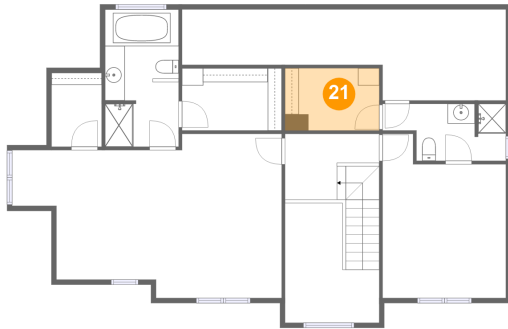


Max Dimensions: 5'1" x 7'5"
Calculated Area: 38 sq. ft
Included: Yes

Heated: Yes
Finished: Yes
Enclosed: Yes
Contiguous: Yes
Permitted: Yes
Wet space: No
Addition: No
Conversion: No

433 Rollingwood Court, Heatherstone, Laymantown, Troutville,
Botetourt County, Virginia, United States, 24175

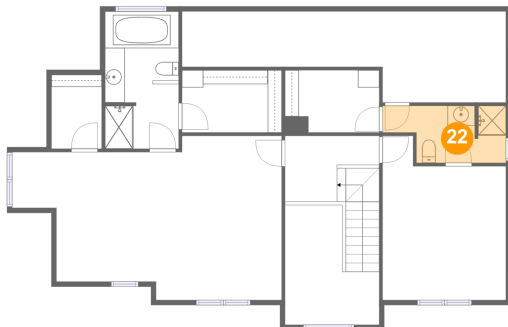
21 Floor 3 - W.I.C.



Max Dimensions: 9'6" x 6'3"
Calculated Area: 59 sq. ft
Included: Yes

Heated: Yes
Finished: Yes
Enclosed: Yes
Contiguous: Yes
Permitted: Yes
Wet space: No
Addition: No
Conversion: No

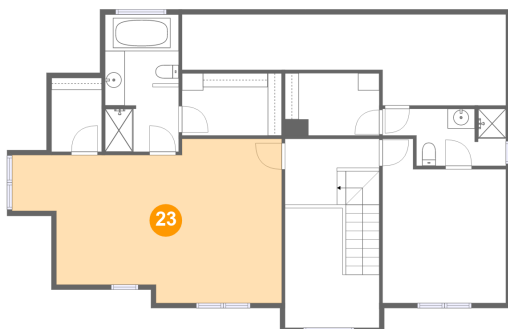
22 Floor 3 - Bath



Max Dimensions: 12'5" x 5'9"
Calculated Area: 60 sq. ft
Included: Yes

Heated: Yes
Finished: Yes
Enclosed: Yes
Contiguous: Yes
Permitted: Yes
Wet space: Yes
Addition: No
Conversion: No

23 Floor 3 - Primary Bedroom

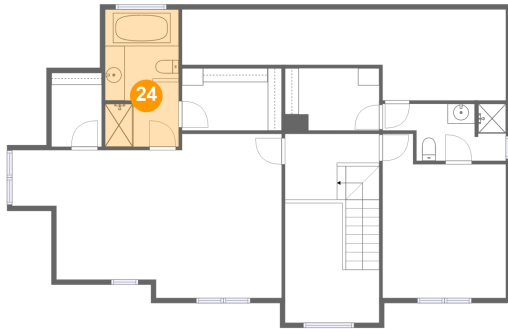


Max Dimensions: 27'2" x 16'6"
Calculated Area: 360 sq. ft
Included: Yes

Heated: Yes
Finished: Yes
Enclosed: Yes
Contiguous: Yes
Permitted: Yes
Wet space: No
Addition: No
Conversion: No

433 Rollingwood Court, Heatherstone, Laymantown, Troutville,
Botetourt County, Virginia, United States, 24175

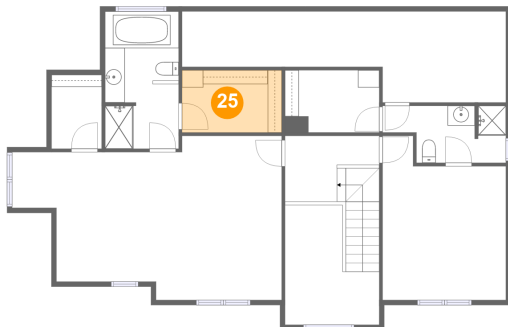
24 Floor 3 - Primary Bath



Max Dimensions: 7'5" x
13'10"
Calculated Area: 101 sq. ft
Included: Yes

Heated: Yes
Finished: Yes
Enclosed: Yes
Contiguous:
Yes
Permitted: Yes
Wet space: Yes
Addition: No
Conversion: No

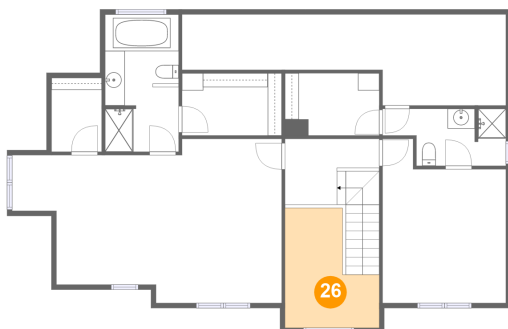
25 Floor 3 - W.I.C.



Max Dimensions: 10'0" x
6'3"
Calculated Area: 63 sq. ft
Included: Yes

Heated: Yes
Finished: Yes
Enclosed: Yes
Contiguous:
Yes
Permitted: Yes
Wet space: No
Addition: No
Conversion: No

26 Floor 3 - Open To Below

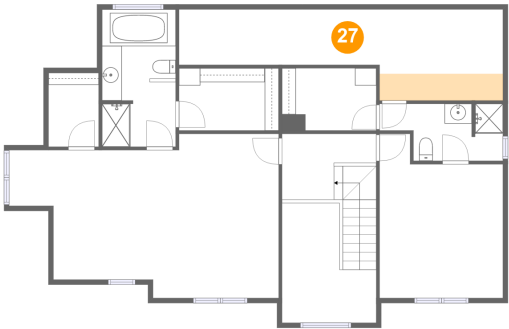


Max Dimensions: 9'6" x
12'0"
Calculated Area: 89 sq. ft
Included: No

Heated: No
Finished: No
Enclosed: No
Contiguous:
Yes
Permitted: No
Wet space: No
Addition: No
Conversion: No

433 Rollingwood Court, Heatherstone, Laymantown, Troutville,
Botetourt County, Virginia, United States, 24175

27 Floor 3 - Attic



Max Dimensions: 32'7" x 9'2"
Calculated Area: 33 sq. ft
Included: No

Heated: No
Finished: No
Enclosed: Yes
Contiguous: Yes
Permitted: Yes
Wet space: No
Addition: No
Conversion: No