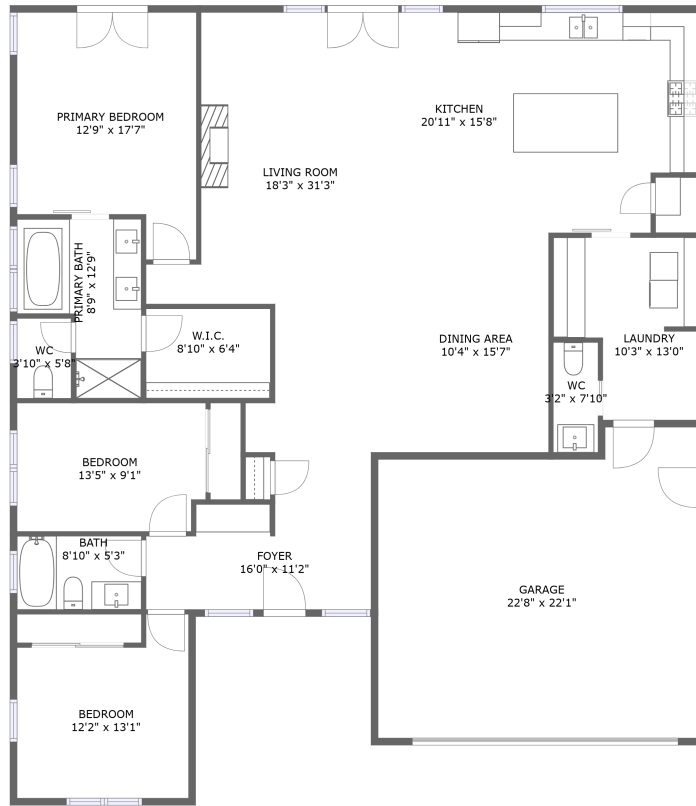



417 Cayucos Avenue, Templeton, San Luis Obispo County, California, United States, 93465



FLOOR 1

Property summary


 **1** Garages

 **3** Bedrooms

 **2** Bathrooms

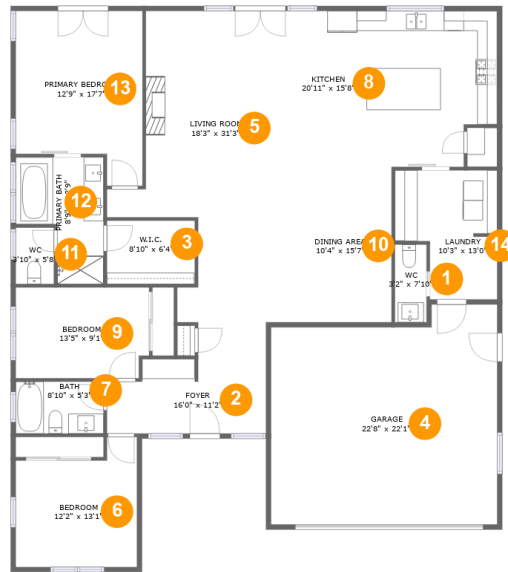
 **1** Half baths

 **1** Floors

 **2,041** Gross living area sqft

 **2,532** Total sqft

417 Cayucos Avenue, Templeton, San Luis Obispo County, California, United States, 93465



Room dimensions

Floor 1

Total sqft: 2532 Living area: 2041

#		Dimensions	sqft	Counted as living area
1	WC	3'2" x 7'10"	25 sq. ft	Yes
2	Foyer	16'0" x 11'2"	136 sq. ft	Yes
3	W.I.C.	8'10" x 6'4"	56 sq. ft	Yes
4	Garage	22'8" x 22'1"	464 sq. ft	No
5	Living Room	18'3" x 31'3"	410 sq. ft	Yes
6	Bedroom	12'2" x 13'1"	137 sq. ft	Yes
7	Bath	8'10" x 5'3"	46 sq. ft	Yes
8	Kitchen	20'11" x 15'8"	313 sq. ft	Yes
9	Bedroom	13'5" x 9'1"	120 sq. ft	Yes
10	Dining Area	10'4" x 15'7"	161 sq. ft	Yes
11	WC	3'10" x 5'8"	22 sq. ft	Yes

**417 Cayucos Avenue, Templeton, San Luis Obispo
County, California, United States, 93465**

#		Dimensions	sqft	Counted as living area
12	Primary Bath	8'9" x 12'9"	87 sq. ft	Yes
13	Primary Bedroom	12'9" x 17'7"	194 sq. ft	Yes
14	Laundry	10'3" x 13'0"	112 sq. ft	Yes

417 Cayucos Avenue, Templeton, San Luis Obispo County, California, United States, 93465

1 Floor 1 - WC



Dimensions: 3'2" x 7'10"
Area: 25 sq. ft
Counted as living area: Yes

Heated: Yes
Finished: Yes
Enclosed: Yes
Contiguous: Yes
Permitted: Yes
Wet space: Yes
Addition: No
Conversion: No

2 Floor 1 - Foyer



Dimensions: 16'0" x 11'2"
Area: 136 sq. ft
Counted as living area: Yes

Heated: Yes
Finished: Yes
Enclosed: Yes
Contiguous: Yes
Permitted: Yes
Wet space: No
Addition: No
Conversion: No

417 Cayucos Avenue, Templeton, San Luis Obispo County, California, United States, 93465

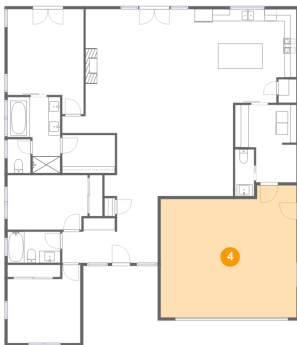
3 Floor 1 - W.I.C.



Dimensions: 8'10" x 6'4"
Area: 56 sq. ft
Counted as living area: Yes

Heated: Yes
Finished: Yes
Enclosed: Yes
Contiguous: Yes
Permitted: Yes
Wet space: No
Addition: No
Conversion: No

4 Floor 1 - Garage



Dimensions: 22'8" x 22'1"
Area: 464 sq. ft
Counted as living area: No

Heated: No
Finished: No
Enclosed: Yes
Contiguous: Yes
Permitted: Yes
Wet space: No
Addition: No
Conversion: No

5 Floor 1 - Living Room

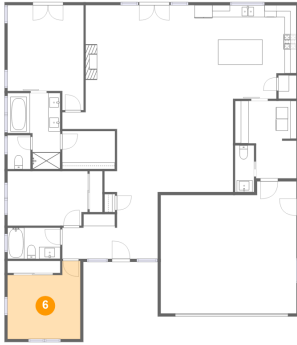


Dimensions: 18'3" x 31'3"
Area: 410 sq. ft
Counted as living area: Yes

Heated: Yes
Finished: Yes
Enclosed: Yes
Contiguous: Yes
Permitted: Yes
Wet space: No
Addition: No
Conversion: No

417 Cayucos Avenue, Templeton, San Luis Obispo County, California, United States, 93465

6 Floor 1 - Bedroom



Dimensions: 12'2" x 13'1"
Area: 137 sq. ft
Counted as living area: Yes

Heated: Yes
Finished: Yes
Enclosed: Yes
Contiguous: Yes
Permitted: Yes
Wet space: No
Addition: No
Conversion: No

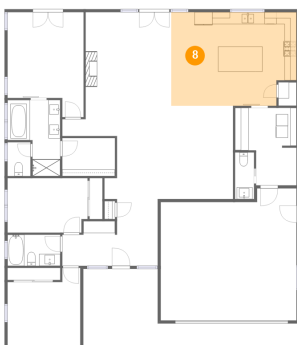
7 Floor 1 - Bath



Dimensions: 8'10" x 5'3"
Area: 46 sq. ft
Counted as living area: Yes

Heated: Yes
Finished: Yes
Enclosed: Yes
Contiguous: Yes
Permitted: Yes
Wet space: Yes
Addition: No
Conversion: No

8 Floor 1 - Kitchen

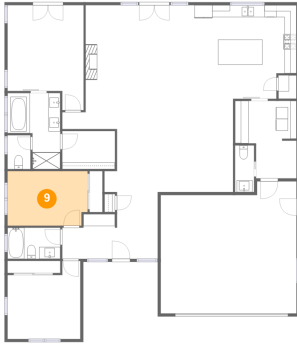


Dimensions: 20'11" x 15'8"
Area: 313 sq. ft
Counted as living area: Yes

Heated: Yes
Finished: Yes
Enclosed: Yes
Contiguous: Yes
Permitted: Yes
Wet space: No
Addition: No
Conversion: No

417 Cayucos Avenue, Templeton, San Luis Obispo County, California, United States, 93465

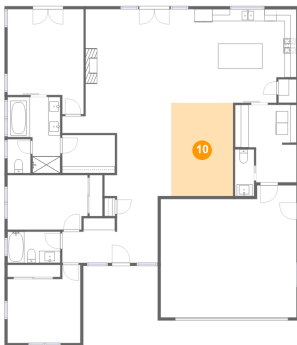
9 Floor 1 - Bedroom



Dimensions: 13'5" x 9'1"
Area: 120 sq. ft
Counted as living area: Yes

Heated: Yes
Finished: Yes
Enclosed: Yes
Contiguous: Yes
Permitted: Yes
Wet space: No
Addition: No
Conversion: No

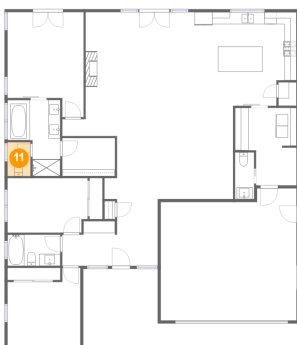
10 Floor 1 - Dining Area



Dimensions: 10'4" x 15'7"
Area: 161 sq. ft
Counted as living area: Yes

Heated: Yes
Finished: Yes
Enclosed: Yes
Contiguous: Yes
Permitted: Yes
Wet space: No
Addition: No
Conversion: No

11 Floor 1 - WC



Dimensions: 3'10" x 5'8"
Area: 22 sq. ft
Counted as living area: Yes

Heated: Yes
Finished: Yes
Enclosed: Yes
Contiguous: Yes
Permitted: Yes
Wet space: Yes
Addition: No
Conversion: No

417 Cayucos Avenue, Templeton, San Luis Obispo County, California, United States, 93465

12 Floor 1 - Primary Bath



Dimensions: 8'9" x 12'9"
Area: 87 sq. ft
Counted as living area: Yes

Heated: Yes
Finished: Yes
Enclosed: Yes
Contiguous: Yes
Permitted: Yes
Wet space: Yes
Addition: No
Conversion: No

13 Floor 1 - Primary Bedroom



Dimensions: 12'9" x 17'7"
Area: 194 sq. ft
Counted as living area: Yes

Heated: Yes
Finished: Yes
Enclosed: Yes
Contiguous: Yes
Permitted: Yes
Wet space: No
Addition: No
Conversion: No

14 Floor 1 - Laundry



Dimensions: 10'3" x 13'0"
Area: 112 sq. ft
Counted as living area: Yes

Heated: Yes
Finished: Yes
Enclosed: Yes
Contiguous: Yes
Permitted: Yes
Wet space: No
Addition: No
Conversion: No