

Home report

31 Henderson Road, Gilford, Belknap County, New Hampshire,
United States, 03249



Total Area: 4809 sq. ft
Below Ground: 1378 sq. ft, Floor 2: 1957 sq. ft, Floor 3: 1474 sq. ft
Excluded: Screened porch 243 sq. ft, Open to below 341 sq. ft, Low ceiling 67 sq. ft,
Embedded window 7 sq. ft, Walls: 338 sq. ft

Property summary



3
Floors



4
Bedrooms



3
Bathrooms

Home report

**31 Henderson Road, Gilford, Belknap County, New Hampshire,
United States, 03249**



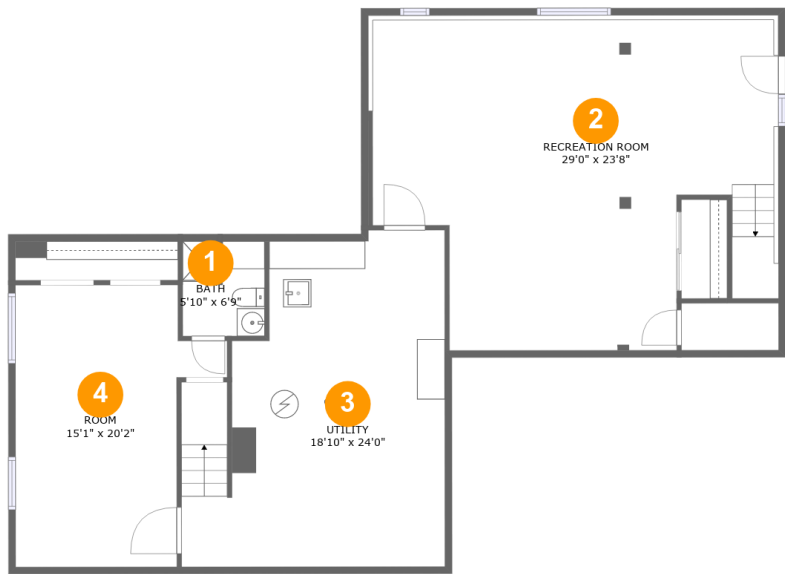
1
Half baths



1
Garages

Home report

31 Henderson Road, Gilford, Belknap County, New Hampshire,
United States, 03249



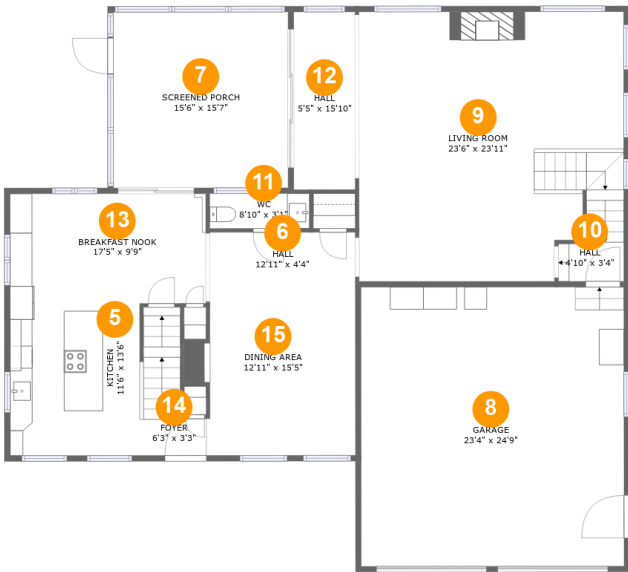
Room dimensions

Floor 1 Below ground Total:1378sqft Excluded: 0sqft

#		Max Dimensions	sqft	Included
1	Bath	5'10" x 6'9"	39 sq. ft	Yes
2	Recreation Room	29'0" x 23'8"	596 sq. ft	Yes
3	Utility	18'10" x 24'0"	373 sq. ft	Yes
4	Room	15'1" x 20'2"	243 sq. ft	Yes

Home report

31 Henderson Road, Gilford, Belknap County, New Hampshire,
United States, 03249



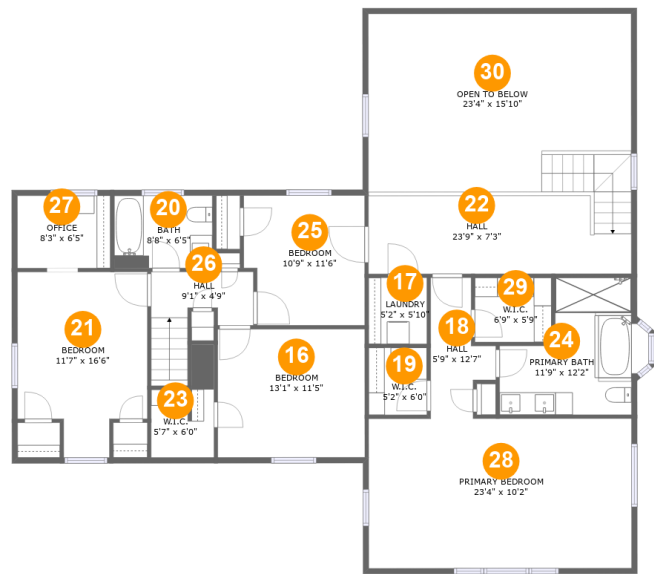
Room dimensions

Floor 2 Total:1957sqft Excluded: 243sqft

#		Max Dimensions	sqft	Included
5	Kitchen	11'6" x 13'6"	156 sq. ft	Yes
6	Hall	12'11" x 4'4"	57 sq. ft	Yes
7	Screened Porch	15'6" x 15'7"	243 sq. ft	No
8	Garage	23'4" x 24'9"	581 sq. ft	Yes
9	Living Room	23'6" x 23'11"	541 sq. ft	Yes
10	Hall	4'10" x 3'4"	20 sq. ft	Yes
11	WC	8'10" x 3'1"	28 sq. ft	Yes
12	Hall	5'5" x 15'10"	87 sq. ft	Yes
13	Breakfast Nook	17'5" x 9'9"	171 sq. ft	Yes
14	Foyer	6'3" x 3'3"	55 sq. ft	Yes
15	Dining Area	12'11" x 15'5"	208 sq. ft	Yes

Home report

31 Henderson Road, Gilford, Belknap County, New Hampshire,
United States, 03249



Room dimensions

Floor 3 Total:1474sqft Excluded: 415sqft

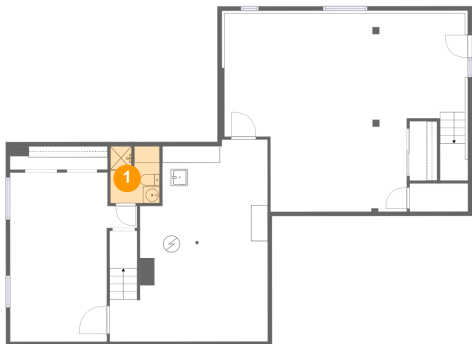
#		Max Dimensions	sqft	Included
16	Bedroom	13'1" x 11'5"	133 sq. ft	Yes
17	Laundry	5'2" x 5'10"	31 sq. ft	Yes
18	Hall	5'9" x 12'7"	53 sq. ft	Yes
19	W.I.C.	5'2" x 6'0"	31 sq. ft	Yes
20	Bath	8'8" x 6'5"	56 sq. ft	Yes
21	Bedroom	11'7" x 16'6"	165 sq. ft	Yes
22	Hall	23'9" x 7'3"	202 sq. ft	Yes
23	W.I.C.	5'7" x 6'0"	32 sq. ft	Yes
24	Primary Bath	11'9" x 12'2"	113 sq. ft	Yes
25	Bedroom	10'9" x 11'6"	118 sq. ft	Yes
26	Hall	9'1" x 4'9"	57 sq. ft	Yes

Home report

**31 Henderson Road, Gilford, Belknap County, New Hampshire,
United States, 03249**

#		Max Dimensions	sqft	Included
27	Office	8'3" x 6'5"	54 sq. ft	Yes
28	Primary Bedroom	23'4" x 10'2"	272 sq. ft	Yes
29	W.I.C.	6'9" x 5'9"	39 sq. ft	Yes
30	Open To Below	23'4" x 15'10"	341 sq. ft	No

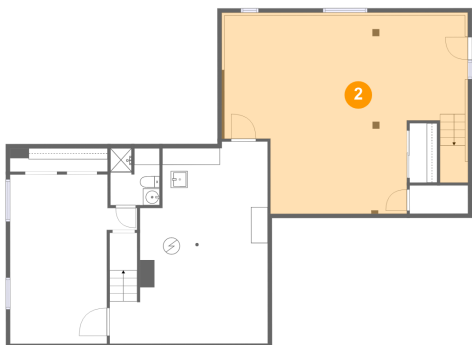
1 Floor 1 - Bath



Max Dimensions: 5'10" x 6'9"
Calculated Area: 39 sq. ft
Included: Yes

Heated: Yes
Finished: Yes
Enclosed: Yes
Contiguous: Yes
Permitted: Yes
Wet space: Yes
Addition: No
Conversion: No

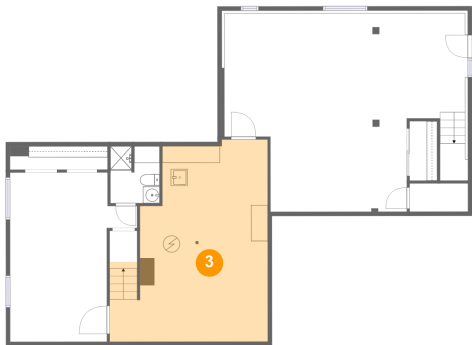
2 Floor 1 - Recreation Room



Max Dimensions: 29'0" x 23'8"
Calculated Area: 596 sq. ft
Included: Yes

Heated: Yes
Finished: Yes
Enclosed: Yes
Contiguous: Yes
Permitted: Yes
Wet space: No
Addition: No
Conversion: No

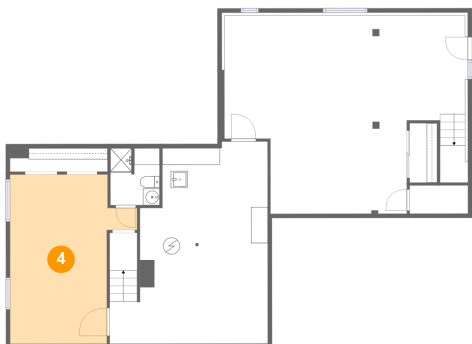
3 Floor 1 - Utility



Max Dimensions: 18'10" x 24'0"
Calculated Area: 373 sq. ft
Included: Yes

Heated: Yes
Finished: Yes
Enclosed: Yes
Contiguous: Yes
Permitted: Yes
Wet space: No
Addition: No
Conversion: No

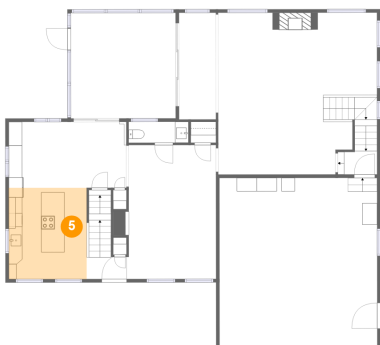
4 Floor 1 - Room



Max Dimensions: 15'1" x 20'2"
Calculated Area: 243 sq. ft
Included: Yes

Heated: Yes
Finished: Yes
Enclosed: Yes
Contiguous: Yes
Permitted: Yes
Wet space: No
Addition: No
Conversion: No

5 Floor 2 - Kitchen



Max Dimensions: 11'6" x 13'6"
Calculated Area: 156 sq. ft
Included: Yes

Heated: Yes
Finished: Yes
Enclosed: Yes
Contiguous: Yes
Permitted: Yes
Wet space: No
Addition: No
Conversion: No

31 Henderson Road, Gilford, Belknap County, New Hampshire,
United States, 03249

6 Floor 2 - Hall



Max Dimensions: 12'11" x 4'4"
Calculated Area: 57 sq. ft
Included: Yes

Heated: Yes
Finished: Yes
Enclosed: Yes
Contiguous: Yes
Permitted: Yes
Wet space: No
Addition: No
Conversion: No

7 Floor 2 - Screened Porch



Max Dimensions: 15'6" x 15'7"
Calculated Area: 243 sq. ft
Included: No

Heated: No
Finished: Yes
Enclosed: No
Contiguous: Yes
Permitted: Yes
Wet space: No
Addition: No
Conversion: No

8 Floor 2 - Garage

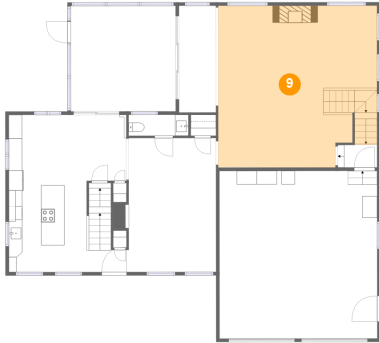


Max Dimensions: 23'4" x 24'9"
Calculated Area: 581 sq. ft
Included: No

Heated: No
Finished: Yes
Enclosed: Yes
Contiguous: Yes
Permitted: Yes
Wet space: No
Addition: No
Conversion: No

31 Henderson Road, Gilford, Belknap County, New Hampshire,
United States, 03249

9 Floor 2 - Living Room



Max Dimensions: 23'6" x 23'11"
Calculated Area: 541 sq. ft
Included: Yes

Heated: Yes
Finished: Yes
Enclosed: Yes
Contiguous: Yes
Permitted: Yes
Wet space: No
Addition: No
Conversion: No

10 Floor 2 - Hall



Max Dimensions: 4'10" x 3'4"
Calculated Area: 20 sq. ft
Included: Yes

Heated: Yes
Finished: Yes
Enclosed: Yes
Contiguous: Yes
Permitted: Yes
Wet space: No
Addition: No
Conversion: No

11 Floor 2 - WC



Max Dimensions: 8'10" x 3'1"
Calculated Area: 28 sq. ft
Included: Yes

Heated: Yes
Finished: Yes
Enclosed: Yes
Contiguous: Yes
Permitted: Yes
Wet space: Yes
Addition: No
Conversion: No

31 Henderson Road, Gilford, Belknap County, New Hampshire,
United States, 03249

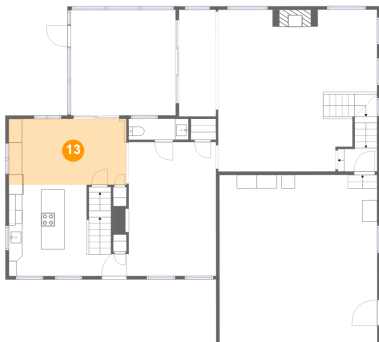
12 Floor 2 - Hall



Max Dimensions: 5'5" x 15'10"
Calculated Area: 87 sq. ft
Included: Yes

Heated: Yes
Finished: Yes
Enclosed: Yes
Contiguous: Yes
Permitted: Yes
Wet space: No
Addition: No
Conversion: No

13 Floor 2 - Breakfast Nook



Max Dimensions: 17'5" x 9'9"
Calculated Area: 171 sq. ft
Included: Yes

Heated: Yes
Finished: Yes
Enclosed: Yes
Contiguous: Yes
Permitted: Yes
Wet space: No
Addition: No
Conversion: No

14 Floor 2 - Foyer



Max Dimensions: 6'3" x 3'3"
Calculated Area: 55 sq. ft
Included: Yes

Heated: Yes
Finished: Yes
Enclosed: Yes
Contiguous: Yes
Permitted: Yes
Wet space: No
Addition: No
Conversion: No

31 Henderson Road, Gilford, Belknap County, New Hampshire,
United States, 03249

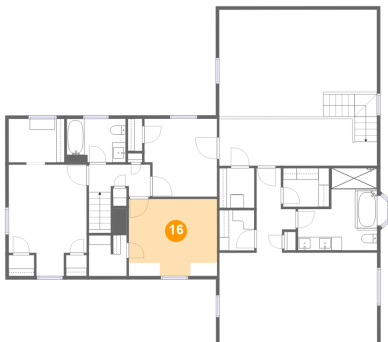
15 Floor 2 - Dining Area



Max Dimensions: 12'11" x 15'5"
Calculated Area: 208 sq. ft
Included: Yes

Heated: Yes
Finished: Yes
Enclosed: Yes
Contiguous: Yes
Permitted: Yes
Wet space: No
Addition: No
Conversion: No

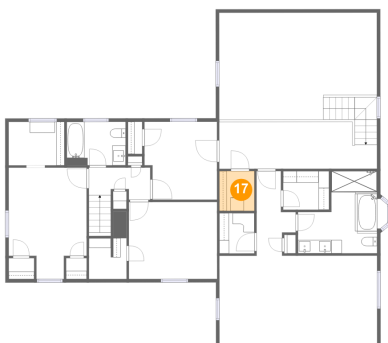
16 Floor 3 - Bedroom



Max Dimensions: 13'1" x 11'5"
Calculated Area: 133 sq. ft
Included: Yes

Heated: Yes
Finished: Yes
Enclosed: Yes
Contiguous: Yes
Permitted: Yes
Wet space: No
Addition: No
Conversion: No

17 Floor 3 - Laundry



Max Dimensions: 5'2" x 5'10"
Calculated Area: 31 sq. ft
Included: Yes

Heated: Yes
Finished: Yes
Enclosed: Yes
Contiguous: Yes
Permitted: Yes
Wet space: No
Addition: No
Conversion: No

31 Henderson Road, Gilford, Belknap County, New Hampshire,
United States, 03249

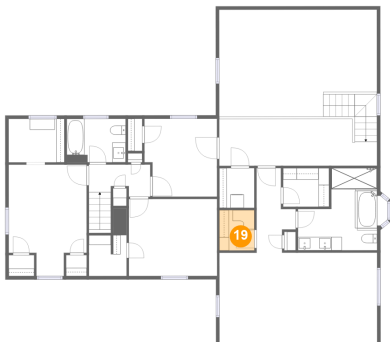
18 Floor 3 - Hall



Max Dimensions: 5'9" x 12'7"
Calculated Area: 53 sq. ft
Included: Yes

Heated: Yes
Finished: Yes
Enclosed: Yes
Contiguous: Yes
Permitted: Yes
Wet space: No
Addition: No
Conversion: No

19 Floor 3 - W.I.C.



Max Dimensions: 5'2" x 6'0"
Calculated Area: 31 sq. ft
Included: Yes

Heated: Yes
Finished: Yes
Enclosed: Yes
Contiguous: Yes
Permitted: Yes
Wet space: No
Addition: No
Conversion: No

20 Floor 3 - Bath



Max Dimensions: 8'8" x 6'5"
Calculated Area: 56 sq. ft
Included: Yes

Heated: Yes
Finished: Yes
Enclosed: Yes
Contiguous: Yes
Permitted: Yes
Wet space: Yes
Addition: No
Conversion: No

31 Henderson Road, Gilford, Belknap County, New Hampshire,
United States, 03249

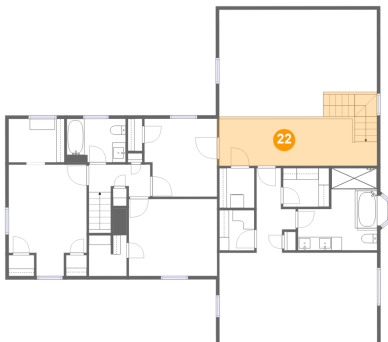
21 Floor 3 - Bedroom



Max Dimensions: 11'7" x 16'6"
Calculated Area: 165 sq. ft
Included: Yes

Heated: Yes
Finished: Yes
Enclosed: Yes
Contiguous: Yes
Permitted: Yes
Wet space: No
Addition: No
Conversion: No

22 Floor 3 - Hall



Max Dimensions: 23'9" x 7'3"
Calculated Area: 202 sq. ft
Included: Yes

Heated: Yes
Finished: Yes
Enclosed: Yes
Contiguous: Yes
Permitted: Yes
Wet space: No
Addition: No
Conversion: No

23 Floor 3 - W.I.C.

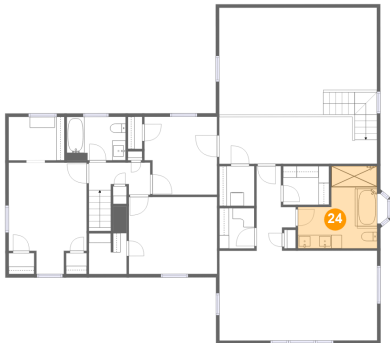


Max Dimensions: 5'7" x 6'0"
Calculated Area: 32 sq. ft
Included: Yes

Heated: Yes
Finished: Yes
Enclosed: Yes
Contiguous: Yes
Permitted: Yes
Wet space: No
Addition: No
Conversion: No

31 Henderson Road, Gilford, Belknap County, New Hampshire,
United States, 03249

24 Floor 3 - Primary Bath



Max Dimensions: 11'9" x 12'2"
Calculated Area: 113 sq. ft
Included: Yes

Heated: Yes
Finished: Yes
Enclosed: Yes
Contiguous: Yes
Permitted: Yes
Wet space: Yes
Addition: No
Conversion: No

25 Floor 3 - Bedroom



Max Dimensions: 10'9" x 11'6"
Calculated Area: 118 sq. ft
Included: Yes

Heated: Yes
Finished: Yes
Enclosed: Yes
Contiguous: Yes
Permitted: Yes
Wet space: No
Addition: No
Conversion: No

26 Floor 3 - Hall



Max Dimensions: 9'1" x 4'9"
Calculated Area: 57 sq. ft
Included: Yes

Heated: Yes
Finished: Yes
Enclosed: Yes
Contiguous: Yes
Permitted: Yes
Wet space: No
Addition: No
Conversion: No

31 Henderson Road, Gilford, Belknap County, New Hampshire,
United States, 03249

27 Floor 3 - Office



Max Dimensions: 8'3" x 6'5"
Calculated Area: 54 sq. ft
Included: Yes

Heated: Yes
Finished: Yes
Enclosed: Yes
Contiguous: Yes
Permitted: Yes
Wet space: No
Addition: No
Conversion: No

28 Floor 3 - Primary Bedroom



Max Dimensions: 23'4" x 10'2"
Calculated Area: 272 sq. ft
Included: Yes

Heated: Yes
Finished: Yes
Enclosed: Yes
Contiguous: Yes
Permitted: Yes
Wet space: No
Addition: No
Conversion: No

29 Floor 3 - W.I.C.



Max Dimensions: 6'9" x 5'9"
Calculated Area: 39 sq. ft
Included: Yes

Heated: Yes
Finished: Yes
Enclosed: Yes
Contiguous: Yes
Permitted: Yes
Wet space: No
Addition: No
Conversion: No

31 Henderson Road, Gilford, Belknap County, New Hampshire,
United States, 03249

30 Floor 3 - Open To Below



Max Dimensions: 23'4" x
15'10"
Calculated Area: 341 sq. ft
Included: No

Heated: No
Finished: No
Enclosed: No
Contiguous:
Yes
Permitted: No
Wet space: No
Addition: No
Conversion: No