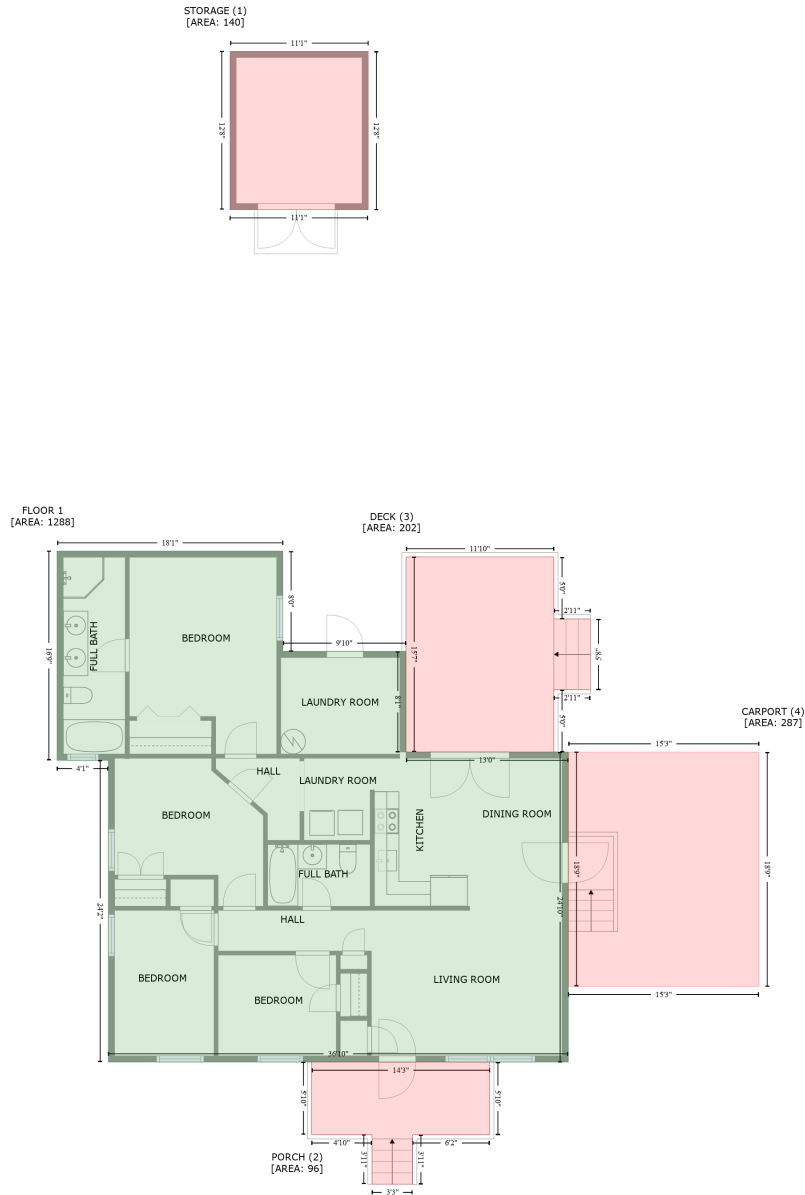


106 Jupiter Drive, Grove Park, Dunn, Harnett County, North Carolina, United States, 28334

Gross Living Area: 1288 sq. ft



Space	Area (sq. ft)	Calculation
FLOOR 1 (Living area)	1288	Coordinate Polygon Area Algorithm using inches $-((236.6 + 236.6) * (520.9 - 617.3) + (236.6 + 354.9) * (617.3 - 617.3) + (354.9 + 354.9) * (617.3 - 714) + (354.9 + 510.9) * (714 - 714) + (510.9 + 510.9) * (714 - 1011.9) + (510.9 + 68.8) * (1011.9 - 1011.9) + (68.8 + 68.8) * (1011.9 - 722) + (68.8 + 19.5) * (722 - 722) + (19.5 + 19.5) * (722 - 520.9) + (19.5 + 236.6) * (520.9 - 520.9)) * 0.5 * 0.00694$
STORAGE (Non-living area)	140	$-((318.6 + 318.6) * (40.8 - 193) + (318.6 + 185.7) * (193 - 193) + (185.7 + 185.7) * (193 - 40.8) + (185.7 + 318.6) * (40.8 - 40.8)) * 0.5 * 0.00694$

106 Jupiter Drive, Grove Park, Dunn, Harnett County, North Carolina, United States, 28334

Gross Living Area: 1288 sq. ft

Space	Area (sq. ft)	Calculation <small>Coordinate Polygon Area Algorithm using inches</small>
PORCH (Non-living area)	96	$-\left((435.4 + 435.4) * (1011.9 - 1081.8) + (435.4 + 361.4) * (1081.8 - 1081.8) + (361.4 + 361.4) * (1081.8 - 1129.3) + (361.4 + 322.2) * (1129.3 - 1129.3) + (322.2 + 322.2) * (1129.3 - 1081.8) + (322.2 + 264.2) * (1081.8 - 1081.8) + (264.2 + 264.2) * (1081.8 - 1011.9) + (264.2 + 435.4) * (1011.9 - 1011.9)\right) * 0.5 * 0.00694$
DECK (Non-living area)	202	$-\left((497 + 497) * (526.6 - 586.1) + (497 + 532.1) * (586.1 - 586.1) + (532.1 + 532) * (586.1 - 654.2) + (532 + 497) * (654.2 - 654.2) + (497 + 497) * (654.2 - 714) + (497 + 354.9) * (714 - 714) + (354.9 + 354.9) * (714 - 526.6) + (354.9 + 497) * (526.6 - 526.6)\right) * 0.5 * 0.00694$
CARPORT (Non-living area)	287	$-\left((694.3 + 694.3) * (714 - 939.1) + (694.3 + 510.9) * (939.1 - 939.1) + (510.9 + 510.9) * (939.1 - 714) + (510.9 + 694.3) * (714 - 714)\right) * 0.5 * 0.00694$