


12425 Southeast Harold Street, Powellhurst-Gilbert, Portland, Multnomah County, Oregon, United States,



Property summary


 **1** Garages

 **4** Bedrooms

 **1** Bathrooms

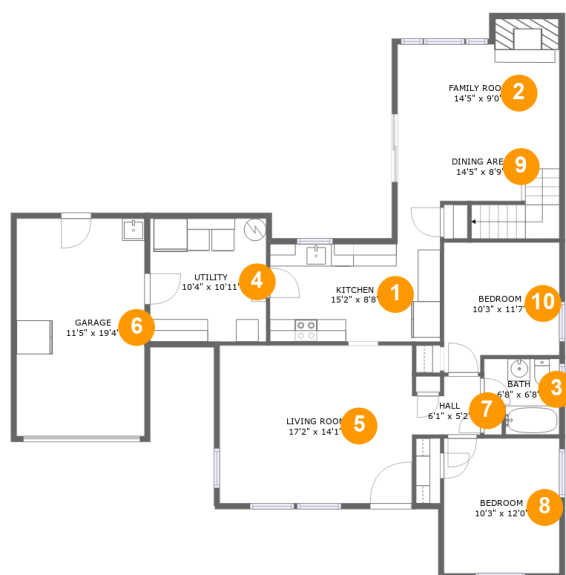
 **1** Half baths

 **2** Floors

 **1,638** Gross living area sqft

 **1,899** Total sqft

12425 Southeast Harold Street, Powellhurst-Gilbert, Portland, Multnomah County, Oregon, United States,



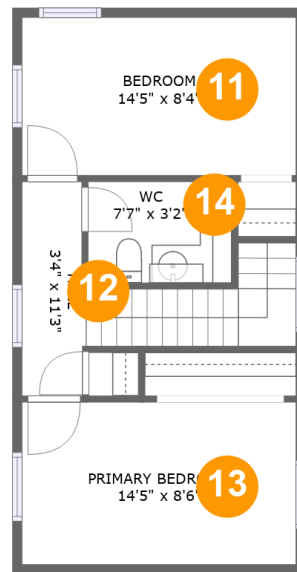
Room dimensions

Floor 1

Total sqft: 1441 Living area: 1180

#		Dimensions	sqft	Counted as living area
1	Kitchen	15'2" x 8'8"	132 sq. ft	Yes
2	Family Room	14'5" x 9'0"	143 sq. ft	Yes
3	Bath	6'8" x 6'8"	40 sq. ft	Yes
4	Utility	10'4" x 10'11"	113 sq. ft	Yes
5	Living Room	17'2" x 14'1"	241 sq. ft	Yes
6	Garage	11'5" x 19'4"	220 sq. ft	No
7	Hall	6'1" x 5'2"	27 sq. ft	Yes
8	Bedroom	10'3" x 12'0"	123 sq. ft	Yes
9	Dining Area	14'5" x 8'9"	110 sq. ft	Yes
10	Bedroom	10'3" x 11'7"	108 sq. ft	Yes

**12425 Southeast Harold Street, Powellhurst-Gilbert,
Portland, Multnomah County, Oregon, United States,**



Room dimensions

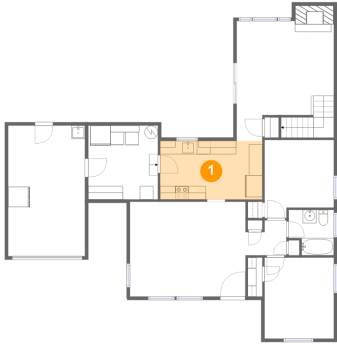
Floor 2

Total sqft: 458 Living area: 458

#		Dimensions	sqft	Counted as living area
11	Bedroom	14'5" x 8'4"	119 sq. ft	Yes
12	Hall	3'4" x 11'3"	77 sq. ft	Yes
13	Primary Bedroom	14'5" x 8'6"	123 sq. ft	Yes
14	WC	7'7" x 3'2"	40 sq. ft	Yes

12425 Southeast Harold Street, Powellhurst-Gilbert, Portland, Multnomah County, Oregon, United States,

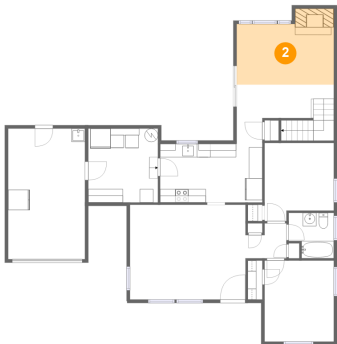
1 Floor 1 - Kitchen



Dimensions: 15'2" x 8'8"
Area: 132 sq. ft
Counted as living area: Yes

Heated: Yes
Finished: Yes
Enclosed: Yes
Contiguous: Yes
Permitted: Yes
Wet space: No
Addition: No
Conversion: No

2 Floor 1 - Family Room

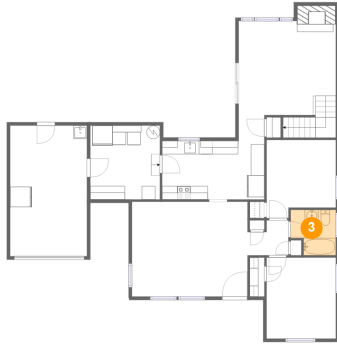


Dimensions: 14'5" x 9'0"
Area: 143 sq. ft
Counted as living area: Yes

Heated: Yes
Finished: Yes
Enclosed: Yes
Contiguous: Yes
Permitted: Yes
Wet space: No
Addition: No
Conversion: No

12425 Southeast Harold Street, Powellhurst-Gilbert, Portland, Multnomah County, Oregon, United States,

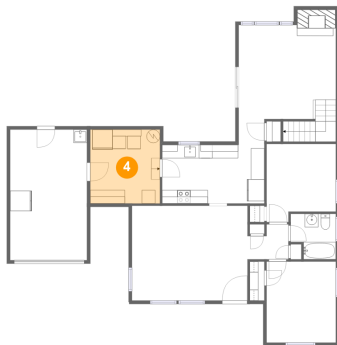
3 Floor 1 - Bath



Dimensions: 6'8" x 6'8"
Area: 40 sq. ft
Counted as living area: Yes

Heated: Yes
Finished: Yes
Enclosed: Yes
Contiguous: Yes
Permitted: Yes
Wet space: Yes
Addition: No
Conversion: No

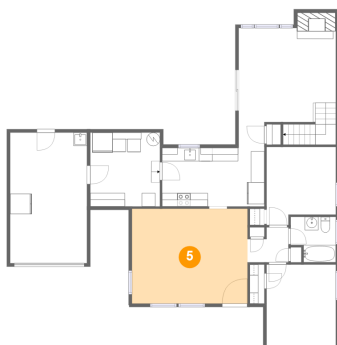
4 Floor 1 - Utility



Dimensions: 10'4" x 10'11"
Area: 113 sq. ft
Counted as living area: Yes

Heated: Yes
Finished: Yes
Enclosed: Yes
Contiguous: Yes
Permitted: Yes
Wet space: No
Addition: No
Conversion: No

5 Floor 1 - Living Room

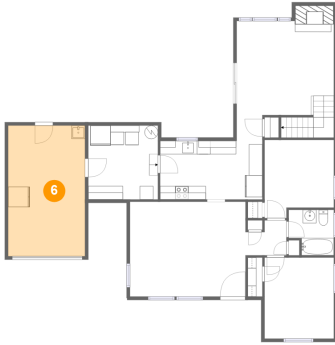


Dimensions: 17'2" x 14'1"
Area: 241 sq. ft
Counted as living area: Yes

Heated: Yes
Finished: Yes
Enclosed: Yes
Contiguous: Yes
Permitted: Yes
Wet space: No
Addition: No
Conversion: No

12425 Southeast Harold Street, Powellhurst-Gilbert, Portland, Multnomah County, Oregon, United States,

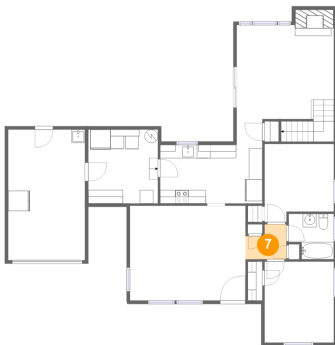
6 Floor 1 - Garage



Dimensions: 11'5" x 19'4"
Area: 220 sq. ft
Counted as living area: No

Heated: No
Finished: No
Enclosed: Yes
Contiguous: Yes
Permitted: Yes
Wet space: No
Addition: No
Conversion: No

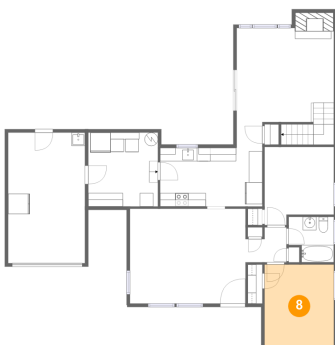
7 Floor 1 - Hall



Dimensions: 6'1" x 5'2"
Area: 27 sq. ft
Counted as living area: Yes

Heated: Yes
Finished: Yes
Enclosed: Yes
Contiguous: Yes
Permitted: Yes
Wet space: No
Addition: No
Conversion: No

8 Floor 1 - Bedroom

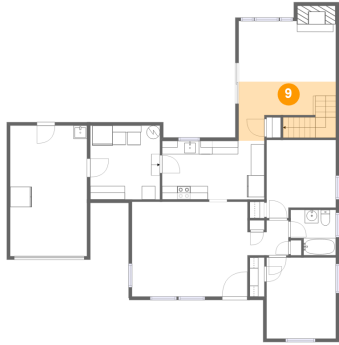


Dimensions: 10'3" x 12'0"
Area: 123 sq. ft
Counted as living area: Yes

Heated: Yes
Finished: Yes
Enclosed: Yes
Contiguous: Yes
Permitted: Yes
Wet space: No
Addition: No
Conversion: No

12425 Southeast Harold Street, Powellhurst-Gilbert, Portland, Multnomah County, Oregon, United States,

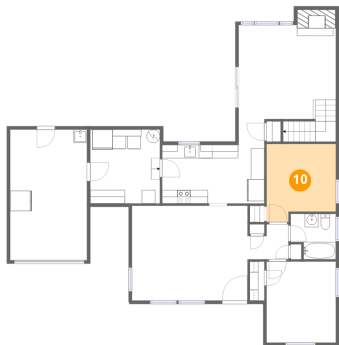
9 Floor 1 - Dining Area



Dimensions: 14'5" x 8'9"
Area: 110 sq. ft
Counted as living area: Yes

Heated: Yes
Finished: Yes
Enclosed: Yes
Contiguous: Yes
Permitted: Yes
Wet space: No
Addition: No
Conversion: No

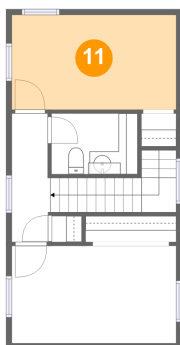
10 Floor 1 - Bedroom



Dimensions: 10'3" x 11'7"
Area: 108 sq. ft
Counted as living area: Yes

Heated: Yes
Finished: Yes
Enclosed: Yes
Contiguous: Yes
Permitted: Yes
Wet space: No
Addition: No
Conversion: No

11 Floor 2 - Bedroom

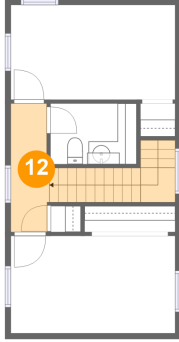


Dimensions: 14'5" x 8'4"
Area: 119 sq. ft
Counted as living area: Yes

Heated: Yes
Finished: Yes
Enclosed: Yes
Contiguous: Yes
Permitted: Yes
Wet space: No
Addition: No
Conversion: No

12425 Southeast Harold Street, Powellhurst-Gilbert, Portland, Multnomah County, Oregon, United States,

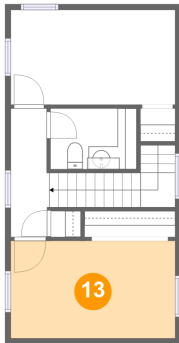
12 Floor 2 - Hall



Dimensions: 3'4" x 11'3"
Area: 77 sq. ft
Counted as living area: Yes

Heated: Yes
Finished: Yes
Enclosed: Yes
Contiguous: Yes
Permitted: Yes
Wet space: No
Addition: No
Conversion: No

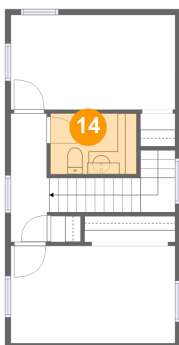
13 Floor 2 - Primary Bedroom



Dimensions: 14'5" x 8'6"
Area: 123 sq. ft
Counted as living area: Yes

Heated: Yes
Finished: Yes
Enclosed: Yes
Contiguous: Yes
Permitted: Yes
Wet space: No
Addition: No
Conversion: No

14 Floor 2 - WC



Dimensions: 7'7" x 3'2"
Area: 40 sq. ft
Counted as living area: Yes

Heated: Yes
Finished: Yes
Enclosed: Yes
Contiguous: Yes
Permitted: Yes
Wet space: Yes
Addition: No
Conversion: No