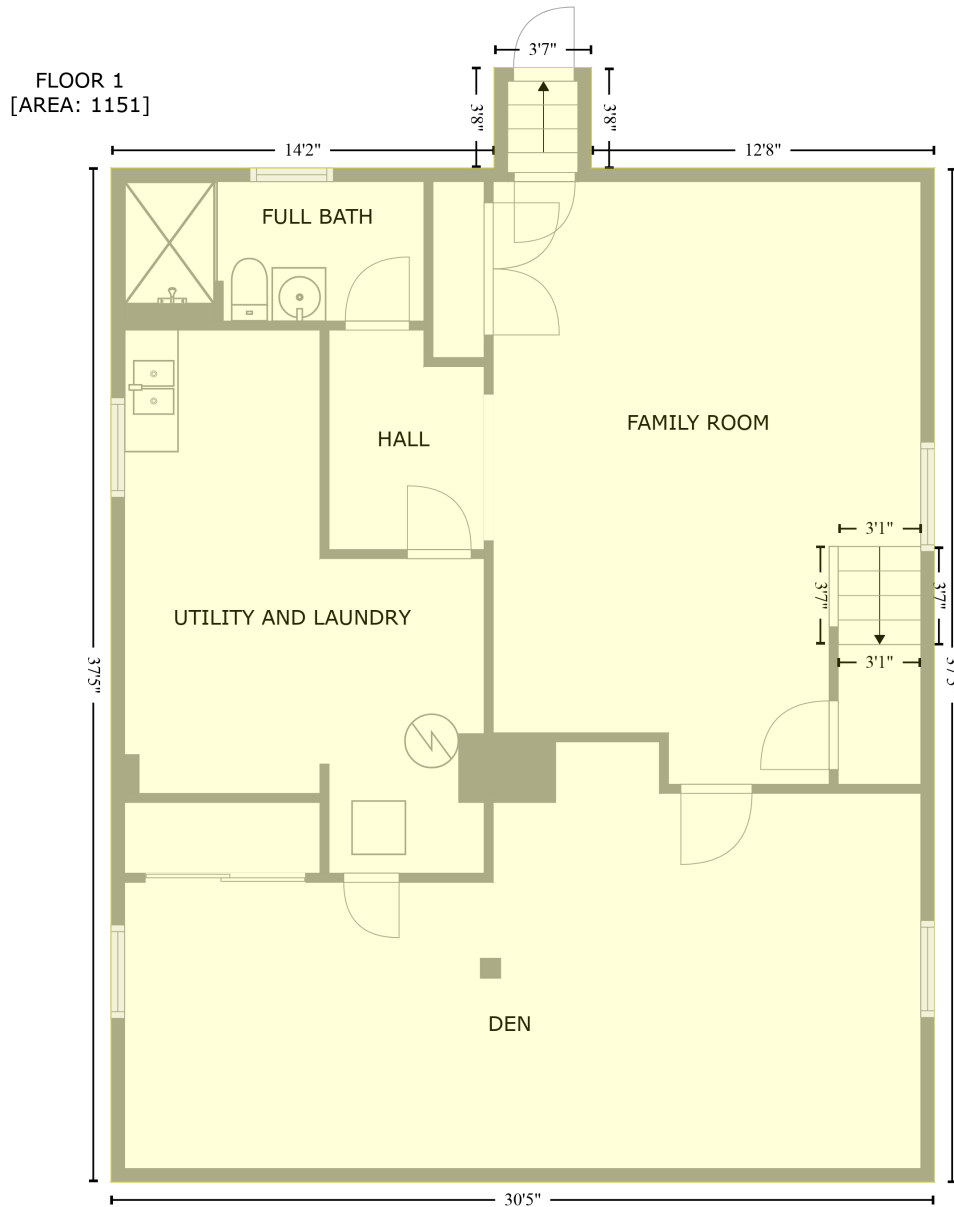


218 South 10th Street, Belleville, St. Clair County, Illinois, United States, 62220

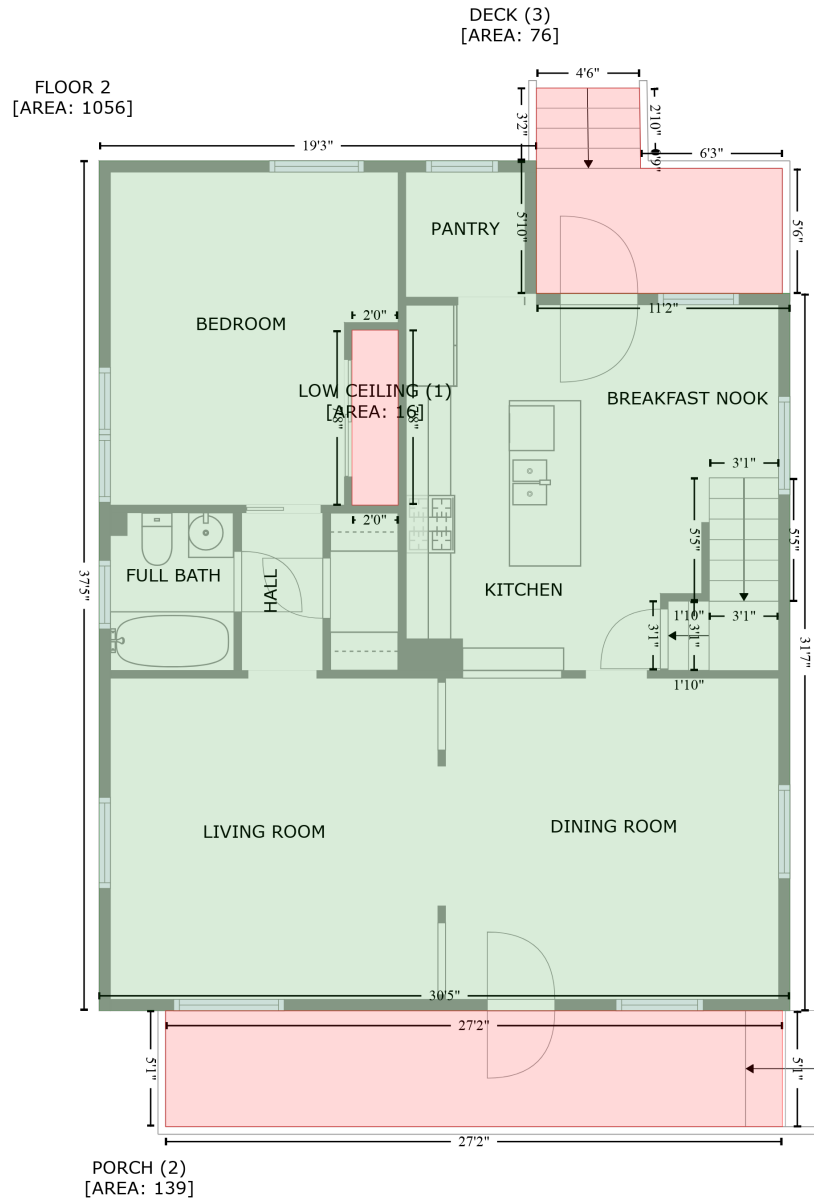
Gross Living Area: 1562 sq. ft



Space	Area (sq. ft)	Calculation <small>Coordinate Polygon Area Algorithm using inches</small>
FLOOR 1 (Living area)	1151	$ \begin{aligned} & -((226.5 + 226.5) * (110.9 - 155.4) + (226.5 + 378.4) * (155.4 - 155.4) + (378.4 + 378.4) * (155.4 - \\ & 604.4) + (378.4 + 13.7) * (604.4 - 604.4) + (13.7 + 13.7) * (604.4 - 155.4) + (13.7 + 183.4) * \\ & (155.4 - 155.4) + (183.4 + 183.4) * (155.4 - 110.9) + (183.4 + 226.5) * (110.9 - 110.9)) * 0.5 * \\ & 0.00694 \end{aligned} $

218 South 10th Street, Belleville, St. Clair County, Illinois, United States, 62220

Gross Living Area: 1562 sq. ft



Space	Area (sq. ft)	Calculation <small>Coordinate Polygon Area Algorithm using inches</small>
FLOOR 2 (Living area)	1056	$-\left((244.6 + 244.6) * (155.4 - 225.5) + (244.6 + 378.4) * (225.5 - 225.5) + (378.4 + 378.4) * (225.5 - 604.4) + (378.4 + 13.7) * (604.4 - 604.4) + (13.7 + 13.7) * (604.4 - 155.4) + (13.7 + 244.6) * (155.4 - 155.4)\right) * 0.5 + 0.00694 - \left((171.6 + 147.2) * (244.9 - 244.9) + (147.2 + 147.2) * (244.9 - 337.3) + (147.2 + 171.6) * (337.3 - 337.3) + (171.6 + 171.6) * (337.3 - 244.9)\right) * 0.5 + 0.00694$
LOW CEILING (Non-living area)	16	$-\left((171.6 + 171.6) * (244.9 - 337.3) + (171.6 + 147.2) * (337.3 - 337.3) + (147.2 + 147.2) * (337.3 - 244.9) + (147.2 + 171.6) * (244.9 - 244.9)\right) * 0.5 + 0.00694$

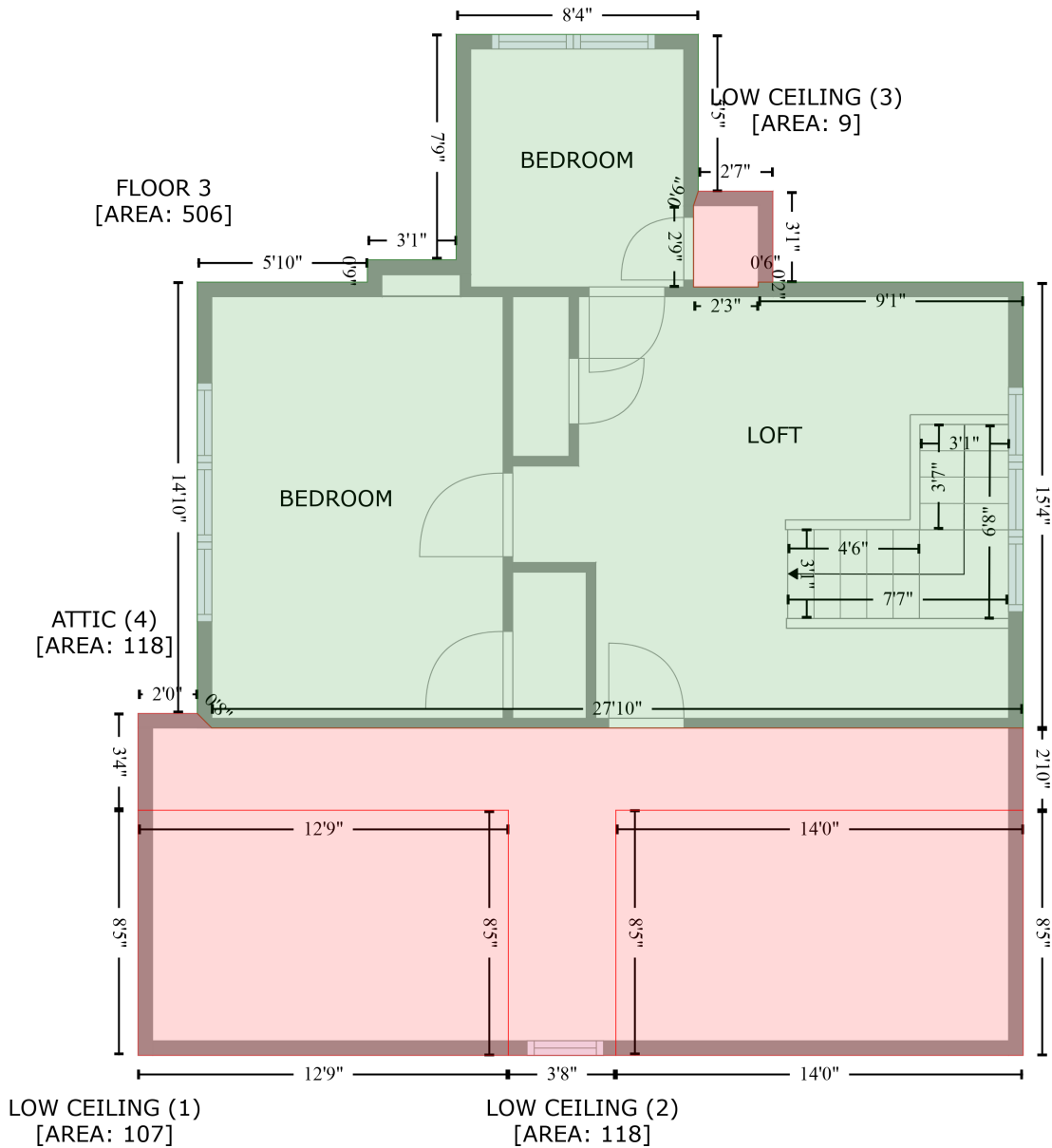
218 South 10th Street, Belleville, St. Clair County, Illinois, United States, 62220

Gross Living Area: 1562 sq. ft

Space	Area (sq. ft)	Calculation <small>Coordinate Polygon Area Algorithm using inches</small>
PORCH (Non-living area)	139	$-\left((374.4 + 374.4) * (604.4 - 665.7) + (374.4 + 48.8) * (665.7 - 665.7) + (48.8 + 48.8) * (665.7 - 604.4) + (48.8 + 374.4) * (604.4 - 604.4)\right) * 0.5 * 0.00694$
DECK (Non-living area)	76	$-\left((299 + 299.5) * (117 - 150.8) + (299.5 + 299.5) * (150.8 - 159.4) + (299.5 + 374.4) * (159.4 - 159.4) + (374.4 + 374.4) * (159.4 - 225.5) + (374.4 + 244.6) * (225.5 - 225.5) + (244.6 + 244.6) * (225.5 - 155.4) + (244.6 + 244.6) * (155.4 - 117) + (244.6 + 299) * (117 - 117)\right) * 0.5 * 0.00694$

218 South 10th Street, Belleville, St. Clair County, Illinois, United States, 62220

Gross Living Area: 1562 sq. ft



Space	Area (sq. ft)	Calculation <small>Coordinate Polygon Area Algorithm using inches</small>
FLOOR 3 (Living area)	506	$ \begin{aligned} & -((244.6 + 244.6) * (184.2 - 248.7) + (244.6 + 242.6) * (248.7 - 254.7) + (242.6 + 242.6) * (254.7 - \\ & 288.1) + (242.6 + 269.3) * (288.1 - 288.1) + (269.3 + 269.3) * (288.1 - 286.1) + (269.3 + 378.4) * \\ & (286.1 - 286.1) + (378.4 + 378.4) * (286.1 - 469.7) + (378.4 + 44.1) * (469.7 - 469.7) + (44.1 + \\ & 38.1) * (469.7 - 463.7) + (38.1 + 38.1) * (463.7 - 286.1) + (38.1 + 108.2) * (286.1 - 286.1) + (108.2 \\ & + 108.2) * (286.1 - 276.9) + (108.2 + 144.8) * (276.9 - 276.9) + (144.8 + 144.8) * (276.9 - 184.2) + \\ & (144.8 + 244.6) * (184.2 - 184.2)) * 0.5 * 0.00694 \end{aligned} $

218 South 10th Street, Belleville, St. Clair County, Illinois, United States, 62220

Gross Living Area: 1562 sq. ft

Space	Area (sq. ft)	Calculation <small>Coordinate Polygon Area Algorithm using inches</small>
LOW CEILING (Non-living area)	107	$-((166.3 + 166.3) * (503.5 - 604.4) + (166.3 + 13.7) * (604.4 - 604.4) + (13.7 + 13.7) * (604.4 - 503.5) + (13.7 + 166.3) * (503.5 - 503.5)) * 0.5 * 0.00694$
LOW CEILING (Non-living area)	118	$-((378.4 + 378.4) * (503.5 - 604.4) + (378.4 + 210.6) * (604.4 - 604.4) + (210.6 + 210.6) * (604.4 - 503.5) + (210.6 + 378.4) * (503.5 - 503.5)) * 0.5 * 0.00694$
LOW CEILING (Non-living area)	9	$-((275.3 + 275.3) * (248.7 - 286.1) + (275.3 + 269.3) * (286.1 - 286.1) + (269.3 + 269.3) * (286.1 - 288.1) + (269.3 + 242.6) * (288.1 - 288.1) + (242.6 + 242.6) * (288.1 - 254.7) + (242.6 + 244.6) * (254.7 - 248.7) + (244.6 + 275.3) * (248.7 - 248.7)) * 0.5 * 0.00694$
ATTIC (Non-living area)	118	$-((38.1 + 44.1) * (463.7 - 469.7) + (44.1 + 378.4) * (469.7 - 469.7) + (378.4 + 378.4) * (469.7 - 503.5) + (378.4 + 210.6) * (503.5 - 503.5) + (210.6 + 210.6) * (503.5 - 604.4) + (210.6 + 166.3) * (604.4 - 604.4) + (166.3 + 166.3) * (604.4 - 503.5) + (166.3 + 13.7) * (503.5 - 503.5) + (13.7 + 13.7) * (503.5 - 463.7) + (13.7 + 38.1) * (463.7 - 463.7)) * 0.5 * 0.00694$