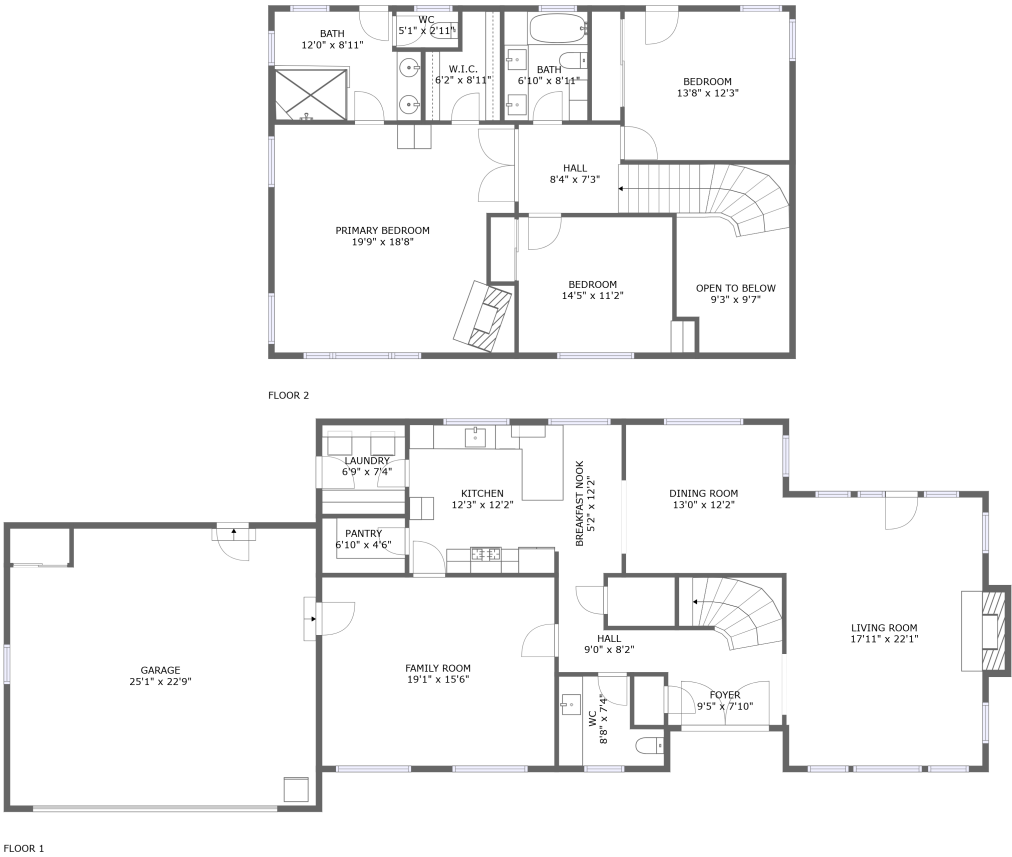


Home report

851 Spring Creek Way, Templeton, San Luis Obispo County, California, United States, 93465



Property summary


 **1** Garages


 **3** Bedrooms

 **2** Bathrooms

 **1** Half baths

 **2** Floors

 **2,629** Gross living area sqft

 **3,355** Total sqft

Home report

851 Spring Creek Way, Templeton, San Luis Obispo County, California, United States, 93465

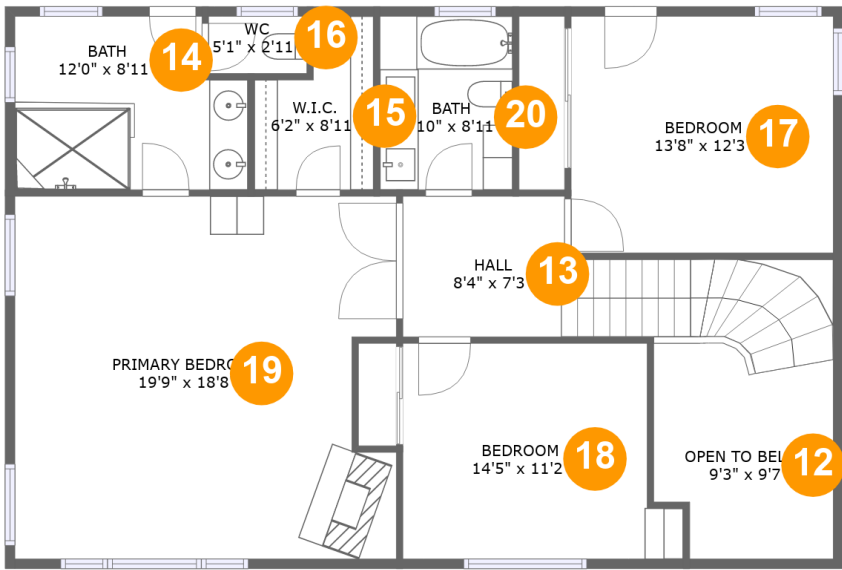


Room dimensions

Floor 1 Total sqft: 2099 Living area: 1474

#		Dimensions	sqft	Counted as living area
1	Dining Room	13'0" x 12'2"	158 sq. ft	Yes
2	Laundry	6'9" x 7'4"	50 sq. ft	Yes
3	Foyer	9'5" x 7'10"	109 sq. ft	Yes
4	Living Room	17'11" x 22'1"	368 sq. ft	Yes
5	Kitchen	12'3" x 12'2"	149 sq. ft	Yes
6	WC	8'8" x 7'4"	52 sq. ft	Yes
7	Breakfast Nook	5'2" x 12'2"	63 sq. ft	Yes
8	Family Room	19'1" x 15'6"	296 sq. ft	Yes
9	Hall	9'0" x 8'2"	48 sq. ft	Yes
10	Pantry	6'10" x 4'6"	31 sq. ft	Yes
11	Garage	25'1" x 22'9"	555 sq. ft	No

851 Spring Creek Way, Templeton, San Luis Obispo County,
California, United States, 93465



Room dimensions

Floor 2 Total sqft: 1256 Living area: 1155

#		Dimensions	sqft	Counted as living area
12	Open To Below	9'3" x 9'7"	92 sq. ft	No
13	Hall	8'4" x 7'3"	125 sq. ft	Yes
14	Bath	12'0" x 8'11"	100 sq. ft	Yes
15	W.I.C.	6'2" x 8'11"	45 sq. ft	Yes
16	WC	5'1" x 2'11"	15 sq. ft	Yes
17	Bedroom	13'8" x 12'3"	167 sq. ft	Yes
18	Bedroom	14'5" x 11'2"	145 sq. ft	Yes
19	Primary Bedroom	19'9" x 18'8"	355 sq. ft	Yes
20	Bath	6'10" x 8'11"	61 sq. ft	Yes

851 Spring Creek Way, Templeton, San Luis Obispo County,
California, United States, 93465

1 Floor 1 - Dining Room



Dimensions: 13'0" x 12'2"
Area: 158 sq. ft
Counted as living area: Yes

Heated: Yes
Finished: Yes
Enclosed: Yes
Contiguous: Yes
Permitted: Yes
Wet space: No
Addition: No
Conversion: No

2 Floor 1 - Laundry



Dimensions: 6'9" x 7'4"
Area: 50 sq. ft
Counted as living area: Yes

Heated: Yes
Finished: Yes
Enclosed: Yes
Contiguous: Yes
Permitted: Yes
Wet space: No
Addition: No
Conversion: No

851 Spring Creek Way, Templeton, San Luis Obispo County,
California, United States, 93465

3 Floor 1 - Foyer



Dimensions: 9'5" x 7'10"
Area: 109 sq. ft
Counted as living area: Yes

Heated: Yes
Finished: Yes
Enclosed: Yes
Contiguous: Yes
Permitted: Yes
Wet space: No
Addition: No
Conversion: No

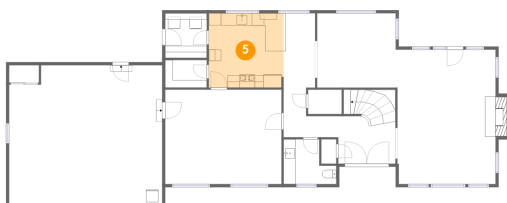
4 Floor 1 - Living Room



Dimensions: 17'11" x 22'1"
Area: 368 sq. ft
Counted as living area: Yes

Heated: Yes
Finished: Yes
Enclosed: Yes
Contiguous: Yes
Permitted: Yes
Wet space: No
Addition: No
Conversion: No

5 Floor 1 - Kitchen

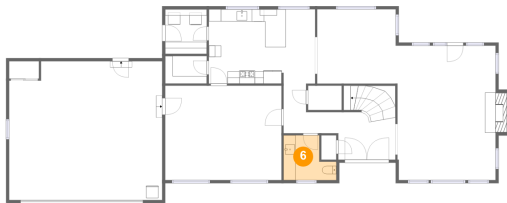


Dimensions: 12'3" x 12'2"
Area: 149 sq. ft
Counted as living area: Yes

Heated: Yes
Finished: Yes
Enclosed: Yes
Contiguous: Yes
Permitted: Yes
Wet space: No
Addition: No
Conversion: No

851 Spring Creek Way, Templeton, San Luis Obispo County,
California, United States, 93465

6 Floor 1 - WC



Dimensions: 8'8" x 7'4"
Area: 52 sq. ft
Counted as living area: Yes

Heated: Yes
Finished: Yes
Enclosed: Yes
Contiguous: Yes
Permitted: Yes
Wet space: Yes
Addition: No
Conversion: No

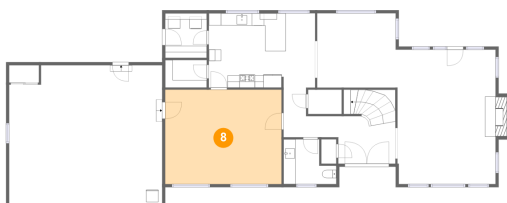
7 Floor 1 - Breakfast Nook



Dimensions: 5'2" x 12'2"
Area: 63 sq. ft
Counted as living area: Yes

Heated: Yes
Finished: Yes
Enclosed: Yes
Contiguous: Yes
Permitted: Yes
Wet space: No
Addition: No
Conversion: No

8 Floor 1 - Family Room

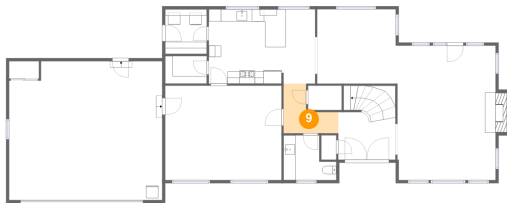


Dimensions: 19'1" x 15'6"
Area: 296 sq. ft
Counted as living area: Yes

Heated: Yes
Finished: Yes
Enclosed: Yes
Contiguous: Yes
Permitted: Yes
Wet space: No
Addition: No
Conversion: No

851 Spring Creek Way, Templeton, San Luis Obispo County,
California, United States, 93465

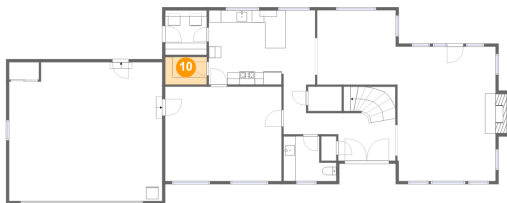
9 Floor 1 - Hall



Dimensions: 9'0" x 8'2"
Area: 48 sq. ft
Counted as living area: Yes

Heated: Yes
Finished: Yes
Enclosed: Yes
Contiguous: Yes
Permitted: Yes
Wet space: No
Addition: No
Conversion: No

10 Floor 1 - Pantry



Dimensions: 6'10" x 4'6"
Area: 31 sq. ft
Counted as living area: Yes

Heated: Yes
Finished: Yes
Enclosed: Yes
Contiguous: Yes
Permitted: Yes
Wet space: No
Addition: No
Conversion: No

11 Floor 1 - Garage

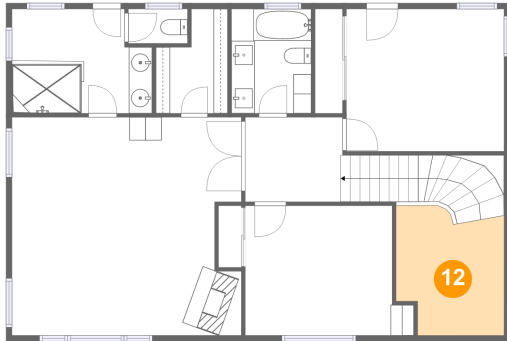


Dimensions: 25'1" x 22'9"
Area: 555 sq. ft
Counted as living area: No

Heated: No
Finished: No
Enclosed: Yes
Contiguous: Yes
Permitted: Yes
Wet space: No
Addition: No
Conversion: No

851 Spring Creek Way, Templeton, San Luis Obispo County,
California, United States, 93465

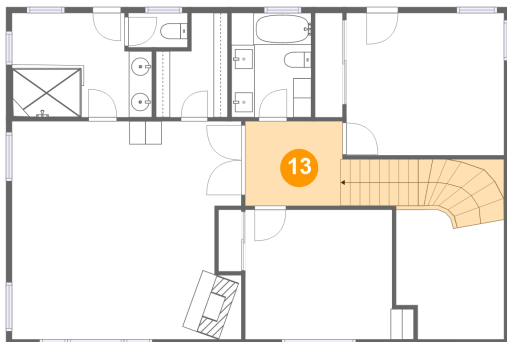
12 Floor 2 - Open To Below



Dimensions: 9'3" x 9'7"
Area: 92 sq. ft
Counted as living area: No

Heated: No
Finished: No
Enclosed: No
Contiguous: Yes
Permitted: No
Wet space: No
Addition: No
Conversion: No

13 Floor 2 - Hall



Dimensions: 8'4" x 7'3"
Area: 125 sq. ft
Counted as living area: Yes

Heated: Yes
Finished: Yes
Enclosed: Yes
Contiguous: Yes
Permitted: Yes
Wet space: No
Addition: No
Conversion: No

14 Floor 2 - Bath

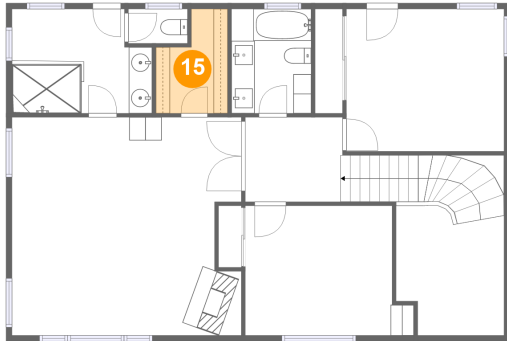


Dimensions: 12'0" x 8'11"
Area: 100 sq. ft
Counted as living area: Yes

Heated: Yes
Finished: Yes
Enclosed: Yes
Contiguous: Yes
Permitted: Yes
Wet space: Yes
Addition: No
Conversion: No

851 Spring Creek Way, Templeton, San Luis Obispo County,
California, United States, 93465

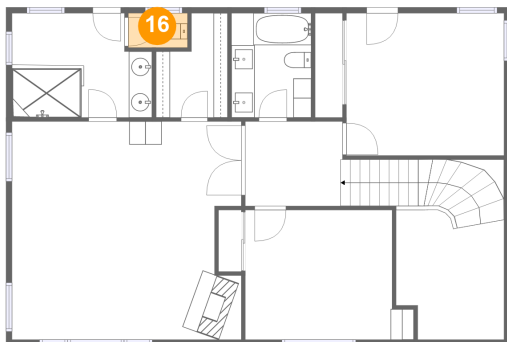
15 Floor 2 - W.I.C.



Dimensions: 6'2" x 8'11"
Area: 45 sq. ft
Counted as living area: Yes

Heated: Yes
Finished: Yes
Enclosed: Yes
Contiguous: Yes
Permitted: Yes
Wet space: No
Addition: No
Conversion: No

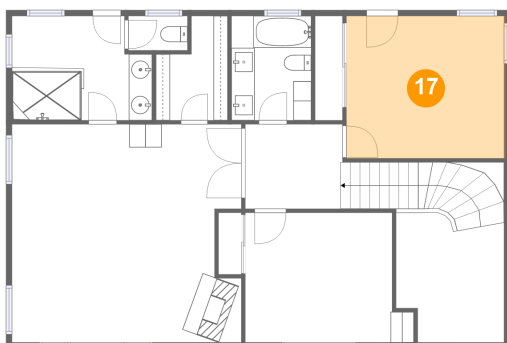
16 Floor 2 - WC



Dimensions: 5'1" x 2'11"
Area: 15 sq. ft
Counted as living area: Yes

Heated: Yes
Finished: Yes
Enclosed: Yes
Contiguous: Yes
Permitted: Yes
Wet space: Yes
Addition: No
Conversion: No

17 Floor 2 - Bedroom

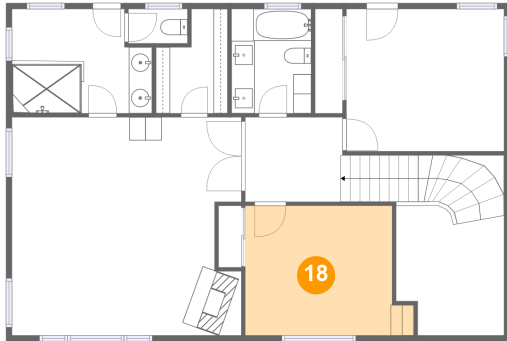


Dimensions: 13'8" x 12'3"
Area: 167 sq. ft
Counted as living area: Yes

Heated: Yes
Finished: Yes
Enclosed: Yes
Contiguous: Yes
Permitted: Yes
Wet space: No
Addition: No
Conversion: No

851 Spring Creek Way, Templeton, San Luis Obispo County,
California, United States, 93465

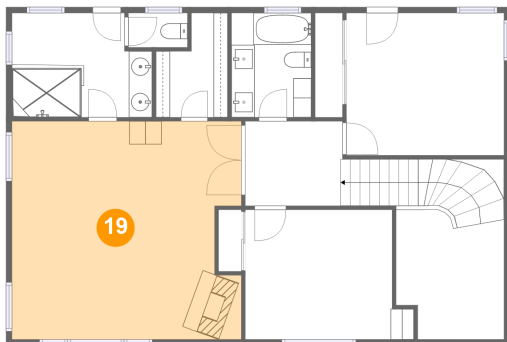
18 Floor 2 - Bedroom



Dimensions: 14'5" x 11'2"
Area: 145 sq. ft
Counted as living area: Yes

Heated: Yes
Finished: Yes
Enclosed: Yes
Contiguous: Yes
Permitted: Yes
Wet space: No
Addition: No
Conversion: No

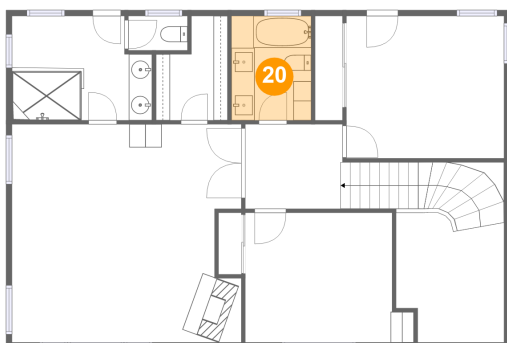
19 Floor 2 - Primary Bedroom



Dimensions: 19'9" x 18'8"
Area: 355 sq. ft
Counted as living area: Yes

Heated: Yes
Finished: Yes
Enclosed: Yes
Contiguous: Yes
Permitted: Yes
Wet space: No
Addition: No
Conversion: No

20 Floor 2 - Bath



Dimensions: 6'10" x 8'11"
Area: 61 sq. ft
Counted as living area: Yes

Heated: Yes
Finished: Yes
Enclosed: Yes
Contiguous: Yes
Permitted: Yes
Wet space: Yes
Addition: No
Conversion: No