

Home report

1363 Gander Lane, Bedford, Bedford County, Virginia, United States, 24523



FLOOR 1


Total Area: 1513 sq. ft

Floor 1: 1513 sq. ft

Excluded: Walls: 86 sq. ft

Property summary

 1 Floors

 3 Bedrooms

 2 Bathrooms

Home report

1363 Gander Lane, Bedford, Bedford County, Virginia, United States, 24523



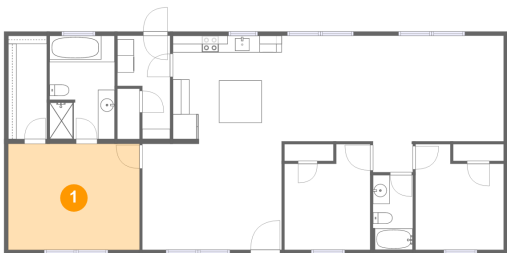
Room dimensions

Floor 1 Total:1513sqft Excluded: 0sqft

#		Max Dimensions	sqft	Included
1	Primary Bedroom	15'8" x 12'8"	198 sq. ft	Yes
2	Laundry	6'4" x 12'4"	59 sq. ft	Yes
3	Kitchen	13'0" x 12'7"	163 sq. ft	Yes
4	Living Room	16'7" x 12'11"	214 sq. ft	Yes
5	Bath	4'9" x 8'11"	42 sq. ft	Yes
6	Bedroom	10'3" x 12'7"	115 sq. ft	Yes
7	Bedroom	10'6" x 12'7"	118 sq. ft	Yes
8	Dining Area	9'2" x 12'7"	116 sq. ft	Yes
9	W.I.C.	4'7" x 12'4"	57 sq. ft	Yes
10	Primary Bath	7'9" x 12'4"	95 sq. ft	Yes
11	Family Room	17'4" x 16'4"	236 sq. ft	Yes

1363 Gander Lane, Bedford, Bedford County, Virginia, United States, 24523

1 Floor 1 - Primary Bedroom



Max Dimensions: 15'8" x 12'8"
Calculated Area: 198 sq. ft
Included: Yes

Heated: Yes
Finished: Yes
Enclosed: Yes
Contiguous: Yes
Permitted: Yes
Wet space: No
Addition: No
Conversion: No

2 Floor 1 - Laundry



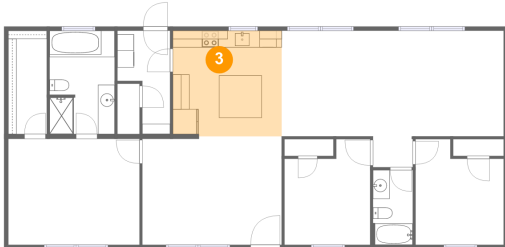
Max Dimensions: 6'4" x 12'4"
Calculated Area: 59 sq. ft
Included: Yes

Heated: Yes
Finished: Yes
Enclosed: Yes
Contiguous: Yes
Permitted: Yes
Wet space: No
Addition: No
Conversion: No

Home report

1363 Gander Lane, Bedford, Bedford County, Virginia, United States, 24523

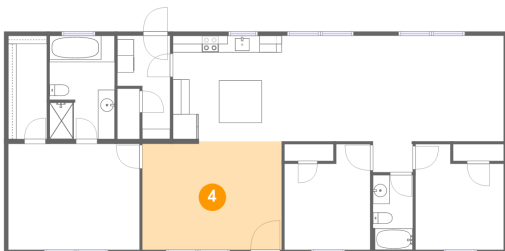
3 Floor 1 - Kitchen



Max Dimensions: 13'0" x 12'7"
Calculated Area: 163 sq. ft
Included: Yes

Heated: Yes
Finished: Yes
Enclosed: Yes
Contiguous: Yes
Permitted: Yes
Wet space: No
Addition: No
Conversion: No

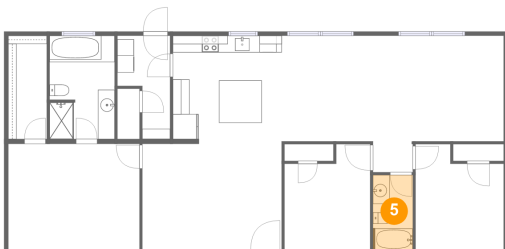
4 Floor 1 - Living Room



Max Dimensions: 16'7" x 12'11"
Calculated Area: 214 sq. ft
Included: Yes

Heated: Yes
Finished: Yes
Enclosed: Yes
Contiguous: Yes
Permitted: Yes
Wet space: No
Addition: No
Conversion: No

5 Floor 1 - Bath

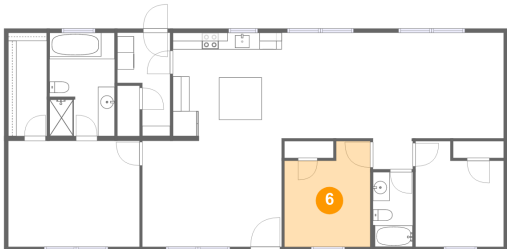


Max Dimensions: 4'9" x 8'11"
Calculated Area: 42 sq. ft
Included: Yes

Heated: Yes
Finished: Yes
Enclosed: Yes
Contiguous: Yes
Permitted: Yes
Wet space: Yes
Addition: No
Conversion: No

1363 Gander Lane, Bedford, Bedford County, Virginia, United States, 24523

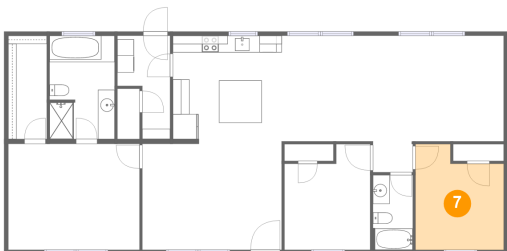
6 Floor 1 - Bedroom



Max Dimensions: 10'3" x 12'7"
Calculated Area: 115 sq. ft
Included: Yes

Heated: Yes
Finished: Yes
Enclosed: Yes
Contiguous: Yes
Permitted: Yes
Wet space: No
Addition: No
Conversion: No

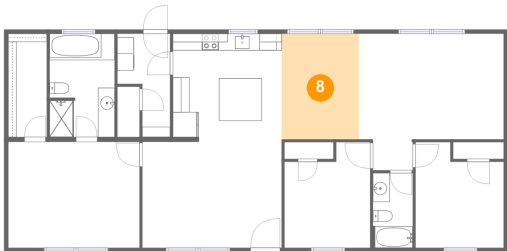
7 Floor 1 - Bedroom



Max Dimensions: 10'6" x 12'7"
Calculated Area: 118 sq. ft
Included: Yes

Heated: Yes
Finished: Yes
Enclosed: Yes
Contiguous: Yes
Permitted: Yes
Wet space: No
Addition: No
Conversion: No

8 Floor 1 - Dining Area



Max Dimensions: 9'2" x 12'7"
Calculated Area: 116 sq. ft
Included: Yes

Heated: Yes
Finished: Yes
Enclosed: Yes
Contiguous: Yes
Permitted: Yes
Wet space: No
Addition: No
Conversion: No

1363 Gander Lane, Bedford, Bedford County, Virginia, United States, 24523

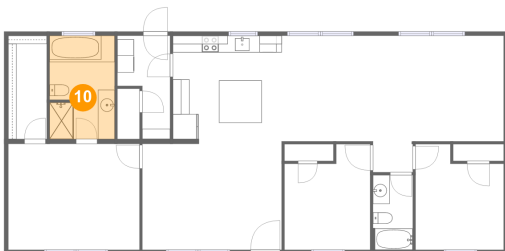
9 Floor 1 - W.I.C.



Max Dimensions: 4'7" x 12'4"
Calculated Area: 57 sq. ft
Included: Yes

Heated: Yes
Finished: Yes
Enclosed: Yes
Contiguous: Yes
Permitted: Yes
Wet space: No
Addition: No
Conversion: No

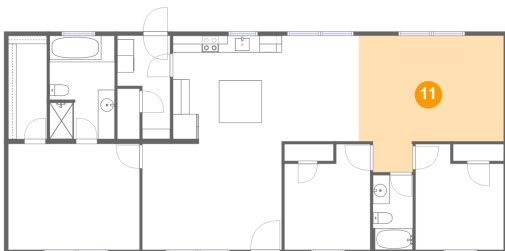
10 Floor 1 - Primary Bath



Max Dimensions: 7'9" x 12'4"
Calculated Area: 95 sq. ft
Included: Yes

Heated: Yes
Finished: Yes
Enclosed: Yes
Contiguous: Yes
Permitted: Yes
Wet space: Yes
Addition: No
Conversion: No

11 Floor 1 - Family Room



Max Dimensions: 17'4" x 16'4"
Calculated Area: 236 sq. ft
Included: Yes

Heated: Yes
Finished: Yes
Enclosed: Yes
Contiguous: Yes
Permitted: Yes
Wet space: No
Addition: No
Conversion: No