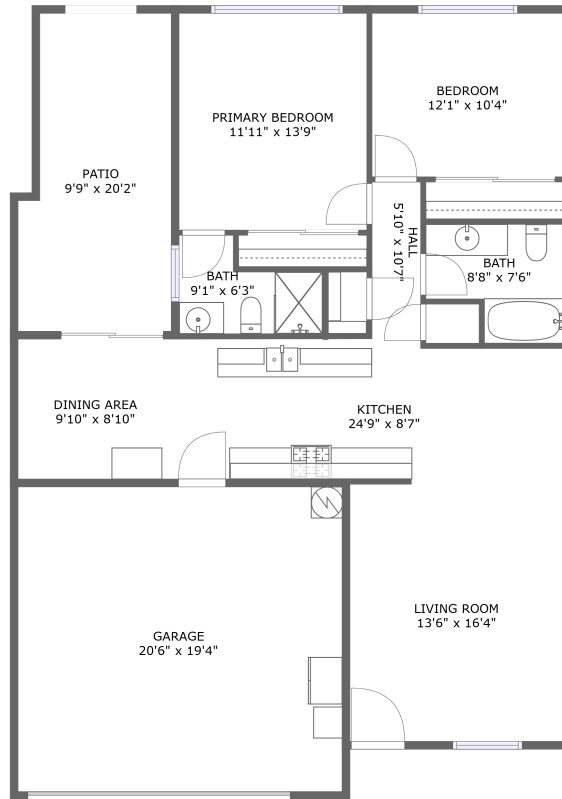


526 Queenanne Road, Paso Robles, San Luis Obispo County, California, United States, 93446




Property Summary


 **1** garages

 **2** bedrooms

 **2** bathrooms

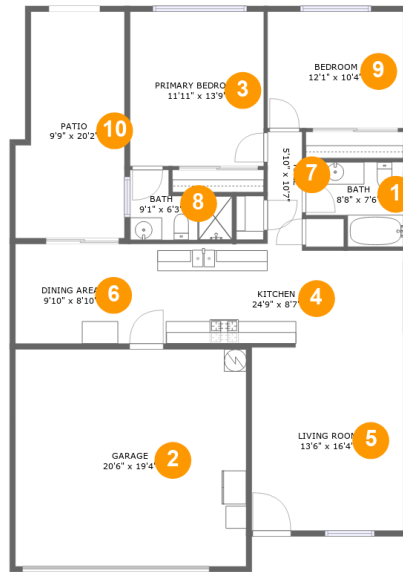
 **0** half baths

 **1** floors

 **1,084** Gross Living Area sqft

 **1,722** total sqft

526 Queenanne Road, Paso Robles, San Luis Obispo County, California, United States, 93446



Room Dimensions

Floor 1

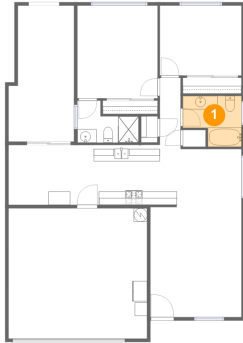
Total sqft: 1722

Living area: 1084

#	Room name	Dimensions	Area (sqft)	Counted as Living Area
1	Bath	8'8" x 7'6"	55 sq. ft	Yes
2	Garage	20'6" x 19'4"	397 sq. ft	No
3	Primary Bedroom	11'11" x 13'9"	163 sq. ft	Yes
4	Kitchen	24'9" x 8'7"	208 sq. ft	Yes
5	Living Room	13'6" x 16'4"	220 sq. ft	Yes
6	Dining Area	9'10" x 8'10"	87 sq. ft	Yes
7	Hall	5'10" x 10'7"	40 sq. ft	No
8	Bath	9'1" x 6'3"	44 sq. ft	Yes
9	Bedroom	12'1" x 10'4"	125 sq. ft	Yes
10	Patio	9'9" x 20'2"	179 sq. ft	No

526 Queenanne Road, Paso Robles, San Luis Obispo County, California, United States, 93446

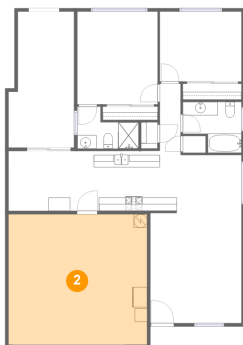
1 Floor 1 - Bath



Dimensions: 8'8" x 7'6"
Area: 55 sq. ft
Counted as Living Area:
Yes

Heated: Yes
Finished: Yes
Enclosed: Yes
Contiguous:
Yes
Permitted: Yes
Wet Space: Yes
Addition: No
Conversion: No

2 Floor 1 - Garage

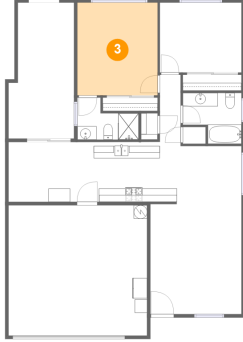


Dimensions: 20'6" x 19'4"
Area: 397 sq. ft
Counted as Living Area: No

Heated: No
Finished: No
Enclosed: Yes
Contiguous: Yes
Permitted: Yes
Wet Space: No
Addition: No
Conversion: No

526 Queenanne Road, Paso Robles, San Luis Obispo County, California, United States, 93446

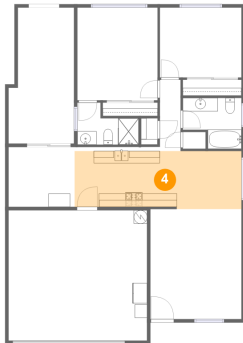
3 Floor 1 - Primary Bedroom



Dimensions: 11'11" x 13'9"
Area: 163 sq. ft
Counted as Living Area:
Yes

Heated: Yes
Finished: Yes
Enclosed: Yes
Contiguous:
Yes
Permitted: Yes
Wet Space: No
Addition: No
Conversion: No

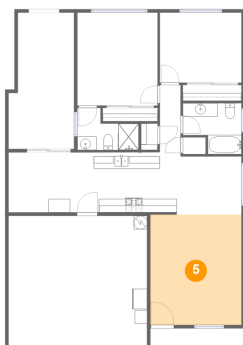
4 Floor 1 - Kitchen



Dimensions: 24'9" x 8'7"
Area: 208 sq. ft
Counted as Living Area:
Yes

Heated: Yes
Finished: Yes
Enclosed: Yes
Contiguous:
Yes
Permitted: Yes
Wet Space: No
Addition: No
Conversion: No

5 Floor 1 - Living Room

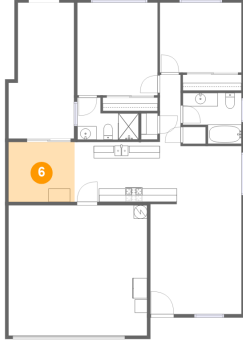


Dimensions: 13'6" x 16'4"
Area: 220 sq. ft
Counted as Living Area:
Yes

Heated: Yes
Finished: Yes
Enclosed: Yes
Contiguous:
Yes
Permitted: Yes
Wet Space: No
Addition: No
Conversion: No

526 Queenanne Road, Paso Robles, San Luis Obispo County, California, United States, 93446

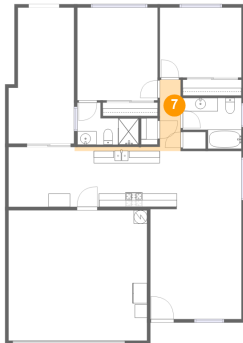
6 Floor 1 - Dining Area



Dimensions: 9'10" x 8'10"
Area: 87 sq. ft
Counted as Living Area:
Yes

Heated: Yes
Finished: Yes
Enclosed: Yes
Contiguous:
Yes
Permitted: Yes
Wet Space: No
Addition: No
Conversion: No

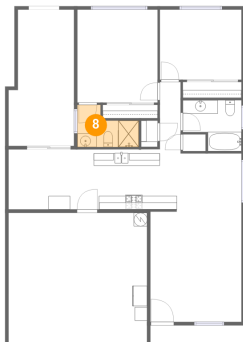
7 Floor 1 - Hall



Dimensions: 5'10" x 10'7"
Area: 40 sq. ft
Counted as Living Area: No

Heated: Yes
Finished: Yes
Enclosed: Yes
Contiguous: Yes
Permitted: Yes
Wet Space: No
Addition: No
Conversion: No

8 Floor 1 - Bath

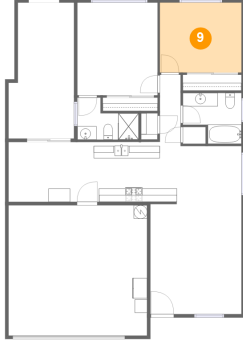


Dimensions: 9'1" x 6'3"
Area: 44 sq. ft
Counted as Living Area:
Yes

Heated: Yes
Finished: Yes
Enclosed: Yes
Contiguous:
Yes
Permitted: Yes
Wet Space: Yes
Addition: No
Conversion: No

526 Queenanne Road, Paso Robles, San Luis Obispo County, California, United States, 93446

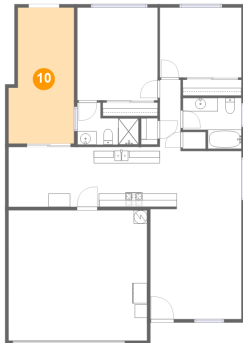
9 Floor 1 - Bedroom



Dimensions: 12'1" x 10'4"
Area: 125 sq. ft
Counted as Living Area:
Yes

Heated: Yes
Finished: Yes
Enclosed: Yes
Contiguous:
Yes
Permitted: Yes
Wet Space: No
Addition: No
Conversion: No

10 Floor 1 - Patio



Dimensions: 9'9" x 20'2"
Area: 179 sq. ft
Counted as Living Area: No

Heated: No
Finished: Yes
Enclosed: No
Contiguous: Yes
Permitted: Yes
Wet Space: No
Addition: No
Conversion: No