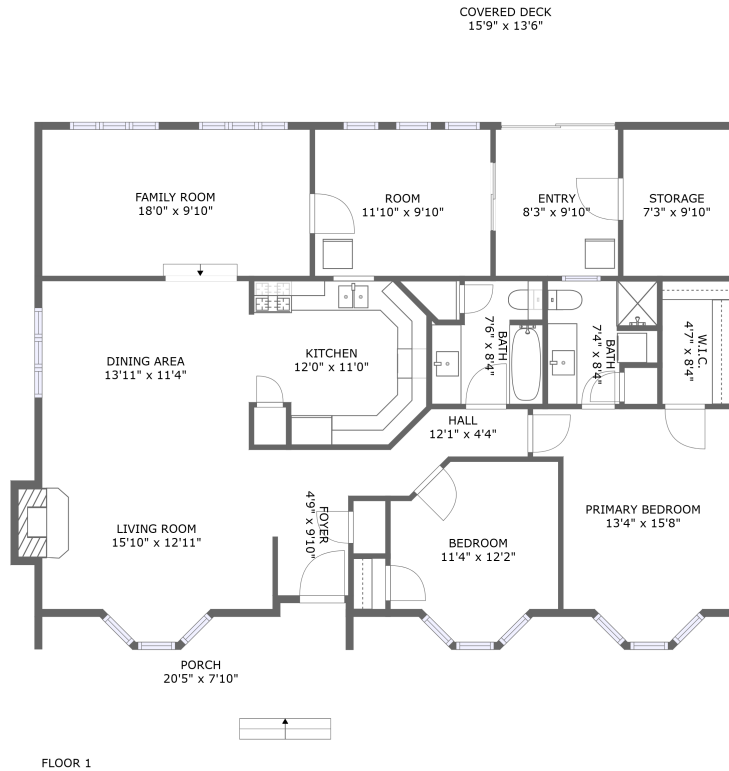


73 Corner Brook Trail, Innisfil, Simcoe County, Ontario, Canada, L9S 1N7

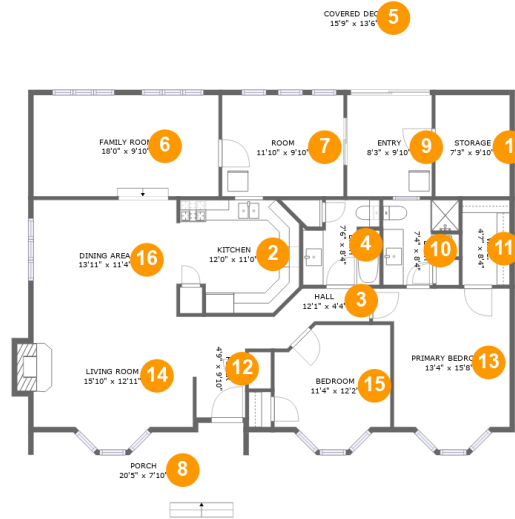


Property Summary

 **0** garages  **2** bedrooms  **2** bathrooms  **0** half baths

 **1** floors  **1,526** Gross Living Area sqft  **1,954** total sqft

73 Corner Brook Trail, Innisfil, Simcoe County, Ontario, Canada, L9S 1N7



Room Dimensions

Floor 1

Total sqft: 1954

Living area: 1526

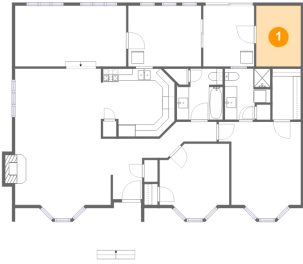
#	Room name	Dimensions	Area (sqft)	Counted as Living Area
1	Storage	7'3" x 9'10"	72 sq. ft	No
2	Kitchen	12'0" x 11'0"	118 sq. ft	Yes
3	Hall	12'1" x 4'4"	42 sq. ft	Yes
4	Bath	7'6" x 8'4"	55 sq. ft	Yes
5	Covered Deck	15'9" x 13'6"	200 sq. ft	No
6	Family Room	18'0" x 9'10"	178 sq. ft	Yes
7	Room	11'10" x 9'10"	117 sq. ft	Yes
8	Porch	20'5" x 7'10"	133 sq. ft	No
9	Entry	8'3" x 9'10"	82 sq. ft	Yes
10	Bath	7'4" x 8'4"	53 sq. ft	Yes
11	W.i.c.	4'7" x 8'4"	38 sq. ft	Yes

**73 Corner Brook Trail, Innisfil, Simcoe County,
Ontario, Canada, L9S 1N7**

#	Room name	Dimensions	Area (sqft)	Counted as Living Area
12	Foyer	4'9" x 9'10"	47 sq. ft	Yes
13	Primary Bedroom	13'4" x 15'8"	170 sq. ft	Yes
14	Living Room	15'10" x 12'11"	188 sq. ft	Yes
15	Bedroom	11'4" x 12'2"	116 sq. ft	Yes
16	Dining Area	13'11" x 11'4"	158 sq. ft	Yes

73 Corner Brook Trail, Innisfil, Simcoe County, Ontario, Canada, L9S 1N7

1 Floor 1 - Storage



Dimensions: 7'3" x 9'10"
Area: 72 sq. ft
Counted as Living Area: No

Heated: No
Finished: No
Enclosed: No
Contiguous: Yes
Permitted: Yes
Wet Space: No
Addition: No
Conversion: No

2 Floor 1 - Kitchen

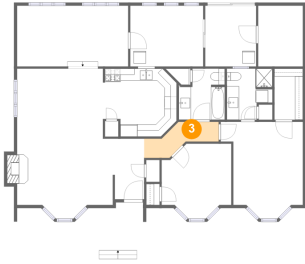


Dimensions: 12'0" x 11'0"
Area: 118 sq. ft
Counted as Living Area:
Yes

Heated: Yes
Finished: Yes
Enclosed: Yes
Contiguous:
Yes
Permitted: Yes
Wet Space: No
Addition: No
Conversion: No

73 Corner Brook Trail, Innisfil, Simcoe County, Ontario, Canada, L9S 1N7

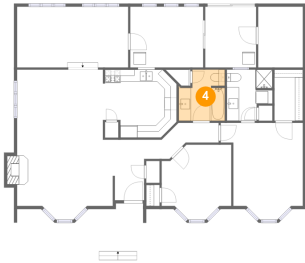
3 Floor 1 - Hall



Dimensions: 12'1" x 4'4"
Area: 42 sq. ft
Counted as Living Area:
Yes

Heated: Yes
Finished: Yes
Enclosed: Yes
Contiguous:
Yes
Permitted: Yes
Wet Space: No
Addition: No
Conversion: No

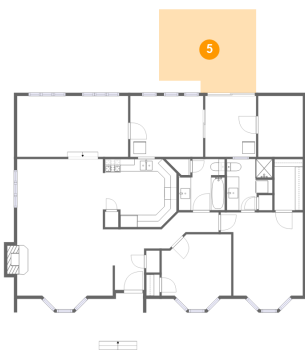
4 Floor 1 - Bath



Dimensions: 7'6" x 8'4"
Area: 55 sq. ft
Counted as Living Area:
Yes

Heated: Yes
Finished: Yes
Enclosed: Yes
Contiguous:
Yes
Permitted: Yes
Wet Space: Yes
Addition: No
Conversion: No

5 Floor 1 - Covered Deck

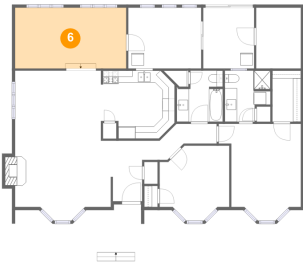


Dimensions: 15'9" x 13'6"
Area: 200 sq. ft
Counted as Living Area: No

Heated: No
Finished: Yes
Enclosed: No
Contiguous: Yes
Permitted: Yes
Wet Space: No
Addition: No
Conversion: No

73 Corner Brook Trail, Innisfil, Simcoe County, Ontario, Canada, L9S 1N7

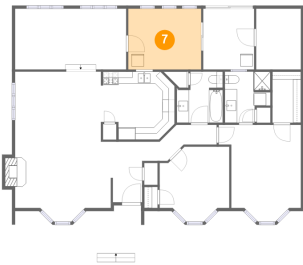
6 Floor 1 - Family Room



Dimensions: 18'0" x 9'10"
Area: 178 sq. ft
Counted as Living Area:
Yes

Heated: Yes
Finished: Yes
Enclosed: Yes
Contiguous:
Yes
Permitted: Yes
Wet Space: No
Addition: No
Conversion: No

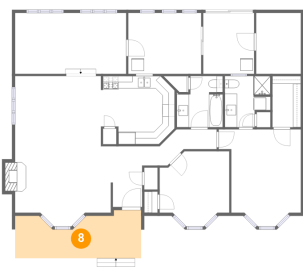
7 Floor 1 - Room



Dimensions: 11'10" x 9'10"
Area: 117 sq. ft
Counted as Living Area:
Yes

Heated: Yes
Finished: Yes
Enclosed: Yes
Contiguous:
Yes
Permitted: Yes
Wet Space: No
Addition: No
Conversion: No

8 Floor 1 - Porch

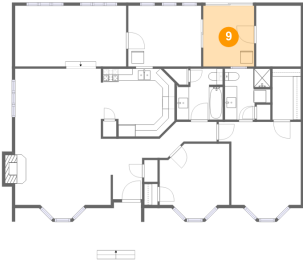


Dimensions: 20'5" x 7'10"
Area: 133 sq. ft
Counted as Living Area: No

Heated: No
Finished: Yes
Enclosed: No
Contiguous: Yes
Permitted: Yes
Wet Space: No
Addition: No
Conversion: No

73 Corner Brook Trail, Innisfil, Simcoe County, Ontario, Canada, L9S 1N7

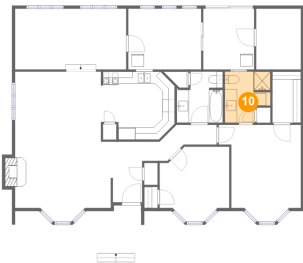
9 Floor 1 - Entry



Dimensions: 8'3" x 9'10"
Area: 82 sq. ft
Counted as Living Area:
Yes

Heated: Yes
Finished: Yes
Enclosed: Yes
Contiguous:
Yes
Permitted: Yes
Wet Space: No
Addition: No
Conversion: No

10 Floor 1 - Bath



Dimensions: 7'4" x 8'4"
Area: 53 sq. ft
Counted as Living Area:
Yes

Heated: Yes
Finished: Yes
Enclosed: Yes
Contiguous:
Yes
Permitted: Yes
Wet Space: Yes
Addition: No
Conversion: No

11 Floor 1 - W.i.c.

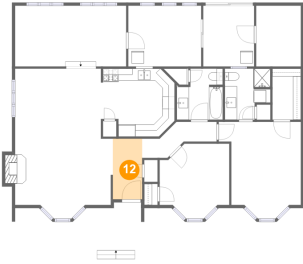


Dimensions: 4'7" x 8'4"
Area: 38 sq. ft
Counted as Living Area:
Yes

Heated: Yes
Finished: Yes
Enclosed: Yes
Contiguous:
Yes
Permitted: Yes
Wet Space: No
Addition: No
Conversion: No

73 Corner Brook Trail, Innisfil, Simcoe County, Ontario, Canada, L9S 1N7

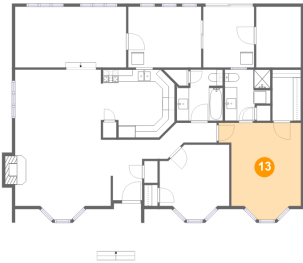
12 Floor 1 - Foyer



Dimensions: 4'9" x 9'10"
Area: 47 sq. ft
Counted as Living Area:
Yes

Heated: Yes
Finished: Yes
Enclosed: Yes
Contiguous:
Yes
Permitted: Yes
Wet Space: No
Addition: No
Conversion: No

13 Floor 1 - Primary Bedroom



Dimensions: 13'4" x 15'8"
Area: 170 sq. ft
Counted as Living Area:
Yes

Heated: Yes
Finished: Yes
Enclosed: Yes
Contiguous:
Yes
Permitted: Yes
Wet Space: No
Addition: No
Conversion: No

14 Floor 1 - Living Room

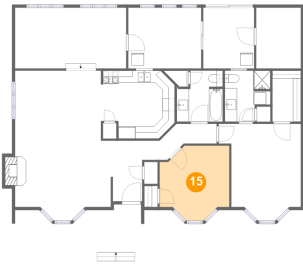


Dimensions: 15'10" x 12'11"
Area: 188 sq. ft
Counted as Living Area:
Yes

Heated: Yes
Finished: Yes
Enclosed: Yes
Contiguous:
Yes
Permitted: Yes
Wet Space: No
Addition: No
Conversion: No

73 Corner Brook Trail, Innisfil, Simcoe County, Ontario, Canada, L9S 1N7

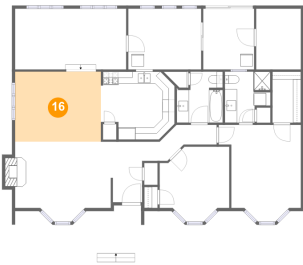
15 Floor 1 - Bedroom



Dimensions: 11'4" x 12'2"
Area: 116 sq. ft
Counted as Living Area:
Yes

Heated: Yes
Finished: Yes
Enclosed: Yes
Contiguous:
Yes
Permitted: Yes
Wet Space: No
Addition: No
Conversion: No

16 Floor 1 - Dining Area



Dimensions: 13'11" x 11'4"
Area: 158 sq. ft
Counted as Living Area:
Yes

Heated: Yes
Finished: Yes
Enclosed: Yes
Contiguous:
Yes
Permitted: Yes
Wet Space: No
Addition: No
Conversion: No