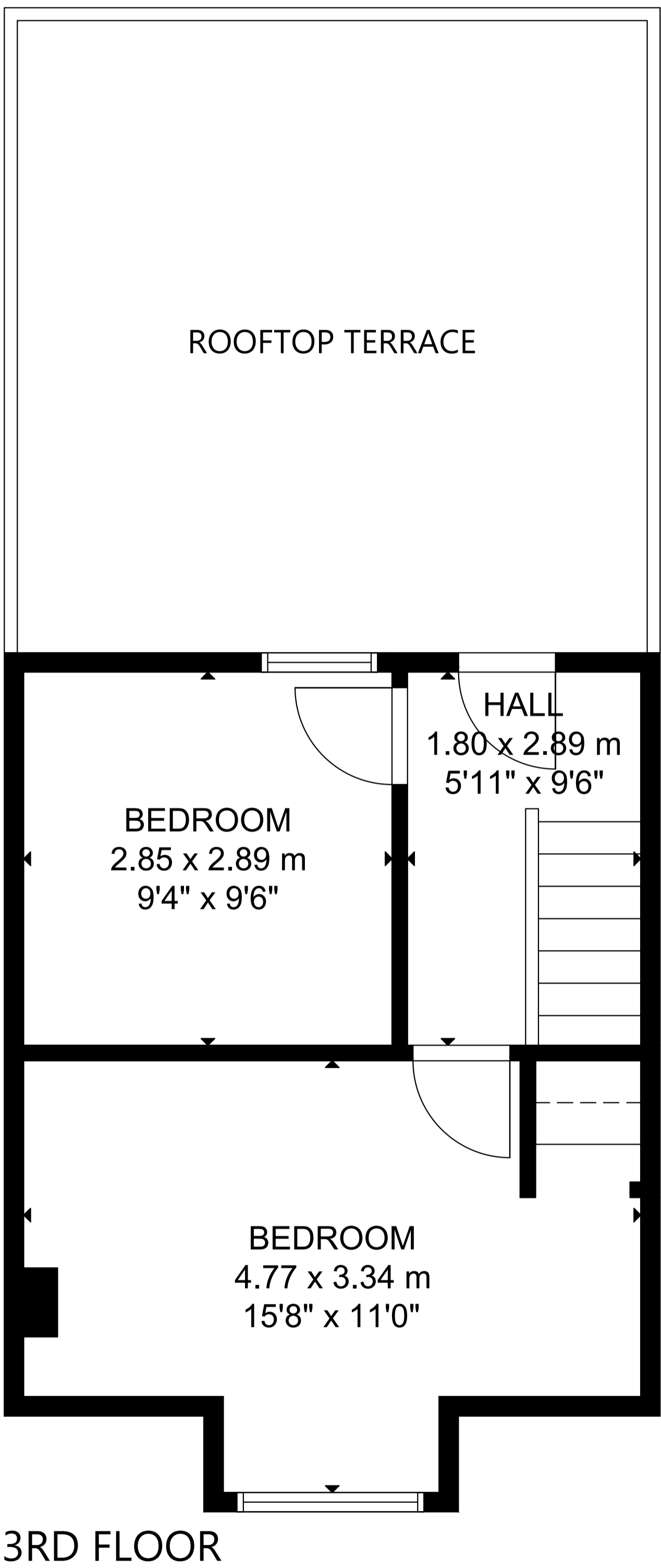
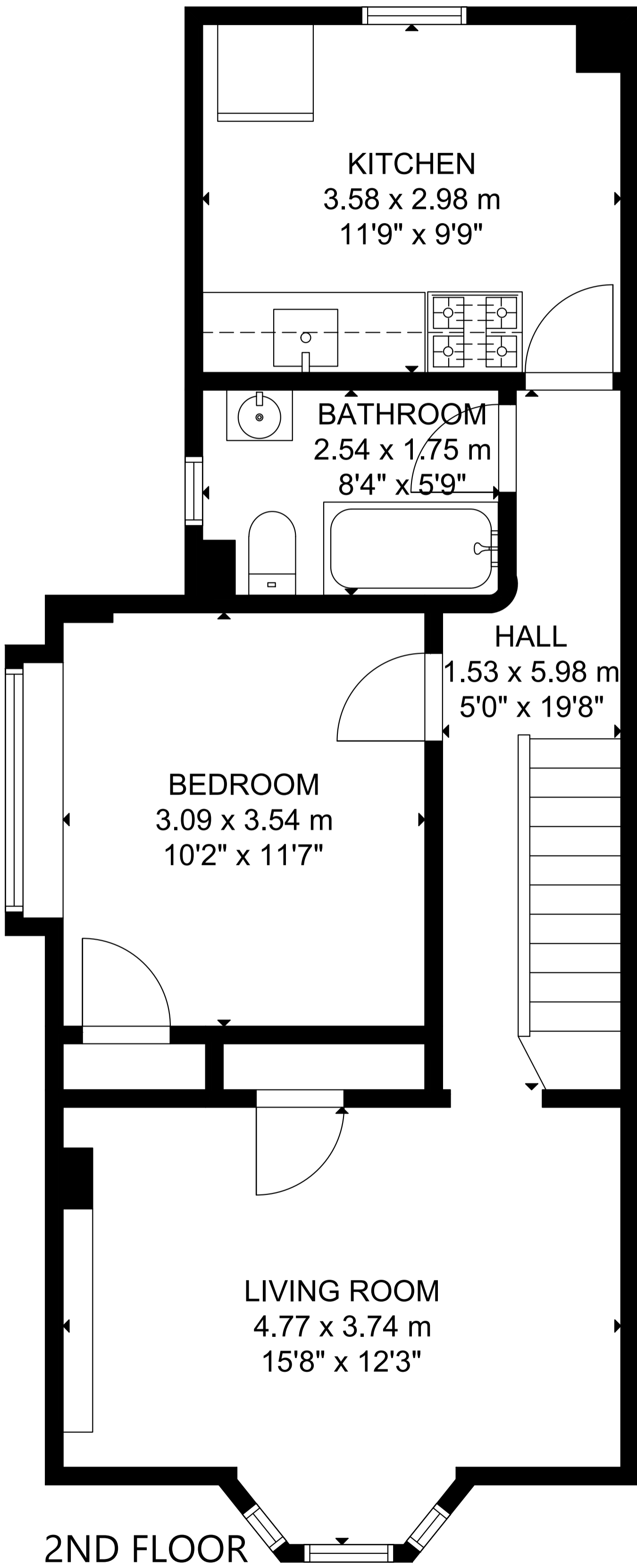
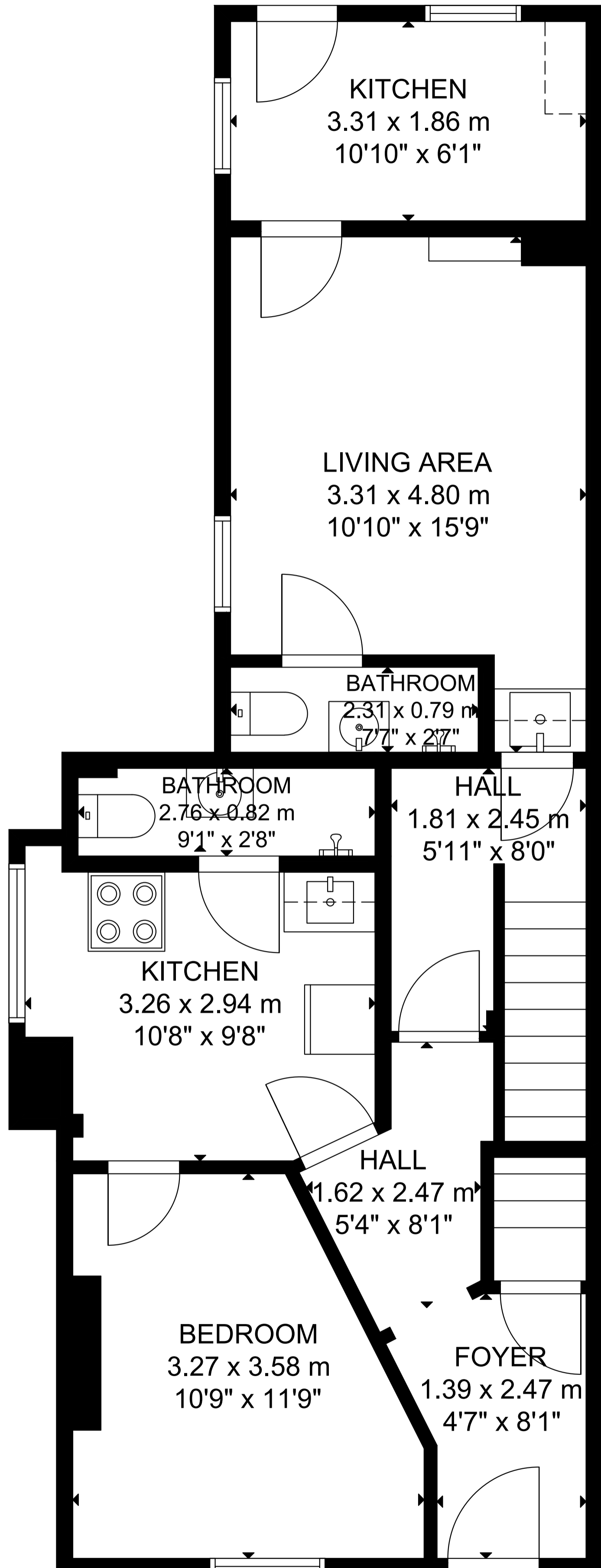
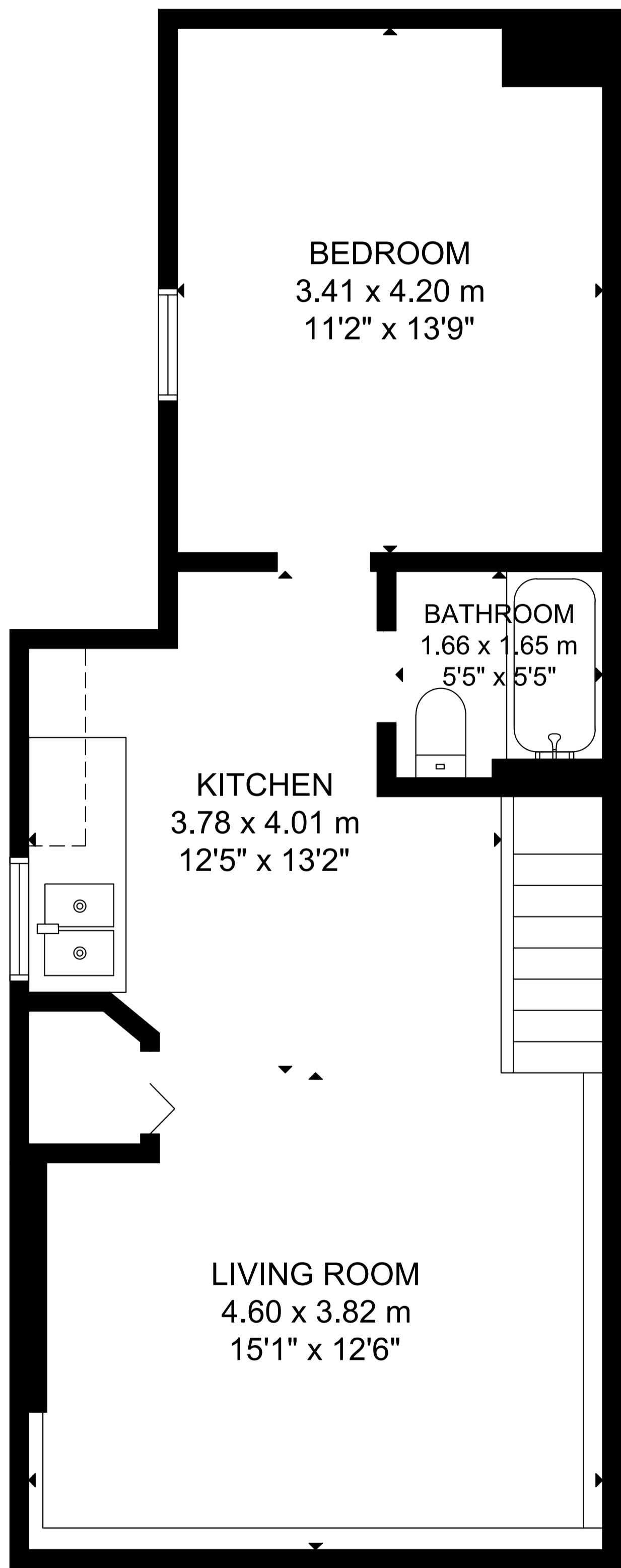


264 Ashdale Avenue



GROSS INTERNAL AREA
 LOWER LEVEL: 50 m²/539 sq ft, MAIN FLOOR: 59 m²/638 sq ft
 2ND FLOOR: 55 m²/587 sq ft, 3RD FLOOR: 28 m²/301 sq ft
 TOTAL: 192 m²/2,065 sq ft
 SIZE AND DIMENSIONS ARE APPROXIMATE, ACTUAL MAY VARY.