



Home report


9 Silverstone Crescent,Keswick,ON,CA





Property summary


 **1** Garages


 **4** Bedrooms

 **2** Bathrooms

 **1** Half baths

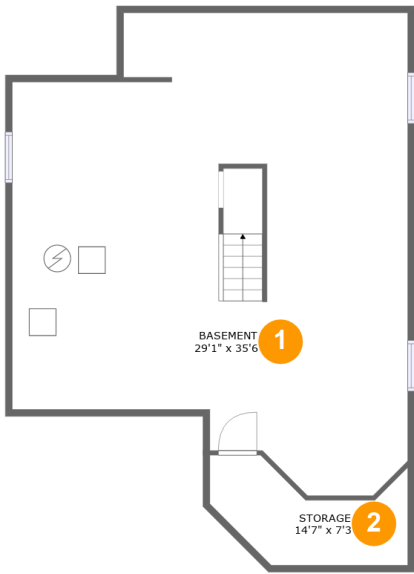
 **3** Floors

 **2,028** Gross living area sqft

 **3,621** Total sqft

Home report

9 Silverstone Crescent,Keswick,ON,CA



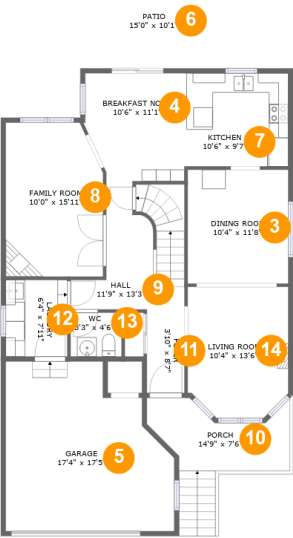
Room dimensions

Floor 1 Total sqft: 1035 Living area: 0

#		Dimensions	sqft	Counted as living area
1	Basement	29'1" x 35'6"	878 sq. ft	No
2	Storage	14'7" x 7'3"	80 sq. ft	No

Home report

9 Silverstone Crescent,Keswick,ON,CA



Room dimensions

Floor 2 Total sqft: 1504 Living area: 946

#		Dimensions	sqft	Counted as living area
3	Dining Room	10'4" x 11'8"	122 sq. ft	Yes
4	Breakfast Nook	10'6" x 11'1"	109 sq. ft	Yes
5	Garage	17'4" x 17'5"	261 sq. ft	No
6	Patio	15'0" x 10'1"	152 sq. ft	No
7	Kitchen	10'6" x 9'7"	101 sq. ft	Yes
8	Family Room	10'0" x 15'11"	153 sq. ft	Yes
9	Hall	11'9" x 13'3"	113 sq. ft	Yes
10	Porch	14'9" x 7'6"	105 sq. ft	No
11	Foyer	3'10" x 8'7"	33 sq. ft	Yes
12	Laundry	6'4" x 7'11"	50 sq. ft	Yes
13	WC	5'3" x 4'6"	24 sq. ft	Yes

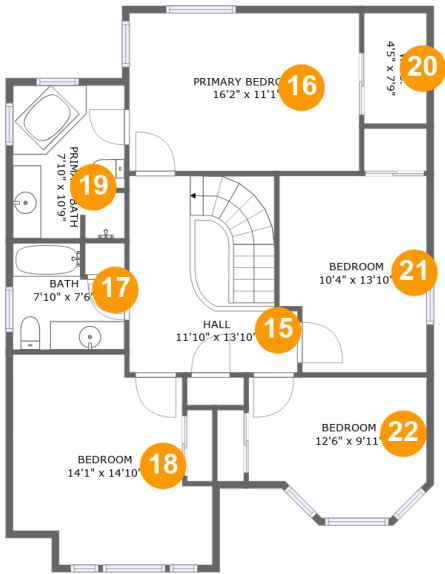
Home report

9 Silverstone Crescent,Keswick,ON,CA

#		Dimensions	sqft	Counted as living area
14	Living Room	10'4" x 13'6"	133 sq. ft	Yes

Home report

9 Silverstone Crescent,Keswick,ON,CA

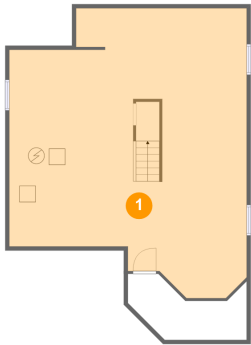


Room dimensions

Floor 3 Total sqft: 1082 Living area: 1082

#		Dimensions	sqft	Counted as living area
15	Hall	11'10" x 13'10"	149 sq. ft	Yes
16	Primary Bedroom	16'2" x 11'1"	180 sq. ft	Yes
17	Bath	7'10" x 7'6"	51 sq. ft	Yes
18	Bedroom	14'1" x 14'10"	174 sq. ft	Yes
19	Primary Bath	7'10" x 10'9"	84 sq. ft	Yes
20	W.I.C.	4'5" x 7'9"	34 sq. ft	Yes
21	Bedroom	10'4" x 13'10"	136 sq. ft	Yes
22	Bedroom	12'6" x 9'11"	111 sq. ft	Yes

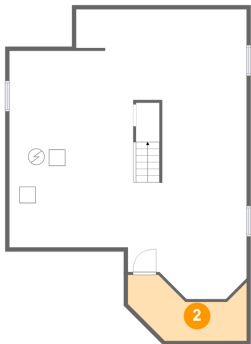
1 Floor 1 - Basement



Dimensions: 29'1" x 35'6"
Area: 878 sq. ft
Counted as living area: No

Heated: Yes
Finished: No
Enclosed: Yes
Contiguous: Yes
Permitted: Yes
Wet space: No
Addition: No
Conversion: No

2 Floor 1 - Storage



Dimensions: 14'7" x 7'3"
Area: 80 sq. ft
Counted as living area: No

Heated: No
Finished: No
Enclosed: No
Contiguous: Yes
Permitted: Yes
Wet space: No
Addition: No
Conversion: No

3 Floor 2 - Dining Room



Dimensions: 10'4" x 11'8"
Area: 122 sq. ft
Counted as living area: Yes

Heated: Yes
Finished: Yes
Enclosed: Yes
Contiguous: Yes
Permitted: Yes
Wet space: No
Addition: No
Conversion: No

4 Floor 2 - Breakfast Nook



Dimensions: 10'6" x 11'1"
Area: 109 sq. ft
Counted as living area: Yes

Heated: Yes
Finished: Yes
Enclosed: Yes
Contiguous: Yes
Permitted: Yes
Wet space: No
Addition: No
Conversion: No

5 Floor 2 - Garage



Dimensions: 17'4" x 17'5"
Area: 261 sq. ft
Counted as living area: No

Heated: No
Finished: No
Enclosed: Yes
Contiguous: Yes
Permitted: Yes
Wet space: No
Addition: No
Conversion: No

6 Floor 2 - Patio



Dimensions: 15'0" x 10'1"
Area: 152 sq. ft
Counted as living area: No

Heated: No
Finished: Yes
Enclosed: No
Contiguous: Yes
Permitted: Yes
Wet space: No
Addition: No
Conversion: No

7 Floor 2 - Kitchen



Dimensions: 10'6" x 9'7"
Area: 101 sq. ft
Counted as living area: Yes

Heated: Yes
Finished: Yes
Enclosed: Yes
Contiguous: Yes
Permitted: Yes
Wet space: No
Addition: No
Conversion: No

8 Floor 2 - Family Room



Dimensions: 10'0" x 15'11"
Area: 153 sq. ft
Counted as living area: Yes

Heated: Yes
Finished: Yes
Enclosed: Yes
Contiguous: Yes
Permitted: Yes
Wet space: No
Addition: No
Conversion: No

9 Floor 2 - Hall



Dimensions: 11'9" x 13'3"
Area: 113 sq. ft
Counted as living area: Yes

Heated: Yes
Finished: Yes
Enclosed: Yes
Contiguous: Yes
Permitted: Yes
Wet space: No
Addition: No
Conversion: No

10 Floor 2 - Porch



Dimensions: 14'9" x 7'6"
Area: 105 sq. ft
Counted as living area: No

Heated: No
Finished: Yes
Enclosed: No
Contiguous: Yes
Permitted: Yes
Wet space: No
Addition: No
Conversion: No

11 Floor 2 - Foyer



Dimensions: 3'10" x 8'7"
Area: 33 sq. ft
Counted as living area: Yes

Heated: Yes
Finished: Yes
Enclosed: Yes
Contiguous: Yes
Permitted: Yes
Wet space: No
Addition: No
Conversion: No

12 Floor 2 - Laundry



Dimensions: 6'4" x 7'11"
Area: 50 sq. ft
Counted as living area: Yes

Heated: Yes
Finished: Yes
Enclosed: Yes
Contiguous: Yes
Permitted: Yes
Wet space: No
Addition: No
Conversion: No

13 Floor 2 - WC



Dimensions: 5'3" x 4'6"
Area: 24 sq. ft
Counted as living area: Yes

Heated: Yes
Finished: Yes
Enclosed: Yes
Contiguous: Yes
Permitted: Yes
Wet space: Yes
Addition: No
Conversion: No

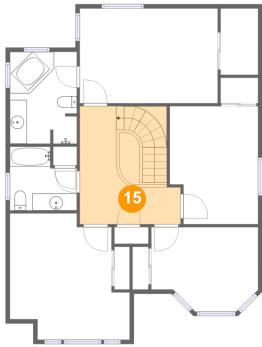
14 Floor 2 - Living Room



Dimensions: 10'4" x 13'6"
Area: 133 sq. ft
Counted as living area: Yes

Heated: Yes
Finished: Yes
Enclosed: Yes
Contiguous: Yes
Permitted: Yes
Wet space: No
Addition: No
Conversion: No

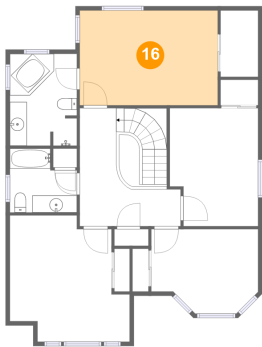
15 Floor 3 - Hall



Dimensions: 11'10" x 13'10"
Area: 149 sq. ft
Counted as living area: Yes

Heated: Yes
Finished: Yes
Enclosed: Yes
Contiguous: Yes
Permitted: Yes
Wet space: No
Addition: No
Conversion: No

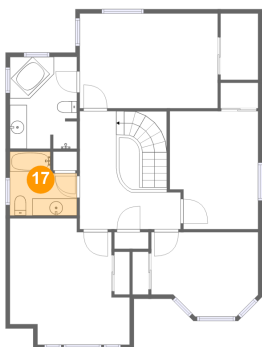
16 Floor 3 - Primary Bedroom



Dimensions: 16'2" x 11'1"
Area: 180 sq. ft
Counted as living area: Yes

Heated: Yes
Finished: Yes
Enclosed: Yes
Contiguous: Yes
Permitted: Yes
Wet space: No
Addition: No
Conversion: No

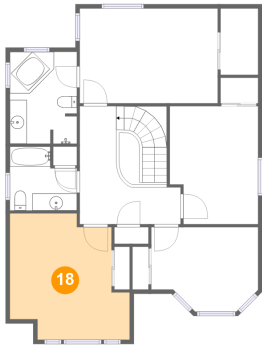
17 Floor 3 - Bath



Dimensions: 7'10" x 7'6"
Area: 51 sq. ft
Counted as living area: Yes

Heated: Yes
Finished: Yes
Enclosed: Yes
Contiguous: Yes
Permitted: Yes
Wet space: Yes
Addition: No
Conversion: No

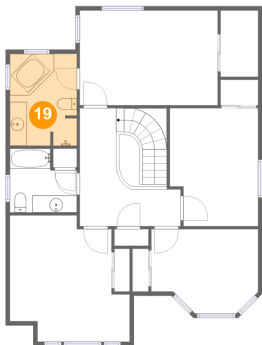
18 Floor 3 - Bedroom



Dimensions: 14'1" x 14'10"
Area: 174 sq. ft
Counted as living area: Yes

Heated: Yes
Finished: Yes
Enclosed: Yes
Contiguous: Yes
Permitted: Yes
Wet space: No
Addition: No
Conversion: No

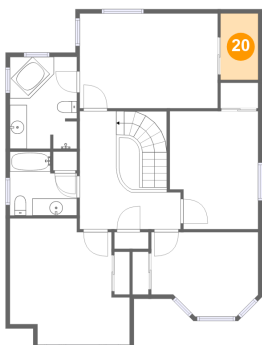
19 Floor 3 - Primary Bath



Dimensions: 7'10" x 10'9"
Area: 84 sq. ft
Counted as living area: Yes

Heated: Yes
Finished: Yes
Enclosed: Yes
Contiguous: Yes
Permitted: Yes
Wet space: Yes
Addition: No
Conversion: No

20 Floor 3 - W.I.C.



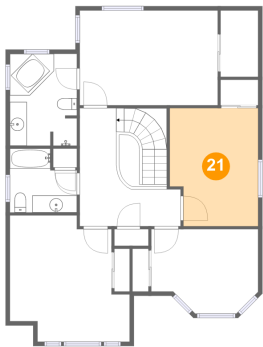
Dimensions: 4'5" x 7'9"
Area: 34 sq. ft
Counted as living area: Yes

Heated: Yes
Finished: Yes
Enclosed: Yes
Contiguous: Yes
Permitted: Yes
Wet space: No
Addition: No
Conversion: No

Home report

9 Silverstone Crescent,Keswick,ON,CA

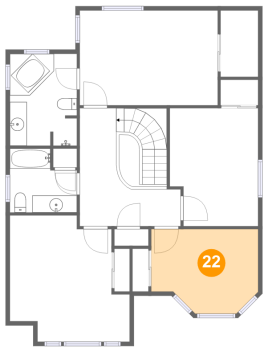
21 Floor 3 - Bedroom



Dimensions: 10'4" x 13'10"
Area: 136 sq. ft
Counted as living area: Yes

Heated: Yes
Finished: Yes
Enclosed: Yes
Contiguous: Yes
Permitted: Yes
Wet space: No
Addition: No
Conversion: No

22 Floor 3 - Bedroom



Dimensions: 12'6" x 9'11"
Area: 111 sq. ft
Counted as living area: Yes

Heated: Yes
Finished: Yes
Enclosed: Yes
Contiguous: Yes
Permitted: Yes
Wet space: No
Addition: No
Conversion: No