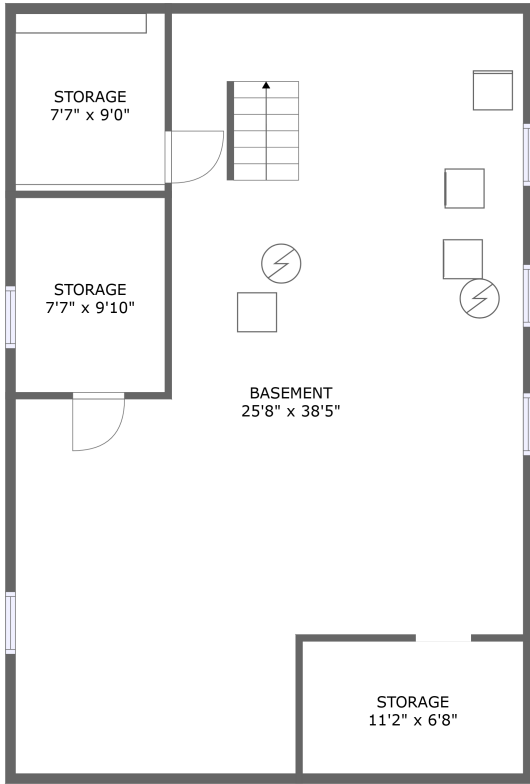
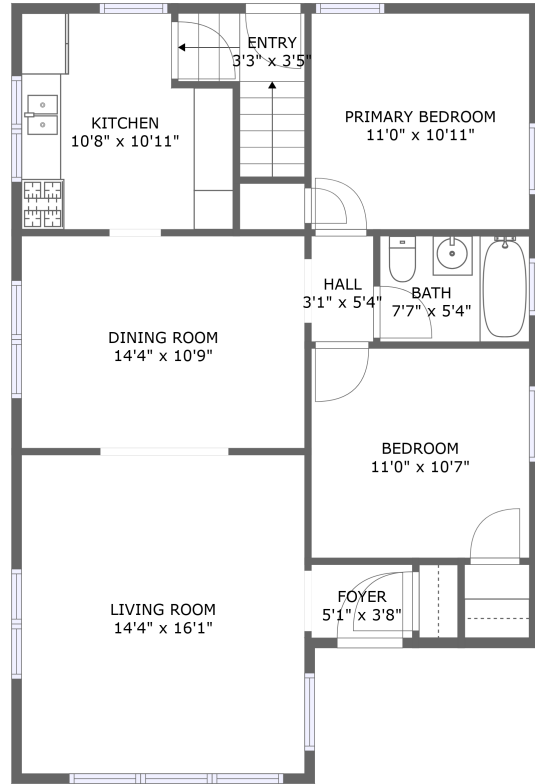


21510 Maple Street, Matteson, Cook County, Illinois, United States, 60443




BASEMENT



FLOOR 1

Property summary


 **0** Garages

 **2** Bedrooms

 **1** Bathrooms

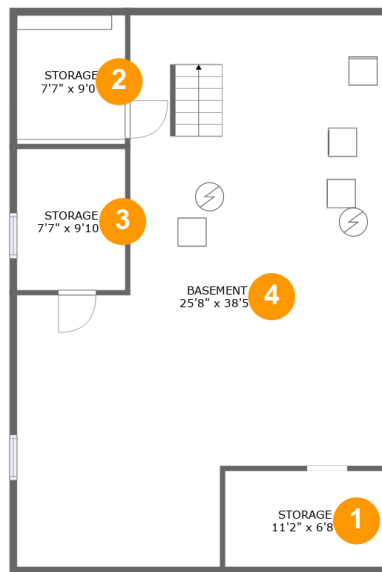
 **0** Half baths

 **2** Floors

 **973** Gross living area sqft

 **2,024** Total sqft

**21510 Maple Street, Matteson, Cook County, Illinois,
United States, 60443**



Room dimensions

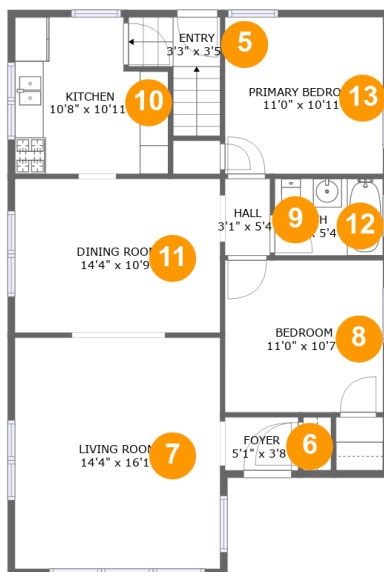
Floor 1

Total sqft: 1051

Living area: 0

#		Dimensions	sqft	Counted as living area
1	Storage	11'2" x 6'8"	75 sq. ft	No
2	Storage	7'7" x 9'0"	68 sq. ft	No
3	Storage	7'7" x 9'10"	74 sq. ft	No
4	Basement	25'8" x 38'5"	751 sq. ft	No

**21510 Maple Street, Matteson, Cook County, Illinois,
United States, 60443**



Room dimensions

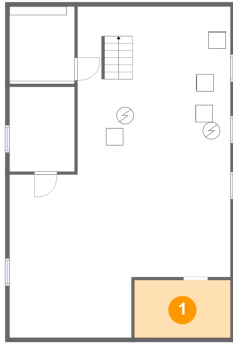
Floor 2

Total sqft: 973 Living area: 973

#		Dimensions	sqft	Counted as living area
5	Entry	3'3" x 3'5"	38 sq. ft	Yes
6	Foyer	5'1" x 3'8"	19 sq. ft	Yes
7	Living Room	14'4" x 16'1"	230 sq. ft	Yes
8	Bedroom	11'0" x 10'7"	117 sq. ft	Yes
9	Hall	3'1" x 5'4"	17 sq. ft	Yes
10	Kitchen	10'8" x 10'11"	105 sq. ft	Yes
11	Dining Room	14'4" x 10'9"	153 sq. ft	Yes
12	Bath	7'7" x 5'4"	40 sq. ft	Yes
13	Primary Bedroom	11'0" x 10'11"	120 sq. ft	Yes

21510 Maple Street, Matteson, Cook County, Illinois,
United States, 60443

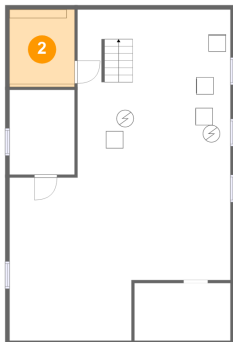
1 Floor 1 - Storage



Dimensions: 11'2" x 6'8"
Area: 75 sq. ft
Counted as living area: No

Heated: No
Finished: No
Enclosed: No
Contiguous: Yes
Permitted: Yes
Wet space: No
Addition: No
Conversion: No

2 Floor 1 - Storage

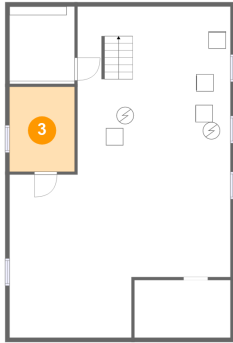


Dimensions: 7'7" x 9'0"
Area: 68 sq. ft
Counted as living area: No

Heated: No
Finished: No
Enclosed: No
Contiguous: Yes
Permitted: Yes
Wet space: No
Addition: No
Conversion: No

21510 Maple Street, Matteson, Cook County, Illinois,
United States, 60443

3 Floor 1 - Storage



Dimensions: 7'7" x 9'10"
Area: 74 sq. ft
Counted as living area: No

Heated: No
Finished: No
Enclosed: No
Contiguous: Yes
Permitted: Yes
Wet space: No
Addition: No
Conversion: No

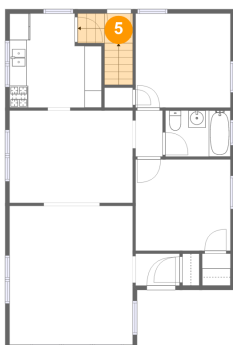
4 Floor 1 - Basement



Dimensions: 25'8" x 38'5"
Area: 751 sq. ft
Counted as living area: No

Heated: Yes
Finished: No
Enclosed: Yes
Contiguous: Yes
Permitted: Yes
Wet space: No
Addition: No
Conversion: No

5 Floor 2 - Entry

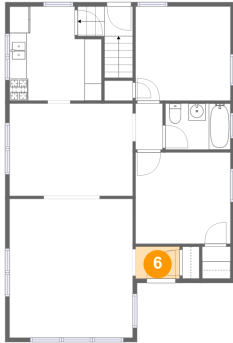


Dimensions: 3'3" x 3'5"
Area: 38 sq. ft
Counted as living area: Yes

Heated: Yes
Finished: Yes
Enclosed: Yes
Contiguous: Yes
Permitted: Yes
Wet space: No
Addition: No
Conversion: No

21510 Maple Street, Matteson, Cook County, Illinois,
United States, 60443

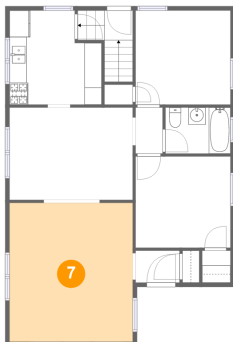
6 Floor 2 - Foyer



Dimensions: 5'1" x 3'8"
Area: 19 sq. ft
Counted as living area: Yes

Heated: Yes
Finished: Yes
Enclosed: Yes
Contiguous: Yes
Permitted: Yes
Wet space: No
Addition: No
Conversion: No

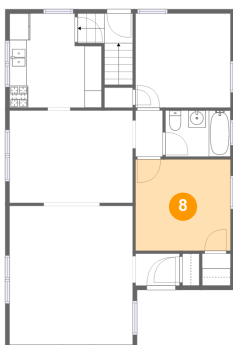
7 Floor 2 - Living Room



Dimensions: 14'4" x 16'1"
Area: 230 sq. ft
Counted as living area: Yes

Heated: Yes
Finished: Yes
Enclosed: Yes
Contiguous: Yes
Permitted: Yes
Wet space: No
Addition: No
Conversion: No

8 Floor 2 - Bedroom

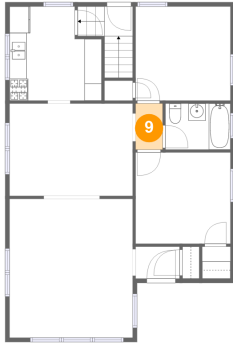


Dimensions: 11'0" x 10'7"
Area: 117 sq. ft
Counted as living area: Yes

Heated: Yes
Finished: Yes
Enclosed: Yes
Contiguous: Yes
Permitted: Yes
Wet space: No
Addition: No
Conversion: No

21510 Maple Street, Matteson, Cook County, Illinois,
United States, 60443

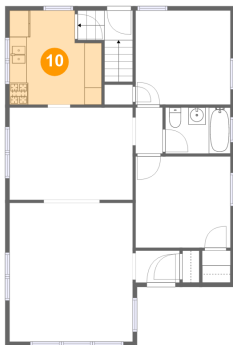
9 Floor 2 - Hall



Dimensions: 3'1" x 5'4"
Area: 17 sq. ft
Counted as living area: Yes

Heated: Yes
Finished: Yes
Enclosed: Yes
Contiguous: Yes
Permitted: Yes
Wet space: No
Addition: No
Conversion: No

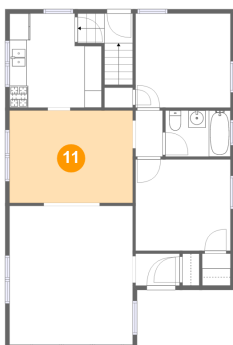
10 Floor 2 - Kitchen



Dimensions: 10'8" x 10'11"
Area: 105 sq. ft
Counted as living area: Yes

Heated: Yes
Finished: Yes
Enclosed: Yes
Contiguous: Yes
Permitted: Yes
Wet space: No
Addition: No
Conversion: No

11 Floor 2 - Dining Room

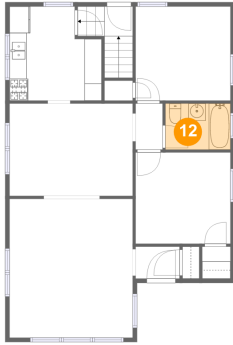


Dimensions: 14'4" x 10'9"
Area: 153 sq. ft
Counted as living area: Yes

Heated: Yes
Finished: Yes
Enclosed: Yes
Contiguous: Yes
Permitted: Yes
Wet space: No
Addition: No
Conversion: No

21510 Maple Street, Matteson, Cook County, Illinois,
United States, 60443

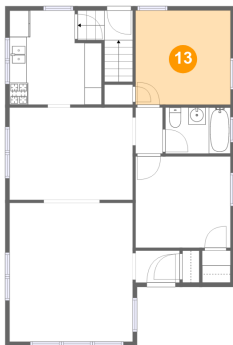
12 Floor 2 - Bath



Dimensions: 7'7" x 5'4"
Area: 40 sq. ft
Counted as living area: Yes

Heated: Yes
Finished: Yes
Enclosed: Yes
Contiguous: Yes
Permitted: Yes
Wet space: Yes
Addition: No
Conversion: No

13 Floor 2 - Primary Bedroom



Dimensions: 11'0" x 10'11"
Area: 120 sq. ft
Counted as living area: Yes

Heated: Yes
Finished: Yes
Enclosed: Yes
Contiguous: Yes
Permitted: Yes
Wet space: No
Addition: No
Conversion: No