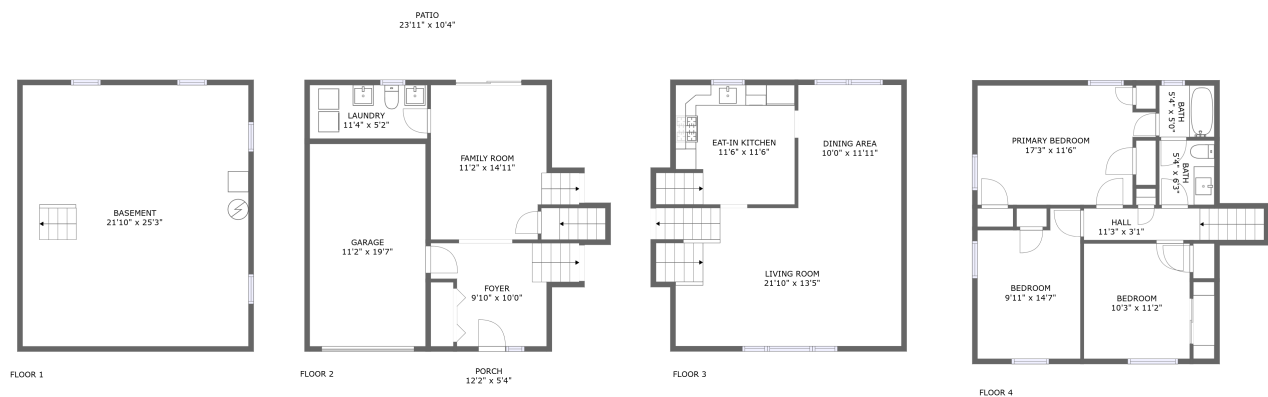
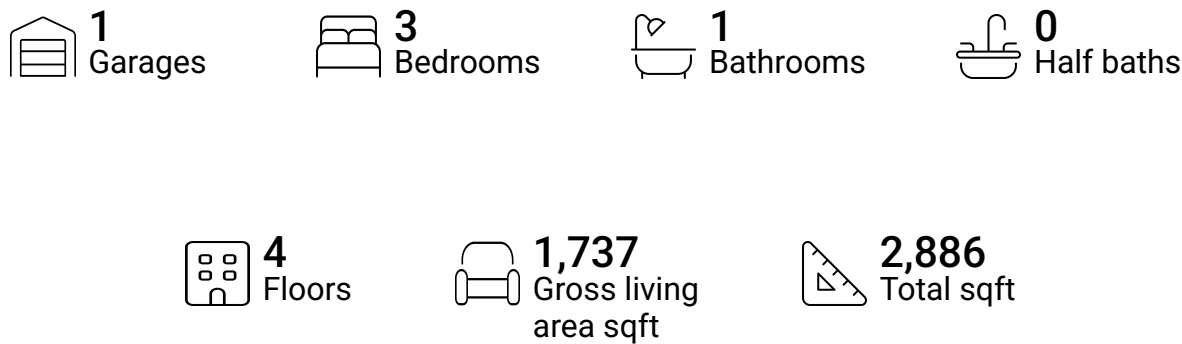


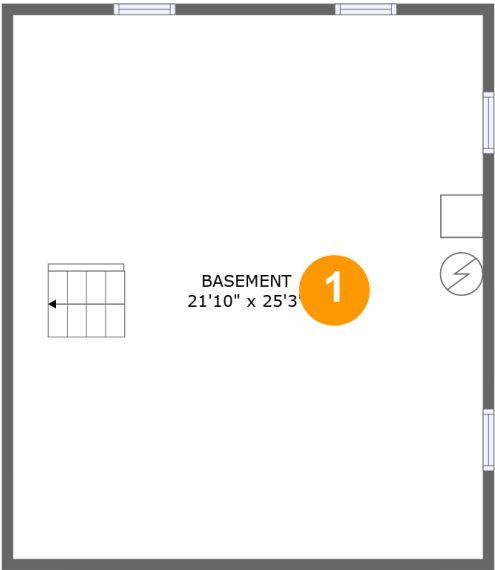
36 Ann Street, Verona, Essex County, New Jersey, United States, 07044



Property summary



36 Ann Street, Verona, Essex County, New Jersey, United States, 07044



Room dimensions

Floor 1 Total sqft: 600 Living area: 0

#		Dimensions	sqft	Counted as living area
1	Basement	21'10" x 25'3"	552 sq. ft	No

36 Ann Street, Verona, Essex County, New Jersey, United States, 07044



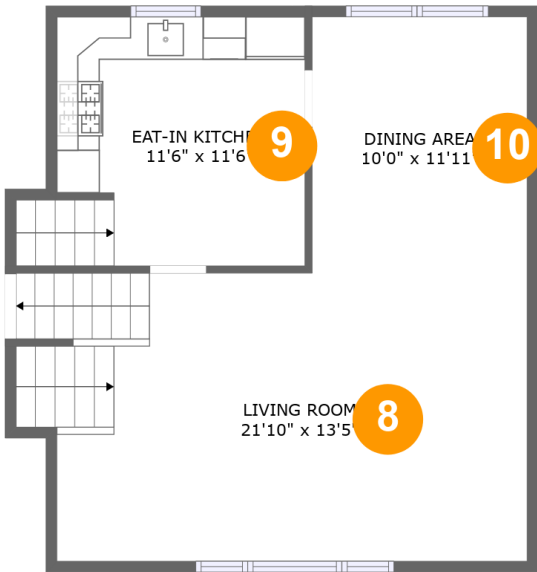
Room dimensions

Floor 2

Total sqft: 989 Living area: 440

#		Dimensions	sqft	Counted as living area
2	Outdoor	12'2" x 5'4"	65 sq. ft	No
3	Outdoor	23'11" x 10'4"	249 sq. ft	No
4	Entry	9'10" x 10'0"	107 sq. ft	Yes
5	Garage	11'2" x 19'7"	219 sq. ft	No
6	Living Room	11'2" x 14'11"	174 sq. ft	Yes
7	Utility	11'4" x 5'2"	59 sq. ft	Yes

36 Ann Street, Verona, Essex County, New Jersey, United States, 07044

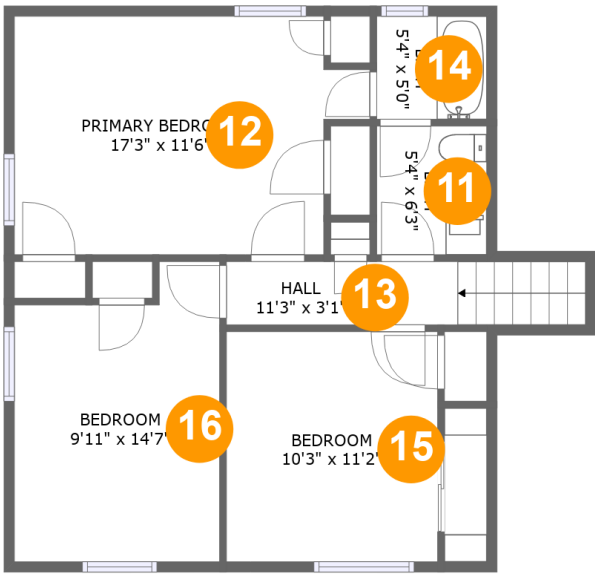


Room dimensions

Floor 3 Total sqft: 622 Living area: 622

#		Dimensions	sqft	Counted as living area
8	Living Room	21'10" x 13'5"	305 sq. ft	Yes
9	Kitchen	11'6" x 11'6"	138 sq. ft	Yes
10	Dining Room	10'0" x 11'11"	119 sq. ft	Yes

36 Ann Street, Verona, Essex County, New Jersey, United States, 07044



Room dimensions

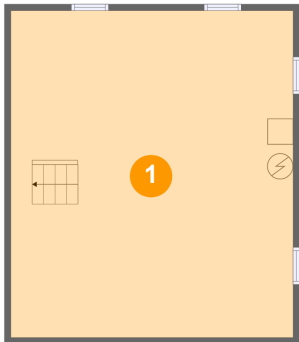
Floor 4

Total sqft: 675 Living area: 675

#		Dimensions	sqft	Counted as living area
11	Bath	5'4" x 6'3"	33 sq. ft	Yes
12	Bedroom	17'3" x 11'6"	179 sq. ft	Yes
13	Hall	11'3" x 3'1"	53 sq. ft	Yes
14	Bath	5'4" x 5'0"	27 sq. ft	Yes
15	Bedroom	10'3" x 11'2"	114 sq. ft	Yes
16	Bedroom	9'11" x 14'7"	130 sq. ft	Yes

36 Ann Street, Verona, Essex County, New Jersey, United States, 07044

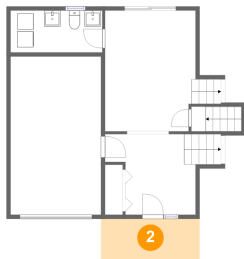
1 Floor 1 - Basement



Dimensions: 21'10" x 25'3"
Area: 552 sq. ft
Counted as living area: No

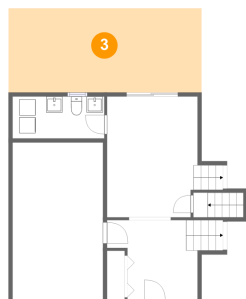
Heated: No
Finished: No
Enclosed: Yes
Contiguous: Yes
Permitted: Yes
Wet space: No
Addition: No
Conversion: No

2 Floor 2 - Outdoor



Dimensions: 12'2" x 5'4"
Area: 65 sq. ft
Counted as living area: No

Heated: No
Finished: Yes
Enclosed: No
Contiguous: Yes
Permitted: Yes
Wet space: No
Addition: No
Conversion: No

36 Ann Street, Verona, Essex County, New Jersey, United States, 07044**3 Floor 2 - Outdoor**

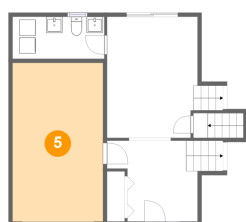
Dimensions: 23'11" x 10'4"
Area: 249 sq. ft
Counted as living area: No

Heated: No
Finished: Yes
Enclosed: No
Contiguous: Yes
Permitted: Yes
Wet space: No
Addition: No
Conversion: No

4 Floor 2 - Entry

Dimensions: 9'10" x 10'0"
Area: 107 sq. ft
Counted as living area: Yes

Heated: Yes
Finished: Yes
Enclosed: Yes
Contiguous: Yes
Permitted: Yes
Wet space: No
Addition: No
Conversion: No

5 Floor 2 - Garage

Dimensions: 11'2" x 19'7"
Area: 219 sq. ft
Counted as living area: No

Heated: No
Finished: No
Enclosed: Yes
Contiguous: Yes
Permitted: Yes
Wet space: No
Addition: No
Conversion: No

36 Ann Street, Verona, Essex County, New Jersey, United States, 07044

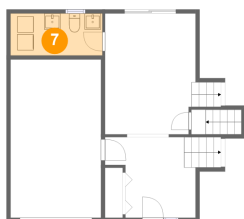
6 Floor 2 - Living Room



Dimensions: 11'2" x 14'11"
Area: 174 sq. ft
Counted as living area: Yes

Heated: Yes
Finished: Yes
Enclosed: Yes
Contiguous: Yes
Permitted: Yes
Wet space: No
Addition: No
Conversion: No

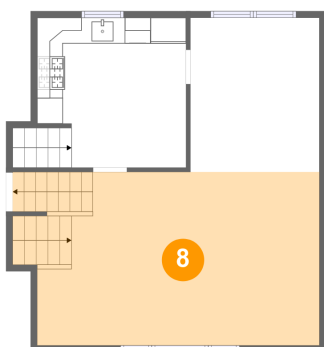
7 Floor 2 - Utility



Dimensions: 11'4" x 5'2"
Area: 59 sq. ft
Counted as living area: Yes

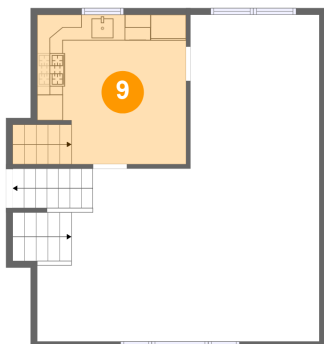
Heated: Yes
Finished: Yes
Enclosed: Yes
Contiguous: Yes
Permitted: Yes
Wet space: No
Addition: No
Conversion: No

8 Floor 3 - Living Room



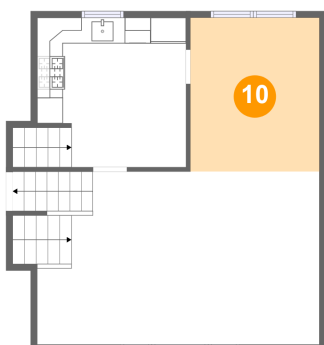
Dimensions: 21'10" x 13'5"
Area: 305 sq. ft
Counted as living area: Yes

Heated: Yes
Finished: Yes
Enclosed: Yes
Contiguous: Yes
Permitted: Yes
Wet space: No
Addition: No
Conversion: No

36 Ann Street, Verona, Essex County, New Jersey, United States, 07044**9 Floor 3 - Kitchen**

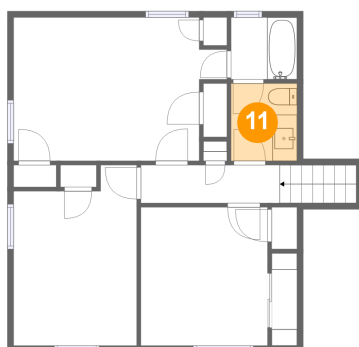
Dimensions: 11'6" x 11'6"
Area: 138 sq. ft
Counted as living area: Yes

Heated: Yes
Finished: Yes
Enclosed: Yes
Contiguous: Yes
Permitted: Yes
Wet space: No
Addition: No
Conversion: No

10 Floor 3 - Dining Room

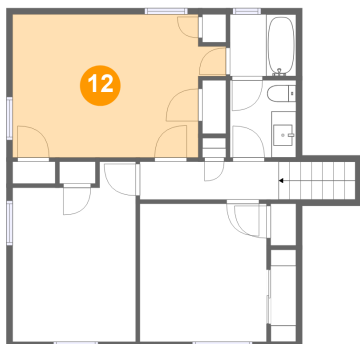
Dimensions: 10'0" x 11'11"
Area: 119 sq. ft
Counted as living area: Yes

Heated: Yes
Finished: Yes
Enclosed: Yes
Contiguous: Yes
Permitted: Yes
Wet space: No
Addition: No
Conversion: No

11 Floor 4 - Bath

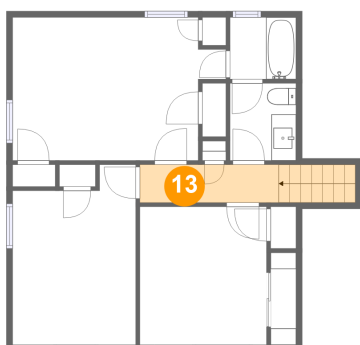
Dimensions: 5'4" x 6'3"
Area: 33 sq. ft
Counted as living area: Yes

Heated: Yes
Finished: Yes
Enclosed: Yes
Contiguous: Yes
Permitted: Yes
Wet space: Yes
Addition: No
Conversion: No

36 Ann Street, Verona, Essex County, New Jersey, United States, 07044**12 Floor 4 - Bedroom**

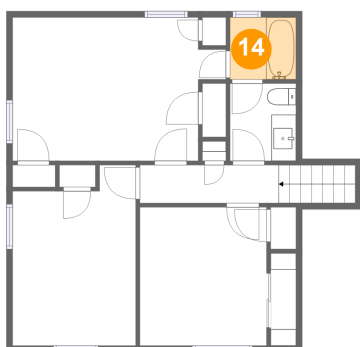
Dimensions: 17'3" x 11'6"
Area: 179 sq. ft
Counted as living area: Yes

Heated: Yes
Finished: Yes
Enclosed: Yes
Contiguous: Yes
Permitted: Yes
Wet space: No
Addition: No
Conversion: No

13 Floor 4 - Hall

Dimensions: 11'3" x 3'1"
Area: 53 sq. ft
Counted as living area: Yes

Heated: Yes
Finished: Yes
Enclosed: Yes
Contiguous: Yes
Permitted: Yes
Wet space: No
Addition: No
Conversion: No

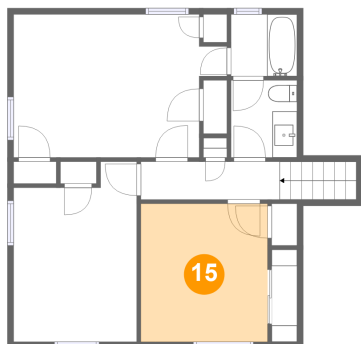
14 Floor 4 - Bath

Dimensions: 5'4" x 5'0"
Area: 27 sq. ft
Counted as living area: Yes

Heated: Yes
Finished: Yes
Enclosed: Yes
Contiguous: Yes
Permitted: Yes
Wet space: Yes
Addition: No
Conversion: No

**36 Ann Street, Verona, Essex County, New
Jersey, United States, 07044**

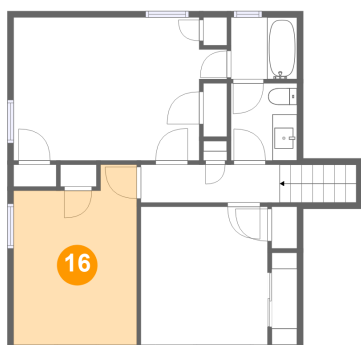
15 Floor 4 - Bedroom



Dimensions: 10'3" x 11'2"
Area: 114 sq. ft
Counted as living area: Yes

Heated: Yes
Finished: Yes
Enclosed: Yes
Contiguous: Yes
Permitted: Yes
Wet space: No
Addition: No
Conversion: No

16 Floor 4 - Bedroom



Dimensions: 9'11" x 14'7"
Area: 130 sq. ft
Counted as living area: Yes

Heated: Yes
Finished: Yes
Enclosed: Yes
Contiguous: Yes
Permitted: Yes
Wet space: No
Addition: No
Conversion: No