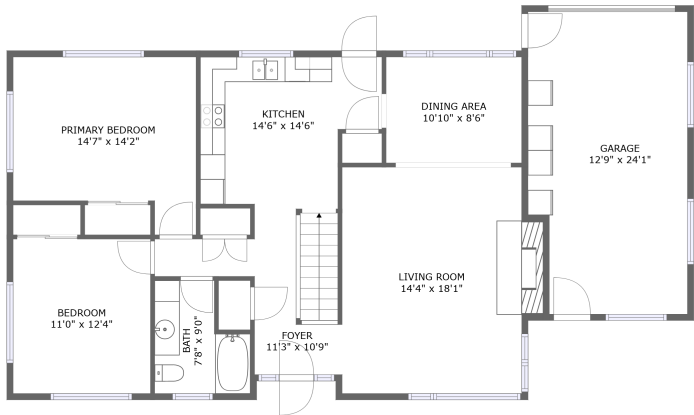
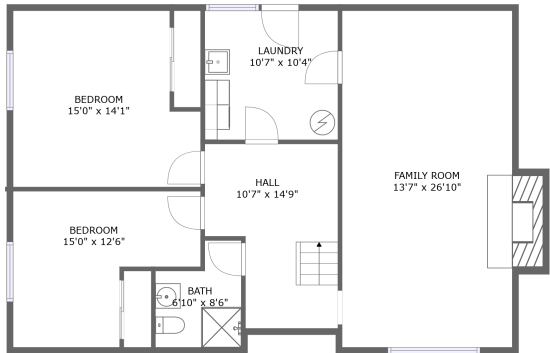


Home report

4909 Wilmington Avenue, Glacier View, Everett, Snohomish County, Washington, United States, 98203





FLOOR 2




FLOOR 1

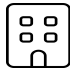
Property summary


 **1** Garages


 **4** Bedrooms

 **2** Bathrooms

 **0** Half baths

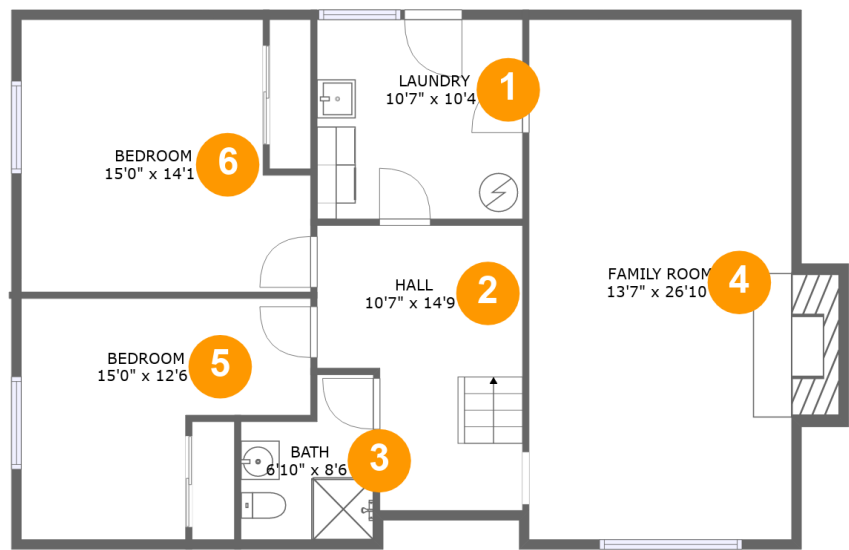
 **2** Floors

 **2,276** Gross living area sqft

 **2,631** Total sqft

Home report

4909 Wilmington Avenue, Glacier View, Everett, Snohomish County, Washington, United States, 98203



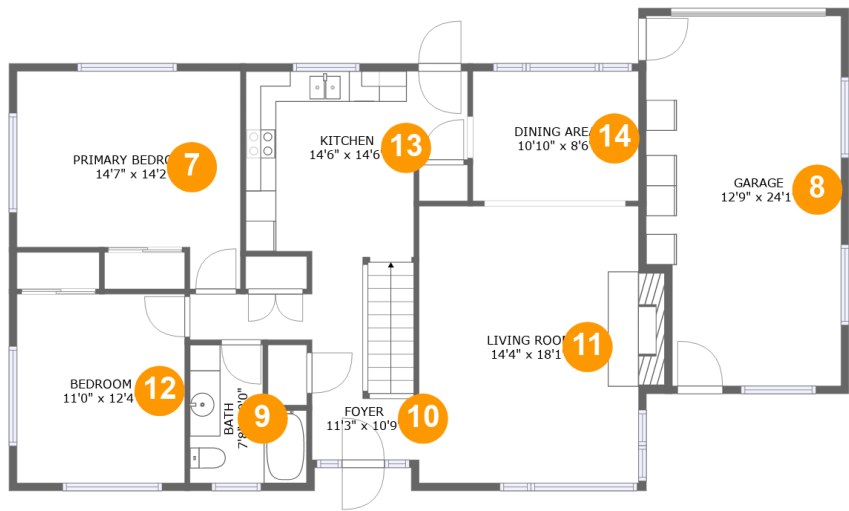
Room dimensions

Floor 1 Total sqft: 1148 Living area: 1127

#		Dimensions	sqft	Counted as living area
1	Laundry	10'7" x 10'4"	109 sq. ft	Yes
2	Hall	10'7" x 14'9"	133 sq. ft	Yes
3	Bath	6'10" x 8'6"	49 sq. ft	Yes
4	Family Room	13'7" x 26'10"	383 sq. ft	Yes
5	Bedroom	15'0" x 12'6"	145 sq. ft	Yes
6	Bedroom	15'0" x 14'1"	191 sq. ft	Yes

Home report

4909 Wilmington Avenue, Glacier View, Everett, Snohomish County, Washington, United States, 98203



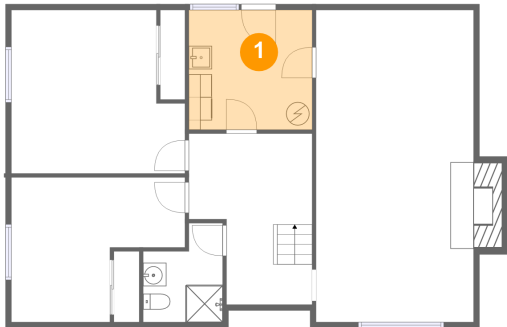
Room dimensions

Floor 2 Total sqft: 1483 Living area: 1149

#		Dimensions	sqft	Counted as living area
7	Primary Bedroom	14'7" x 14'2"	177 sq. ft	Yes
8	Garage	12'9" x 24'1"	294 sq. ft	No
9	Bath	7'8" x 9'0"	57 sq. ft	Yes
10	Foyer	11'3" x 10'9"	97 sq. ft	Yes
11	Living Room	14'4" x 18'1"	272 sq. ft	Yes
12	Bedroom	11'0" x 12'4"	135 sq. ft	Yes
13	Kitchen	14'6" x 14'6"	169 sq. ft	Yes
14	Dining Area	10'10" x 8'6"	92 sq. ft	Yes

4909 Wilmington Avenue, Glacier View, Everett, Snohomish County, Washington, United States, 98203

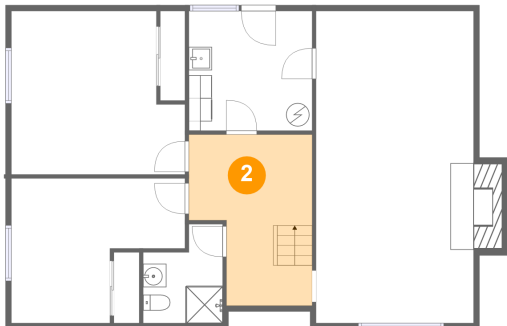
1 Floor 1 - Laundry



Dimensions: 10'7" x 10'4"
Area: 109 sq. ft
Counted as living area: Yes

Heated: Yes
Finished: Yes
Enclosed: Yes
Contiguous: Yes
Permitted: Yes
Wet space: No
Addition: No
Conversion: No

2 Floor 1 - Hall



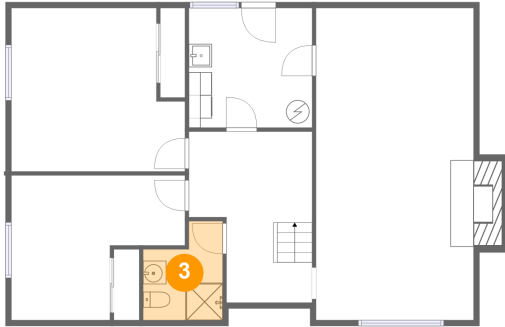
Dimensions: 10'7" x 14'9"
Area: 133 sq. ft
Counted as living area: Yes

Heated: Yes
Finished: Yes
Enclosed: Yes
Contiguous: Yes
Permitted: Yes
Wet space: No
Addition: No
Conversion: No

Home report

4909 Wilmington Avenue, Glacier View, Everett, Snohomish County, Washington, United States, 98203

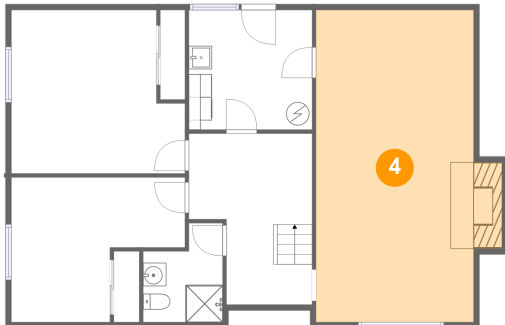
3 Floor 1 - Bath



Dimensions: 6'10" x 8'6"
Area: 49 sq. ft
Counted as living area: Yes

Heated: Yes
Finished: Yes
Enclosed: Yes
Contiguous: Yes
Permitted: Yes
Wet space: Yes
Addition: No
Conversion: No

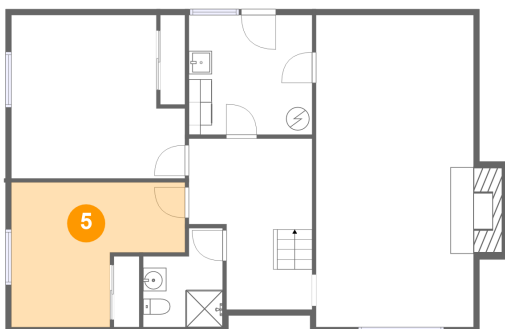
4 Floor 1 - Family Room



Dimensions: 13'7" x 26'10"
Area: 383 sq. ft
Counted as living area: Yes

Heated: Yes
Finished: Yes
Enclosed: Yes
Contiguous: Yes
Permitted: Yes
Wet space: No
Addition: No
Conversion: No

5 Floor 1 - Bedroom



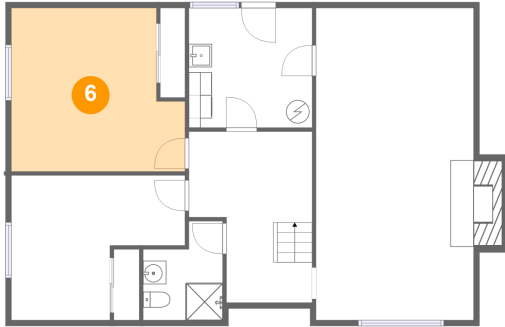
Dimensions: 15'0" x 12'6"
Area: 145 sq. ft
Counted as living area: Yes

Heated: Yes
Finished: Yes
Enclosed: Yes
Contiguous: Yes
Permitted: Yes
Wet space: No
Addition: No
Conversion: No

Home report

4909 Wilmington Avenue, Glacier View, Everett, Snohomish County, Washington, United States, 98203

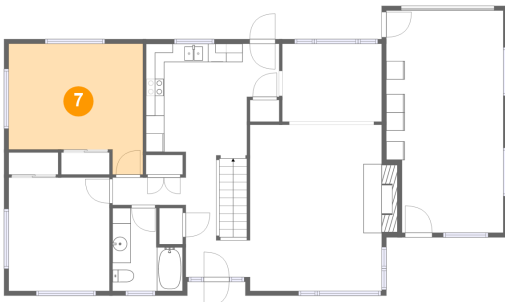
6 Floor 1 - Bedroom



Dimensions: 15'0" x 14'1"
Area: 191 sq. ft
Counted as living area: Yes

Heated: Yes
Finished: Yes
Enclosed: Yes
Contiguous: Yes
Permitted: Yes
Wet space: No
Addition: No
Conversion: No

7 Floor 2 - Primary Bedroom



Dimensions: 14'7" x 14'2"
Area: 177 sq. ft
Counted as living area: Yes

Heated: Yes
Finished: Yes
Enclosed: Yes
Contiguous: Yes
Permitted: Yes
Wet space: No
Addition: No
Conversion: No

8 Floor 2 - Garage



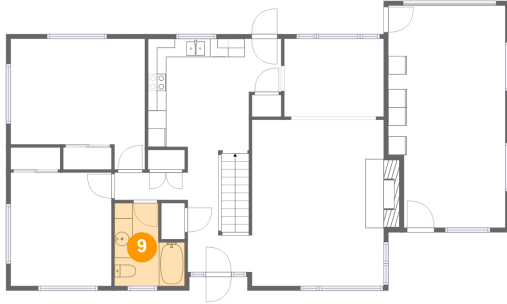
Dimensions: 12'9" x 24'1"
Area: 294 sq. ft
Counted as living area: No

Heated: No
Finished: No
Enclosed: Yes
Contiguous: Yes
Permitted: Yes
Wet space: No
Addition: No
Conversion: No

Home report

4909 Wilmington Avenue, Glacier View, Everett, Snohomish County, Washington, United States, 98203

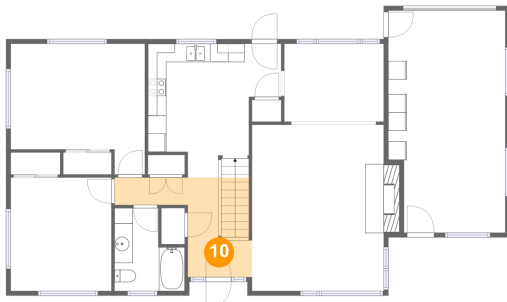
9 Floor 2 - Bath



Dimensions: 7'8" x 9'0"
Area: 57 sq. ft
Counted as living area: Yes

Heated: Yes
Finished: Yes
Enclosed: Yes
Contiguous: Yes
Permitted: Yes
Wet space: Yes
Addition: No
Conversion: No

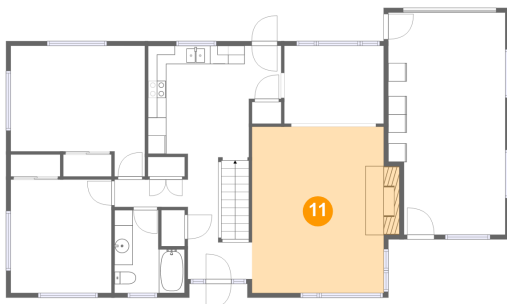
10 Floor 2 - Foyer



Dimensions: 11'3" x 10'9"
Area: 97 sq. ft
Counted as living area: Yes

Heated: Yes
Finished: Yes
Enclosed: Yes
Contiguous: Yes
Permitted: Yes
Wet space: No
Addition: No
Conversion: No

11 Floor 2 - Living Room



Dimensions: 14'4" x 18'1"
Area: 272 sq. ft
Counted as living area: Yes

Heated: Yes
Finished: Yes
Enclosed: Yes
Contiguous: Yes
Permitted: Yes
Wet space: No
Addition: No
Conversion: No

Home report

4909 Wilmington Avenue, Glacier View, Everett, Snohomish County, Washington, United States, 98203

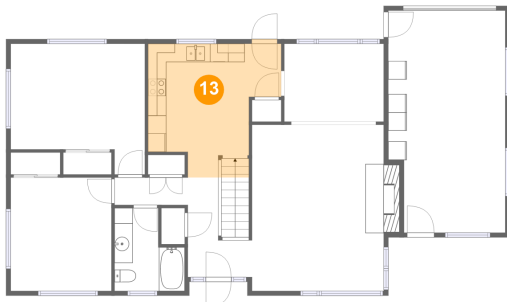
12 Floor 2 - Bedroom



Dimensions: 11'0" x 12'4"
Area: 135 sq. ft
Counted as living area: Yes

Heated: Yes
Finished: Yes
Enclosed: Yes
Contiguous: Yes
Permitted: Yes
Wet space: No
Addition: No
Conversion: No

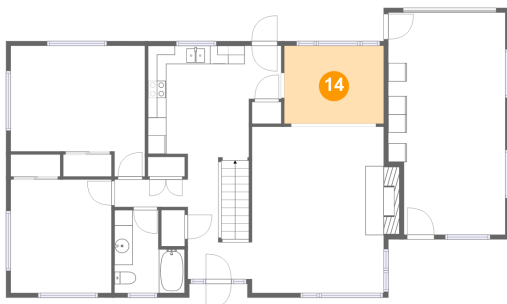
13 Floor 2 - Kitchen



Dimensions: 14'6" x 14'6"
Area: 169 sq. ft
Counted as living area: Yes

Heated: Yes
Finished: Yes
Enclosed: Yes
Contiguous: Yes
Permitted: Yes
Wet space: No
Addition: No
Conversion: No

14 Floor 2 - Dining Area



Dimensions: 10'10" x 8'6"
Area: 92 sq. ft
Counted as living area: Yes

Heated: Yes
Finished: Yes
Enclosed: Yes
Contiguous: Yes
Permitted: Yes
Wet space: No
Addition: No
Conversion: No