

5223 Hawthorne Road Northwest, Preston Park, Roanoke, Roanoke city, Virginia, United States, 24012



Property summary

 **0** Garages

 **3** Bedrooms

 **2** Bathrooms

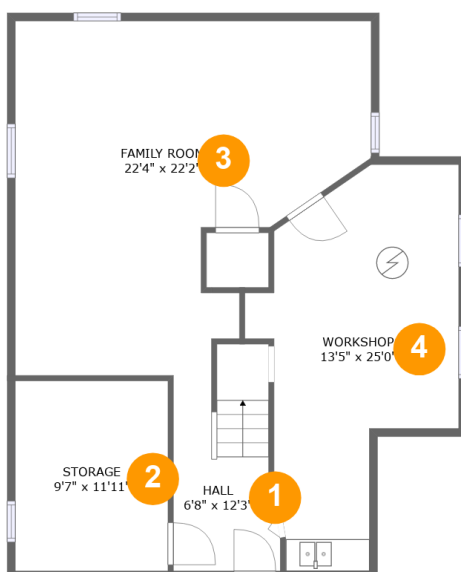
 **0** Half baths

 **3** Floors

 **2,008** Gross living area sqft

 **2,754** Total sqft

5223 Hawthorne Road Northwest, Preston Park, Roanoke, Roanoke city, Virginia, United States, 24012



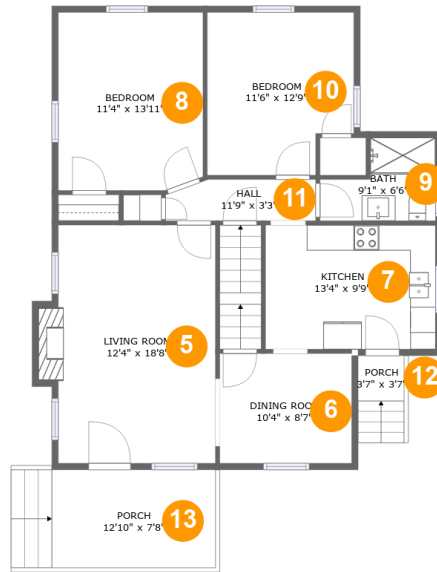
Room dimensions

Floor 1

Total sqft: 921 Living area: 538

#		Dimensions	sqft	Counted as living area
1	Hall	6'8" x 12'3"	82 sq. ft	Yes
2	Storage	9'7" x 11'11"	114 sq. ft	No
3	Family Room	22'4" x 22'2"	391 sq. ft	Yes
4	Workshop	13'5" x 25'0"	234 sq. ft	No

5223 Hawthorne Road Northwest, Preston Park, Roanoke, Roanoke city, Virginia, United States, 24012



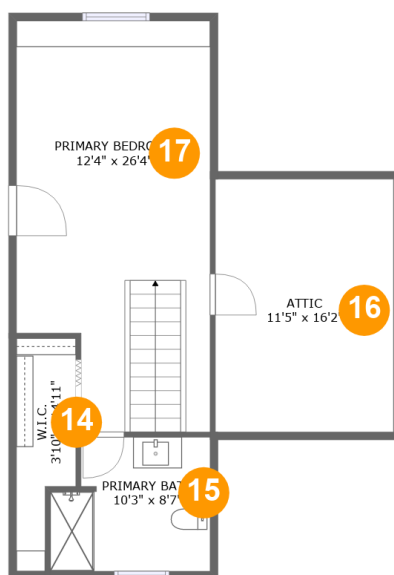
Room dimensions

Floor 2

Total sqft: 1144 Living area: 986

#		Dimensions	sqft	Counted as living area
5	Living Room	12'4" x 18'8"	238 sq. ft	Yes
6	Dining Room	10'4" x 8'7"	89 sq. ft	Yes
7	Kitchen	13'4" x 9'9"	129 sq. ft	Yes
8	Bedroom	11'4" x 13'11"	156 sq. ft	Yes
9	Bath	9'1" x 6'6"	46 sq. ft	Yes
10	Bedroom	11'6" x 12'9"	136 sq. ft	Yes
11	Hall	11'9" x 3'3"	36 sq. ft	Yes
12	Porch	3'7" x 3'7"	25 sq. ft	No
13	Porch	12'10" x 7'8"	123 sq. ft	No

5223 Hawthorne Road Northwest, Preston Park, Roanoke, Roanoke city, Virginia, United States, 24012



Room dimensions

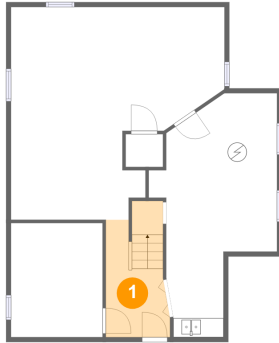
Floor 3

Total sqft: 689 Living area: 484

#		Dimensions	sqft	Counted as living area
14	W.I.C.	3'10" x 14'11"	46 sq. ft	Yes
15	Primary Bath	10'3" x 8'7"	81 sq. ft	Yes
16	Attic	11'5" x 16'2"	77 sq. ft	No
17	Primary Bedroom	12'4" x 26'4"	301 sq. ft	Yes

5223 Hawthorne Road Northwest, Preston Park, Roanoke, Roanoke city, Virginia, United States, 24012

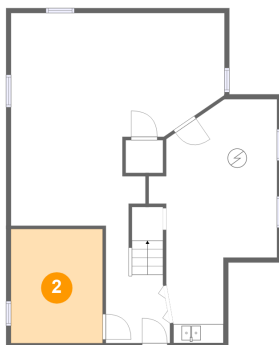
1 Floor 1 - Hall



Dimensions: 6'8" x 12'3"
Area: 82 sq. ft
Counted as living area: Yes

Heated: Yes
Finished: Yes
Enclosed: Yes
Contiguous: Yes
Permitted: Yes
Wet space: No
Addition: No
Conversion: No

2 Floor 1 - Storage

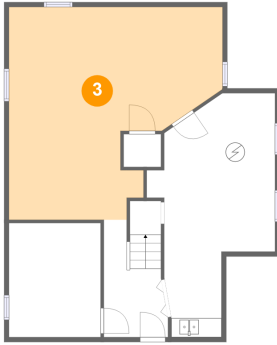


Dimensions: 9'7" x 11'11"
Area: 114 sq. ft
Counted as living area: No

Heated: No
Finished: No
Enclosed: No
Contiguous: No
Permitted: Yes
Wet space: No
Addition: No
Conversion: No

5223 Hawthorne Road Northwest, Preston Park, Roanoke, Roanoke city, Virginia, United States, 24012

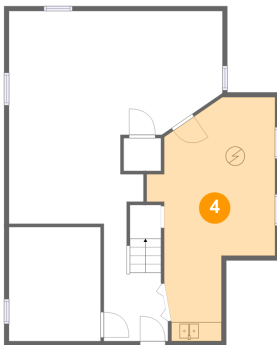
3 Floor 1 - Family Room



Dimensions: 22'4" x 22'2"
Area: 391 sq. ft
Counted as living area: Yes

Heated: Yes
Finished: Yes
Enclosed: Yes
Contiguous: Yes
Permitted: Yes
Wet space: No
Addition: No
Conversion: No

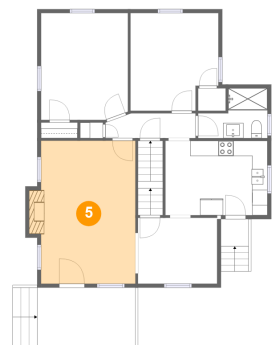
4 Floor 1 - Workshop



Dimensions: 13'5" x 25'0"
Area: 234 sq. ft
Counted as living area: No

Heated: No
Finished: No
Enclosed: Yes
Contiguous: No
Permitted: Yes
Wet space: No
Addition: No
Conversion: No

5 Floor 2 - Living Room

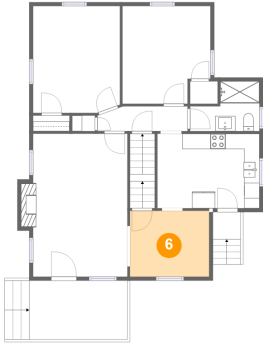


Dimensions: 12'4" x 18'8"
Area: 238 sq. ft
Counted as living area: Yes

Heated: Yes
Finished: Yes
Enclosed: Yes
Contiguous: Yes
Permitted: Yes
Wet space: No
Addition: No
Conversion: No

5223 Hawthorne Road Northwest, Preston Park, Roanoke, Roanoke city, Virginia, United States, 24012

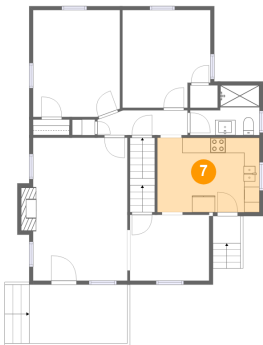
6 Floor 2 - Dining Room



Dimensions: 10'4" x 8'7"
Area: 89 sq. ft
Counted as living area: Yes

Heated: Yes
Finished: Yes
Enclosed: Yes
Contiguous: Yes
Permitted: Yes
Wet space: No
Addition: No
Conversion: No

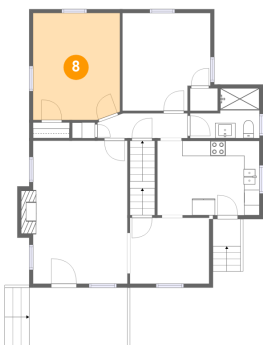
7 Floor 2 - Kitchen



Dimensions: 13'4" x 9'9"
Area: 129 sq. ft
Counted as living area: Yes

Heated: Yes
Finished: Yes
Enclosed: Yes
Contiguous: Yes
Permitted: Yes
Wet space: No
Addition: No
Conversion: No

8 Floor 2 - Bedroom

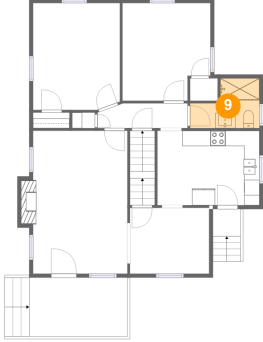


Dimensions: 11'4" x 13'11"
Area: 156 sq. ft
Counted as living area: Yes

Heated: Yes
Finished: Yes
Enclosed: Yes
Contiguous: Yes
Permitted: Yes
Wet space: No
Addition: No
Conversion: No

5223 Hawthorne Road Northwest, Preston Park, Roanoke, Roanoke city, Virginia, United States, 24012

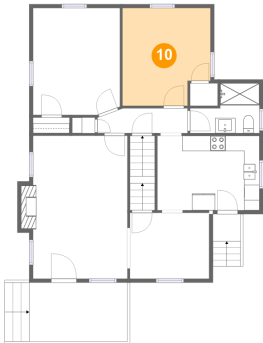
9 Floor 2 - Bath



Dimensions: 9'1" x 6'6"
Area: 46 sq. ft
Counted as living area: Yes

Heated: Yes
Finished: Yes
Enclosed: Yes
Contiguous: Yes
Permitted: Yes
Wet space: Yes
Addition: No
Conversion: No

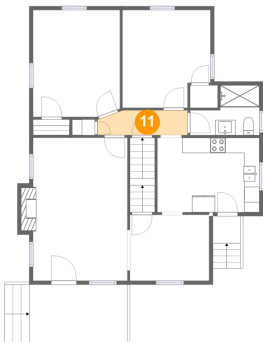
10 Floor 2 - Bedroom



Dimensions: 11'6" x 12'9"
Area: 136 sq. ft
Counted as living area: Yes

Heated: Yes
Finished: Yes
Enclosed: Yes
Contiguous: Yes
Permitted: Yes
Wet space: No
Addition: No
Conversion: No

11 Floor 2 - Hall

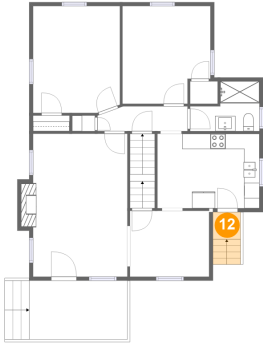


Dimensions: 11'9" x 3'3"
Area: 36 sq. ft
Counted as living area: Yes

Heated: Yes
Finished: Yes
Enclosed: Yes
Contiguous: Yes
Permitted: Yes
Wet space: No
Addition: No
Conversion: No

5223 Hawthorne Road Northwest, Preston Park, Roanoke, Roanoke city, Virginia, United States, 24012

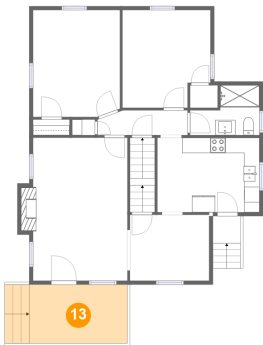
12 Floor 2 - Porch



Dimensions: 3'7" x 3'7"
Area: 25 sq. ft
Counted as living area: No

Heated: No
Finished: Yes
Enclosed: No
Contiguous: Yes
Permitted: Yes
Wet space: No
Addition: No
Conversion: No

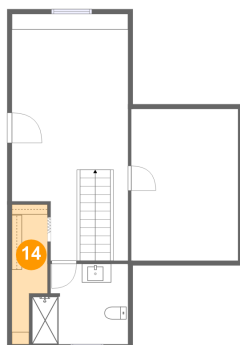
13 Floor 2 - Porch



Dimensions: 12'10" x 7'8"
Area: 123 sq. ft
Counted as living area: No

Heated: No
Finished: Yes
Enclosed: No
Contiguous: Yes
Permitted: Yes
Wet space: No
Addition: No
Conversion: No

14 Floor 3 - W.I.C.

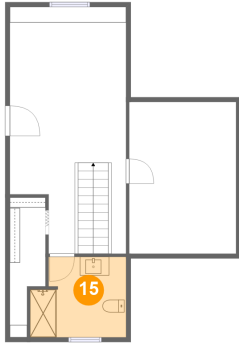


Dimensions: 3'10" x 14'11"
Area: 46 sq. ft
Counted as living area: Yes

Heated: Yes
Finished: Yes
Enclosed: Yes
Contiguous: Yes
Permitted: Yes
Wet space: No
Addition: No
Conversion: No

5223 Hawthorne Road Northwest, Preston Park, Roanoke, Roanoke city, Virginia, United States, 24012

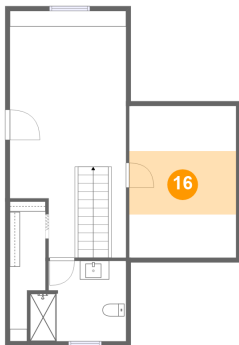
15 Floor 3 - Primary Bath



Dimensions: 10'3" x 8'7"
Area: 81 sq. ft
Counted as living area: Yes

Heated: Yes
Finished: Yes
Enclosed: Yes
Contiguous: Yes
Permitted: Yes
Wet space: Yes
Addition: No
Conversion: No

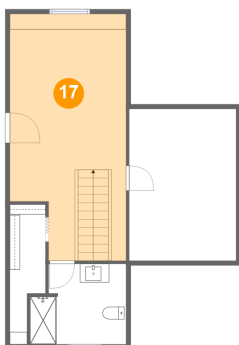
16 Floor 3 - Attic



Dimensions: 11'5" x 16'2"
Area: 77 sq. ft
Counted as living area: No

Heated: No
Finished: No
Enclosed: Yes
Contiguous: Yes
Permitted: Yes
Wet space: No
Addition: No
Conversion: No

17 Floor 3 - Primary Bedroom



Dimensions: 12'4" x 26'4"
Area: 301 sq. ft
Counted as living area: Yes

Heated: Yes
Finished: Yes
Enclosed: Yes
Contiguous: Yes
Permitted: Yes
Wet space: No
Addition: No
Conversion: No