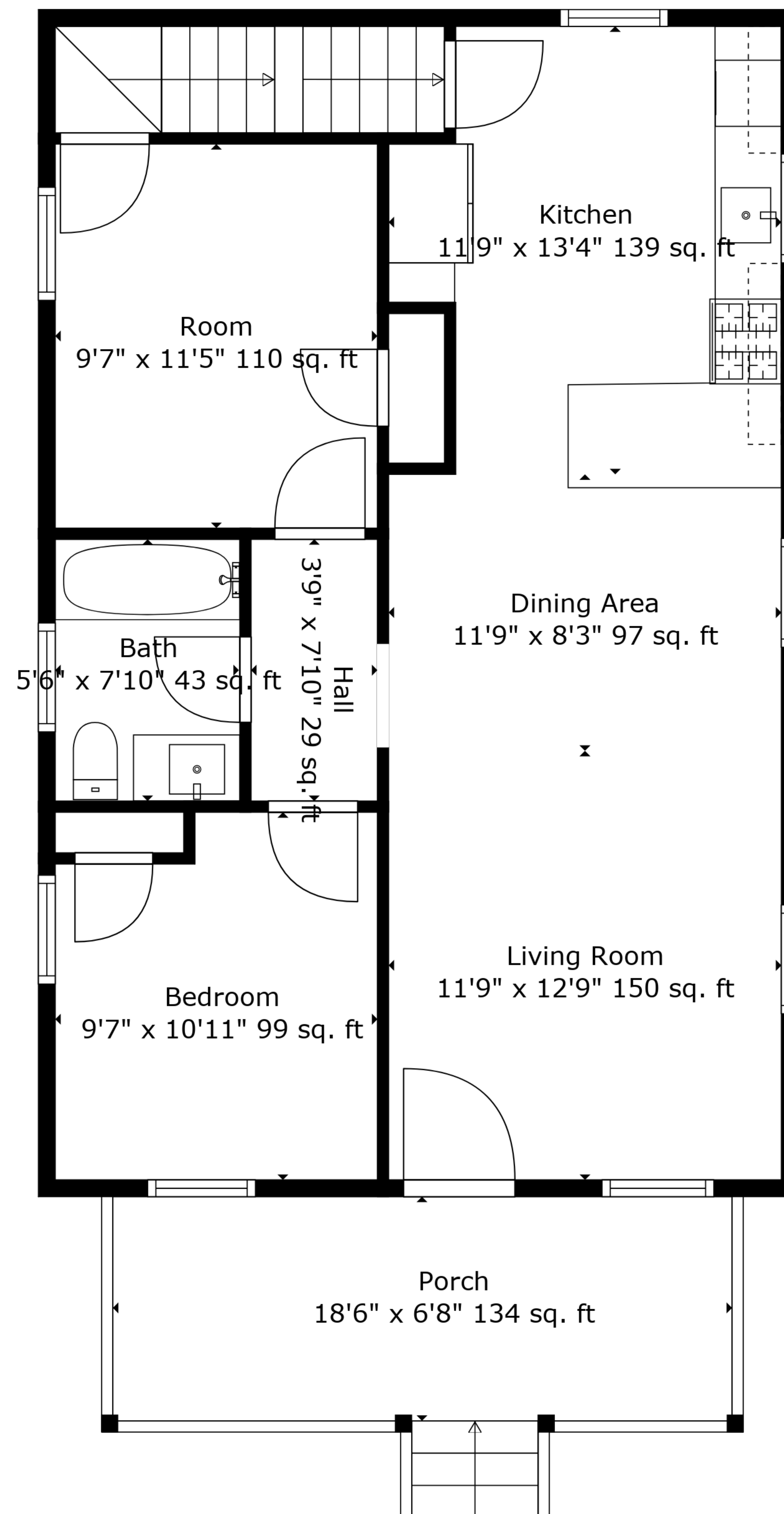


Basement
19'9" x 32'5" 641 sq. ft

TOTAL: 960 sq. ft
BELOW GROUND: 0 sq. ft, FLOOR 2: 744 sq. ft, FLOOR 3: 216 sq. ft
EXCLUDED AREAS: BASEMENT: 641 sq. ft, PORCH: 134 sq. ft, LOW CEILING: 122 sq. ft
WALLS: 156 sq. ft

Floor Plan Created By Phocasa Llc. Measurements Deemed Highly Reliable But Not Guaranteed.



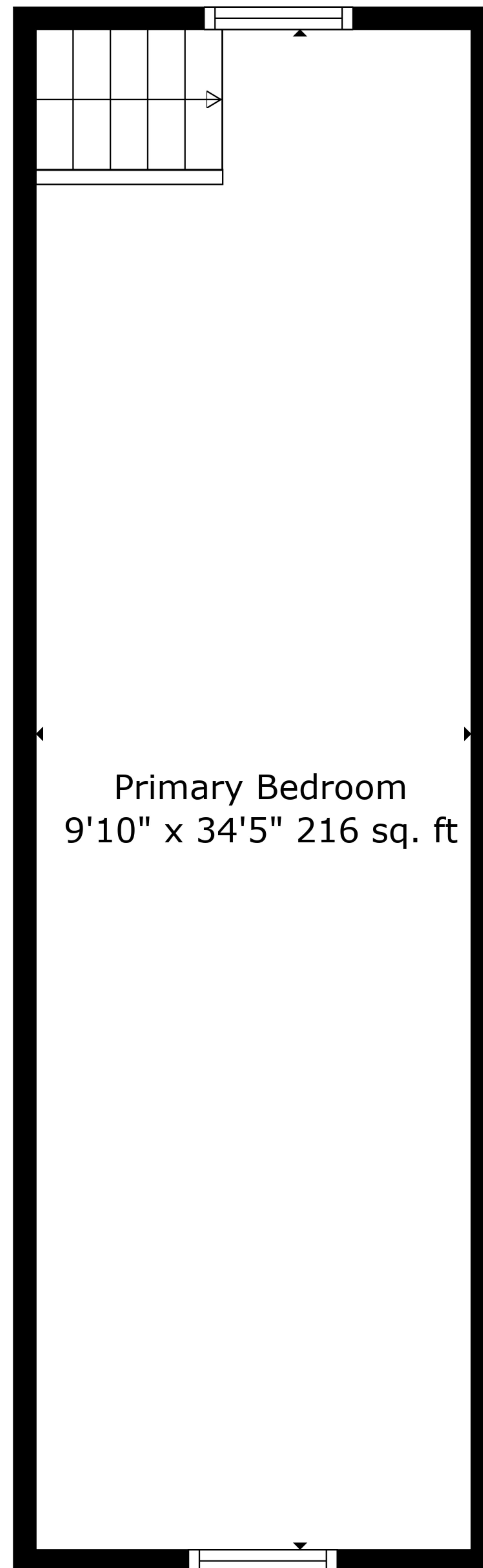


TOTAL: 960 sq. ft

BELOW GROUND: 0 sq. ft, FLOOR 2: 744 sq. ft, FLOOR 3: 216 sq. ft
EXCLUDED AREAS: BASEMENT: 641 sq. ft, PORCH: 134 sq. ft, LOW CEILING: 122 sq. ft
WALLS: 156 sq. ft

Floor Plan Created By Phocasa Llc. Measurements Deemed Highly Reliable But Not Guaranteed.

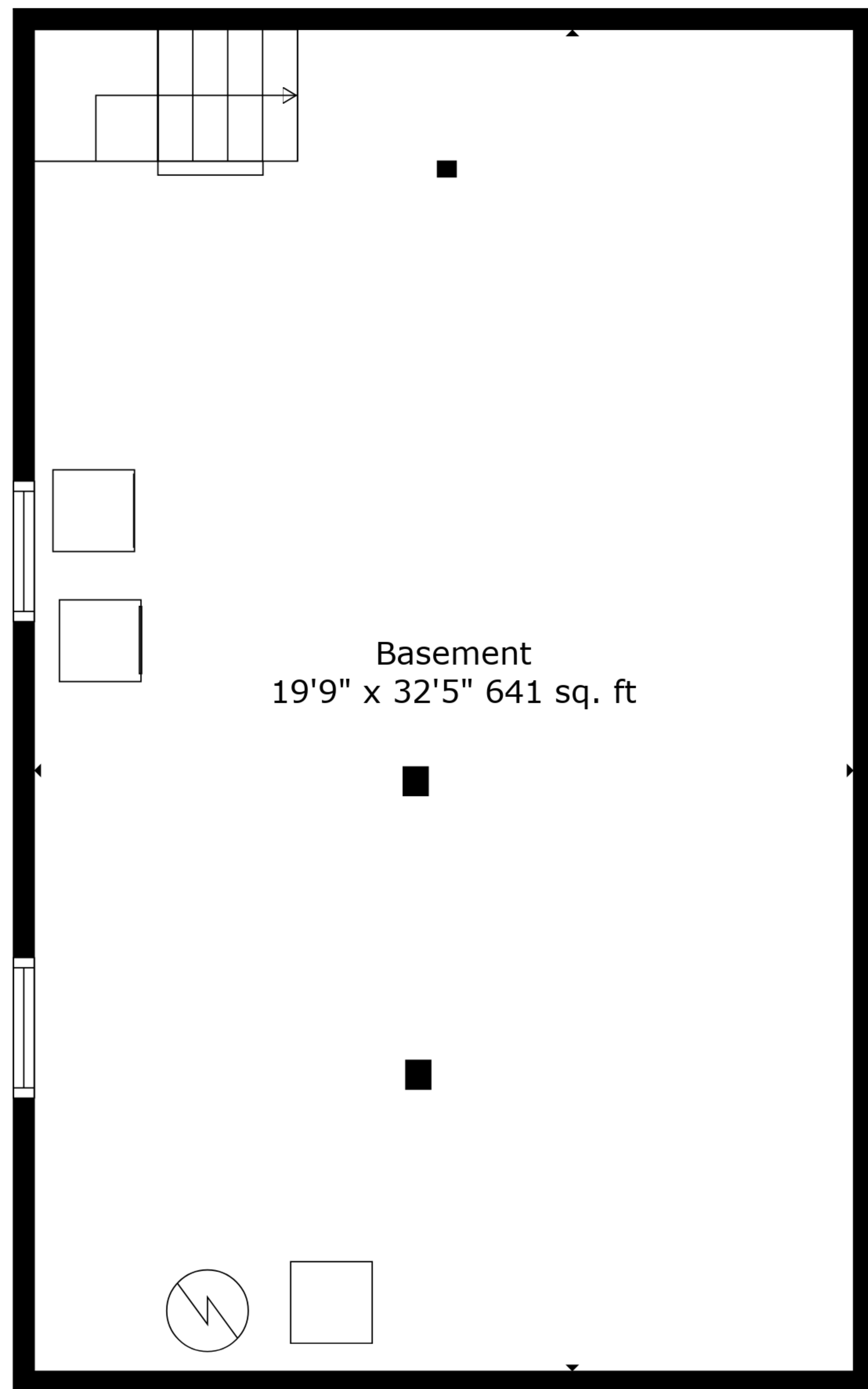




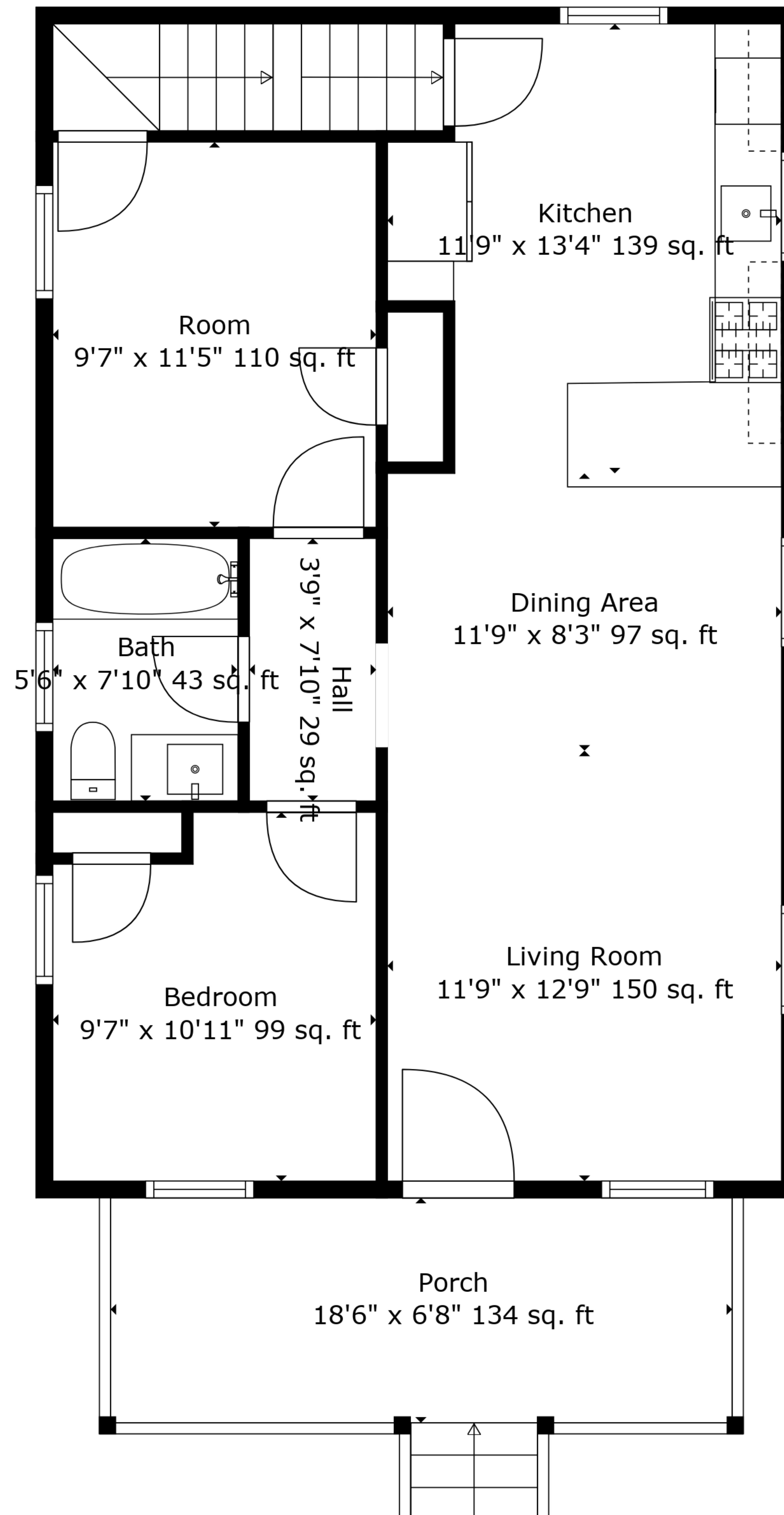
TOTAL: 960 sq. ft

BELOW GROUND: 0 sq. ft, FLOOR 2: 744 sq. ft, FLOOR 3: 216 sq. ft
EXCLUDED AREAS: BASEMENT: 641 sq. ft, PORCH: 134 sq. ft, LOW CEILING: 122 sq. ft
WALLS: 156 sq. ft

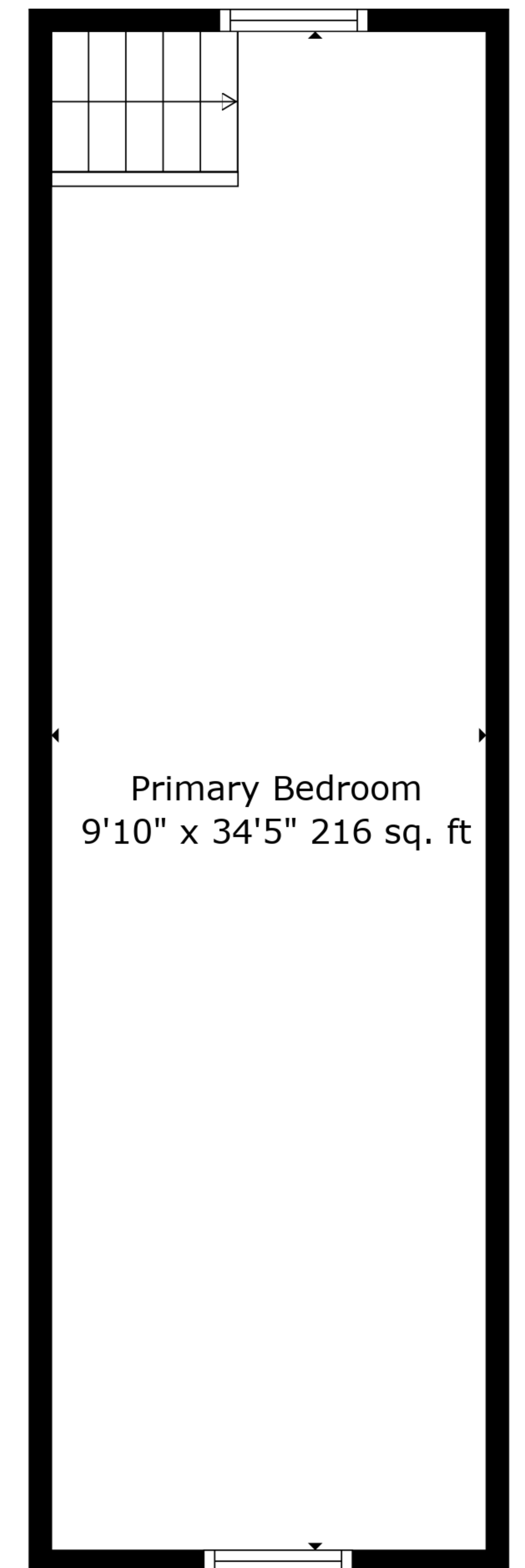




Floor 1



Floor 2



Floor 3



TOTAL: 960 sq. ft
BELOW GROUND: 0 sq. ft, FLOOR 2: 744 sq. ft, FLOOR 3: 216 sq. ft
EXCLUDED AREAS: BASEMENT: 641 sq. ft, PORCH: 134 sq. ft, LOW CEILING: 122 sq. ft
WALLS: 156 sq. ft