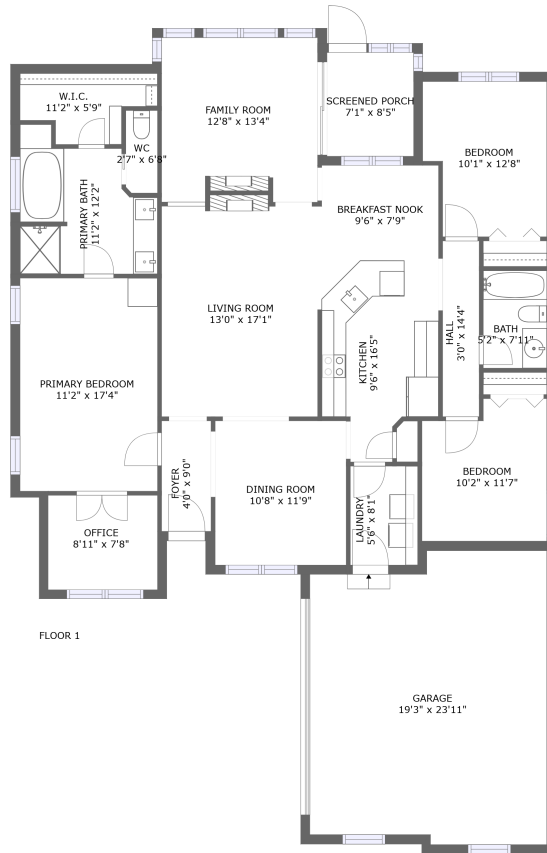



474 Summit Lakes Drive, Athens, Limestone County, Alabama, United States, 35613



Property summary

 **1** Garages

 **3** Bedrooms

 **2** Bathrooms

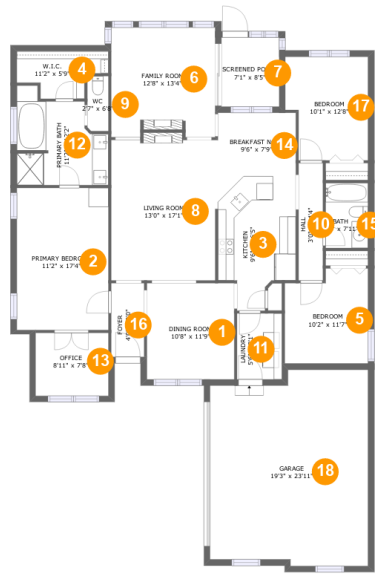
 **0** Half baths

 **1** Floors

 **1,803** Gross living area sqft

 **2,356** Total sqft

474 Summit Lakes Drive, Athens, Limestone County, Alabama, United States, 35613



Room dimensions

Floor 1

Total sqft: 2356 Living area: 1803

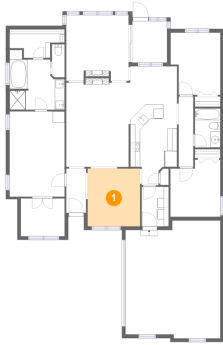
#		Dimensions	sqft	Counted as living area
1	Dining Room	10'8" x 11'9"	125 sq. ft	Yes
2	Bedroom	11'2" x 17'4"	194 sq. ft	Yes
3	Kitchen	9'6" x 16'5"	134 sq. ft	Yes
4	Cl	11'2" x 5'9"	50 sq. ft	Yes
5	Bedroom	10'2" x 11'7"	109 sq. ft	Yes
6	Living Room	12'8" x 13'4"	165 sq. ft	Yes
7	Outdoor	7'1" x 8'5"	60 sq. ft	No
8	Living Room	13'0" x 17'1"	225 sq. ft	Yes
9	Bath	2'7" x 6'8"	17 sq. ft	Yes
10	Hall	3'0" x 14'4"	43 sq. ft	Yes
11	Utility	5'6" x 8'1"	44 sq. ft	Yes

**474 Summit Lakes Drive, Athens, Limestone County,
Alabama, United States, 35613**

#		Dimensions	sqft	Counted as living area
12	Bath	11'2" x 12'2"	107 sq. ft	Yes
13	Office	8'11" x 7'8"	69 sq. ft	Yes
14	Nook	9'6" x 7'9"	74 sq. ft	Yes
15	Bath	5'2" x 7'11"	41 sq. ft	Yes
16	Entry	4'0" x 9'0"	36 sq. ft	Yes
17	Bedroom	10'1" x 12'8"	118 sq. ft	Yes
18	Garage	19'3" x 23'11"	435 sq. ft	No

474 Summit Lakes Drive, Athens, Limestone County, Alabama, United States, 35613

1 Floor 1 - Dining Room



Dimensions: 10'8" x 11'9"
Area: 125 sq. ft
Counted as living area: Yes

Heated: Yes
Finished: Yes
Enclosed: Yes
Contiguous: Yes
Permitted: Yes
Wet space: No
Addition: No
Conversion: No

2 Floor 1 - Bedroom



Dimensions: 11'2" x 17'4"
Area: 194 sq. ft
Counted as living area: Yes

Heated: Yes
Finished: Yes
Enclosed: Yes
Contiguous: Yes
Permitted: Yes
Wet space: No
Addition: No
Conversion: No

474 Summit Lakes Drive, Athens, Limestone County, Alabama, United States, 35613

3 Floor 1 - Kitchen



Dimensions: 9'6" x 16'5"
Area: 134 sq. ft
Counted as living area: Yes

Heated: Yes
Finished: Yes
Enclosed: Yes
Contiguous: Yes
Permitted: Yes
Wet space: No
Addition: No
Conversion: No

4 Floor 1 - Cl



Dimensions: 11'2" x 5'9"
Area: 50 sq. ft
Counted as living area: Yes

Heated: Yes
Finished: Yes
Enclosed: Yes
Contiguous: Yes
Permitted: Yes
Wet space: No
Addition: No
Conversion: No

5 Floor 1 - Bedroom



Dimensions: 10'2" x 11'7"
Area: 109 sq. ft
Counted as living area: Yes

Heated: Yes
Finished: Yes
Enclosed: Yes
Contiguous: Yes
Permitted: Yes
Wet space: No
Addition: No
Conversion: No

474 Summit Lakes Drive, Athens, Limestone County, Alabama, United States, 35613

6 Floor 1 - Living Room



Dimensions: 12'8" x 13'4"
Area: 165 sq. ft
Counted as living area: Yes

Heated: Yes
Finished: Yes
Enclosed: Yes
Contiguous: Yes
Permitted: Yes
Wet space: No
Addition: No
Conversion: No

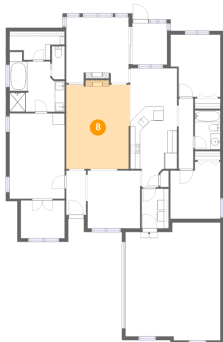
7 Floor 1 - Outdoor



Dimensions: 7'1" x 8'5"
Area: 60 sq. ft
Counted as living area: No

Heated: No
Finished: Yes
Enclosed: No
Contiguous: Yes
Permitted: Yes
Wet space: No
Addition: No
Conversion: No

8 Floor 1 - Living Room



Dimensions: 13'0" x 17'1"
Area: 225 sq. ft
Counted as living area: Yes

Heated: Yes
Finished: Yes
Enclosed: Yes
Contiguous: Yes
Permitted: Yes
Wet space: No
Addition: No
Conversion: No

474 Summit Lakes Drive, Athens, Limestone County, Alabama, United States, 35613

9 Floor 1 - Bath



Dimensions: 2'7" x 6'8"
Area: 17 sq. ft
Counted as living area: Yes

Heated: Yes
Finished: Yes
Enclosed: Yes
Contiguous: Yes
Permitted: Yes
Wet space: Yes
Addition: No
Conversion: No

10 Floor 1 - Hall



Dimensions: 3'0" x 14'4"
Area: 43 sq. ft
Counted as living area: Yes

Heated: Yes
Finished: Yes
Enclosed: Yes
Contiguous: Yes
Permitted: Yes
Wet space: No
Addition: No
Conversion: No

11 Floor 1 - Utility

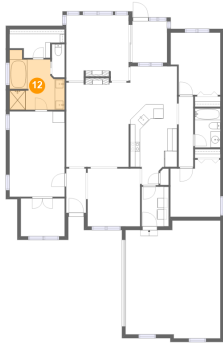


Dimensions: 5'6" x 8'1"
Area: 44 sq. ft
Counted as living area: Yes

Heated: Yes
Finished: Yes
Enclosed: Yes
Contiguous: Yes
Permitted: Yes
Wet space: No
Addition: No
Conversion: No

474 Summit Lakes Drive, Athens, Limestone County, Alabama, United States, 35613

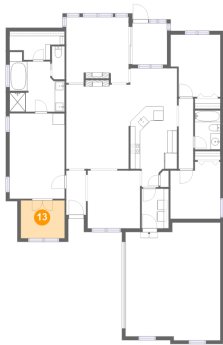
12 Floor 1 - Bath



Dimensions: 11'2" x 12'2"
Area: 107 sq. ft
Counted as living area: Yes

Heated: Yes
Finished: Yes
Enclosed: Yes
Contiguous: Yes
Permitted: Yes
Wet space: Yes
Addition: No
Conversion: No

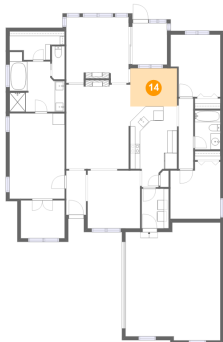
13 Floor 1 - Office



Dimensions: 8'11" x 7'8"
Area: 69 sq. ft
Counted as living area: Yes

Heated: Yes
Finished: Yes
Enclosed: Yes
Contiguous: Yes
Permitted: Yes
Wet space: No
Addition: No
Conversion: No

14 Floor 1 - Nook



Dimensions: 9'6" x 7'9"
Area: 74 sq. ft
Counted as living area: Yes

Heated: Yes
Finished: Yes
Enclosed: Yes
Contiguous: Yes
Permitted: Yes
Wet space: No
Addition: No
Conversion: No

474 Summit Lakes Drive, Athens, Limestone County, Alabama, United States, 35613

15 Floor 1 - Bath



Dimensions: 5'2" x 7'11"
Area: 41 sq. ft
Counted as living area: Yes

Heated: Yes
Finished: Yes
Enclosed: Yes
Contiguous: Yes
Permitted: Yes
Wet space: Yes
Addition: No
Conversion: No

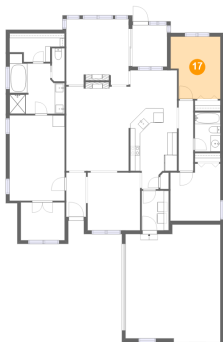
16 Floor 1 - Entry



Dimensions: 4'0" x 9'0"
Area: 36 sq. ft
Counted as living area: Yes

Heated: Yes
Finished: Yes
Enclosed: Yes
Contiguous: Yes
Permitted: Yes
Wet space: No
Addition: No
Conversion: No

17 Floor 1 - Bedroom



Dimensions: 10'1" x 12'8"
Area: 118 sq. ft
Counted as living area: Yes

Heated: Yes
Finished: Yes
Enclosed: Yes
Contiguous: Yes
Permitted: Yes
Wet space: No
Addition: No
Conversion: No

**474 Summit Lakes Drive, Athens, Limestone County,
Alabama, United States, 35613**

18 Floor 1 - Garage



Dimensions: 19'3" x 23'11"
Area: 435 sq. ft
Counted as living area: No

Heated: No
Finished: No
Enclosed: Yes
Contiguous: Yes
Permitted: Yes
Wet space: No
Addition: No
Conversion: No