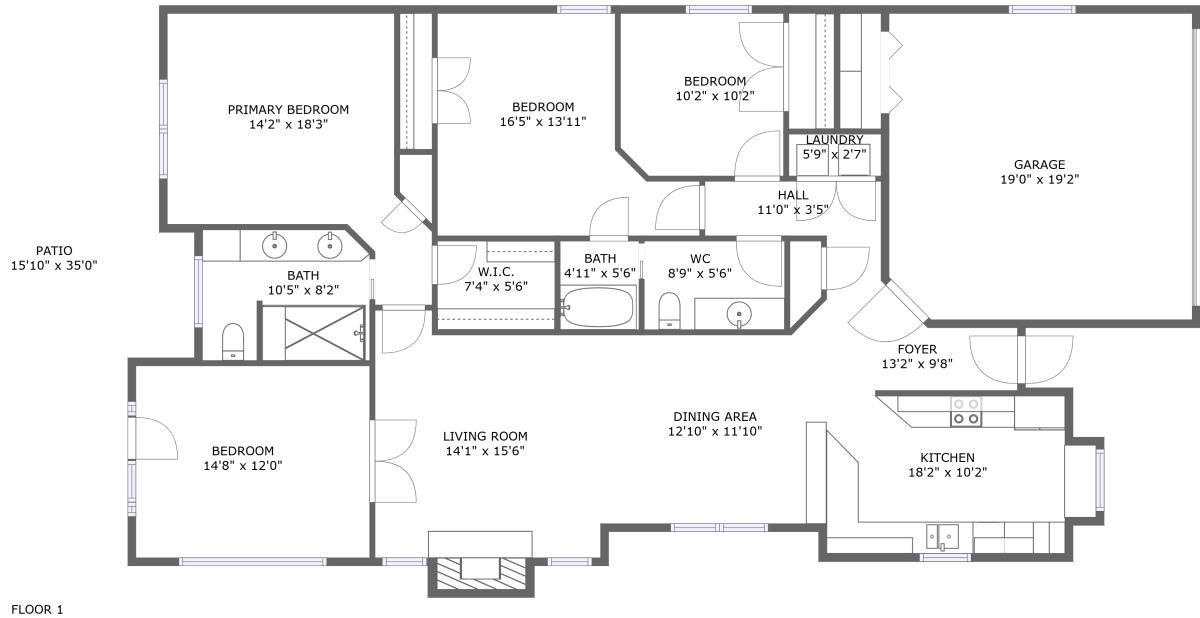



# 4826 Cave Spring Lane, Woodmont Manor, Cave Spring, Roanoke, Roanoke County, Virginia, United



## Property summary

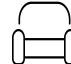
 **1** Garages

 **4** Bedrooms

 **2** Bathrooms

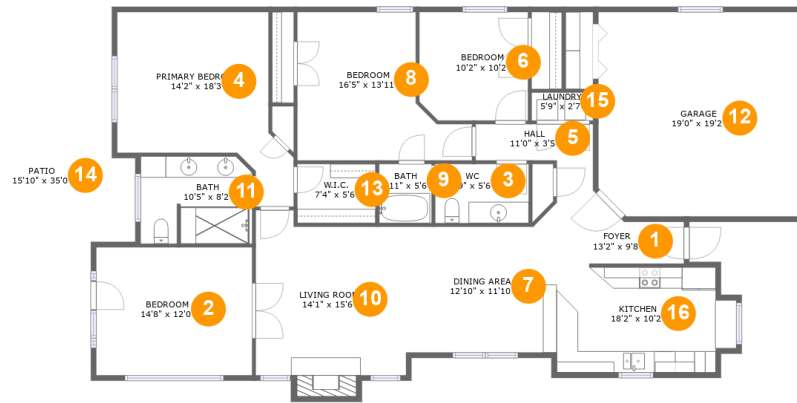
 **0** Half baths

 **1** Floors

 **1,731**  
Gross living  
area sqft

 **2,594**  
Total sqft

# 4826 Cave Spring Lane, Woodmont Manor, Cave Spring, Roanoke, Roanoke County, Virginia, United



## Room dimensions

Floor 1

Total sqft: 2594 Living area: 1731

| #  |             | Dimensions      | sqft       | Counted as living area |
|----|-------------|-----------------|------------|------------------------|
| 1  | Entry       | 13'2" x 9'8"    | 77 sq. ft  | Yes                    |
| 2  | Bedroom     | 14'8" x 12'0"   | 176 sq. ft | Yes                    |
| 3  | Bath        | 8'9" x 5'6"     | 49 sq. ft  | Yes                    |
| 4  | Bedroom     | 14'2" x 18'3"   | 208 sq. ft | Yes                    |
| 5  | Hall        | 11'0" x 3'5"    | 38 sq. ft  | Yes                    |
| 6  | Bedroom     | 10'2" x 10'2"   | 102 sq. ft | Yes                    |
| 7  | Dining Room | 12'10" x 11'10" | 152 sq. ft | Yes                    |
| 8  | Bedroom     | 16'5" x 13'11"  | 175 sq. ft | Yes                    |
| 9  | Bath        | 4'11" x 5'6"    | 27 sq. ft  | Yes                    |
| 10 | Living Room | 14'1" x 15'6"   | 213 sq. ft | Yes                    |
| 11 | Bath        | 10'5" x 8'2"    | 83 sq. ft  | Yes                    |

Scan captured on Thu, 14 Nov 2024 16:28:34 GMT

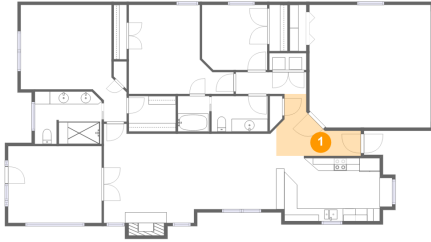
Information is calculated by Cubicasa technology deemed highly reliable but not guaranteed.

# 4826 Cave Spring Lane, Woodmont Manor, Cave Spring, Roanoke, Roanoke County, Virginia, United

| #  |         | Dimensions     | sqft       | Counted as living area |
|----|---------|----------------|------------|------------------------|
| 12 | Garage  | 19'0" x 19'2"  | 360 sq. ft | No                     |
| 13 | Cl      | 7'4" x 5'6"    | 41 sq. ft  | Yes                    |
| 14 | Outdoor | 15'10" x 35'0" | 442 sq. ft | No                     |
| 15 | Utility | 5'9" x 2'7"    | 15 sq. ft  | Yes                    |
| 16 | Kitchen | 18'2" x 10'2"  | 168 sq. ft | Yes                    |

# 4826 Cave Spring Lane, Woodmont Manor, Cave Spring, Roanoke, Roanoke County, Virginia, United

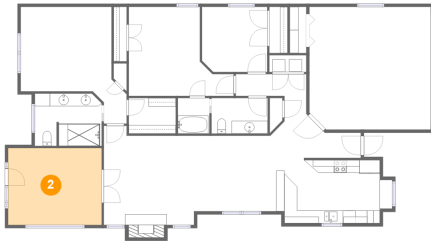
## 1 Floor 1 - Entry



Dimensions: 13'2" x 9'8"  
Area: 77 sq. ft  
Counted as living area: Yes

Heated: Yes  
Finished: Yes  
Enclosed: Yes  
Contiguous: Yes  
Permitted: Yes  
Wet space: No  
Addition: No  
Conversion: No

## 2 Floor 1 - Bedroom

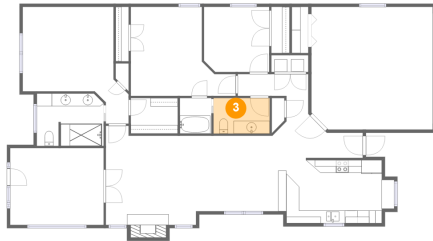


Dimensions: 14'8" x 12'0"  
Area: 176 sq. ft  
Counted as living area: Yes

Heated: Yes  
Finished: Yes  
Enclosed: Yes  
Contiguous: Yes  
Permitted: Yes  
Wet space: No  
Addition: No  
Conversion: No

# 4826 Cave Spring Lane, Woodmont Manor, Cave Spring, Roanoke, Roanoke County, Virginia, United

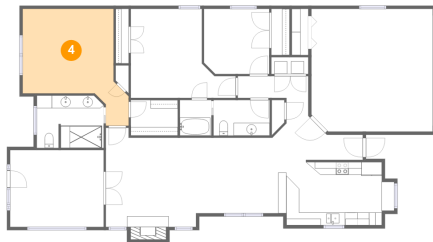
## 3 Floor 1 - Bath



Dimensions: 8'9" x 5'6"  
Area: 49 sq. ft  
Counted as living area: Yes

Heated: Yes  
Finished: Yes  
Enclosed: Yes  
Contiguous: Yes  
Permitted: Yes  
Wet space: Yes  
Addition: No  
Conversion: No

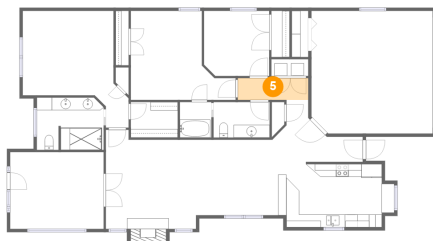
## 4 Floor 1 - Bedroom



Dimensions: 14'2" x 18'3"  
Area: 208 sq. ft  
Counted as living area: Yes

Heated: Yes  
Finished: Yes  
Enclosed: Yes  
Contiguous: Yes  
Permitted: Yes  
Wet space: No  
Addition: No  
Conversion: No

## 5 Floor 1 - Hall

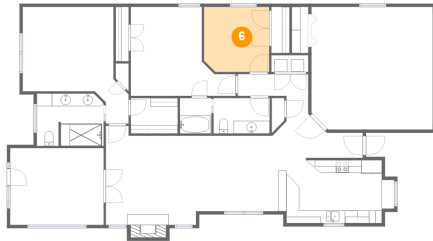


Dimensions: 11'0" x 3'5"  
Area: 38 sq. ft  
Counted as living area: Yes

Heated: Yes  
Finished: Yes  
Enclosed: Yes  
Contiguous: Yes  
Permitted: Yes  
Wet space: No  
Addition: No  
Conversion: No

# 4826 Cave Spring Lane, Woodmont Manor, Cave Spring, Roanoke, Roanoke County, Virginia, United

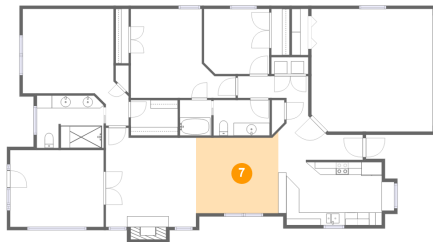
## 6 Floor 1 - Bedroom



Dimensions: 10'2" x 10'2"  
Area: 102 sq. ft  
Counted as living area: Yes

Heated: Yes  
Finished: Yes  
Enclosed: Yes  
Contiguous: Yes  
Permitted: Yes  
Wet space: No  
Addition: No  
Conversion: No

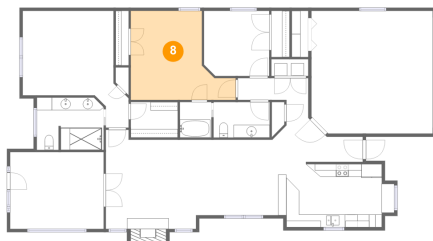
## 7 Floor 1 - Dining Room



Dimensions: 12'10" x 11'10"  
Area: 152 sq. ft  
Counted as living area: Yes

Heated: Yes  
Finished: Yes  
Enclosed: Yes  
Contiguous: Yes  
Permitted: Yes  
Wet space: No  
Addition: No  
Conversion: No

## 8 Floor 1 - Bedroom

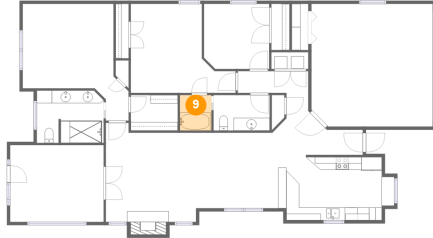


Dimensions: 16'5" x 13'11"  
Area: 175 sq. ft  
Counted as living area: Yes

Heated: Yes  
Finished: Yes  
Enclosed: Yes  
Contiguous: Yes  
Permitted: Yes  
Wet space: No  
Addition: No  
Conversion: No

# 4826 Cave Spring Lane, Woodmont Manor, Cave Spring, Roanoke, Roanoke County, Virginia, United

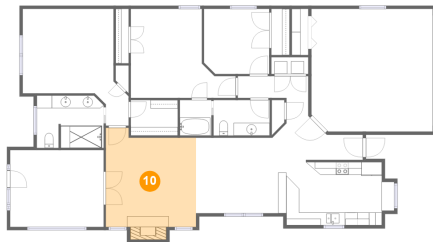
## 9 Floor 1 - Bath



Dimensions: 4'11" x 5'6"  
Area: 27 sq. ft  
Counted as living area: Yes

Heated: Yes  
Finished: Yes  
Enclosed: Yes  
Contiguous: Yes  
Permitted: Yes  
Wet space: Yes  
Addition: No  
Conversion: No

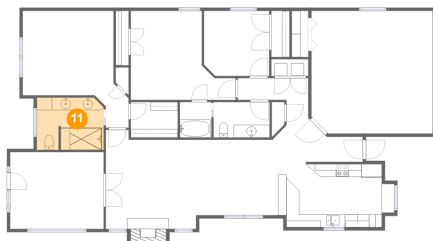
## 10 Floor 1 - Living Room



Dimensions: 14'1" x 15'6"  
Area: 213 sq. ft  
Counted as living area: Yes

Heated: Yes  
Finished: Yes  
Enclosed: Yes  
Contiguous: Yes  
Permitted: Yes  
Wet space: No  
Addition: No  
Conversion: No

## 11 Floor 1 - Bath

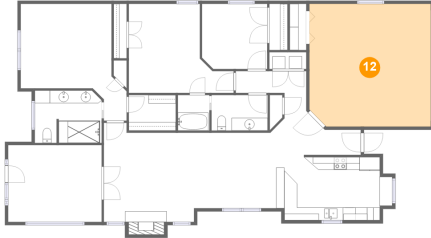


Dimensions: 10'5" x 8'2"  
Area: 83 sq. ft  
Counted as living area: Yes

Heated: Yes  
Finished: Yes  
Enclosed: Yes  
Contiguous: Yes  
Permitted: Yes  
Wet space: Yes  
Addition: No  
Conversion: No

# 4826 Cave Spring Lane, Woodmont Manor, Cave Spring, Roanoke, Roanoke County, Virginia, United

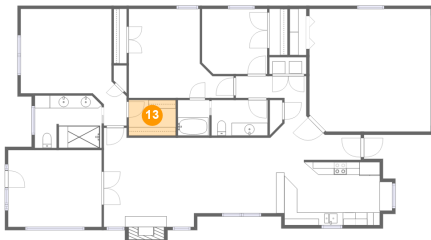
## 12 Floor 1 - Garage



Dimensions: 19'0" x 19'2"  
Area: 360 sq. ft  
Counted as living area: No

Heated: No  
Finished: No  
Enclosed: Yes  
Contiguous: Yes  
Permitted: Yes  
Wet space: No  
Addition: No  
Conversion: No

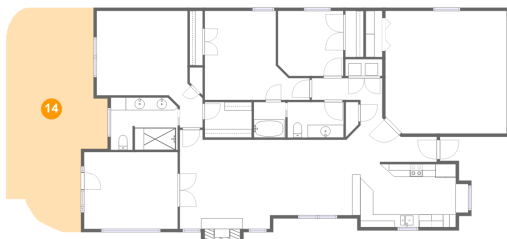
## 13 Floor 1 - Cl



Dimensions: 7'4" x 5'6"  
Area: 41 sq. ft  
Counted as living area: Yes

Heated: Yes  
Finished: Yes  
Enclosed: Yes  
Contiguous: Yes  
Permitted: Yes  
Wet space: No  
Addition: No  
Conversion: No

## 14 Floor 1 - Outdoor



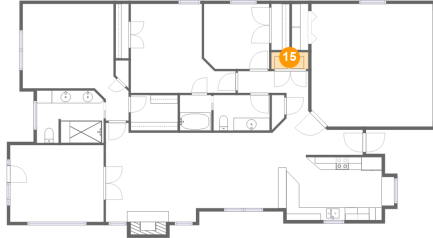
Dimensions: 15'10" x 35'0"  
Area: 442 sq. ft  
Counted as living area: No

Heated: No  
Finished: Yes  
Enclosed: No  
Contiguous: Yes  
Permitted: Yes  
Wet space: No  
Addition: No  
Conversion: No



# 4826 Cave Spring Lane, Woodmont Manor, Cave Spring, Roanoke, Roanoke County, Virginia, United

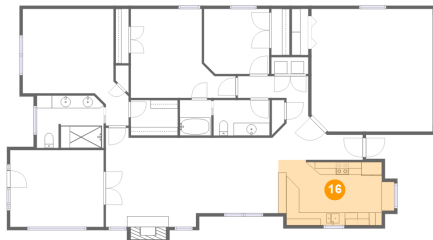
## 15 Floor 1 - Utility



Dimensions: 5'9" x 2'7"  
Area: 15 sq. ft  
Counted as living area: Yes

Heated: Yes  
Finished: Yes  
Enclosed: Yes  
Contiguous: Yes  
Permitted: Yes  
Wet space: No  
Addition: No  
Conversion: No

## 16 Floor 1 - Kitchen



Dimensions: 18'2" x 10'2"  
Area: 168 sq. ft  
Counted as living area: Yes

Heated: Yes  
Finished: Yes  
Enclosed: Yes  
Contiguous: Yes  
Permitted: Yes  
Wet space: No  
Addition: No  
Conversion: No