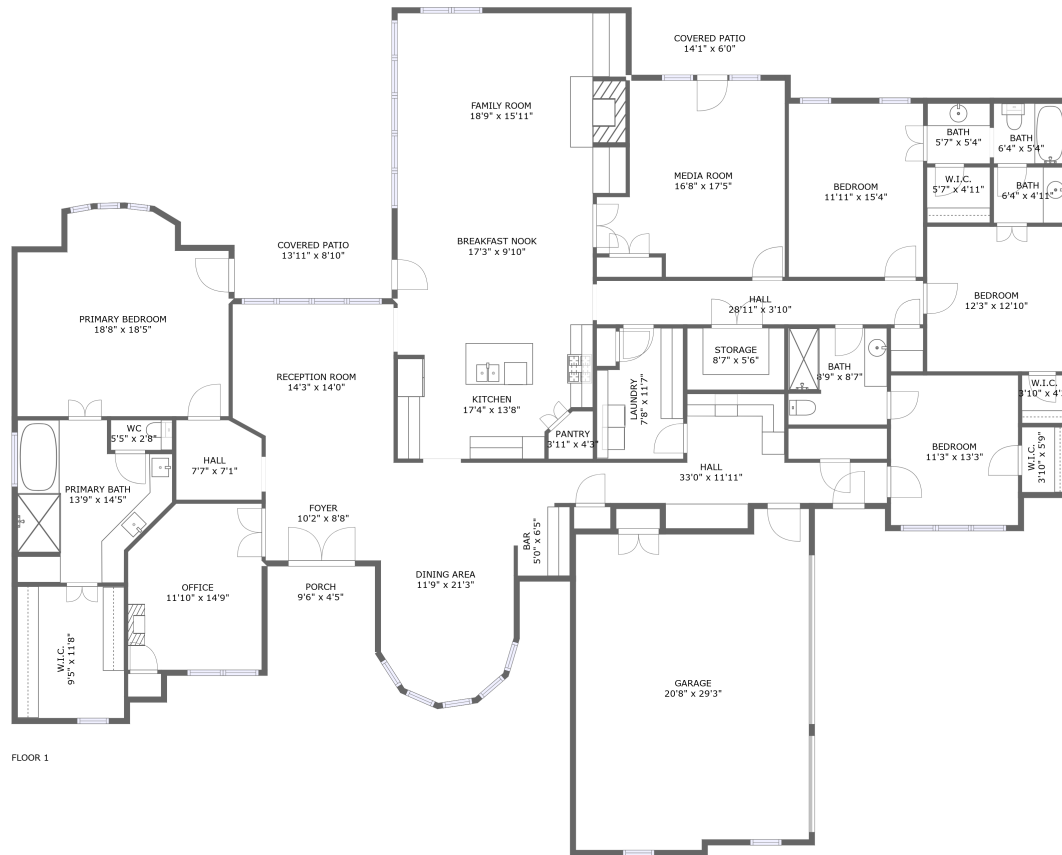






1915 Kings Pass, Heath, TX, US



Property Summary

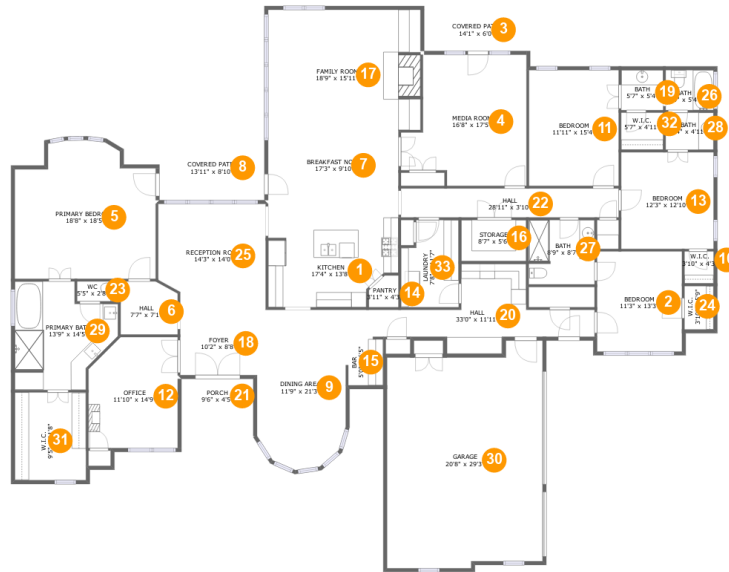
 **1** garages  **4** bedrooms  **3** bathrooms  **0** half baths

 **1** floors

 **3,812** Gross Living Area sqft

 **4,734** total sqft

1915 Kings Pass, Heath, TX, US



Room Dimensions

Floor 1

Total sqft: 4734

Living area: 3812

#	Room name	Dimensions	Area (sqft)	Counted as Living Area
1	Kitchen	17'4" x 13'8"	220 sq. ft	Yes
2	Bedroom	11'3" x 13'3"	150 sq. ft	Yes
3	Covered Patio	14'1" x 6'0"	84 sq. ft	No
4	Media Room	16'8" x 17'5"	247 sq. ft	Yes
5	Primary Bedroom	18'8" x 18'5"	307 sq. ft	Yes
6	Hall	7'7" x 7'1"	51 sq. ft	Yes
7	Breakfast Nook	17'3" x 9'10"	170 sq. ft	Yes
8	Covered Patio	13'11" x 8'10"	123 sq. ft	No
9	Dining Area	11'9" x 21'3"	234 sq. ft	Yes
10	W.i.c.	3'10" x 4'3"	16 sq. ft	Yes
11	Bedroom	11'11" x 15'4"	183 sq. ft	Yes

1915 Kings Pass,Heath,TX,US

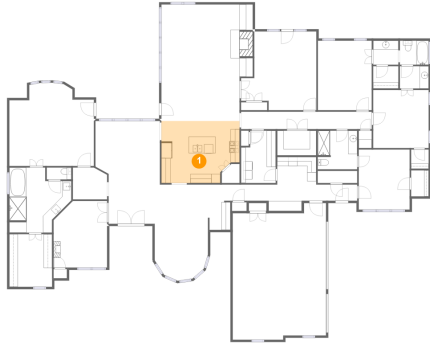
#	Room name	Dimensions	Area (sqft)	Counted as Living Area
12	Office	11'10" x 14'9"	165 sq. ft	Yes
13	Bedroom	12'3" x 12'10"	157 sq. ft	Yes
14	Pantry	3'11" x 4'3"	14 sq. ft	Yes
15	Bar	5'0" x 6'5"	31 sq. ft	Yes
16	Storage	8'7" x 5'6"	47 sq. ft	No
17	Family Room	18'9" x 15'11"	320 sq. ft	Yes
18	Foyer	10'2" x 8'8"	88 sq. ft	Yes
19	Bath	5'7" x 5'4"	30 sq. ft	Yes
20	Hall	33'0" x 11'11"	187 sq. ft	Yes
21	Porch	9'6" x 4'5"	42 sq. ft	No
22	Hall	28'11" x 3'10"	112 sq. ft	Yes
23	Wc	5'5" x 2'8"	14 sq. ft	Yes
24	W.i.c.	3'10" x 5'9"	22 sq. ft	Yes
25	Reception Room	14'3" x 14'0"	191 sq. ft	Yes
26	Bath	6'4" x 5'4"	34 sq. ft	Yes
27	Bath	8'9" x 8'7"	74 sq. ft	Yes
28	Bath	6'4" x 4'11"	31 sq. ft	Yes
29	Primary Bath	13'9" x 14'5"	158 sq. ft	Yes
30	Garage	20'8" x 29'3"	579 sq. ft	No
31	W.i.c.	9'5" x 11'8"	110 sq. ft	Yes
32	W.i.c.	5'7" x 4'11"	27 sq. ft	Yes

1915 Kings Pass, Heath, TX, US

#	Room name	Dimensions	Area (sqft)	Counted as Living Area
33	Laundry	7'8" x 11'7"	81 sq. ft	Yes

1915 Kings Pass, Heath, TX, US

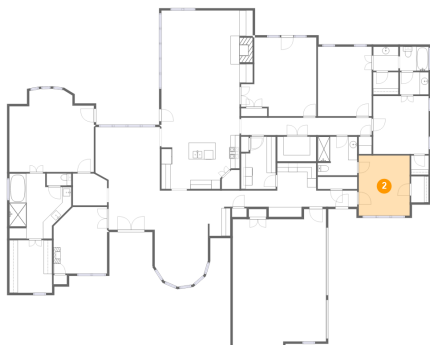
1 Floor 1 - Kitchen



Dimensions: 17'4" x 13'8"
Area: 220 sq. ft
Counted as Living Area:
Yes

Heated: Yes
Finished: Yes
Enclosed: Yes
Contiguous:
Yes
Permitted: Yes
Wet Space: No
Addition: No
Conversion: No

2 Floor 1 - Bedroom



Dimensions: 11'3" x 13'3"
Area: 150 sq. ft
Counted as Living Area:
Yes

Heated: Yes
Finished: Yes
Enclosed: Yes
Contiguous:
Yes
Permitted: Yes
Wet Space: No
Addition: No
Conversion: No

1915 Kings Pass, Heath, TX, US

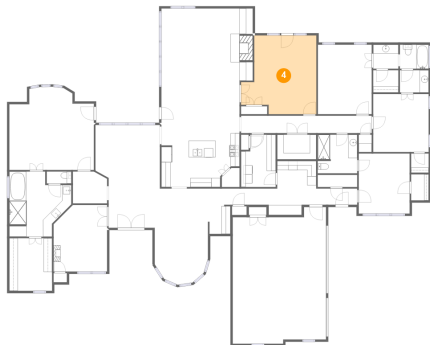
3 Floor 1 - Covered Patio



Dimensions: 14'1" x 6'0"
Area: 84 sq. ft
Counted as Living Area: No

Heated: No
Finished: Yes
Enclosed: No
Contiguous: Yes
Permitted: Yes
Wet Space: No
Addition: No
Conversion: No

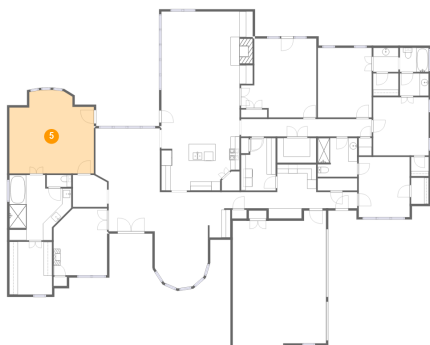
4 Floor 1 - Media Room



Dimensions: 16'8" x 17'5"
Area: 247 sq. ft
Counted as Living Area: Yes

Heated: Yes
Finished: Yes
Enclosed: Yes
Contiguous: Yes
Permitted: Yes
Wet Space: No
Addition: No
Conversion: No

5 Floor 1 - Primary Bedroom

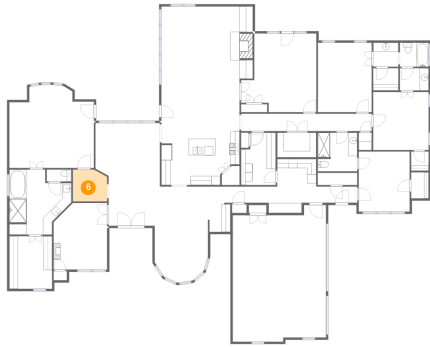


Dimensions: 18'8" x 18'5"
Area: 307 sq. ft
Counted as Living Area: Yes

Heated: Yes
Finished: Yes
Enclosed: Yes
Contiguous: Yes
Permitted: Yes
Wet Space: No
Addition: No
Conversion: No

1915 Kings Pass, Heath, TX, US

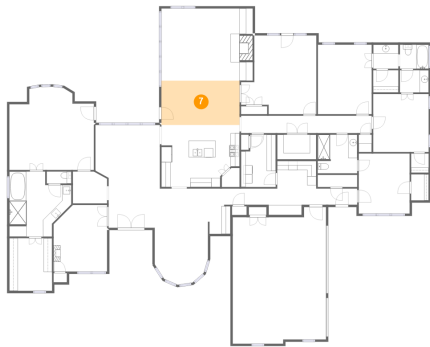
6 Floor 1 - Hall



Dimensions: 7'7" x 7'1"
Area: 51 sq. ft
Counted as Living Area:
Yes

Heated: Yes
Finished: Yes
Enclosed: Yes
Contiguous:
Yes
Permitted: Yes
Wet Space: No
Addition: No
Conversion: No

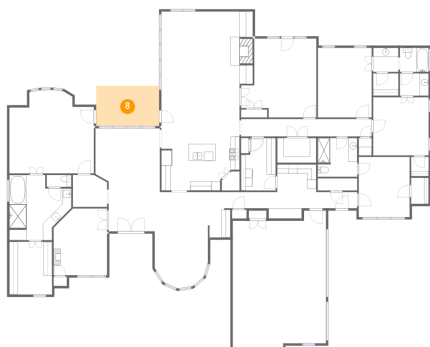
7 Floor 1 - Breakfast Nook



Dimensions: 17'3" x 9'10"
Area: 170 sq. ft
Counted as Living Area:
Yes

Heated: Yes
Finished: Yes
Enclosed: Yes
Contiguous:
Yes
Permitted: Yes
Wet Space: No
Addition: No
Conversion: No

8 Floor 1 - Covered Patio

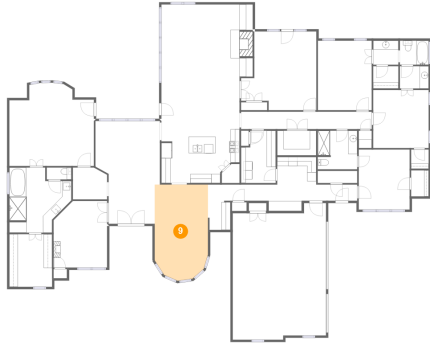


Dimensions: 13'11" x 8'10"
Area: 123 sq. ft
Counted as Living Area: No

Heated: No
Finished: Yes
Enclosed: No
Contiguous: Yes
Permitted: Yes
Wet Space: No
Addition: No
Conversion: No

1915 Kings Pass, Heath, TX, US

9 Floor 1 - Dining Area



Dimensions: 11'9" x 21'3"
Area: 234 sq. ft
Counted as Living Area:
Yes

Heated: Yes
Finished: Yes
Enclosed: Yes
Contiguous:
Yes
Permitted: Yes
Wet Space: No
Addition: No
Conversion: No

10 Floor 1 - W.i.c.



Dimensions: 3'10" x 4'3"
Area: 16 sq. ft
Counted as Living Area:
Yes

Heated: Yes
Finished: Yes
Enclosed: Yes
Contiguous:
Yes
Permitted: Yes
Wet Space: No
Addition: No
Conversion: No

11 Floor 1 - Bedroom

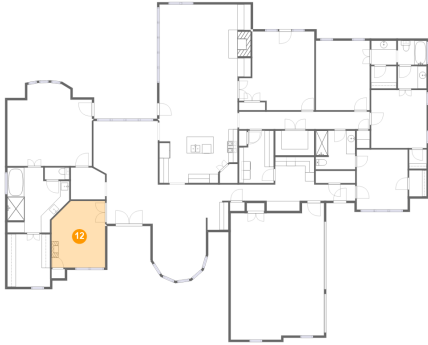


Dimensions: 11'11" x 15'4"
Area: 183 sq. ft
Counted as Living Area:
Yes

Heated: Yes
Finished: Yes
Enclosed: Yes
Contiguous:
Yes
Permitted: Yes
Wet Space: No
Addition: No
Conversion: No

1915 Kings Pass, Heath, TX, US

12 Floor 1 - Office



Dimensions: 11'10" x 14'9"
Area: 165 sq. ft
Counted as Living Area:
Yes

Heated: Yes
Finished: Yes
Enclosed: Yes
Contiguous:
Yes
Permitted: Yes
Wet Space: No
Addition: No
Conversion: No

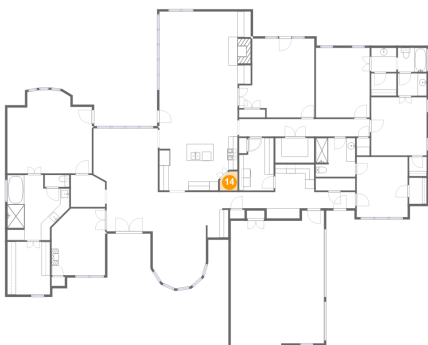
13 Floor 1 - Bedroom



Dimensions: 12'3" x 12'10"
Area: 157 sq. ft
Counted as Living Area:
Yes

Heated: Yes
Finished: Yes
Enclosed: Yes
Contiguous:
Yes
Permitted: Yes
Wet Space: No
Addition: No
Conversion: No

14 Floor 1 - Pantry



Dimensions: 3'11" x 4'3"
Area: 14 sq. ft
Counted as Living Area:
Yes

Heated: Yes
Finished: Yes
Enclosed: Yes
Contiguous:
Yes
Permitted: Yes
Wet Space: No
Addition: No
Conversion: No

1915 Kings Pass, Heath, TX, US

15 Floor 1 - Bar



Dimensions: 5'0" x 6'5"
Area: 31 sq. ft
Counted as Living Area:
Yes

Heated: Yes
Finished: Yes
Enclosed: Yes
Contiguous:
Yes
Permitted: Yes
Wet Space: No
Addition: No
Conversion: No

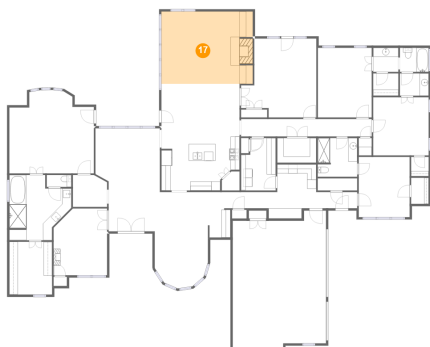
16 Floor 1 - Storage



Dimensions: 8'7" x 5'6"
Area: 47 sq. ft
Counted as Living Area: No

Heated: No
Finished: No
Enclosed: No
Contiguous: No
Permitted: Yes
Wet Space: No
Addition: No
Conversion: No

17 Floor 1 - Family Room

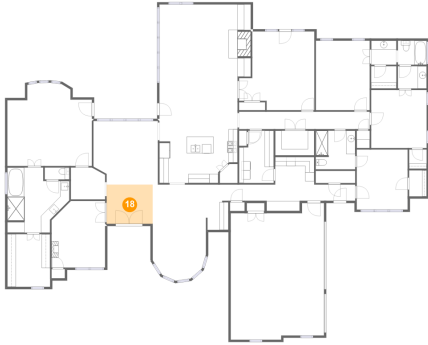


Dimensions: 18'9" x 15'11"
Area: 320 sq. ft
Counted as Living Area:
Yes

Heated: Yes
Finished: Yes
Enclosed: Yes
Contiguous:
Yes
Permitted: Yes
Wet Space: No
Addition: No
Conversion: No

1915 Kings Pass, Heath, TX, US

18 Floor 1 - Foyer



Dimensions: 10'2" x 8'8"
Area: 88 sq. ft
Counted as Living Area:
Yes

Heated: Yes
Finished: Yes
Enclosed: Yes
Contiguous:
Yes
Permitted: Yes
Wet Space: No
Addition: No
Conversion: No

19 Floor 1 - Bath



Dimensions: 5'7" x 5'4"
Area: 30 sq. ft
Counted as Living Area:
Yes

Heated: Yes
Finished: Yes
Enclosed: Yes
Contiguous:
Yes
Permitted: Yes
Wet Space: Yes
Addition: No
Conversion: No

20 Floor 1 - Hall



Dimensions: 33'0" x 11'11"
Area: 187 sq. ft
Counted as Living Area:
Yes

Heated: Yes
Finished: Yes
Enclosed: Yes
Contiguous:
Yes
Permitted: Yes
Wet Space: No
Addition: No
Conversion: No

1915 Kings Pass, Heath, TX, US

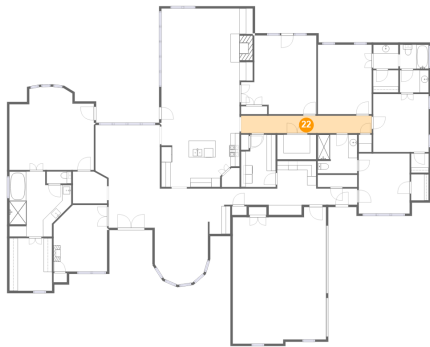
21 Floor 1 - Porch



Dimensions: 9'6" x 4'5"
Area: 42 sq. ft
Counted as Living Area: No

Heated: No
Finished: Yes
Enclosed: No
Contiguous: Yes
Permitted: Yes
Wet Space: No
Addition: No
Conversion: No

22 Floor 1 - Hall



Dimensions: 28'11" x 3'10"
Area: 112 sq. ft
Counted as Living Area: Yes

Heated: Yes
Finished: Yes
Enclosed: Yes
Contiguous: Yes
Permitted: Yes
Wet Space: No
Addition: No
Conversion: No

23 Floor 1 - Wc

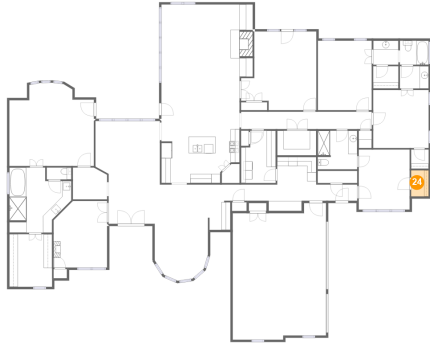


Dimensions: 5'5" x 2'8"
Area: 14 sq. ft
Counted as Living Area: Yes

Heated: Yes
Finished: Yes
Enclosed: Yes
Contiguous: Yes
Permitted: Yes
Wet Space: Yes
Addition: No
Conversion: No

1915 Kings Pass, Heath, TX, US

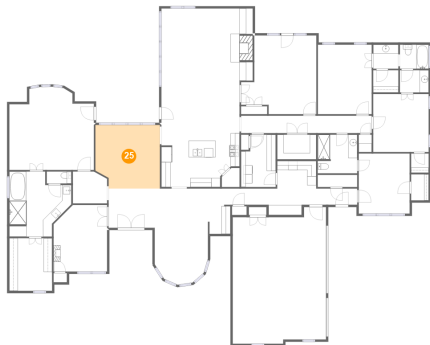
24 Floor 1 - W.i.c.



Dimensions: 3'10" x 5'9"
Area: 22 sq. ft
Counted as Living Area:
Yes

Heated: Yes
Finished: Yes
Enclosed: Yes
Contiguous:
Yes
Permitted: Yes
Wet Space: No
Addition: No
Conversion: No

25 Floor 1 - Reception Room



Dimensions: 14'3" x 14'0"
Area: 191 sq. ft
Counted as Living Area:
Yes

Heated: Yes
Finished: Yes
Enclosed: Yes
Contiguous:
Yes
Permitted: Yes
Wet Space: No
Addition: No
Conversion: No

26 Floor 1 - Bath



Dimensions: 6'4" x 5'4"
Area: 34 sq. ft
Counted as Living Area:
Yes

Heated: Yes
Finished: Yes
Enclosed: Yes
Contiguous:
Yes
Permitted: Yes
Wet Space: Yes
Addition: No
Conversion: No

1915 Kings Pass, Heath, TX, US

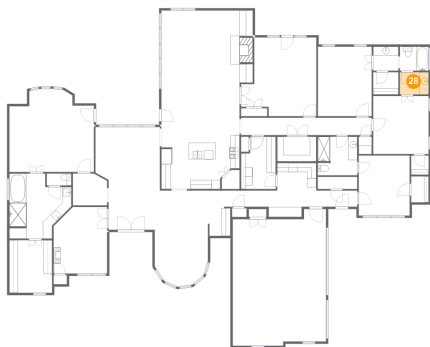
27 Floor 1 - Bath



Dimensions: 8'9" x 8'7"
Area: 74 sq. ft
Counted as Living Area:
Yes

Heated: Yes
Finished: Yes
Enclosed: Yes
Contiguous:
Yes
Permitted: Yes
Wet Space: Yes
Addition: No
Conversion: No

28 Floor 1 - Bath



Dimensions: 6'4" x 4'11"
Area: 31 sq. ft
Counted as Living Area:
Yes

Heated: Yes
Finished: Yes
Enclosed: Yes
Contiguous:
Yes
Permitted: Yes
Wet Space: Yes
Addition: No
Conversion: No

29 Floor 1 - Primary Bath

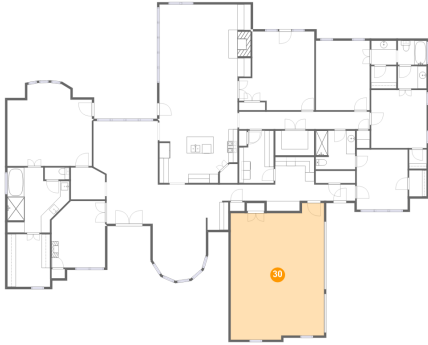


Dimensions: 13'9" x 14'5"
Area: 158 sq. ft
Counted as Living Area:
Yes

Heated: Yes
Finished: Yes
Enclosed: Yes
Contiguous:
Yes
Permitted: Yes
Wet Space: Yes
Addition: No
Conversion: No

1915 Kings Pass, Heath, TX, US

30 Floor 1 - Garage



Dimensions: 20'8" x 29'3"
Area: 579 sq. ft
Counted as Living Area: No

Heated: No
Finished: No
Enclosed: Yes
Contiguous: Yes
Permitted: Yes
Wet Space: No
Addition: No
Conversion: No

31 Floor 1 - W.i.c.



Dimensions: 9'5" x 11'8"
Area: 110 sq. ft
Counted as Living Area: Yes

Heated: Yes
Finished: Yes
Enclosed: Yes
Contiguous: Yes
Permitted: Yes
Wet Space: No
Addition: No
Conversion: No

32 Floor 1 - W.i.c.

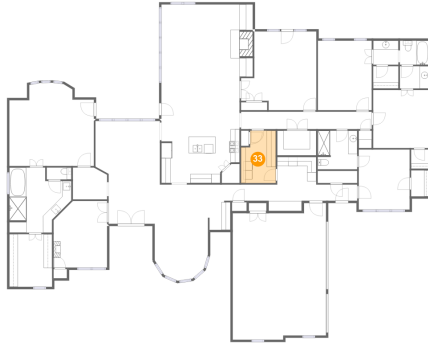


Dimensions: 5'7" x 4'11"
Area: 27 sq. ft
Counted as Living Area: Yes

Heated: Yes
Finished: Yes
Enclosed: Yes
Contiguous: Yes
Permitted: Yes
Wet Space: No
Addition: No
Conversion: No

1915 Kings Pass, Heath, TX, US

33 Floor 1 - Laundry



Dimensions: 7'8" x 11'7"
Area: 81 sq. ft
Counted as Living Area:
Yes

Heated: Yes
Finished: Yes
Enclosed: Yes
Contiguous:
Yes
Permitted: Yes
Wet Space: No
Addition: No
Conversion: No