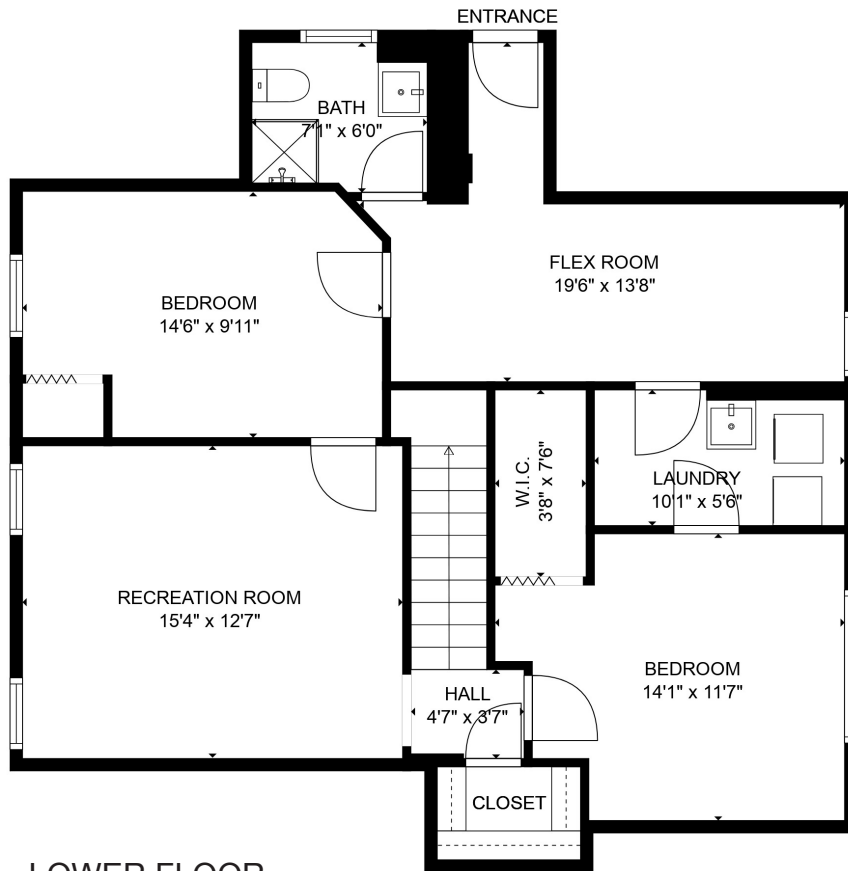


2790 E 49th Ave

Vancouver, BC

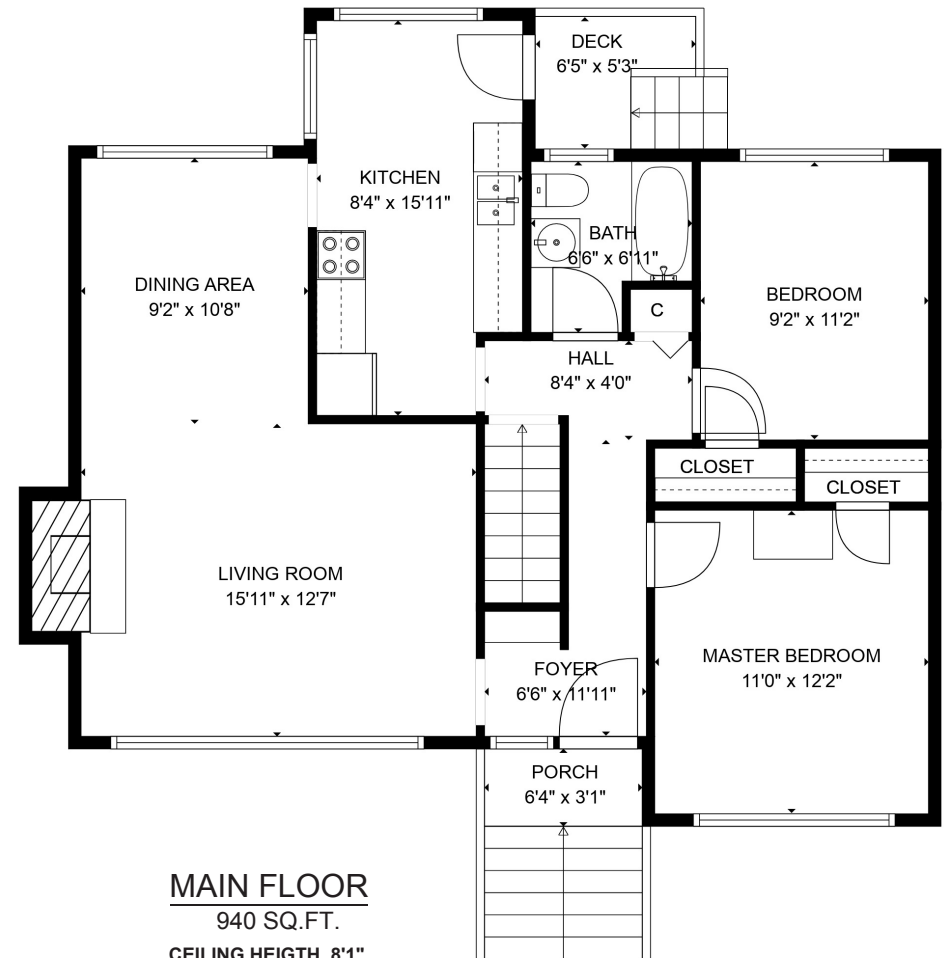
MAIN FLOOR 940 SQ.FT.
LOWER FLOOR 849 SQ.FT.
TOTAL LIVING AREA 1,789 SQ.FT.



LOWER FLOOR

849 SQ.FT.

CEILING HEIGHT 6'10"



MAIN FLOOR

940 SQ.FT.

CEILING HEIGHT 8'1"

