

340-1840 160 St.

Surrey BC V4A 4X4

Total Area 1,373 SQ.FT.

Ceiling Height: 7'5"

2 + 1



BEDROOMS

2

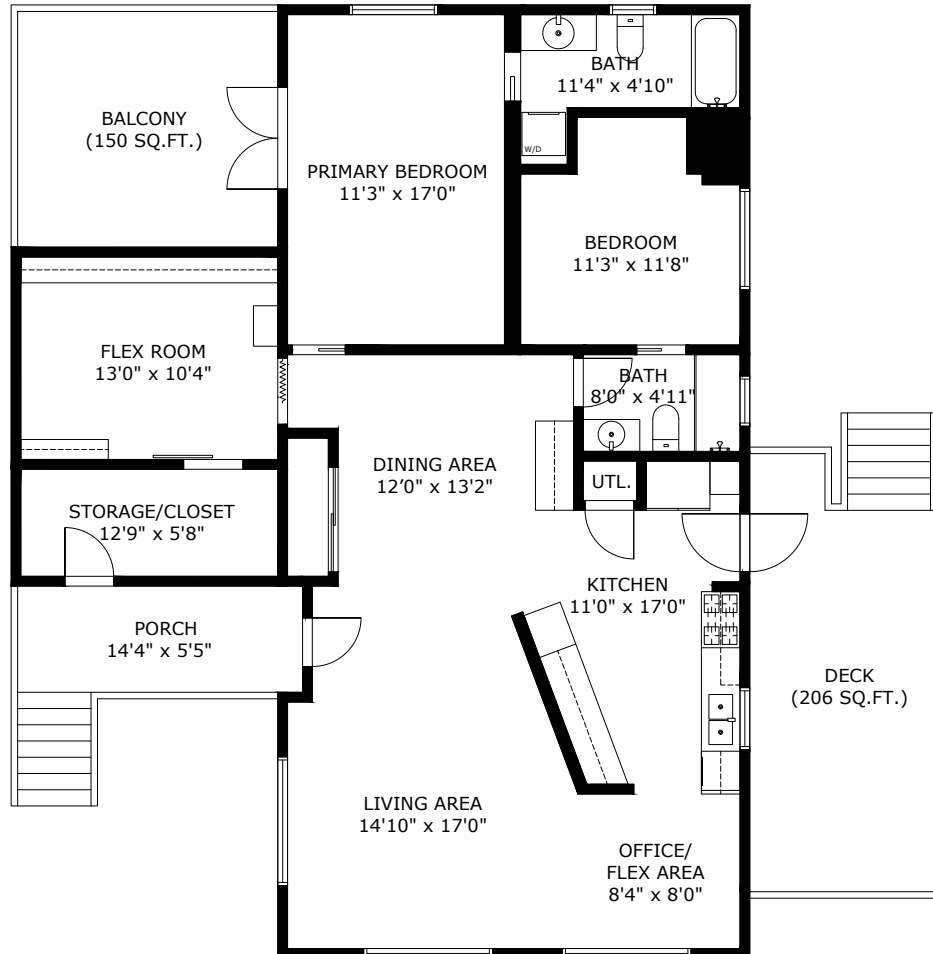


BATHROOMS

1,373



TOTAL SQ.FT.



340-1840 160 ST SURREY BC V4A 4X4

Measurements are approximate and may not be to scale.
The floor plan illustration is not suitable for construction/architectural purposes.
This communication is not intended to cause or induce breach of an existing agency agreement



Professionally measured by 3D Immersive Marketing Ltd

Lead Floor Planner: *Sara Alexander*
Quality Assurance: *Dianne Graham*