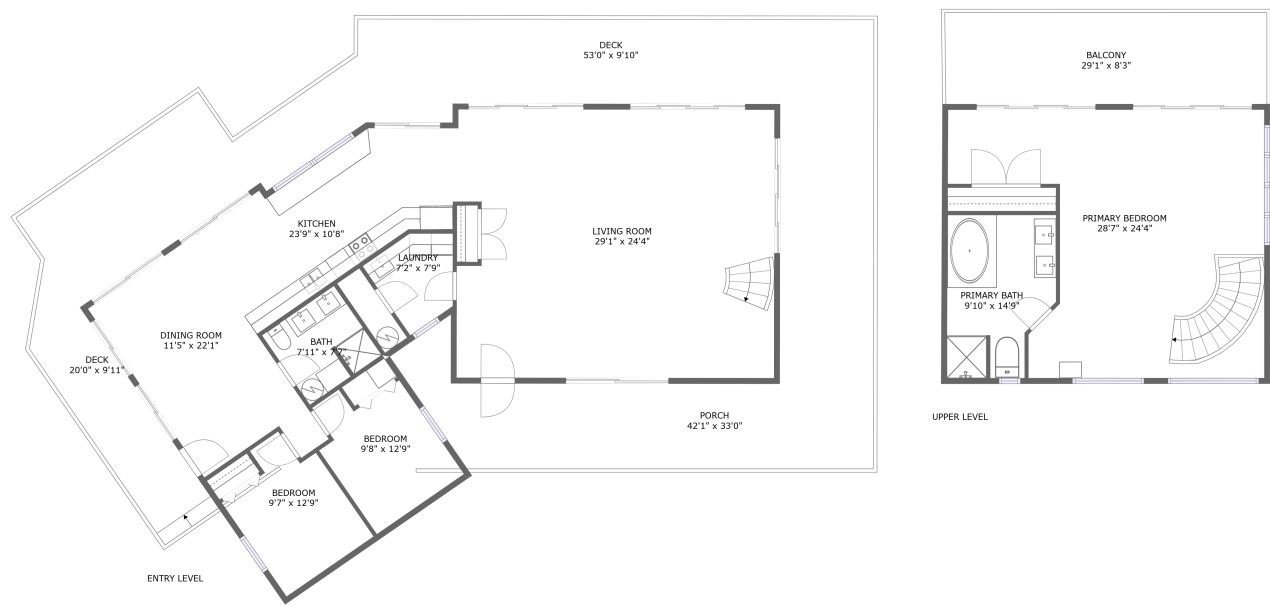
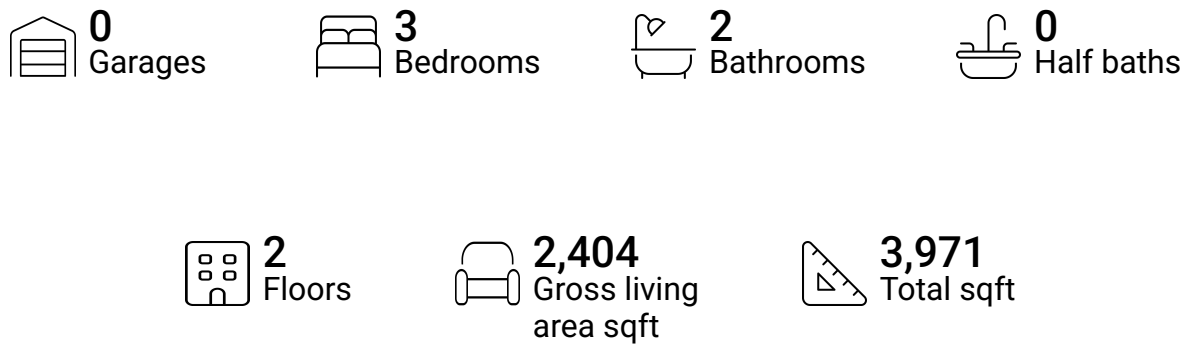


Home report

510 Crestview Rd, Crafts Point, Wirtz, Franklin County, Virginia,  
United States, 24184

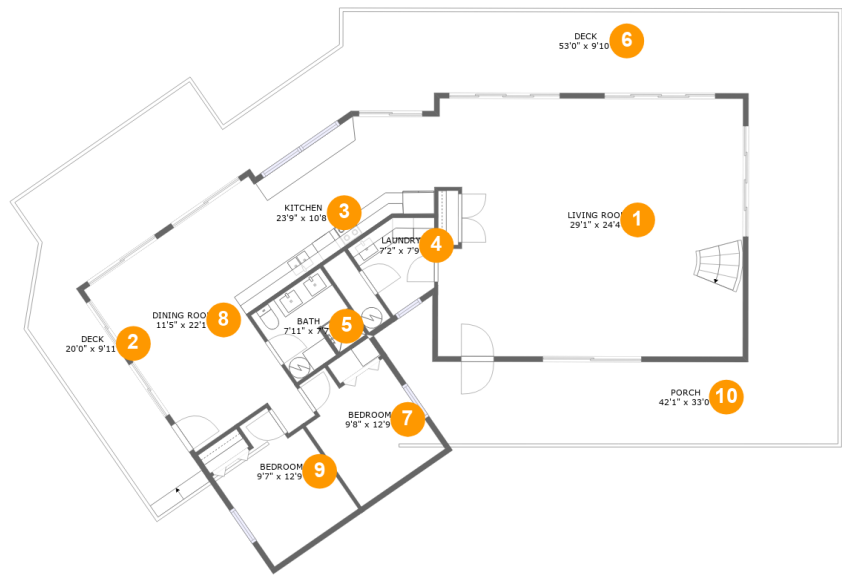


Property summary



Home report

510 Crestview Rd, Crafts Point, Wirtz, Franklin County, Virginia,  
United States, 24184



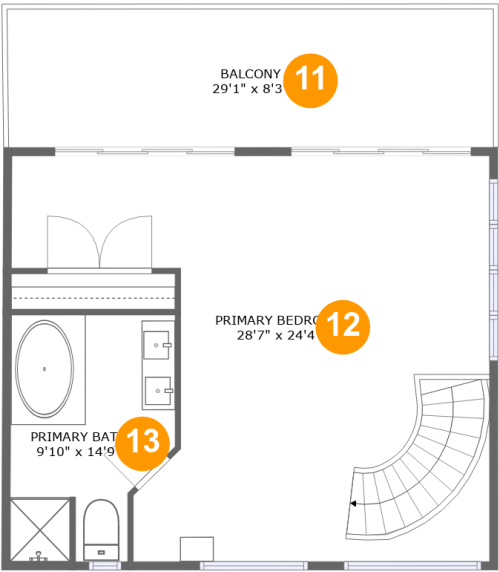
Room dimensions

Floor 1 Total sqft: 2976    Living area: 1651

#		Max Dimensions	sqft	Included
1	Living Room	29'1" x 24'4"	689 sq. ft	Yes
2	Deck	20'0" x 9'11"	345 sq. ft	No
3	Kitchen	23'9" x 10'8"	234 sq. ft	Yes
4	Laundry	7'2" x 7'9"	51 sq. ft	Yes
5	Bath	7'11" x 7'7"	60 sq. ft	Yes
6	Deck	53'0" x 9'10"	438 sq. ft	No
7	Bedroom	9'8" x 12'9"	105 sq. ft	Yes
8	Dining Room	11'5" x 22'1"	220 sq. ft	Yes
9	Bedroom	9'7" x 12'9"	105 sq. ft	Yes
10	Porch	42'1" x 33'0"	542 sq. ft	No

Home report

510 Crestview Rd, Crafts Point, Wirtz, Franklin County, Virginia,  
United States, 24184

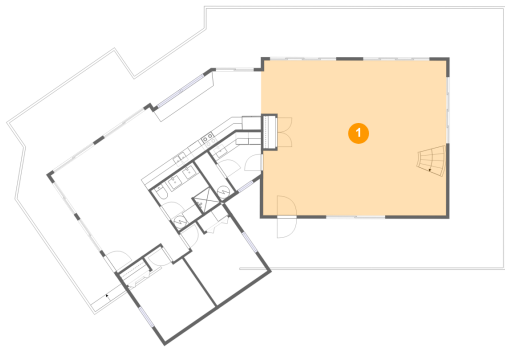


Room dimensions

Floor 2 Total sqft: 995    Living area: 753

#		Max Dimensions	sqft	Included
11	Balcony	29'1" x 8'3"	242 sq. ft	No
12	Primary Bedroom	28'7" x 24'4"	534 sq. ft	Yes
13	Primary Bath	9'10" x 14'9"	129 sq. ft	Yes

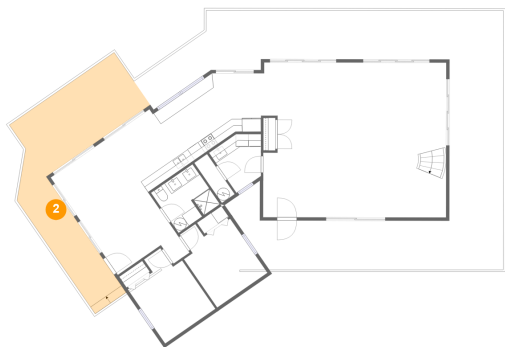
1 Floor 1 - Living Room



Max Dimensions: 29'1" x 24'4"  
Calculated Area: 689 sq. ft  
Included: Yes

Heated: Yes  
Finished: Yes  
Enclosed: Yes  
Contiguous: Yes  
Permitted: Yes  
Wet space: No  
Addition: No  
Conversion: No

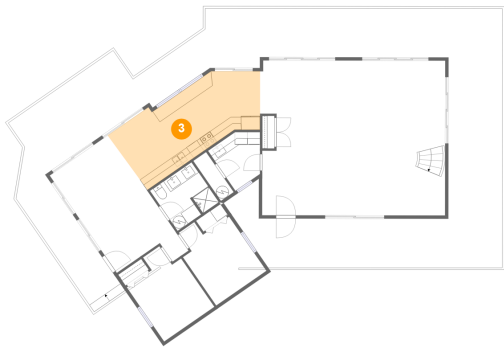
2 Floor 1 - Deck



Max Dimensions: 20'0" x 9'11"  
Calculated Area: 345 sq. ft  
Included: No

Heated: No  
Finished: Yes  
Enclosed: No  
Contiguous: Yes  
Permitted: Yes  
Wet space: No  
Addition: No  
Conversion: No

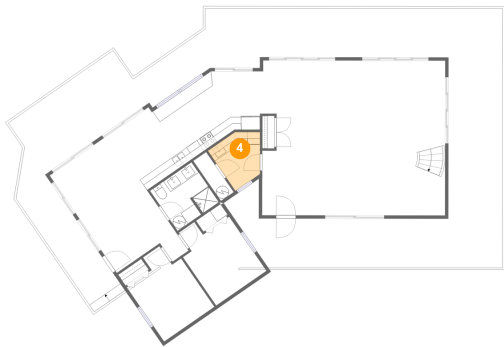
3 Floor 1 - Kitchen



Max Dimensions: 23'9" x 10'8"  
Calculated Area: 234 sq. ft  
Included: Yes

Heated: Yes  
Finished: Yes  
Enclosed: Yes  
Contiguous: Yes  
Permitted: Yes  
Wet space: No  
Addition: No  
Conversion: No

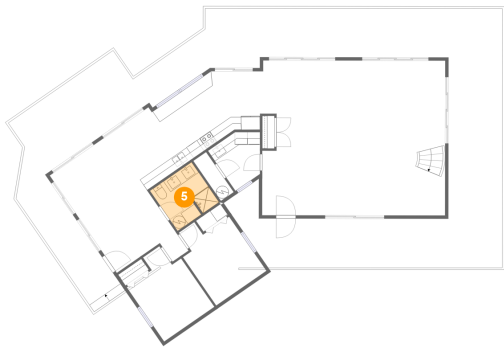
4 Floor 1 - Laundry



Max Dimensions: 7'2" x 7'9"  
Calculated Area: 51 sq. ft  
Included: Yes

Heated: Yes  
Finished: Yes  
Enclosed: Yes  
Contiguous: Yes  
Permitted: Yes  
Wet space: No  
Addition: No  
Conversion: No

5 Floor 1 - Bath

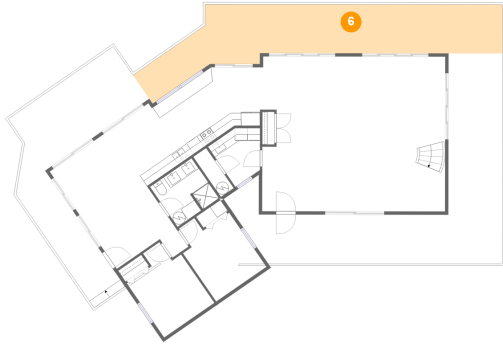


Max Dimensions: 7'11" x 7'7"  
Calculated Area: 60 sq. ft  
Included: Yes

Heated: Yes  
Finished: Yes  
Enclosed: Yes  
Contiguous: Yes  
Permitted: Yes  
Wet space: Yes  
Addition: No  
Conversion: No

510 Crestview Rd, Crafts Point, Wirtz, Franklin County, Virginia,  
United States, 24184

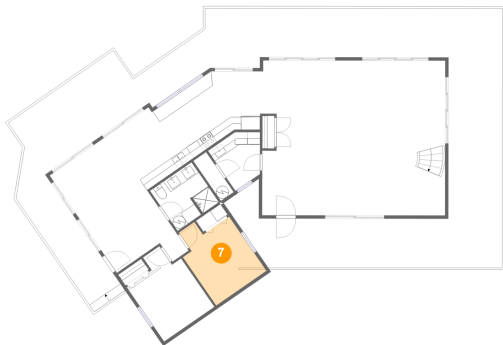
## 6 Floor 1 - Deck



Max Dimensions: 53'0" x 9'10"  
Calculated Area: 438 sq. ft  
Included: No

Heated: No  
Finished: Yes  
Enclosed: No  
Contiguous: Yes  
Permitted: Yes  
Wet space: No  
Addition: No  
Conversion: No

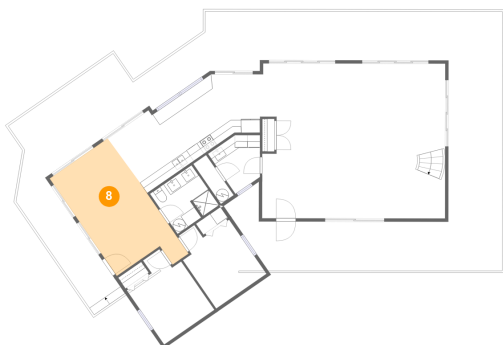
## 7 Floor 1 - Bedroom



Max Dimensions: 9'8" x 12'9"  
Calculated Area: 105 sq. ft  
Included: Yes

Heated: Yes  
Finished: Yes  
Enclosed: Yes  
Contiguous: Yes  
Permitted: Yes  
Wet space: No  
Addition: No  
Conversion: No

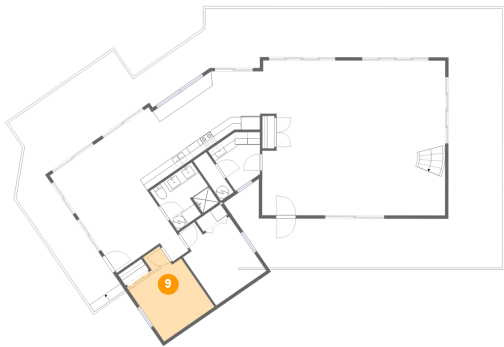
## 8 Floor 1 - Dining Room



Max Dimensions: 11'5" x 22'1"  
Calculated Area: 220 sq. ft  
Included: Yes

Heated: Yes  
Finished: Yes  
Enclosed: Yes  
Contiguous: Yes  
Permitted: Yes  
Wet space: No  
Addition: No  
Conversion: No

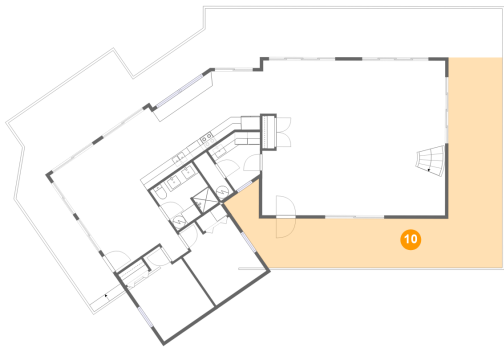
9 Floor 1 - Bedroom



Max Dimensions: 9'7" x 12'9"  
Calculated Area: 105 sq. ft  
Included: Yes

Heated: Yes  
Finished: Yes  
Enclosed: Yes  
Contiguous: Yes  
Permitted: Yes  
Wet space: No  
Addition: No  
Conversion: No

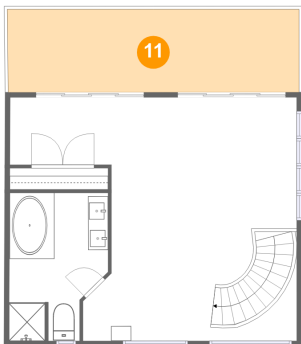
10 Floor 1 - Porch



Max Dimensions: 42'1" x 33'0"  
Calculated Area: 542 sq. ft  
Included: No

Heated: No  
Finished: Yes  
Enclosed: No  
Contiguous: Yes  
Permitted: Yes  
Wet space: No  
Addition: No  
Conversion: No

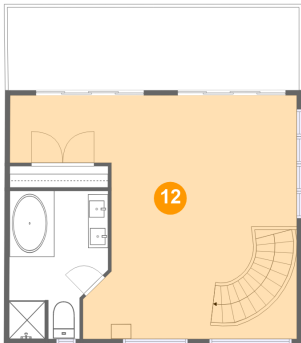
11 Floor 2 - Balcony



Max Dimensions: 29'1" x 8'3"  
Calculated Area: 242 sq. ft  
Included: No

Heated: No  
Finished: Yes  
Enclosed: No  
Contiguous: Yes  
Permitted: Yes  
Wet space: No  
Addition: No  
Conversion: No

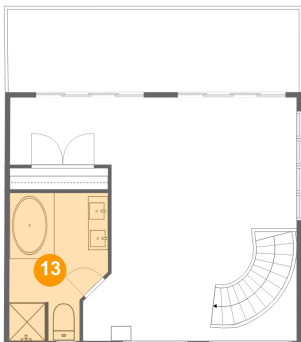
12 Floor 2 - Primary Bedroom



Max Dimensions: 28'7" x 24'4"  
Calculated Area: 534 sq. ft  
Included: Yes

Heated: Yes  
Finished: Yes  
Enclosed: Yes  
Contiguous: Yes  
Permitted: Yes  
Wet space: No  
Addition: No  
Conversion: No

13 Floor 2 - Primary Bath



Max Dimensions: 9'10" x 14'9"  
Calculated Area: 129 sq. ft  
Included: Yes

Heated: Yes  
Finished: Yes  
Enclosed: Yes  
Contiguous: Yes  
Permitted: Yes  
Wet space: Yes  
Addition: No  
Conversion: No