

BASEMENT
63'3" x 44'0"

TOTAL: 6220 sq. ft
BELOW GROUND: 2195 sq. ft, FLOOR 2: 2190 sq. ft, FLOOR 3: 1835 sq. ft
EXCLUDED AREAS: GARAGE: 664 sq. ft, OPEN TO BELOW: 450 sq. ft

Sizes and Dimensions are approximate

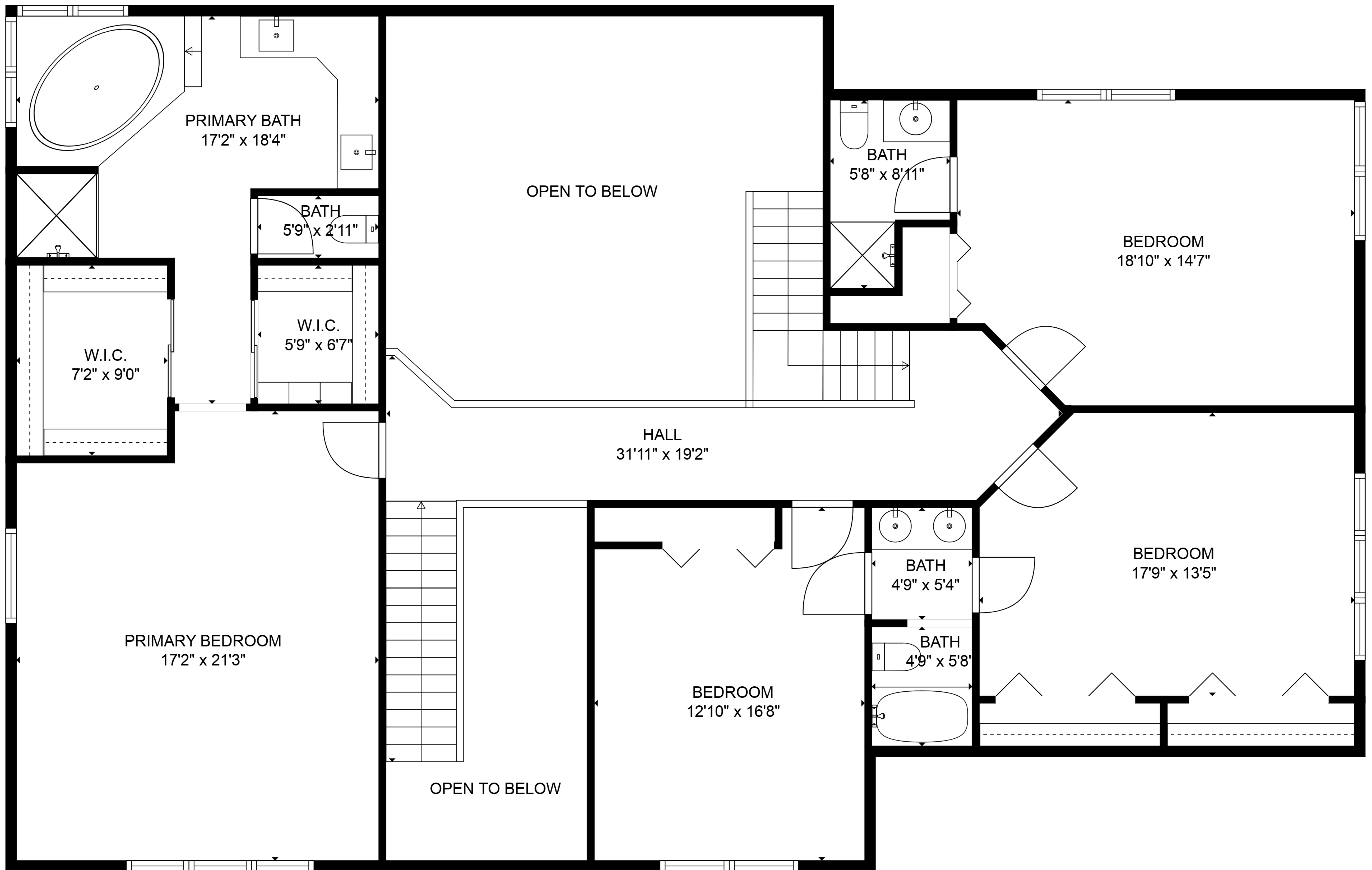




TOTAL: 6220 sq. ft
 BELOW GROUND: 2195 sq. ft, FLOOR 2: 2190 sq. ft, FLOOR 3: 1835 sq. ft
 EXCLUDED AREAS: GARAGE: 664 sq. ft, OPEN TO BELOW: 450 sq. ft

Sizes and Dimensions are approximate



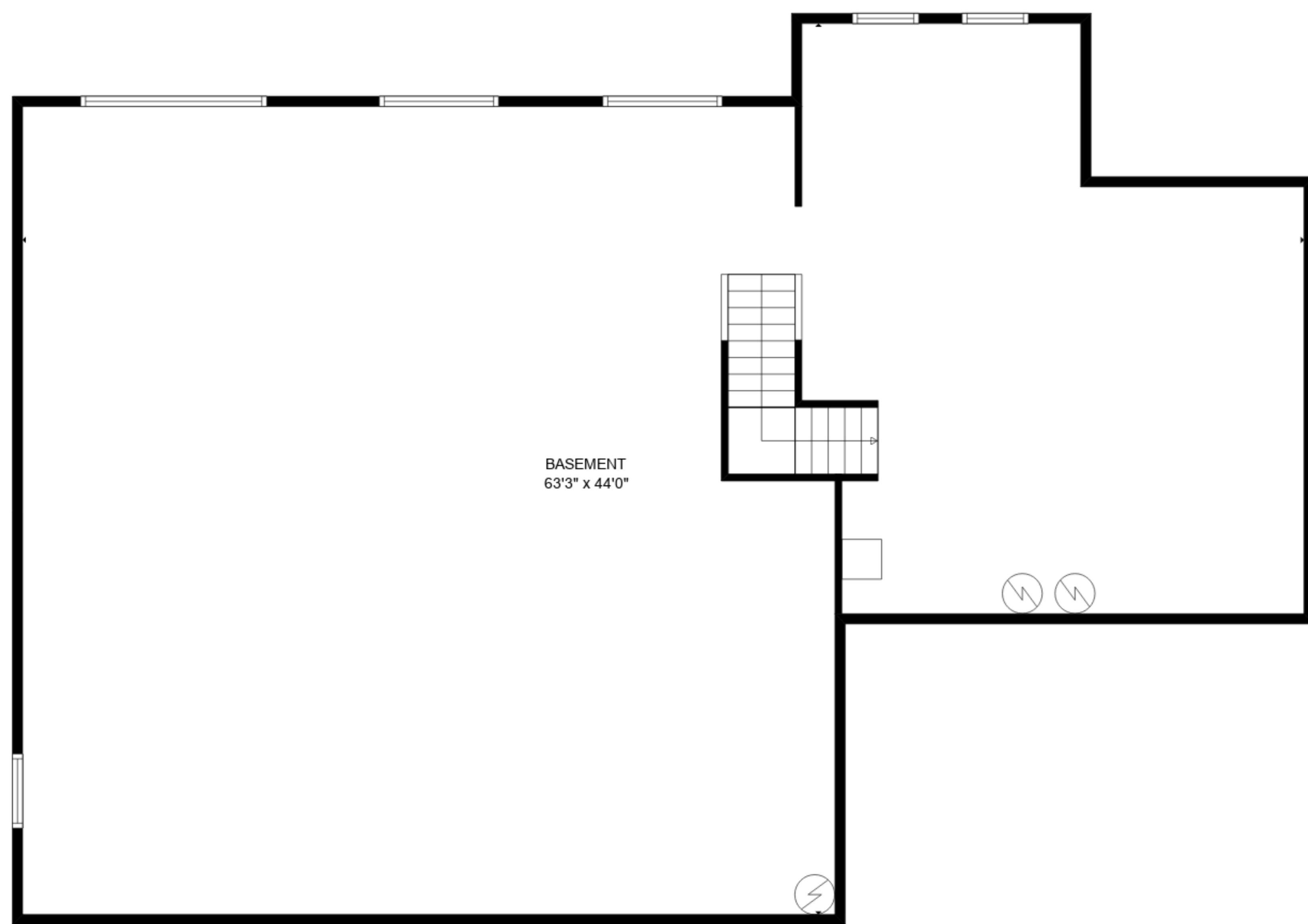


TOTAL: 6220 sq. ft

BELOW GROUND: 2195 sq. ft, FLOOR 2: 2190 sq. ft, FLOOR 3: 1835 sq. ft
 EXCLUDED AREAS: GARAGE: 664 sq. ft, OPEN TO BELOW: 450 sq. ft

Sizes and Dimensions are approximate

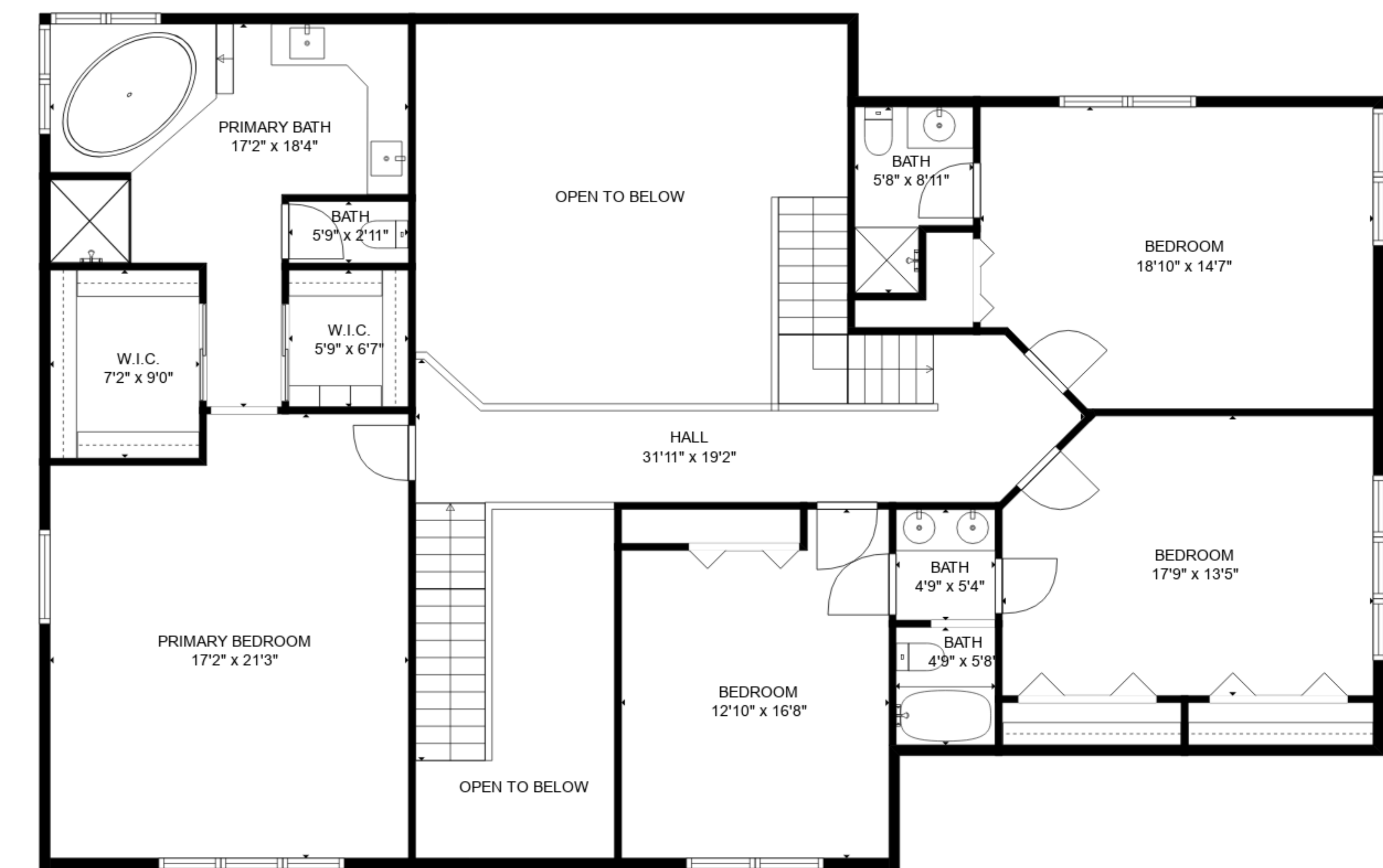




FLOOR 1



FLOOR 2



FLOOR 3

TOTAL: 6220 sq. ft
 BELOW GROUND: 2195 sq. ft, FLOOR 2: 2190 sq. ft, FLOOR 3: 1835 sq. ft
 EXCLUDED AREAS: GARAGE: 664 sq. ft, OPEN TO BELOW: 450 sq. ft

Sizes and Dimensions are approximate

