

21 Wickham's Fancy,Collinsville,CT,US



Property summary

0 Garages

3 Bedrooms

3 Bathrooms

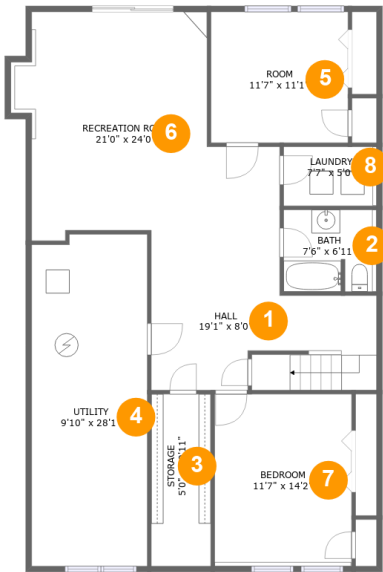
0 Half baths

2 Floors

2,823 Gross living area sqft

3,031 Total sqft

21 Wickham's Fancy,Collinsville,CT,US

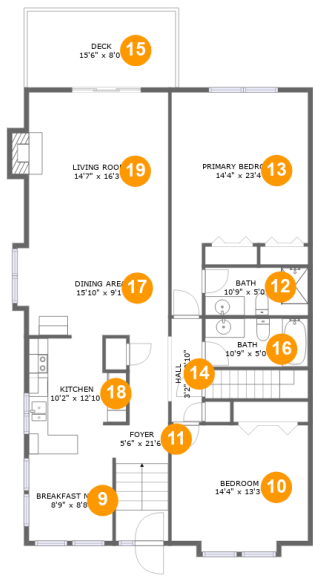


Room dimensions

Floor 1 Total sqft: 1444 Living area: 1368

#		Dimensions	sqft	Counted as living area
1	Hall	19'1" x 8'0"	140 sq. ft	Yes
2	Bath	7'6" x 6'11"	54 sq. ft	Yes
3	Storage	5'0" x 10'11"	73 sq. ft	No
4	Utility	9'10" x 28'1"	272 sq. ft	Yes
5	Room	11'7" x 11'1"	129 sq. ft	Yes
6	Recreation Room	21'0" x 24'0"	389 sq. ft	Yes
7	Bedroom	11'7" x 14'2"	169 sq. ft	Yes
8	Laundry	7'7" x 5'0"	39 sq. ft	Yes

21 Wickham's Fancy,Collinsville,CT,US



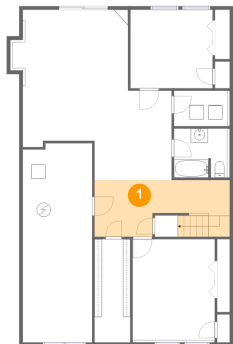
Room dimensions

Floor 2 Total sqft: 1587 Living area: 1455

#		Dimensions	sqft	Counted as living area
9	Breakfast Nook	8'9" x 8'8"	76 sq. ft	Yes
10	Bedroom	14'4" x 13'3"	182 sq. ft	Yes
11	Foyer	5'6" x 21'6"	105 sq. ft	Yes
12	Bath	10'9" x 5'0"	54 sq. ft	Yes
13	Primary Bedroom	14'4" x 23'4"	250 sq. ft	Yes
14	Hall	3'2" x 10'10"	35 sq. ft	Yes
15	Deck	15'6" x 8'0"	124 sq. ft	No
16	Bath	10'9" x 5'0"	54 sq. ft	Yes
17	Dining Area	15'10" x 9'1"	140 sq. ft	Yes
18	Kitchen	10'2" x 12'10"	115 sq. ft	Yes
19	Living Room	14'7" x 16'3"	245 sq. ft	Yes

21 Wickham's Fancy,Collinsville,CT,US

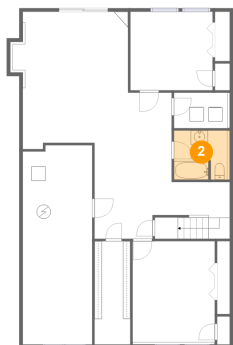
1 Floor 1 - Hall



Dimensions: 19'1" x 8'0"
Area: 140 sq. ft
Counted as living area: Yes

Heated: Yes
Finished: Yes
Enclosed: Yes
Contiguous: Yes
Permitted: Yes
Wet space: No
Addition: No
Conversion: No

2 Floor 1 - Bath

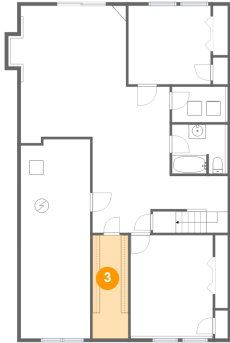


Dimensions: 7'6" x 6'11"
Area: 54 sq. ft
Counted as living area: Yes

Heated: Yes
Finished: Yes
Enclosed: Yes
Contiguous: Yes
Permitted: Yes
Wet space: Yes
Addition: No
Conversion: No

21 Wickham's Fancy, Collinsville, CT, US

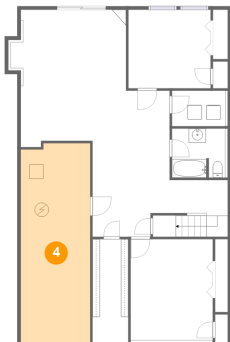
3 Floor 1 - Storage



Dimensions: 5'0" x 10'11"
Area: 73 sq. ft
Counted as living area: No

Heated: No
Finished: No
Enclosed: No
Contiguous: Yes
Permitted: Yes
Wet space: No
Addition: No
Conversion: No

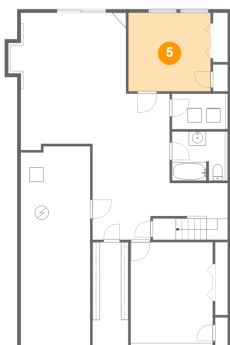
4 Floor 1 - Utility



Dimensions: 9'10" x 28'1"
Area: 272 sq. ft
Counted as living area: Yes

Heated: Yes
Finished: Yes
Enclosed: Yes
Contiguous: Yes
Permitted: Yes
Wet space: No
Addition: No
Conversion: No

5 Floor 1 - Room

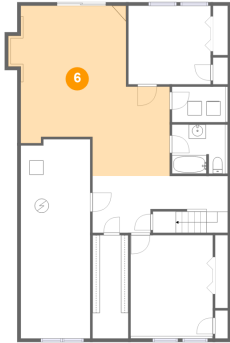


Dimensions: 11'7" x 11'1"
Area: 129 sq. ft
Counted as living area: Yes

Heated: Yes
Finished: Yes
Enclosed: Yes
Contiguous: Yes
Permitted: Yes
Wet space: No
Addition: No
Conversion: No

21 Wickham's Fancy, Collinsville, CT, US

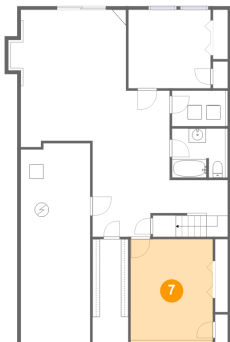
6 Floor 1 - Recreation Room



Dimensions: 21'0" x 24'0"
Area: 389 sq. ft
Counted as living area: Yes

Heated: Yes
Finished: Yes
Enclosed: Yes
Contiguous: Yes
Permitted: Yes
Wet space: No
Addition: No
Conversion: No

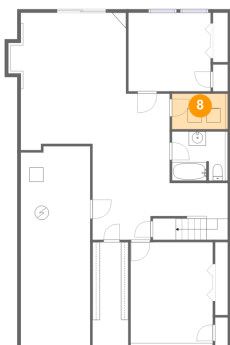
7 Floor 1 - Bedroom



Dimensions: 11'7" x 14'2"
Area: 169 sq. ft
Counted as living area: Yes

Heated: Yes
Finished: Yes
Enclosed: Yes
Contiguous: Yes
Permitted: Yes
Wet space: No
Addition: No
Conversion: No

8 Floor 1 - Laundry



Dimensions: 7'7" x 5'0"
Area: 39 sq. ft
Counted as living area: Yes

Heated: Yes
Finished: Yes
Enclosed: Yes
Contiguous: Yes
Permitted: Yes
Wet space: No
Addition: No
Conversion: No

21 Wickham's Fancy, Collinsville, CT, US

9 Floor 2 - Breakfast Nook



Dimensions: 8'9" x 8'8"
Area: 76 sq. ft
Counted as living area: Yes

Heated: Yes
Finished: Yes
Enclosed: Yes
Contiguous: Yes
Permitted: Yes
Wet space: No
Addition: No
Conversion: No

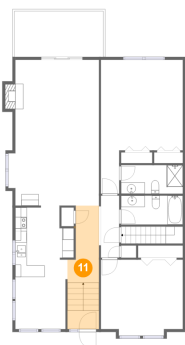
10 Floor 2 - Bedroom



Dimensions: 14'4" x 13'3"
Area: 182 sq. ft
Counted as living area: Yes

Heated: Yes
Finished: Yes
Enclosed: Yes
Contiguous: Yes
Permitted: Yes
Wet space: No
Addition: No
Conversion: No

11 Floor 2 - Foyer



Dimensions: 5'6" x 21'6"
Area: 105 sq. ft
Counted as living area: Yes

Heated: Yes
Finished: Yes
Enclosed: Yes
Contiguous: Yes
Permitted: Yes
Wet space: No
Addition: No
Conversion: No

21 Wickham's Fancy, Collinsville, CT, US

12 Floor 2 - Bath



Dimensions: 10'9" x 5'0"
Area: 54 sq. ft
Counted as living area: Yes

Heated: Yes
Finished: Yes
Enclosed: Yes
Contiguous: Yes
Permitted: Yes
Wet space: Yes
Addition: No
Conversion: No

13 Floor 2 - Primary Bedroom



Dimensions: 14'4" x 23'4"
Area: 250 sq. ft
Counted as living area: Yes

Heated: Yes
Finished: Yes
Enclosed: Yes
Contiguous: Yes
Permitted: Yes
Wet space: No
Addition: No
Conversion: No

14 Floor 2 - Hall

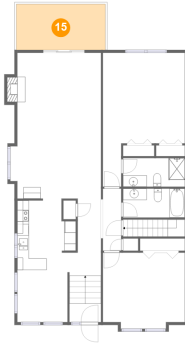


Dimensions: 3'2" x 10'10"
Area: 35 sq. ft
Counted as living area: Yes

Heated: Yes
Finished: Yes
Enclosed: Yes
Contiguous: Yes
Permitted: Yes
Wet space: No
Addition: No
Conversion: No

21 Wickham's Fancy, Collinsville, CT, US

15 Floor 2 - Deck



Dimensions: 15'6" x 8'0"
Area: 124 sq. ft
Counted as living area: No

Heated: No
Finished: Yes
Enclosed: No
Contiguous: Yes
Permitted: Yes
Wet space: No
Addition: No
Conversion: No

16 Floor 2 - Bath



Dimensions: 10'9" x 5'0"
Area: 54 sq. ft
Counted as living area: Yes

Heated: Yes
Finished: Yes
Enclosed: Yes
Contiguous: Yes
Permitted: Yes
Wet space: Yes
Addition: No
Conversion: No

17 Floor 2 - Dining Area



Dimensions: 15'10" x 9'1"
Area: 140 sq. ft
Counted as living area: Yes

Heated: Yes
Finished: Yes
Enclosed: Yes
Contiguous: Yes
Permitted: Yes
Wet space: No
Addition: No
Conversion: No

21 Wickham's Fancy,Collinsville,CT,US

18 Floor 2 - Kitchen



Dimensions: 10'2" x 12'10"
Area: 115 sq. ft
Counted as living area: Yes

Heated: Yes
Finished: Yes
Enclosed: Yes
Contiguous: Yes
Permitted: Yes
Wet space: No
Addition: No
Conversion: No

19 Floor 2 - Living Room



Dimensions: 14'7" x 16'3"
Area: 245 sq. ft
Counted as living area: Yes

Heated: Yes
Finished: Yes
Enclosed: Yes
Contiguous: Yes
Permitted: Yes
Wet space: No
Addition: No
Conversion: No