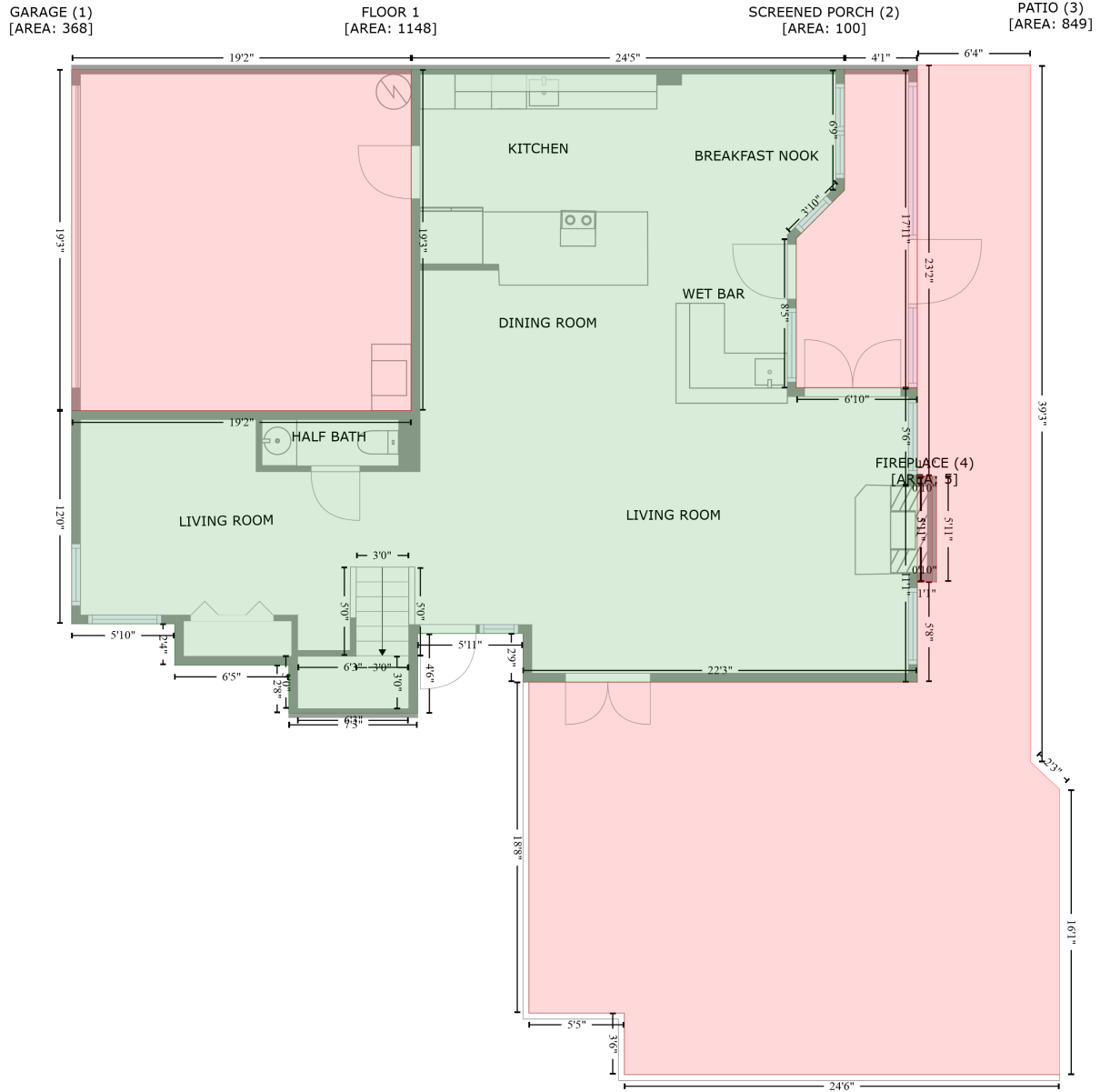


1610 Northeast 1st Street, Victoria Park, Fort Lauderdale, Broward County, Florida, United States, 33301, 4

Gross Living Area: 2308 sq. ft



| Space | Area (sq. ft) | Calculation |
|--------------------------|---------------|--|
| FLOOR 1 (Living area) | 1148 | Coordinate Polygon Area Algorithm using inches $-((595.8 + 595.8) * (31.6 - 113.1) + (595.8 + 563.1) * (113.1 - 145.8) + (563.1 + 563.1) * (145.8 - 246.8) + (563.1 + 645) * (246.8 - 246.8) + (645 + 645) * (246.8 - 312.6) + (645 + 645) * (312.6 - 445.8) + (645 + 378.4) * (445.8 - 445.8) + (378.4 + 378.4) * (445.8 - 412.9) + (378.4 + 307.2) * (412.9 - 412.9) + (307.2 + 307.2) * (412.9 - 466.8) + (307.2 + 220) * (466.8 - 466.8) + (220 + 220) * (466.8 - 434.3) + (220 + 142.8) * (434.3 - 434.3) + (142.8 + 142.8) * (434.3 - 406.4) + (142.8 + 73.1) * (406.4 - 406.4) + (73.1 + 73.1) * (406.4 - 262.3) + (73.1 + 302.8) * (262.3 - 262.3) + (302.8 + 302.8) * (262.3 - 31.6) + (302.8 + 595.8) * (31.6 - 31.6)) * 0.5 * 0.00694$ |

1610 Northeast 1st Street, Victoria Park, Fort Lauderdale, Broward County, Florida, United States, 33301, 4

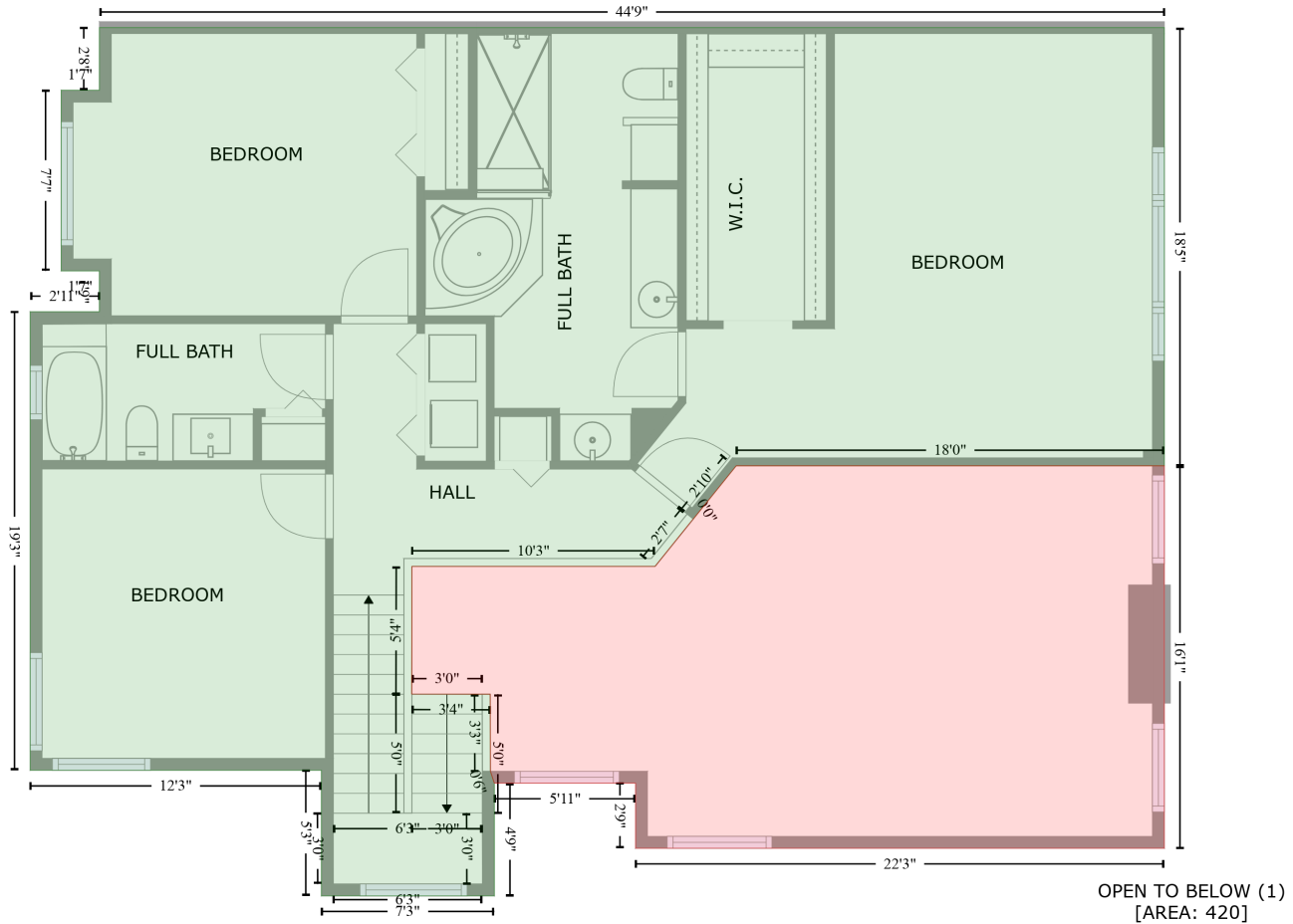
Gross Living Area: 2308 sq. ft

| Space | Area (sq. ft) | Calculation <small>Coordinate Polygon Area Algorithm using inches</small> |
|-------------------------------------|---------------|--|
| GARAGE (Non-living area) | 368 | $-((302.8 + 302.8) * (31.6 - 262.3) + (302.8 + 73.1) * (262.3 - 262.3) + (73.1 + 73.1) * (262.3 - 31.6) + (73.1 + 302.8) * (31.6 - 31.6)) * 0.5 * 0.00694$ |
| SCREENED PORCH (Non-living area) | 100 | $-((645 + 645) * (31.6 - 246.8) + (645 + 563.1) * (246.8 - 246.8) + (563.1 + 563.1) * (246.8 - 145.8) + (563.1 + 595.8) * (145.8 - 113.1) + (595.8 + 595.8) * (113.1 - 31.6) + (595.8 + 645) * (31.6 - 31.6)) * 0.5 * 0.00694$ |
| PATIO (Non-living area) | 849 | $-((721.4 + 721.4) * (28.6 - 499.7) + (721.4 + 741.2) * (499.7 - 518.3) + (741.2 + 741.2) * (518.3 - 711.2) + (741.2 + 446.9) * (711.2 - 711.2) + (446.9 + 446.9) * (711.2 - 669.6) + (446.9 + 382.4) * (669.6 - 669.6) + (382.4 + 382.4) * (669.6 - 445.8) + (382.4 + 645) * (445.8 - 445.8) + (645 + 645) * (445.8 - 378) + (645 + 658) * (378 - 378) + (658 + 658) * (378 - 306.6) + (658 + 645) * (306.6 - 306.6) + (645 + 645) * (306.6 - 28.6) + (645 + 721.4) * (28.6 - 28.6)) * 0.5 * 0.00694$ |
| FIREPLACE (Non-living area) | 5 | $-((655 + 655) * (306.6 - 378) + (655 + 645) * (378 - 378) + (645 + 645) * (378 - 306.6) + (645 + 655) * (306.6 - 306.6)) * 0.5 * 0.00694$ |

1610 Northeast 1st Street, Victoria Park, Fort Lauderdale, Broward County, Florida, United States, 33301, 4

Gross Living Area: 2308 sq. ft

FLOOR 2
[AREA: 1160]



| Space | Area (sq. ft) | Calculation |
|------------------------------------|---------------|--|
| FLOOR 2 (Living area) | 1160 | $ \begin{aligned} & -((645 + 645) * (31.6 - 252.8) + (645 + 429.1) * (252.8 - 252.8) + (429.1 + 407.5) * (252.8 - 279.6) \\ & + (407.5 + 407.5) * (279.6 - 279.5) + (407.5 + 388.2) * (279.5 - 303.5) + (388.2 + 265.6) * (303.5 - \\ & 303.5) + (265.6 + 265.5) * (303.5 - 367.9) + (265.5 + 305.1) * (367.9 - 368) + (305.1 + 305.2) * \\ & (368 - 406.9) + (305.2 + 307.2) * (406.9 - 412.9) + (307.2 + 307.2) * (412.9 - 469.8) + (307.2 + \\ & 220) * (469.8 - 469.8) + (220 + 220) * (469.8 - 406.4) + (220 + 73.1) * (406.4 - 406.4) + (73.1 + \\ & 73.1) * (406.4 - 175) + (73.1 + 108) * (175 - 175) + (108 + 108) * (175 - 154.4) + (108 + 88.8) * \\ & (154.4 - 154.4) + (88.8 + 88.8) * (154.4 - 63.3) + (88.8 + 108) * (63.3 - 63.3) + (108 + 108) * (63.3 \\ & - 31.6) + (108 + 645) * (31.6 - 31.6)) * 0.5 * 0.00694 \end{aligned} $ |
| OPEN TO BELOW (Non-living area) | 420 | $ \begin{aligned} & -((645 + 645) * (252.8 - 445.8) + (645 + 378.4) * (445.8 - 445.8) + (378.4 + 378.4) * (445.8 - \\ & 412.9) + (378.4 + 307.2) * (412.9 - 412.9) + (307.2 + 305.2) * (412.9 - 406.9) + (305.2 + 305.1) * \\ & (406.9 - 368) + (305.1 + 265.5) * (368 - 367.9) + (265.5 + 265.6) * (367.9 - 303.5) + (265.6 + \\ & 388.2) * (303.5 - 303.5) + (388.2 + 407.5) * (303.5 - 279.5) + (407.5 + 407.5) * (279.5 - 279.6) + \\ & (407.5 + 429.1) * (279.6 - 252.8) + (429.1 + 645) * (252.8 - 252.8)) * 0.5 * 0.00694 \end{aligned} $ |