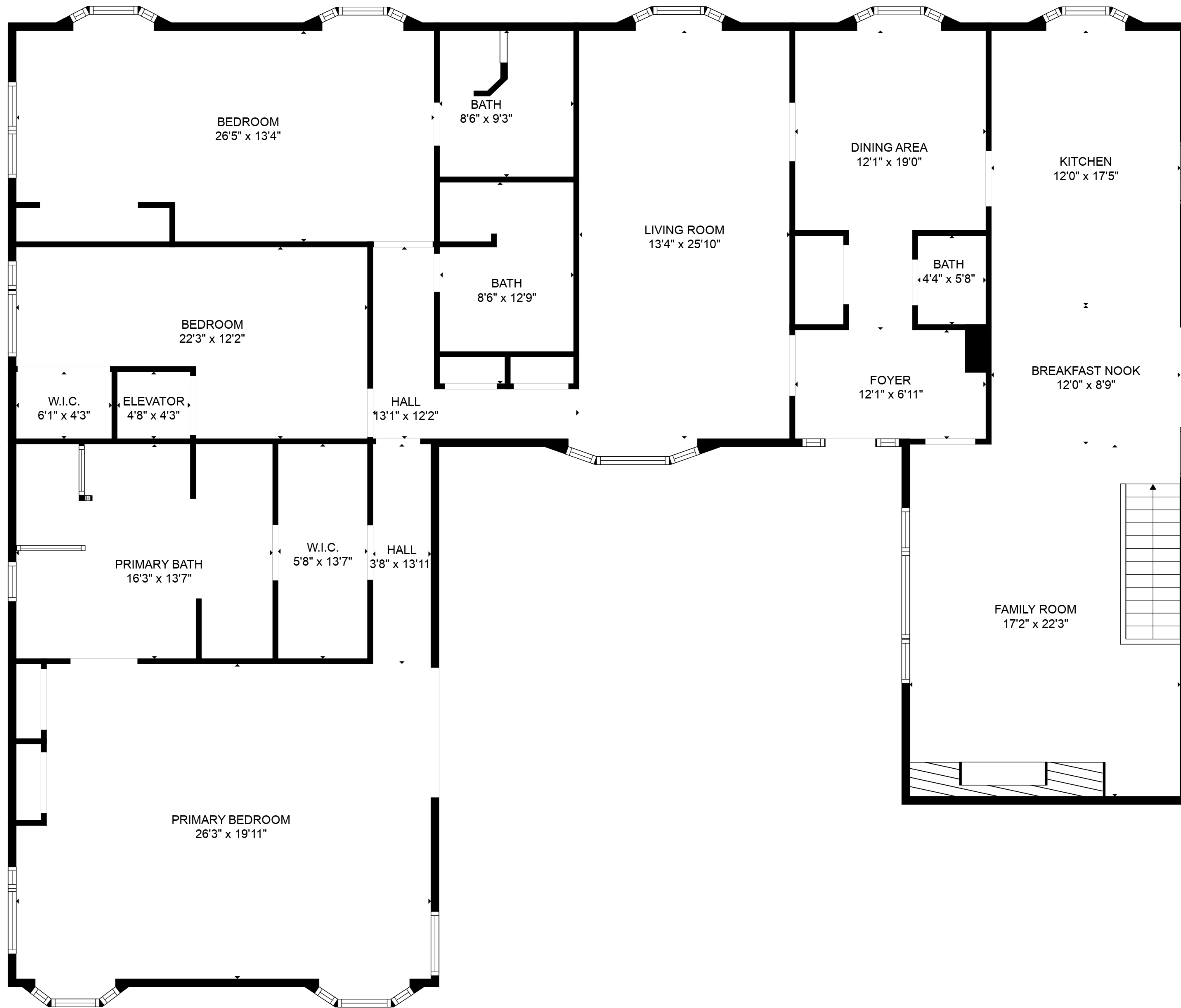
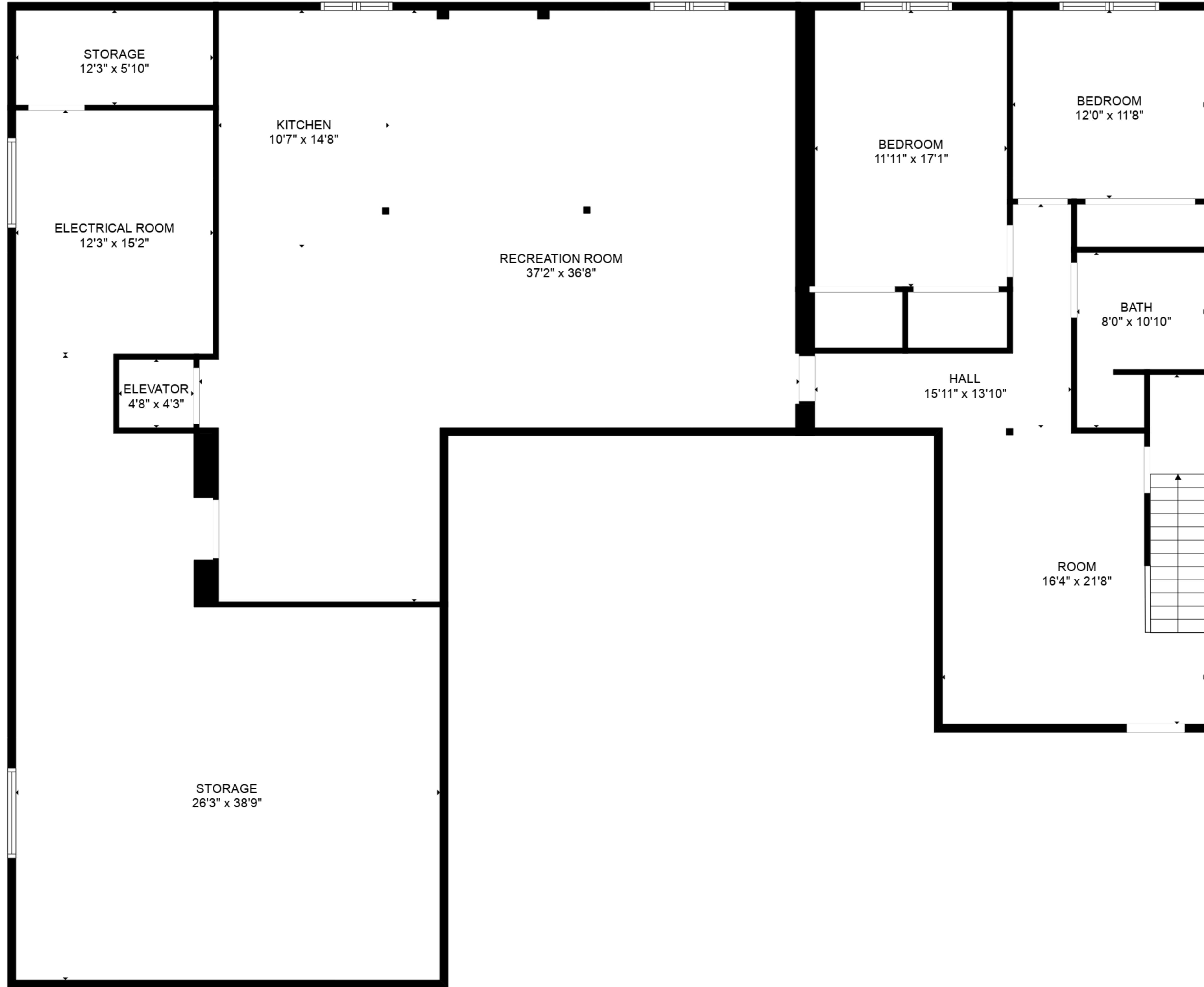


TOTAL: 5231 sq. ft  
 BELOW GROUND: 2054 sq. ft, FLOOR 2: 3177 sq. ft  
 EXCLUDED AREAS: STORAGE: 847 sq. ft, ELEVATOR: 41 sq. ft, ELECTRICAL ROOM: 185 sq. ft,  
 BAY WINDOW: 49 sq. ft



TOTAL: 5231 sq. ft  
 BELOW GROUND: 2054 sq. ft, FLOOR 2: 3177 sq. ft  
 EXCLUDED AREAS: STORAGE: 847 sq. ft, ELEVATOR: 41 sq. ft, ELECTRICAL ROOM: 185 sq. ft,  
 BAY WINDOW: 49 sq. ft



FLOOR 1



FLOOR 2

TOTAL: 5231 sq. ft  
 BELOW GROUND: 2054 sq. ft, FLOOR 2: 3177 sq. ft  
 EXCLUDED AREAS: STORAGE: 847 sq. ft, ELEVATOR: 41 sq. ft, ELECTRICAL ROOM: 185 sq. ft,  
 BAY WINDOW: 49 sq. ft