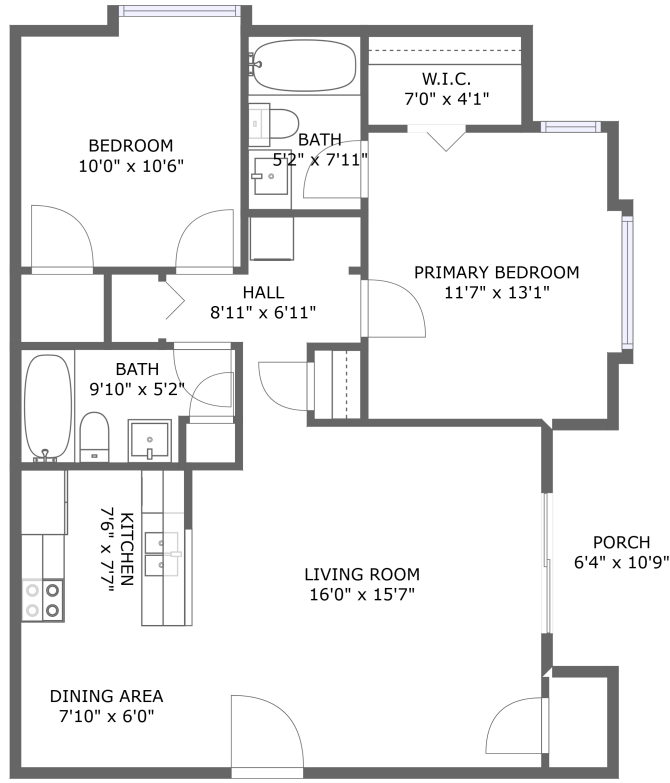



# 6025 Rock Glen Drive, Rockburn Commons, Elkridge, Howard County, Maryland, United States, 21075, 501



FLOOR 1

## Property summary


 **0** Garages


 **2** Bedrooms

 **2** Bathrooms

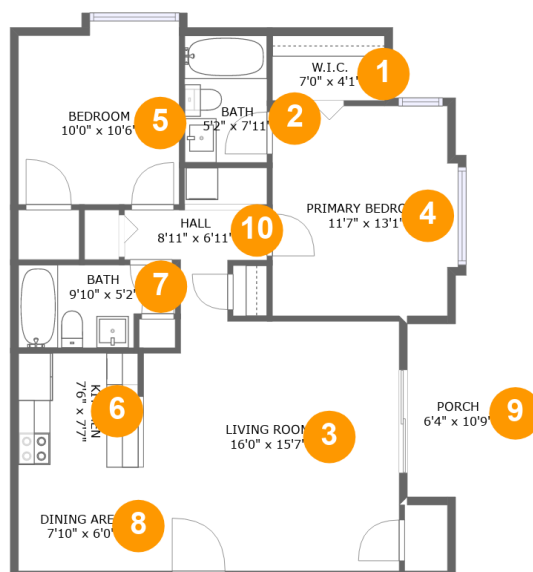
 **0** Half baths

 **1** Floors

 **851** Gross living area sqft

 **926** Total sqft

# 6025 Rock Glen Drive, Rockburn Commons, Elkridge, Howard County, Maryland, United States, 21075, 501



## Room dimensions

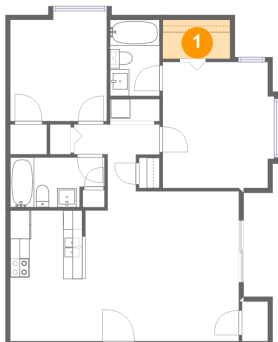
Floor 1

Total sqft: 926 Living area: 851

#		Dimensions	sqft	Counted as living area
1	Cl	7'0" x 4'1"	29 sq. ft	Yes
2	Bath	5'2" x 7'11"	41 sq. ft	Yes
3	Living Room	16'0" x 15'7"	245 sq. ft	Yes
4	Bedroom	11'7" x 13'1"	148 sq. ft	Yes
5	Bedroom	10'0" x 10'6"	106 sq. ft	Yes
6	Kitchen	7'6" x 7'7"	59 sq. ft	Yes
7	Bath	9'10" x 5'2"	45 sq. ft	Yes
8	Dining Room	7'10" x 6'0"	47 sq. ft	Yes
9	Outdoor	6'4" x 10'9"	69 sq. ft	No
10	Hall	8'11" x 6'11"	41 sq. ft	Yes

**6025 Rock Glen Drive, Rockburn Commons, Elkridge,  
Howard County, Maryland, United States, 21075, 501**

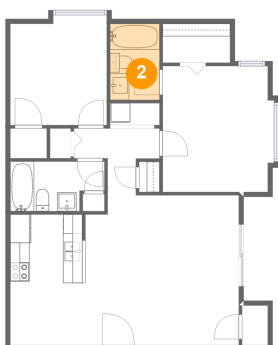
## 1 Floor 1 - Cl



**Dimensions:** 7'0" x 4'1"  
**Area:** 29 sq. ft  
**Counted as living area:** Yes

**Heated:** Yes  
**Finished:** Yes  
**Enclosed:** Yes  
**Contiguous:** Yes  
**Permitted:** Yes  
**Wet space:** No  
**Addition:** No  
**Conversion:** No

## 2 Floor 1 - Bath

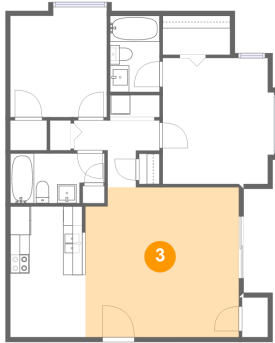


**Dimensions:** 5'2" x 7'11"  
**Area:** 41 sq. ft  
**Counted as living area:** Yes

**Heated:** Yes  
**Finished:** Yes  
**Enclosed:** Yes  
**Contiguous:** Yes  
**Permitted:** Yes  
**Wet space:** Yes  
**Addition:** No  
**Conversion:** No

# 6025 Rock Glen Drive, Rockburn Commons, Elkridge, Howard County, Maryland, United States, 21075, 501

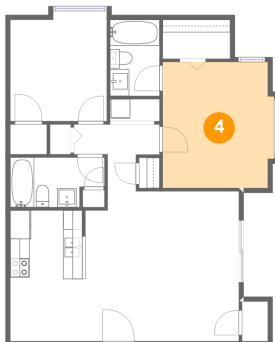
## 3 Floor 1 - Living Room



Dimensions: 16'0" x 15'7"  
Area: 245 sq. ft  
Counted as living area: Yes

Heated: Yes  
Finished: Yes  
Enclosed: Yes  
Contiguous: Yes  
Permitted: Yes  
Wet space: No  
Addition: No  
Conversion: No

## 4 Floor 1 - Bedroom



Dimensions: 11'7" x 13'1"  
Area: 148 sq. ft  
Counted as living area: Yes

Heated: Yes  
Finished: Yes  
Enclosed: Yes  
Contiguous: Yes  
Permitted: Yes  
Wet space: No  
Addition: No  
Conversion: No

## 5 Floor 1 - Bedroom

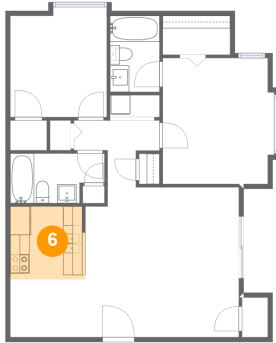


Dimensions: 10'0" x 10'6"  
Area: 106 sq. ft  
Counted as living area: Yes

Heated: Yes  
Finished: Yes  
Enclosed: Yes  
Contiguous: Yes  
Permitted: Yes  
Wet space: No  
Addition: No  
Conversion: No

# 6025 Rock Glen Drive, Rockburn Commons, Elkridge, Howard County, Maryland, United States, 21075, 501

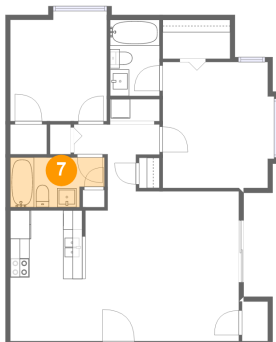
## 6 Floor 1 - Kitchen



Dimensions: 7'6" x 7'7"  
Area: 59 sq. ft  
Counted as living area: Yes

Heated: Yes  
Finished: Yes  
Enclosed: Yes  
Contiguous: Yes  
Permitted: Yes  
Wet space: No  
Addition: No  
Conversion: No

## 7 Floor 1 - Bath



Dimensions: 9'10" x 5'2"  
Area: 45 sq. ft  
Counted as living area: Yes

Heated: Yes  
Finished: Yes  
Enclosed: Yes  
Contiguous: Yes  
Permitted: Yes  
Wet space: Yes  
Addition: No  
Conversion: No

## 8 Floor 1 - Dining Room

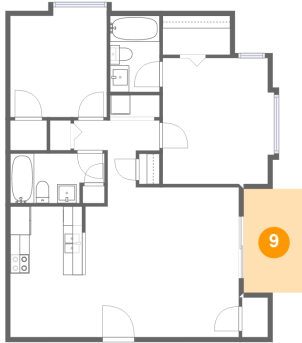


Dimensions: 7'10" x 6'0"  
Area: 47 sq. ft  
Counted as living area: Yes

Heated: Yes  
Finished: Yes  
Enclosed: Yes  
Contiguous: Yes  
Permitted: Yes  
Wet space: No  
Addition: No  
Conversion: No

**6025 Rock Glen Drive, Rockburn Commons, ElkrIDGE,  
Howard County, Maryland, United States, 21075, 501**

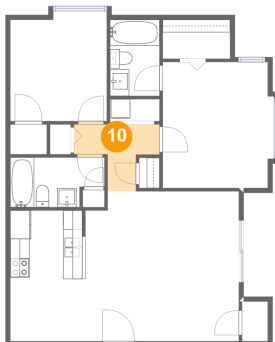
## 9 Floor 1 - Outdoor



Dimensions: 6'4" x 10'9"  
Area: 69 sq. ft  
Counted as living area: No

Heated: No  
Finished: Yes  
Enclosed: No  
Contiguous: Yes  
Permitted: Yes  
Wet space: No  
Addition: No  
Conversion: No

## 10 Floor 1 - Hall



Dimensions: 8'11" x 6'11"  
Area: 41 sq. ft  
Counted as living area: Yes

Heated: Yes  
Finished: Yes  
Enclosed: Yes  
Contiguous: Yes  
Permitted: Yes  
Wet space: No  
Addition: No  
Conversion: No