

101 Woodson Drive, Clayton, Johnston County, North Carolina, United States, 27527

Gross Living Area: 1411 sq. ft



Space	Area (sq. ft)	Calculation <small>Coordinate Polygon Area Algorithm using inches</small>
FLOOR 1 (Living area)	614	$-((295 + 295) * (294.8 - 706) + (295 + 79.8) * (706 - 706) + (79.8 + 79.8) * (706 - 294.8) + (79.8 + 295) * (294.8 - 294.8)) * 0.5 * 0.00694$
UTILITY ROOM (Non-living area)	55	$-((138.6 + 138.6) * (172.7 - 178.7) + (138.6 + 144.6) * (178.7 - 178.7) + (144.6 + 144.6) * (178.7 - 294.8) + (144.6 + 79.8) * (294.8 - 294.8) + (79.8 + 79.8) * (294.8 - 172.7) + (79.8 + 138.6) * (172.7 - 172.7)) * 0.5 * 0.00694$
SCREENED PORCH	128	$-((295 + 295) * (172.7 - 294.8) + (295 + 144.6) * (294.8 - 294.8) + (144.6 + 144.6) * (294.8 -$

101 Woodson Drive, Clayton, Johnston County, North Carolina, United States, 27527

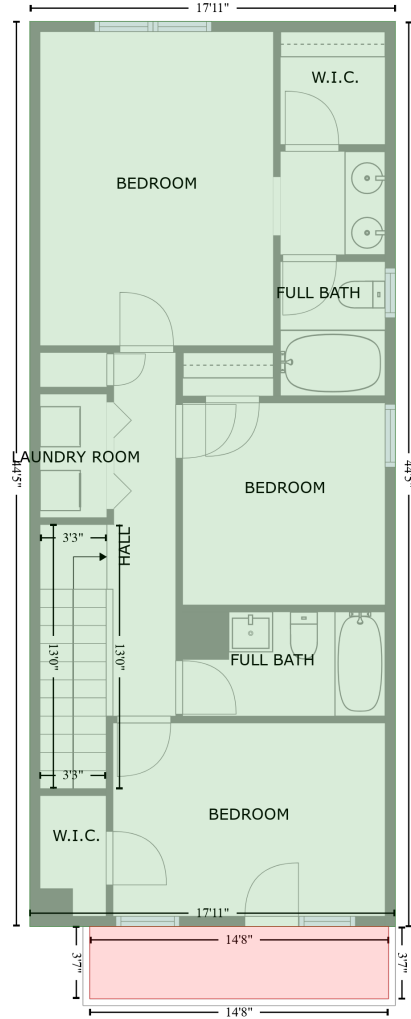
Gross Living Area: 1411 sq. ft

Space	Area (sq. ft)	Calculation <small>Coordinate Polygon Area Algorithm using inches</small>
(Non-living area)		$178.7 + (144.6 + 138.6) * (178.7 - 178.7) + (138.6 + 138.6) * (178.7 - 172.7) + (138.6 + 295) * (172.7 - 172.7) * 0.5 * 0.00694$
PORCH (Non-living area)	60	$-((295 + 295) * (706 - 752.6) + (295 + 111.1) * (752.6 - 752.6) + (111.1 + 111.1) * (752.6 - 706) + (111.1 + 295) * (706 - 706)) * 0.5 * 0.00694$
PATIO (Non-living area)	100	$-((280.6 + 280.6) * (67.2 - 172.7) + (280.6 + 144.6) * (172.7 - 172.7) + (144.6 + 144.4) * (172.7 - 67.2) + (144.4 + 280.6) * (67.2 - 67.2)) * 0.5 * 0.00694$

101 Woodson Drive, Clayton, Johnston County, North Carolina, United States, 27527

Gross Living Area: 1411 sq. ft

FLOOR 2
[AREA: 797]



BALCONY (1)
[AREA: 52]

Space	Area (sq. ft)	Calculation <small>Coordinate Polygon Area Algorithm using inches</small>
FLOOR 2 (Living area)	797	$-((295 + 295) * (172.7 - 706) + (295 + 79.8) * (706 - 706) + (79.8 + 79.8) * (706 - 172.7) + (79.8 + 295) * (172.7 - 172.7)) * 0.5 * 0.00694$
BALCONY (Non-living area)	52	$-((291 + 291) * (706 - 748.6) + (291 + 115.1) * (748.6 - 748.6) + (115.1 + 115.1) * (748.6 - 706) + (115.1 + 291) * (706 - 706)) * 0.5 * 0.00694$