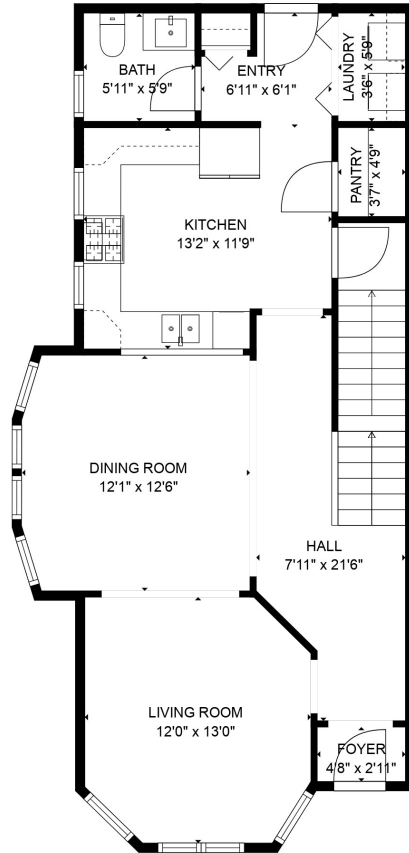
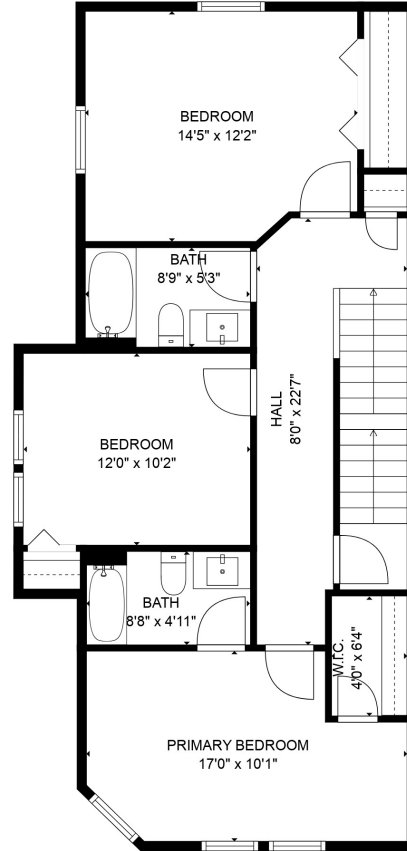


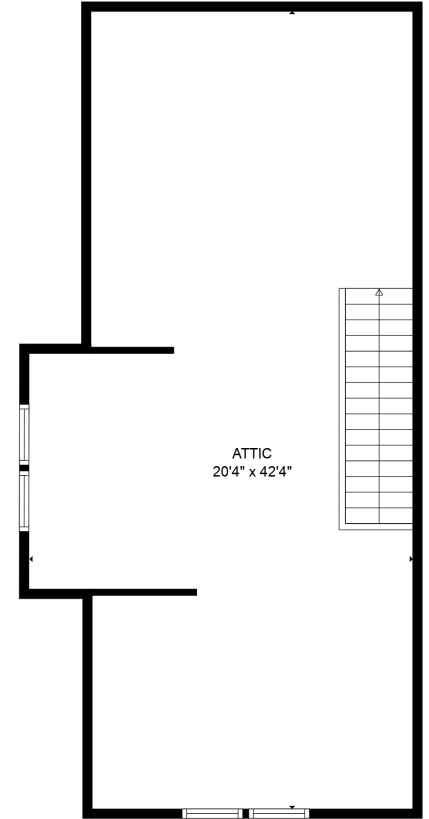
FLOOR 1



FLOOR 2



FLOOR 3



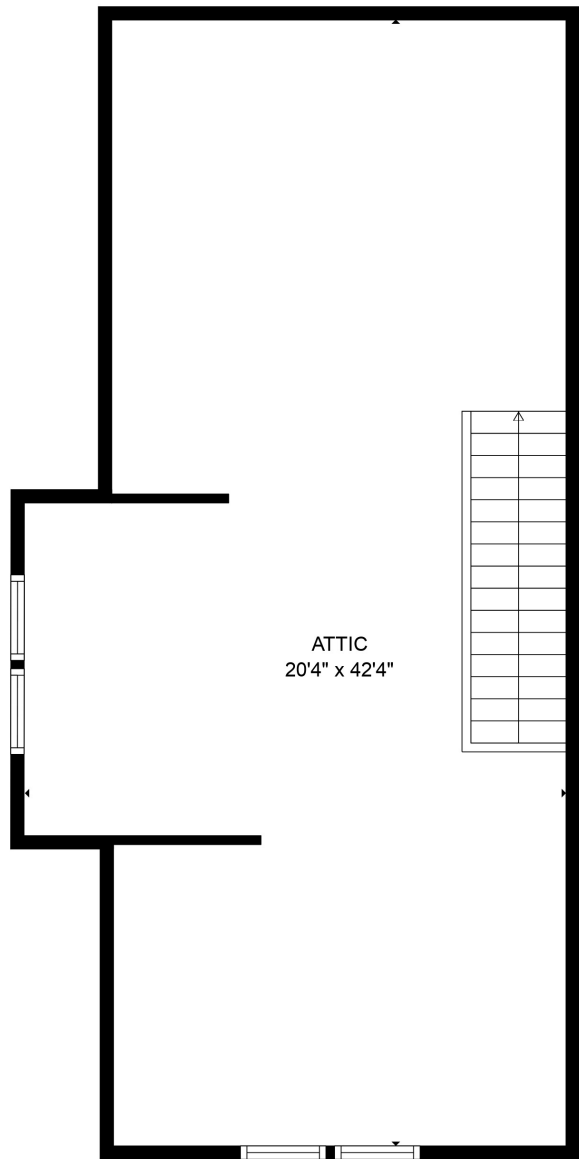
FLOOR 4

TOTAL: 1550 sq. ft

Below Ground: 0 sq. ft, FLOOR 2: 763 sq. ft, FLOOR 3: 787 sq. ft, FLOOR 4: 0 sq. ft
 EXCLUDED AREAS: BASEMENT: 724 sq. ft, LOW CEILING: 308 sq. ft, ATTIC: 454 sq. ft

Sizes and Dimensions are approximate



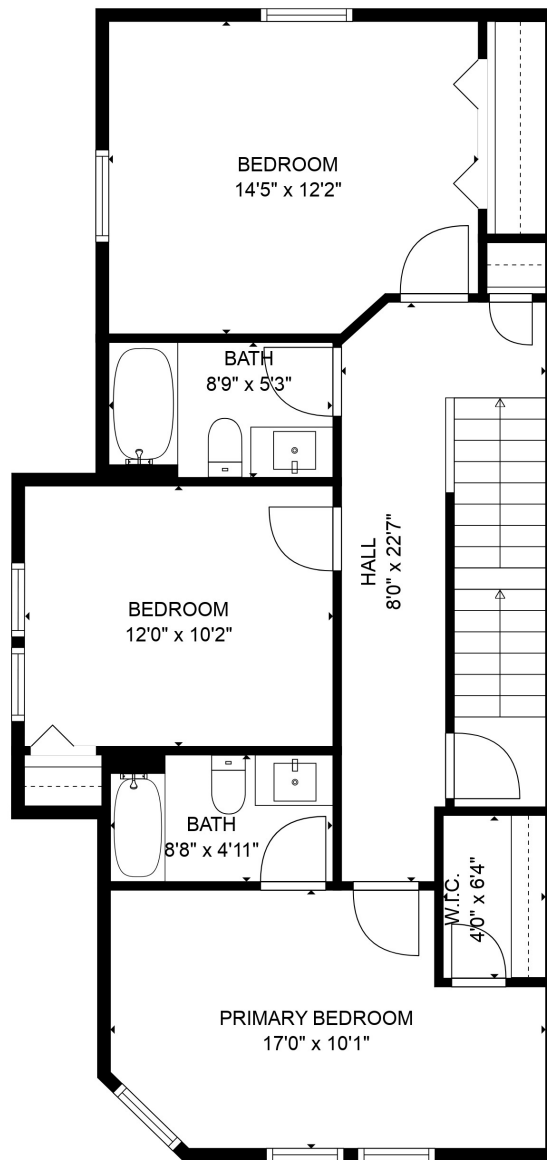


TOTAL: 1550 sq. ft

Below Ground: 0 sq. ft, FLOOR 2: 763 sq. ft, FLOOR 3: 787 sq. ft, FLOOR 4: 0 sq. ft
EXCLUDED AREAS: BASEMENT: 724 sq. ft, LOW CEILING: 308 sq. ft, ATTIC: 454 sq. ft

Sizes and Dimensions are approximate



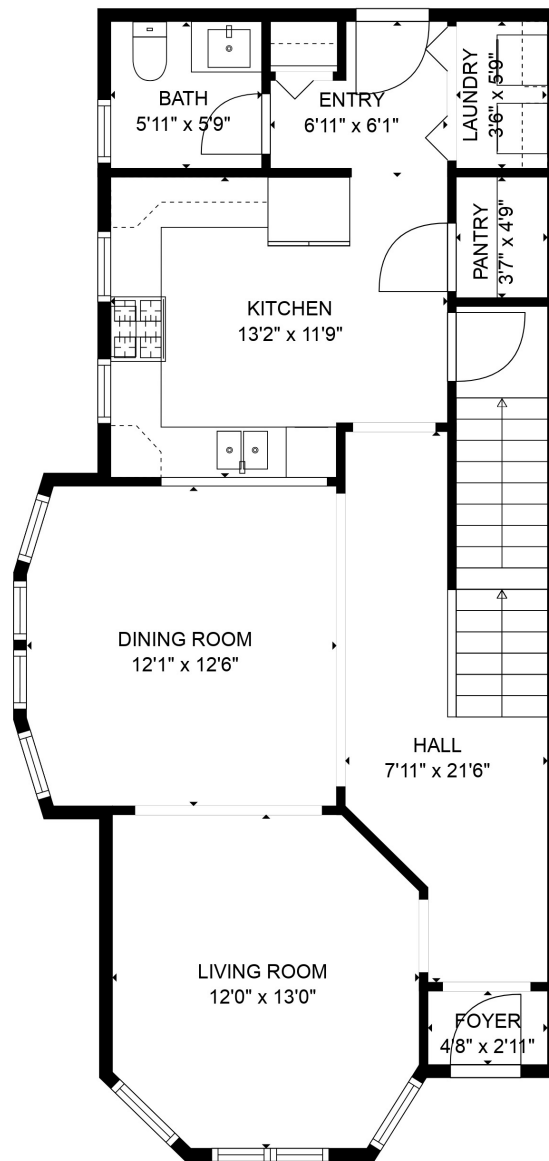


TOTAL: 1550 sq. ft

Below Ground: 0 sq. ft, FLOOR 2: 763 sq. ft, FLOOR 3: 787 sq. ft, FLOOR 4: 0 sq. ft
 EXCLUDED AREAS: BASEMENT: 724 sq. ft, LOW CEILING: 308 sq. ft, ATTIC: 454 sq. ft

Sizes and Dimensions are approximate



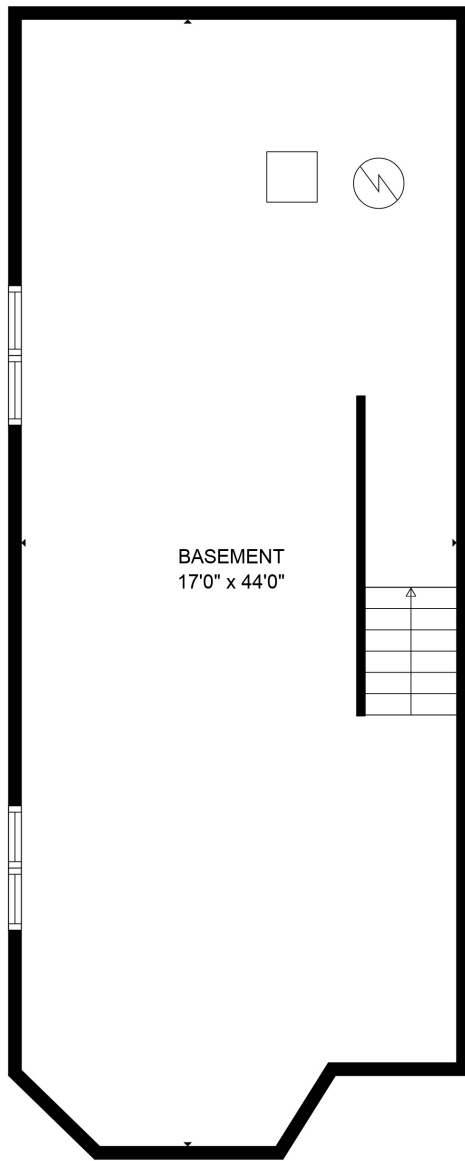


TOTAL: 1550 sq. ft

Below Ground: 0 sq. ft, FLOOR 2: 763 sq. ft, FLOOR 3: 787 sq. ft, FLOOR 4: 0 sq. ft
EXCLUDED AREAS: BASEMENT: 724 sq. ft, LOW CEILING: 308 sq. ft, ATTIC: 454 sq. ft

Sizes and Dimensions are approximate





BASEMENT
17'0" x 44'0"

TOTAL: 1550 sq. ft

Below Ground: 0 sq. ft, FLOOR 2: 763 sq. ft, FLOOR 3: 787 sq. ft, FLOOR 4: 0 sq. ft
EXCLUDED AREAS: BASEMENT: 724 sq. ft, LOW CEILING: 308 sq. ft, ATTIC: 454 sq. ft

Sizes and Dimensions are approximate

