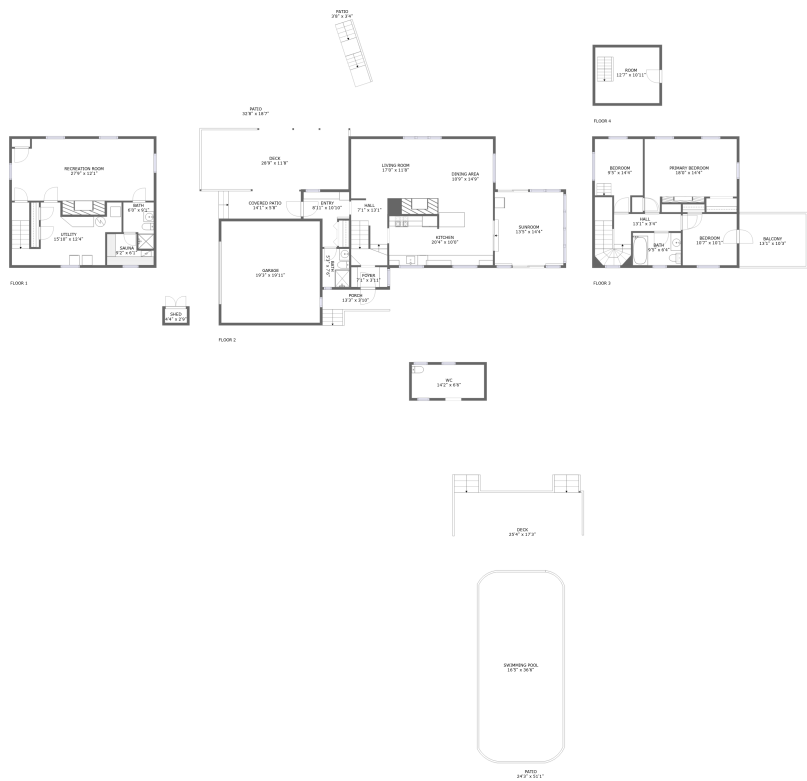


Home report

204 Glenburn Drive, Surgeon Hall, West Mifflin, Allegheny County, Pennsylvania, United States, 15236



Total Area: 1771 sq. ft

Below Ground: 489 sq. ft, Floor 2: 1039 sq. ft, Floor 3: 687 sq. ft, Floor 4: 45 sq. ft
Excluded: Utility 198 sq. ft, WC 93 sq. ft, Shed 12 sq. ft, Garage 384 sq. ft, Patio 1386 sq. ft, Covered patio 83 sq. ft, Porch 51 sq. ft, Deck 837 sq. ft, Balcony 134 sq. ft, Low ceiling 92 sq. ft, Walls: 273 sq. ft

Property summary

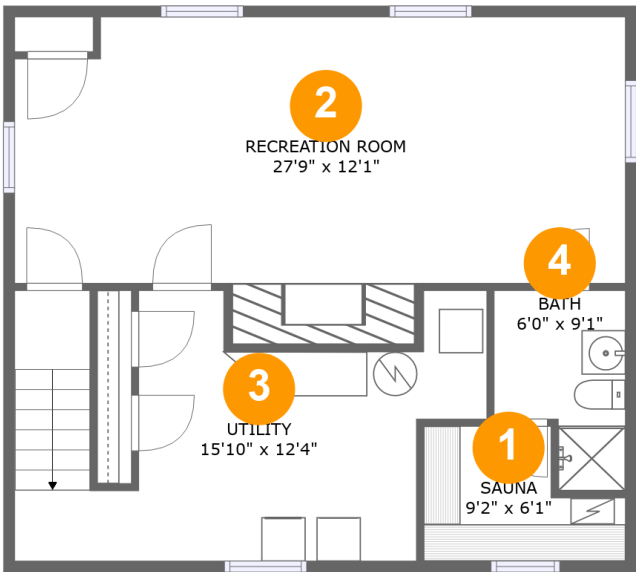
**4**
Floors

**3**
Bedrooms

**3**
Bathrooms

**1**
Garages

204 Glenburn Drive, Surgeon Hall, West Mifflin, Allegheny County, Pennsylvania, United States, 15236



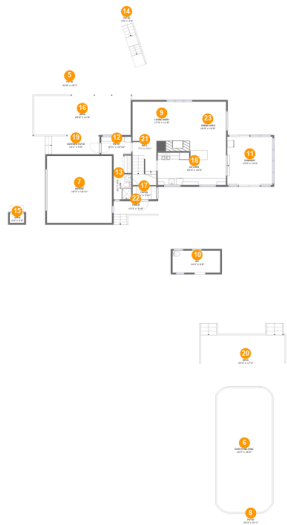
Room dimensions

Floor 1 Below ground Total:489sqft Excluded: 198sqft

#		Max Dimensions	sqft	Included
1	Sauna	9'2" x 6'1"	45 sq. ft	Yes
2	Recreation Room	27'9" x 12'1"	352 sq. ft	Yes
3	Utility	15'10" x 12'4"	198 sq. ft	No
4	Bath	6'0" x 9'1"	45 sq. ft	Yes

Home report

204 Glenburn Drive, Surgeon Hall, West Mifflin, Allegheny County, Pennsylvania, United States, 15236



Room dimensions

Floor 2 Total:1039sqft Excluded: 2846sqft

#		Max Dimensions	sqft	Included
5	Patio	32'8" x 18'7"	258 sq. ft	No
6	Swimming Pool	16'5" x 36'6"	597 sq. ft	No
7	Garage	19'3" x 19'11"	384 sq. ft	No
8	Patio	24'3" x 51'1"	1116 sq. ft	No
9	Living Room	17'0" x 11'8"	220 sq. ft	Yes
10	WC	14'2" x 6'6"	93 sq. ft	No
11	Sunroom	13'5" x 14'4"	193 sq. ft	Yes
12	Entry	8'11" x 10'10"	63 sq. ft	Yes
13	Bath	5'3" x 7'6"	40 sq. ft	Yes
14	Patio	3'8" x 3'4"	12 sq. ft	No
15	Shed	4'4" x 2'9"	12 sq. ft	No

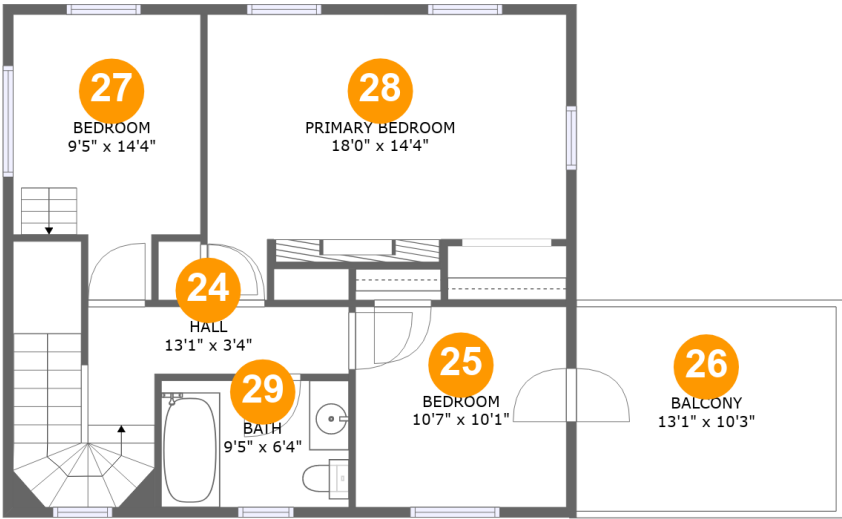
Home report

204 Glenburn Drive, Surgeon Hall, West Mifflin, Allegheny County, Pennsylvania, United States, 15236

#		Max Dimensions	sqft	Included
16	Deck	28'9" x 11'8"	350 sq. ft	No
17	Foyer	7'1" x 3'11"	28 sq. ft	Yes
18	Kitchen	20'4" x 10'0"	199 sq. ft	Yes
19	Covered Patio	14'1" x 5'8"	83 sq. ft	No
20	Deck	25'4" x 17'3"	487 sq. ft	No
21	Hall	7'1" x 13'1"	101 sq. ft	Yes
22	Porch	13'3" x 3'10"	51 sq. ft	No
23	Dining Area	10'9" x 14'9"	159 sq. ft	Yes

Home report

204 Glenburn Drive, Surgeon Hall, West Mifflin, Allegheny County, Pennsylvania, United States, 15236



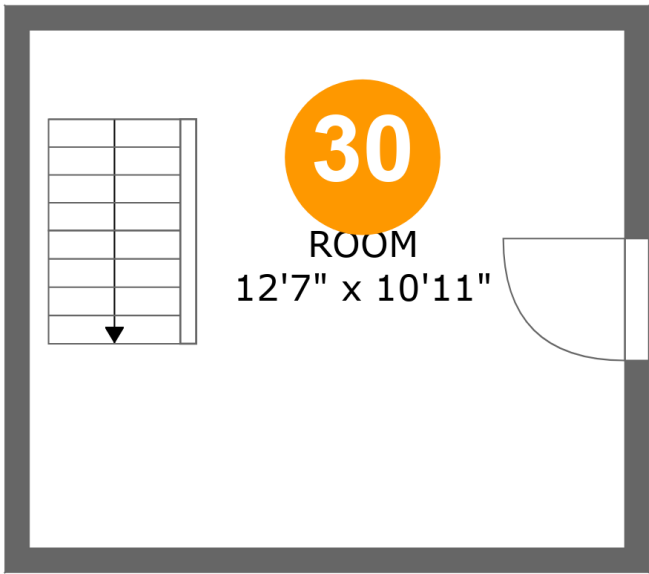
Room dimensions

Floor 3 Total:687sqft Excluded: 134sqft

#		Max Dimensions	sqft	Included
24	Hall	13'1" x 3'4"	115 sq. ft	Yes
25	Bedroom	10'7" x 10'1"	107 sq. ft	Yes
26	Balcony	13'1" x 10'3"	134 sq. ft	No
27	Bedroom	9'5" x 14'4"	115 sq. ft	Yes
28	Primary Bedroom	18'0" x 14'4"	222 sq. ft	Yes
29	Bath	9'5" x 6'4"	60 sq. ft	Yes

Home report

204 Glenburn Drive, Surgeon Hall, West Mifflin, Allegheny County, Pennsylvania, United States, 15236

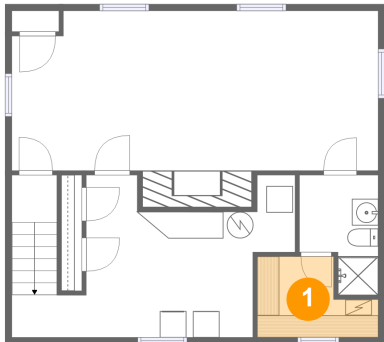


Room dimensions

Floor 4 Total:45sqft Excluded: 92sqft

#		Max Dimensions	sqft	Included
30	Room	12'7" x 10'11"	45 sq. ft	Yes

1 Floor 1 - Sauna



Max Dimensions: 9'2" x 6'1"
Calculated Area: 45 sq. ft
Included: Yes

Heated: Yes
Finished: Yes
Enclosed: Yes
Contiguous: Yes
Permitted: Yes
Wet space: No
Addition: No
Conversion: No

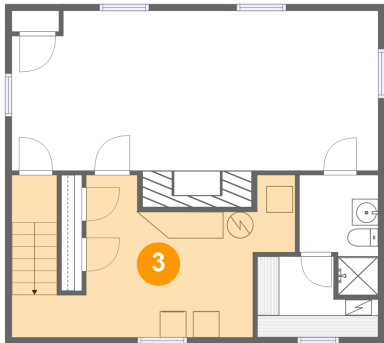
2 Floor 1 - Recreation Room



Max Dimensions: 27'9" x 12'1"
Calculated Area: 352 sq. ft
Included: Yes

Heated: Yes
Finished: Yes
Enclosed: Yes
Contiguous: Yes
Permitted: Yes
Wet space: No
Addition: No
Conversion: No

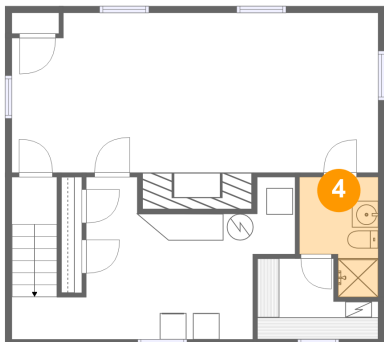
3 Floor 1 - Utility



Max Dimensions: 15'10" x 12'4"
Calculated Area: 198 sq. ft
Included: No

Heated: Yes
Finished: No
Enclosed: Yes
Contiguous: Yes
Permitted: Yes
Wet space: No
Addition: No
Conversion: No

4 Floor 1 - Bath



Max Dimensions: 6'0" x 9'1"
Calculated Area: 45 sq. ft
Included: Yes

Heated: Yes
Finished: Yes
Enclosed: Yes
Contiguous: Yes
Permitted: Yes
Wet space: Yes
Addition: No
Conversion: No

5 Floor 2 - Patio



Max Dimensions: 32'8" x 18'7"
Calculated Area: 258 sq. ft
Included: No

Heated: No
Finished: Yes
Enclosed: No
Contiguous: Yes
Permitted: Yes
Wet space: No
Addition: No
Conversion: No

204 Glenburn Drive, Surgeon Hall, West Mifflin, Allegheny County, Pennsylvania, United States, 15236

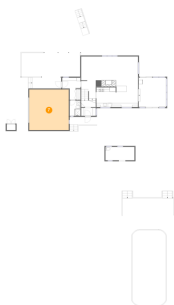
6 Floor 2 - Swimming Pool



Max Dimensions: 16'5" x 36'6"
Calculated Area: 597 sq. ft
Included: No

Heated: No
Finished: No
Enclosed: No
Contiguous: Yes
Permitted: No
Wet space: No
Addition: No
Conversion: No

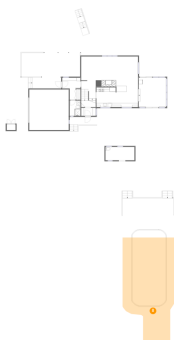
7 Floor 2 - Garage



Max Dimensions: 19'3" x 19'11"
Calculated Area: 384 sq. ft
Included: No

Heated: No
Finished: No
Enclosed: Yes
Contiguous: Yes
Permitted: Yes
Wet space: No
Addition: No
Conversion: No

8 Floor 2 - Patio

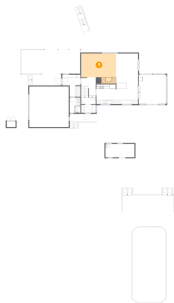


Max Dimensions: 24'3" x 51'1"
Calculated Area: 1116 sq. ft
Included: No

Heated: No
Finished: Yes
Enclosed: No
Contiguous: Yes
Permitted: Yes
Wet space: No
Addition: No
Conversion: No

204 Glenburn Drive, Surgeon Hall, West Mifflin, Allegheny County, Pennsylvania, United States, 15236

9 Floor 2 - Living Room



Max Dimensions: 17'0" x 11'8"
Calculated Area: 220 sq. ft
Included: Yes

Heated: Yes
Finished: Yes
Enclosed: Yes
Contiguous: Yes
Permitted: Yes
Wet space: No
Addition: No
Conversion: No

10 Floor 2 - WC



Max Dimensions: 14'2" x 6'6"
Calculated Area: 93 sq. ft
Included: No

Heated: No
Finished: Yes
Enclosed: No
Contiguous: Yes
Permitted: Yes
Wet space: No
Addition: No
Conversion: No

11 Floor 2 - Sunroom

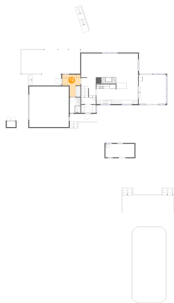


Max Dimensions: 13'5" x 14'4"
Calculated Area: 193 sq. ft
Included: Yes

Heated: Yes
Finished: Yes
Enclosed: Yes
Contiguous: Yes
Permitted: Yes
Wet space: No
Addition: No
Conversion: No

204 Glenburn Drive, Surgeon Hall, West Mifflin, Allegheny County, Pennsylvania, United States, 15236

12 Floor 2 - Entry



Max Dimensions: 8'11" x 10'10"
Calculated Area: 63 sq. ft
Included: Yes

Heated: Yes
Finished: Yes
Enclosed: Yes
Contiguous: Yes
Permitted: Yes
Wet space: No
Addition: No
Conversion: No

13 Floor 2 - Bath



Max Dimensions: 5'3" x 7'6"
Calculated Area: 40 sq. ft
Included: Yes

Heated: Yes
Finished: Yes
Enclosed: Yes
Contiguous: Yes
Permitted: Yes
Wet space: Yes
Addition: No
Conversion: No

14 Floor 2 - Patio



Max Dimensions: 3'8" x 3'4"
Calculated Area: 12 sq. ft
Included: No

Heated: No
Finished: Yes
Enclosed: No
Contiguous: Yes
Permitted: Yes
Wet space: No
Addition: No
Conversion: No

204 Glenburn Drive, Surgeon Hall, West Mifflin, Allegheny County, Pennsylvania, United States, 15236

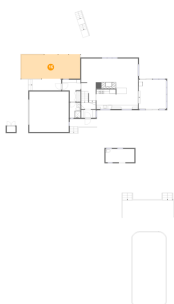
15 Floor 2 - Shed



Max Dimensions: 4'4" x 2'9"
Calculated Area: 12 sq. ft
Included: No

Heated: No
Finished: No
Enclosed: No
Contiguous: Yes
Permitted: Yes
Wet space: No
Addition: No
Conversion: No

16 Floor 2 - Deck



Max Dimensions: 28'9" x 11'8"
Calculated Area: 350 sq. ft
Included: No

Heated: No
Finished: Yes
Enclosed: No
Contiguous: Yes
Permitted: Yes
Wet space: No
Addition: No
Conversion: No

17 Floor 2 - Foyer

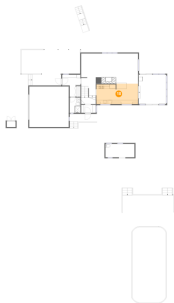


Max Dimensions: 7'1" x 3'11"
Calculated Area: 28 sq. ft
Included: Yes

Heated: Yes
Finished: Yes
Enclosed: Yes
Contiguous: Yes
Permitted: Yes
Wet space: No
Addition: No
Conversion: No

204 Glenburn Drive, Surgeon Hall, West Mifflin, Allegheny County, Pennsylvania, United States, 15236

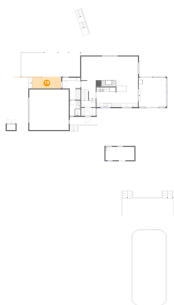
18 Floor 2 - Kitchen



Max Dimensions: 20'4" x 10'0"
Calculated Area: 199 sq. ft
Included: Yes

Heated: Yes
Finished: Yes
Enclosed: Yes
Contiguous: Yes
Permitted: Yes
Wet space: No
Addition: No
Conversion: No

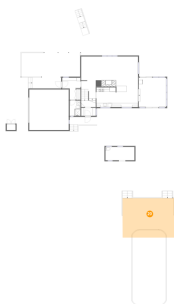
19 Floor 2 - Covered Patio



Max Dimensions: 14'1" x 5'8"
Calculated Area: 83 sq. ft
Included: No

Heated: No
Finished: Yes
Enclosed: No
Contiguous: Yes
Permitted: Yes
Wet space: No
Addition: No
Conversion: No

20 Floor 2 - Deck



Max Dimensions: 25'4" x 17'3"
Calculated Area: 487 sq. ft
Included: No

Heated: No
Finished: Yes
Enclosed: No
Contiguous: Yes
Permitted: Yes
Wet space: No
Addition: No
Conversion: No

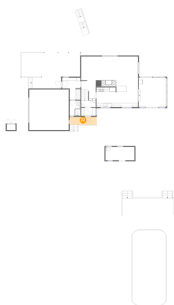
21 Floor 2 - Hall



Max Dimensions: 7'1" x 13'1"
Calculated Area: 101 sq. ft
Included: Yes

Heated: Yes
Finished: Yes
Enclosed: Yes
Contiguous: Yes
Permitted: Yes
Wet space: No
Addition: No
Conversion: No

22 Floor 2 - Porch



Max Dimensions: 13'3" x 3'10"
Calculated Area: 51 sq. ft
Included: No

Heated: No
Finished: Yes
Enclosed: No
Contiguous: Yes
Permitted: Yes
Wet space: No
Addition: No
Conversion: No

23 Floor 2 - Dining Area

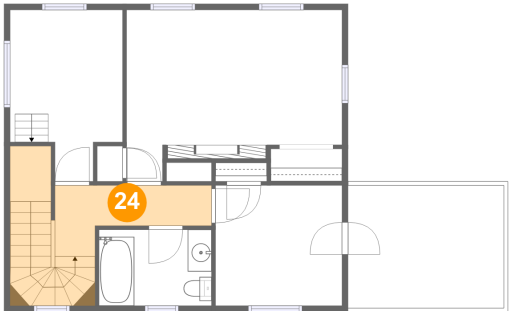


Max Dimensions: 10'9" x 14'9"
Calculated Area: 159 sq. ft
Included: Yes

Heated: Yes
Finished: Yes
Enclosed: Yes
Contiguous: Yes
Permitted: Yes
Wet space: No
Addition: No
Conversion: No

204 Glenburn Drive, Surgeon Hall, West Mifflin, Allegheny County, Pennsylvania, United States, 15236

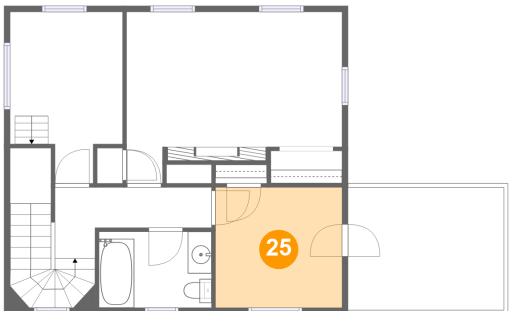
24 Floor 3 - Hall



Max Dimensions: 13'1" x 3'4"
Calculated Area: 115 sq. ft
Included: Yes

Heated: Yes
Finished: Yes
Enclosed: Yes
Contiguous: Yes
Permitted: Yes
Wet space: No
Addition: No
Conversion: No

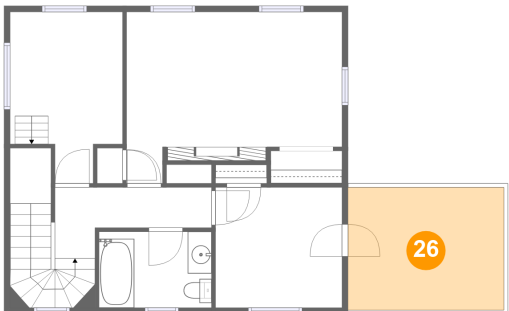
25 Floor 3 - Bedroom



Max Dimensions: 10'7" x 10'1"
Calculated Area: 107 sq. ft
Included: Yes

Heated: Yes
Finished: Yes
Enclosed: Yes
Contiguous: Yes
Permitted: Yes
Wet space: No
Addition: No
Conversion: No

26 Floor 3 - Balcony

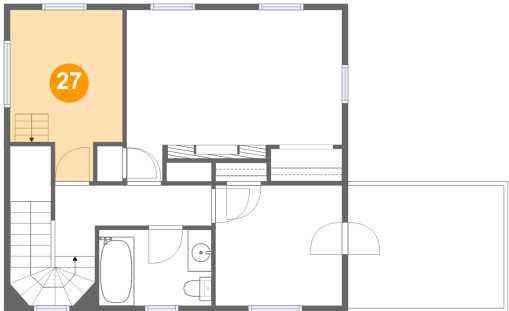


Max Dimensions: 13'1" x 10'3"
Calculated Area: 134 sq. ft
Included: No

Heated: No
Finished: Yes
Enclosed: No
Contiguous: Yes
Permitted: Yes
Wet space: No
Addition: No
Conversion: No

204 Glenburn Drive, Surgeon Hall, West Mifflin, Allegheny County, Pennsylvania, United States, 15236

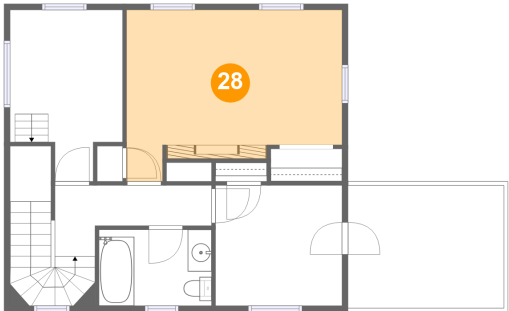
27 Floor 3 - Bedroom



Max Dimensions: 9'5" x 14'4"
Calculated Area: 115 sq. ft
Included: Yes

Heated: Yes
Finished: Yes
Enclosed: Yes
Contiguous: Yes
Permitted: Yes
Wet space: No
Addition: No
Conversion: No

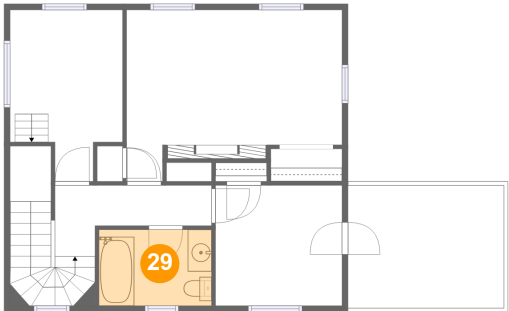
28 Floor 3 - Primary Bedroom



Max Dimensions: 18'0" x 14'4"
Calculated Area: 222 sq. ft
Included: Yes

Heated: Yes
Finished: Yes
Enclosed: Yes
Contiguous: Yes
Permitted: Yes
Wet space: No
Addition: No
Conversion: No

29 Floor 3 - Bath

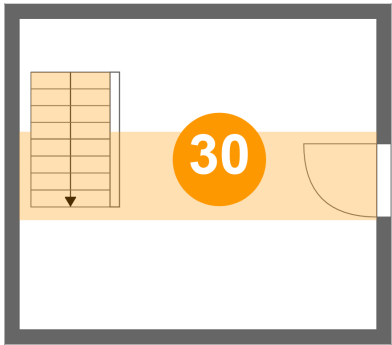


Max Dimensions: 9'5" x 6'4"
Calculated Area: 60 sq. ft
Included: Yes

Heated: Yes
Finished: Yes
Enclosed: Yes
Contiguous: Yes
Permitted: Yes
Wet space: Yes
Addition: No
Conversion: No

204 Glenburn Drive, Surgeon Hall, West Mifflin, Allegheny
County, Pennsylvania, United States, 15236

30 Floor 4 - Room



Max Dimensions: 12'7" x 10'11"
Calculated Area: 45 sq. ft
Included: Yes

Heated: Yes
Finished: Yes
Enclosed: Yes
Contiguous: Yes
Permitted: Yes
Wet space: No
Addition: No
Conversion: No