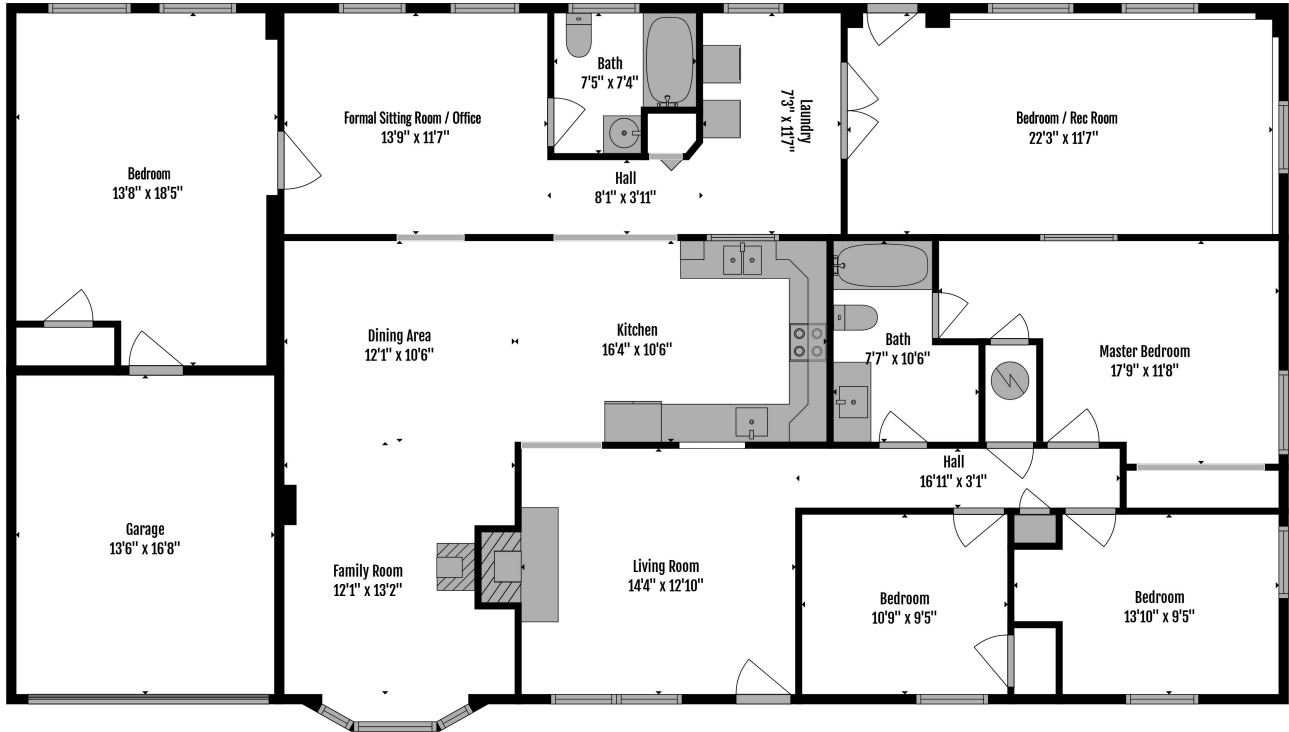


## Home report

10325 Gordon Road, Spotsylvania, Spotsylvania  
County, Virginia, United States, 22553

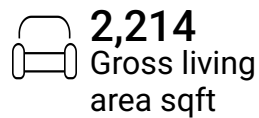
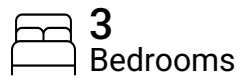


**TOTAL: 2397 sq. ft**

EXCLUDED AREAS: GARAGE: 225 sq. ft, BAY WINDOW: 10 sq. ft

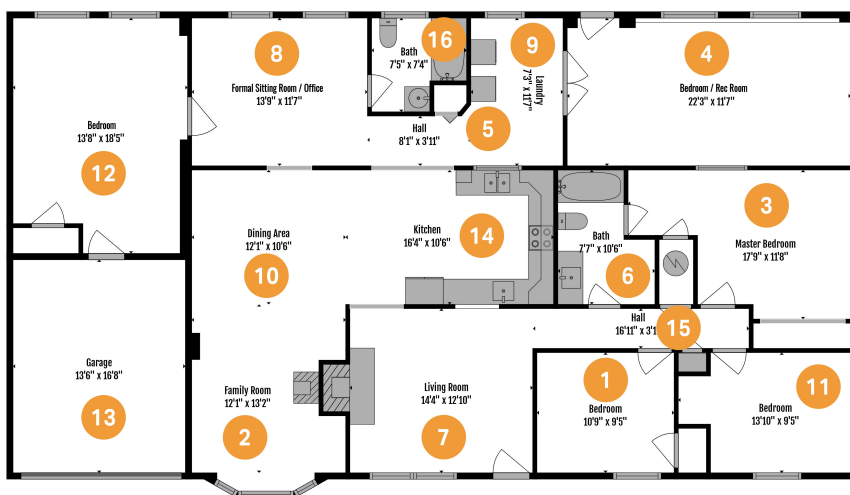
Measurements Are Highly Reliable But Not Guaranteed. Not To Be Used For Construction.

## Property summary



## Home report

10325 Gordon Road, Spotsylvania, Spotsylvania  
County, Virginia, United States, 22553



## Room dimensions

Floor 1

Total sqft: 2465 Living area: 2214

#		Dimensions	sqft	Counted as living area
1	Bedroom	10'9" x 9'5"	101 sq. ft	Yes
2	Family Room	12'1" x 13'2"	150 sq. ft	Yes
3	Primary Bedroom	17'9" x 11'8"	167 sq. ft	Yes
4	Sunroom	22'3" x 11'7"	261 sq. ft	Yes
5	Hall	8'1" x 3'11"	32 sq. ft	Yes
6	Bath	7'7" x 10'6"	67 sq. ft	Yes
7	Living Room	14'4" x 12'10"	192 sq. ft	Yes
8	Room	13'9" x 11'7"	159 sq. ft	Yes
9	Laundry	7'3" x 11'7"	84 sq. ft	Yes
10	Dining Area	12'1" x 10'6"	127 sq. ft	Yes
11	Bedroom	13'10" x 9'5"	116 sq. ft	Yes

Home report

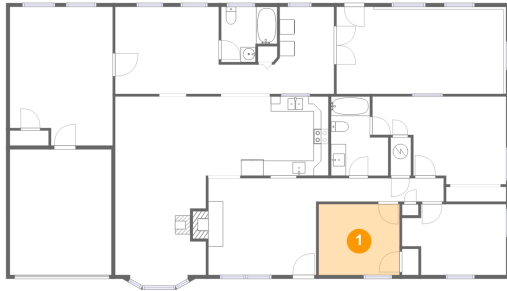
**10325 Gordon Road, Spotsylvania, Spotsylvania  
County, Virginia, United States, 22553**

#		Dimensions	sqft	Counted as living area
12	Room	13'8" x 18'5"	239 sq. ft	Yes
13	Garage	13'6" x 16'8"	225 sq. ft	No
14	Kitchen	16'4" x 10'6"	173 sq. ft	Yes
15	Hall	16'11" x 3'1"	53 sq. ft	Yes
16	Bath	7'5" x 7'4"	48 sq. ft	Yes

Home report

10325 Gordon Road, Spotsylvania, Spotsylvania  
County, Virginia, United States, 22553

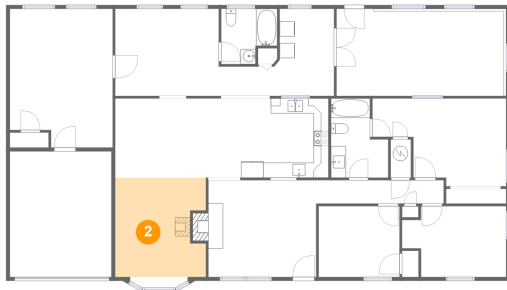
## 1 Floor 1 - Bedroom



Dimensions: 10'9" x 9'5"  
Area: 101 sq. ft  
Counted as living area: Yes

Heated: Yes  
Finished: Yes  
Enclosed: Yes  
Contiguous: Yes  
Permitted: Yes  
Wet space: No  
Addition: No  
Conversion: No

## 2 Floor 1 - Family Room



Dimensions: 12'1" x 13'2"  
Area: 150 sq. ft  
Counted as living area: Yes

Heated: Yes  
Finished: Yes  
Enclosed: Yes  
Contiguous: Yes  
Permitted: Yes  
Wet space: No  
Addition: No  
Conversion: No

10325 Gordon Road, Spotsylvania, Spotsylvania  
County, Virginia, United States, 22553

**3** Floor 1 - Primary Bedroom



Dimensions: 17'9" x 11'8"  
Area: 167 sq. ft  
Counted as living area: Yes

Heated: Yes  
Finished: Yes  
Enclosed: Yes  
Contiguous: Yes  
Permitted: Yes  
Wet space: No  
Addition: No  
Conversion: No

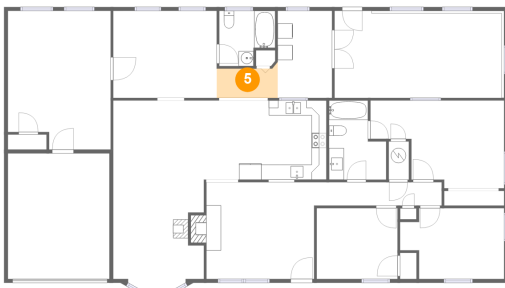
**4** Floor 1 - Sunroom



Dimensions: 22'3" x 11'7"  
Area: 261 sq. ft  
Counted as living area: Yes

Heated: Yes  
Finished: Yes  
Enclosed: Yes  
Contiguous: Yes  
Permitted: Yes  
Wet space: No  
Addition: No  
Conversion: No

**5** Floor 1 - Hall

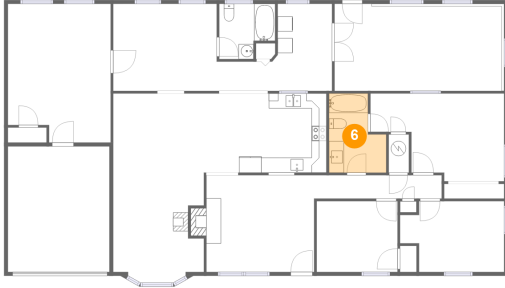


Dimensions: 8'1" x 3'11"  
Area: 32 sq. ft  
Counted as living area: Yes

Heated: Yes  
Finished: Yes  
Enclosed: Yes  
Contiguous: Yes  
Permitted: Yes  
Wet space: No  
Addition: No  
Conversion: No

10325 Gordon Road, Spotsylvania, Spotsylvania  
County, Virginia, United States, 22553

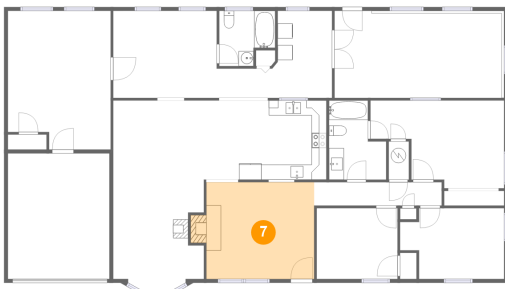
**6** Floor 1 - Bath



Dimensions: 7'7" x 10'6"  
Area: 67 sq. ft  
Counted as living area: Yes

Heated: Yes  
Finished: Yes  
Enclosed: Yes  
Contiguous: Yes  
Permitted: Yes  
Wet space: Yes  
Addition: No  
Conversion: No

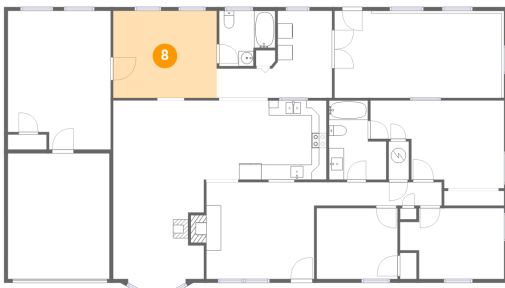
**7** Floor 1 - Living Room



Dimensions: 14'4" x 12'10"  
Area: 192 sq. ft  
Counted as living area: Yes

Heated: Yes  
Finished: Yes  
Enclosed: Yes  
Contiguous: Yes  
Permitted: Yes  
Wet space: No  
Addition: No  
Conversion: No

**8** Floor 1 - Room

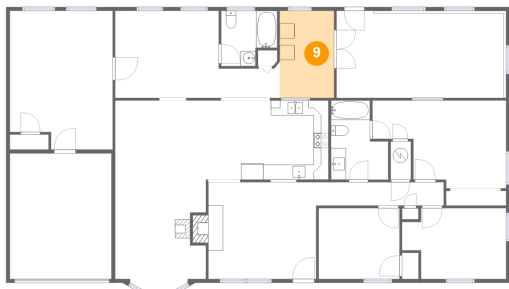


Dimensions: 13'9" x 11'7"  
Area: 159 sq. ft  
Counted as living area: Yes

Heated: Yes  
Finished: Yes  
Enclosed: Yes  
Contiguous: Yes  
Permitted: Yes  
Wet space: No  
Addition: No  
Conversion: No

10325 Gordon Road, Spotsylvania, Spotsylvania  
County, Virginia, United States, 22553

**9** Floor 1 - Laundry



Dimensions: 7'3" x 11'7"  
Area: 84 sq. ft  
Counted as living area: Yes

Heated: Yes  
Finished: Yes  
Enclosed: Yes  
Contiguous: Yes  
Permitted: Yes  
Wet space: No  
Addition: No  
Conversion: No

**10** Floor 1 - Dining Area



Dimensions: 12'1" x 10'6"  
Area: 127 sq. ft  
Counted as living area: Yes

Heated: Yes  
Finished: Yes  
Enclosed: Yes  
Contiguous: Yes  
Permitted: Yes  
Wet space: No  
Addition: No  
Conversion: No

**11** Floor 1 - Bedroom



Dimensions: 13'10" x 9'5"  
Area: 116 sq. ft  
Counted as living area: Yes

Heated: Yes  
Finished: Yes  
Enclosed: Yes  
Contiguous: Yes  
Permitted: Yes  
Wet space: No  
Addition: No  
Conversion: No

10325 Gordon Road, Spotsylvania, Spotsylvania  
County, Virginia, United States, 22553

**12** Floor 1 - Room



Dimensions: 13'8" x 18'5"  
Area: 239 sq. ft  
Counted as living area: Yes

Heated: Yes  
Finished: Yes  
Enclosed: Yes  
Contiguous: Yes  
Permitted: Yes  
Wet space: No  
Addition: No  
Conversion: No

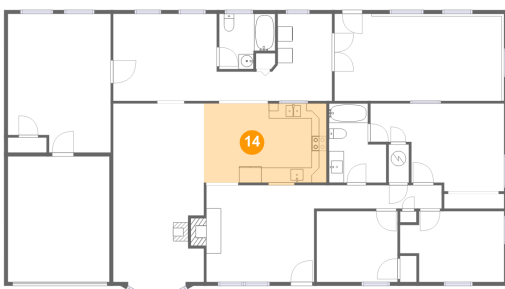
**13** Floor 1 - Garage



Dimensions: 13'6" x 16'8"  
Area: 225 sq. ft  
Counted as living area: No

Heated: No  
Finished: No  
Enclosed: Yes  
Contiguous: Yes  
Permitted: Yes  
Wet space: No  
Addition: No  
Conversion: No

**14** Floor 1 - Kitchen



Dimensions: 16'4" x 10'6"  
Area: 173 sq. ft  
Counted as living area: Yes

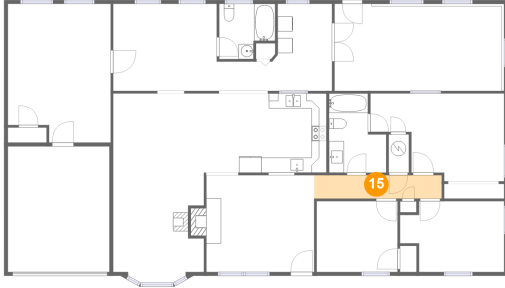
Heated: Yes  
Finished: Yes  
Enclosed: Yes  
Contiguous: Yes  
Permitted: Yes  
Wet space: No  
Addition: No  
Conversion: No



Home report

10325 Gordon Road, Spotsylvania, Spotsylvania  
County, Virginia, United States, 22553

### 15 Floor 1 - Hall



Dimensions: 16'11" x 3'1"  
Area: 53 sq. ft  
Counted as living area: Yes

Heated: Yes  
Finished: Yes  
Enclosed: Yes  
Contiguous: Yes  
Permitted: Yes  
Wet space: No  
Addition: No  
Conversion: No

### 16 Floor 1 - Bath



Dimensions: 7'5" x 7'4"  
Area: 48 sq. ft  
Counted as living area: Yes

Heated: Yes  
Finished: Yes  
Enclosed: Yes  
Contiguous: Yes  
Permitted: Yes  
Wet space: Yes  
Addition: No  
Conversion: No