

Home report

22 Ches Mae Lane, Milford, Hillsborough County, New Hampshire, United States, 03055



Total Area: 1858 sq. ft

Below Ground: 0 sq. ft, Floor 2: 859 sq. ft, Floor 3: 999 sq. ft

Excluded: Basement 836 sq. ft, Undefined 17 sq. ft, Garage 354 sq. ft, Screened porch 206 sq. ft, Fireplace 7 sq. ft, Open to below 53 sq. ft, Low ceiling 17 sq. ft, Walls: 247 sq. ft

Property summary

 **3** Floors

 **4** Bedrooms

 **2** Bathrooms

Home report

**22 Ches Mae Lane, Milford, Hillsborough County, New  
Hampshire, United States, 03055**



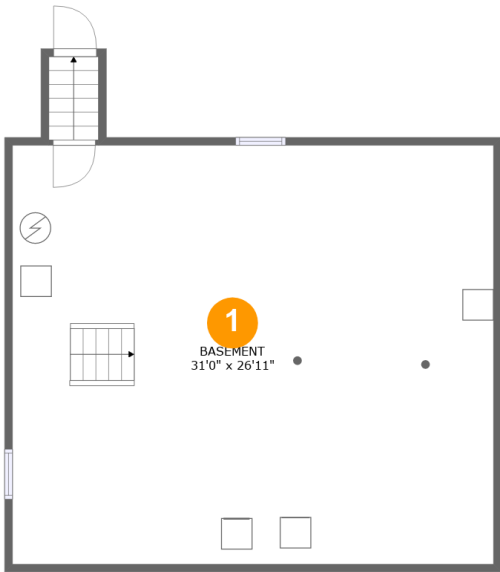
**1**  
Half baths



**1**  
Garages

Home report

22 Ches Mae Lane, Milford, Hillsborough County, New Hampshire, United States, 03055



Room dimensions

Floor 1 Below ground Total:0sqft Excluded: 853sqft

#		Max Dimensions	sqft	Included
1	Basement	31'0" x 26'11"	835 sq. ft	No

Home report

22 Ches Mae Lane, Milford, Hillsborough County, New Hampshire, United States, 03055



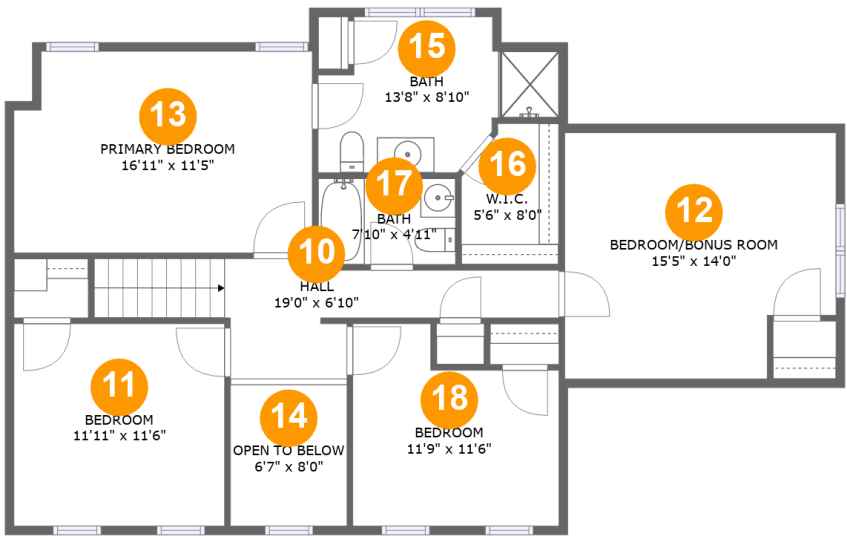
Room dimensions

Floor 2 Total:859sqft   Excluded: 567sqft

#		Max Dimensions	sqft	Included
2	Family Room	16'6" x 18'11"	268 sq. ft	Yes
3	Dining Area	11'9" x 11'5"	134 sq. ft	Yes
4	WC	3'0" x 8'8"	26 sq. ft	Yes
5	Screened Porch	14'10" x 15'3"	206 sq. ft	No
6	Foyer	6'7" x 8'0"	55 sq. ft	Yes
7	Garage	15'3" x 23'2"	354 sq. ft	No
8	Living Room	12'0" x 11'6"	138 sq. ft	Yes
9	Kitchen	14'6" x 17'6"	199 sq. ft	Yes

Home report

22 Ches Mae Lane, Milford, Hillsborough County, New Hampshire, United States, 03055



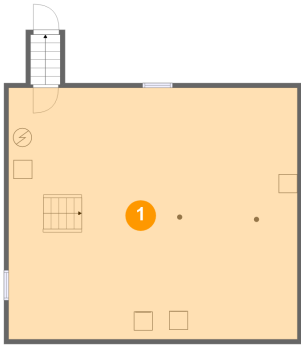
Room dimensions

Floor 3 Total:999sqft Excluded: 70sqft

#		Max Dimensions	sqft	Included
10	Hall	19'0" x 6'10"	104 sq. ft	Yes
11	Bedroom	11'11" x 11'6"	138 sq. ft	Yes
12	BEDROOM/BONUS Room	15'5" x 14'0"	186 sq. ft	Yes
13	Primary Bedroom	16'11" x 11'5"	187 sq. ft	Yes
14	Open To Below	6'7" x 8'0"	53 sq. ft	No
15	Bath	13'8" x 8'10"	93 sq. ft	Yes
16	W.I.C.	5'6" x 8'0"	41 sq. ft	Yes
17	Bath	7'10" x 4'11"	38 sq. ft	Yes
18	Bedroom	11'9" x 11'6"	115 sq. ft	Yes

22 Ches Mae Lane, Milford, Hillsborough County, New Hampshire, United States, 03055

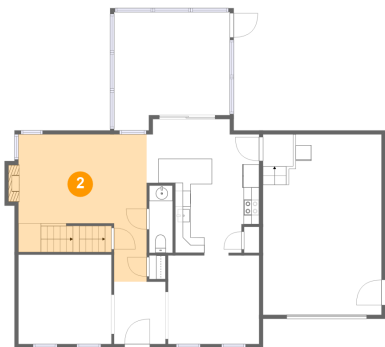
1 Floor 1 - Basement



Max Dimensions: 31'0" x 26'11"  
Calculated Area: 835 sq. ft  
Included: No

Heated: Yes  
Finished: No  
Enclosed: Yes  
Contiguous: Yes  
Permitted: Yes  
Wet space: No  
Addition: No  
Conversion: No

2 Floor 2 - Family Room

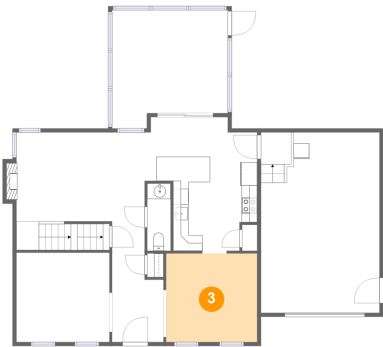


Max Dimensions: 16'6" x 18'11"  
Calculated Area: 268 sq. ft  
Included: Yes

Heated: Yes  
Finished: Yes  
Enclosed: Yes  
Contiguous: Yes  
Permitted: Yes  
Wet space: No  
Addition: No  
Conversion: No

22 Ches Mae Lane, Milford, Hillsborough County, New Hampshire, United States, 03055

3 Floor 2 - Dining Area



Max Dimensions: 11'9" x 11'5"  
Calculated Area: 134 sq. ft  
Included: Yes

Heated: Yes  
Finished: Yes  
Enclosed: Yes  
Contiguous: Yes  
Permitted: Yes  
Wet space: No  
Addition: No  
Conversion: No

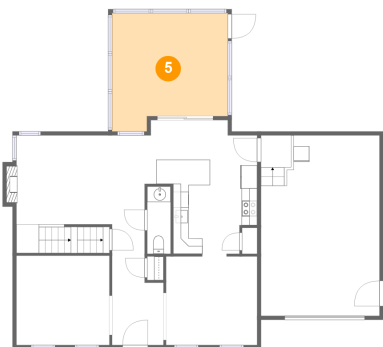
4 Floor 2 - WC



Max Dimensions: 3'0" x 8'8"  
Calculated Area: 26 sq. ft  
Included: Yes

Heated: Yes  
Finished: Yes  
Enclosed: Yes  
Contiguous: Yes  
Permitted: Yes  
Wet space: Yes  
Addition: No  
Conversion: No

5 Floor 2 - Screened Porch

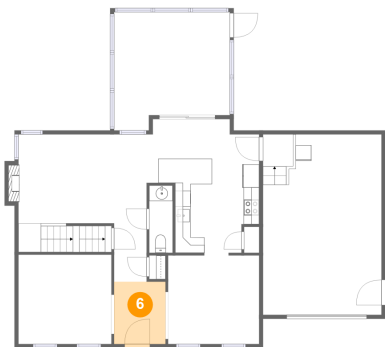


Max Dimensions: 14'10" x 15'3"  
Calculated Area: 206 sq. ft  
Included: No

Heated: No  
Finished: Yes  
Enclosed: No  
Contiguous: Yes  
Permitted: Yes  
Wet space: No  
Addition: No  
Conversion: No

22 Ches Mae Lane, Milford, Hillsborough County, New Hampshire, United States, 03055

6 Floor 2 - Foyer



Max Dimensions: 6'7" x 8'0"  
Calculated Area: 55 sq. ft  
Included: Yes

Heated: Yes  
Finished: Yes  
Enclosed: Yes  
Contiguous: Yes  
Permitted: Yes  
Wet space: No  
Addition: No  
Conversion: No

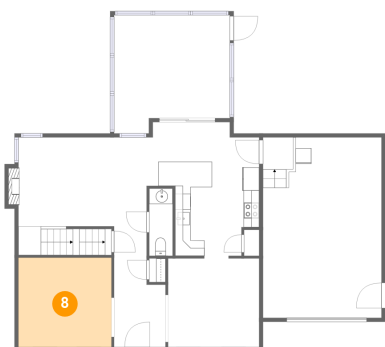
7 Floor 2 - Garage



Max Dimensions: 15'3" x 23'2"  
Calculated Area: 354 sq. ft  
Included: No

Heated: No  
Finished: No  
Enclosed: Yes  
Contiguous: Yes  
Permitted: Yes  
Wet space: No  
Addition: No  
Conversion: No

8 Floor 2 - Living Room



Max Dimensions: 12'0" x 11'6"  
Calculated Area: 138 sq. ft  
Included: Yes

Heated: Yes  
Finished: Yes  
Enclosed: Yes  
Contiguous: Yes  
Permitted: Yes  
Wet space: No  
Addition: No  
Conversion: No



22 Ches Mae Lane, Milford, Hillsborough County, New Hampshire, United States, 03055

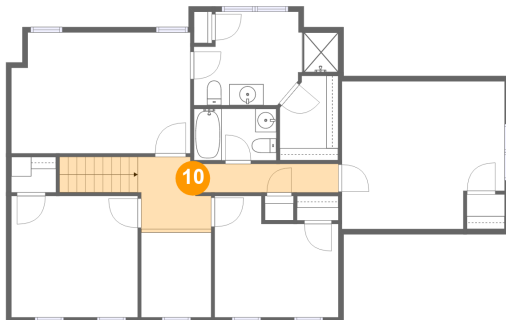
## 9 Floor 2 - Kitchen



Max Dimensions: 14'6" x 17'6"  
Calculated Area: 199 sq. ft  
Included: Yes

Heated: Yes  
Finished: Yes  
Enclosed: Yes  
Contiguous: Yes  
Permitted: Yes  
Wet space: No  
Addition: No  
Conversion: No

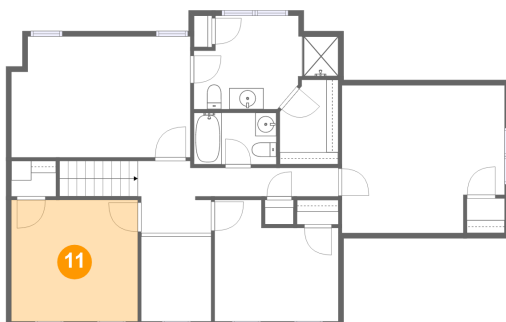
## 10 Floor 3 - Hall



Max Dimensions: 19'0" x 6'10"  
Calculated Area: 104 sq. ft  
Included: Yes

Heated: Yes  
Finished: Yes  
Enclosed: Yes  
Contiguous: Yes  
Permitted: Yes  
Wet space: No  
Addition: No  
Conversion: No

## 11 Floor 3 - Bedroom

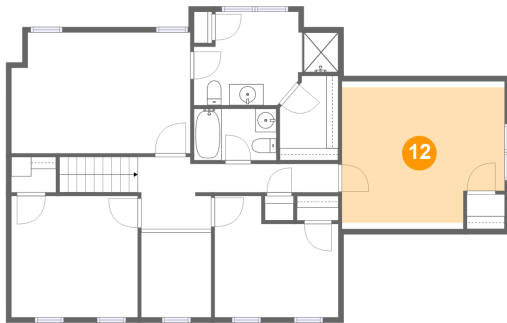


Max Dimensions: 11'11" x 11'6"  
Calculated Area: 138 sq. ft  
Included: Yes

Heated: Yes  
Finished: Yes  
Enclosed: Yes  
Contiguous: Yes  
Permitted: Yes  
Wet space: No  
Addition: No  
Conversion: No

22 Ches Mae Lane, Milford, Hillsborough County, New Hampshire, United States, 03055

### 12 Floor 3 - BEDROOM/BONUS Room



Max Dimensions: 15'5" x 14'0"  
Calculated Area: 186 sq. ft  
Included: Yes

Heated: Yes  
Finished: Yes  
Enclosed: Yes  
Contiguous: Yes  
Permitted: Yes  
Wet space: No  
Addition: No  
Conversion: No

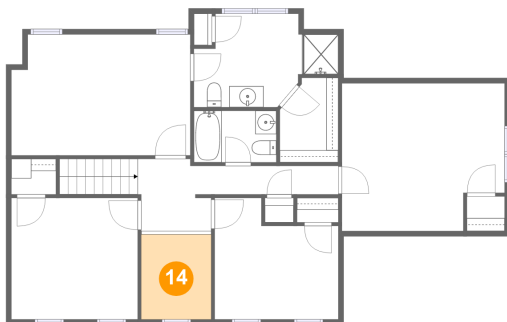
### 13 Floor 3 - Primary Bedroom



Max Dimensions: 16'11" x 11'5"  
Calculated Area: 187 sq. ft  
Included: Yes

Heated: Yes  
Finished: Yes  
Enclosed: Yes  
Contiguous: Yes  
Permitted: Yes  
Wet space: No  
Addition: No  
Conversion: No

### 14 Floor 3 - Open To Below

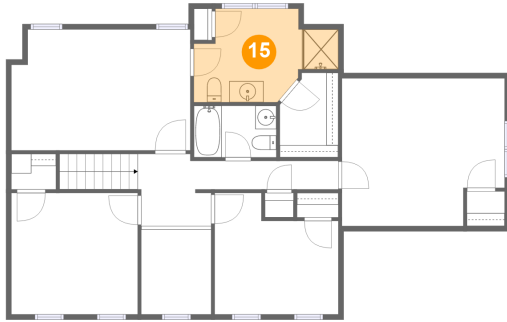


Max Dimensions: 6'7" x 8'0"  
Calculated Area: 53 sq. ft  
Included: No

Heated: No  
Finished: No  
Enclosed: No  
Contiguous: Yes  
Permitted: No  
Wet space: No  
Addition: No  
Conversion: No

22 Ches Mae Lane, Milford, Hillsborough County, New Hampshire, United States, 03055

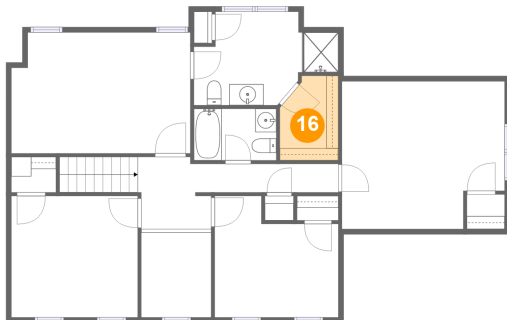
### 15 Floor 3 - Bath



Max Dimensions: 13'8" x 8'10"  
Calculated Area: 93 sq. ft  
Included: Yes

Heated: Yes  
Finished: Yes  
Enclosed: Yes  
Contiguous: Yes  
Permitted: Yes  
Wet space: Yes  
Addition: No  
Conversion: No

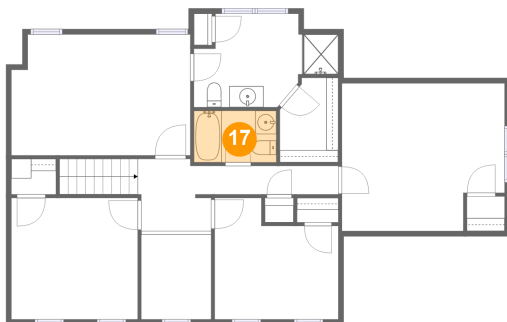
### 16 Floor 3 - W.I.C.



Max Dimensions: 5'6" x 8'0"  
Calculated Area: 41 sq. ft  
Included: Yes

Heated: Yes  
Finished: Yes  
Enclosed: Yes  
Contiguous: Yes  
Permitted: Yes  
Wet space: No  
Addition: No  
Conversion: No

### 17 Floor 3 - Bath

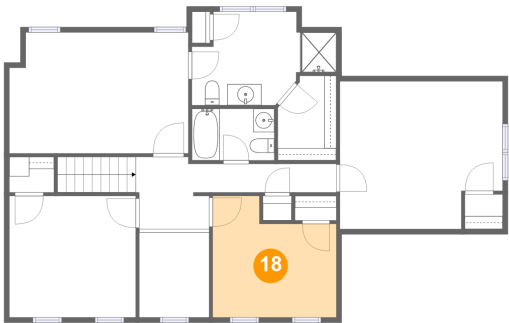


Max Dimensions: 7'10" x 4'11"  
Calculated Area: 38 sq. ft  
Included: Yes

Heated: Yes  
Finished: Yes  
Enclosed: Yes  
Contiguous: Yes  
Permitted: Yes  
Wet space: Yes  
Addition: No  
Conversion: No

22 Ches Mae Lane, Milford, Hillsborough County, New Hampshire, United States, 03055

**18** Floor 3 - Bedroom



Max Dimensions: 11'9" x 11'6"  
Calculated Area: 115 sq. ft  
Included: Yes

Heated: Yes  
Finished: Yes  
Enclosed: Yes  
Contiguous: Yes  
Permitted: Yes  
Wet space: No  
Addition: No  
Conversion: No