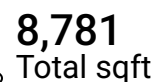
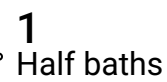
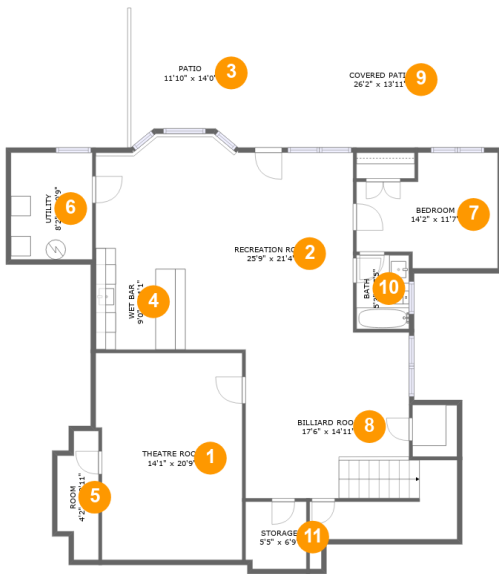


15815 Winterfield Way,Alpharetta,GA,US



Home report

15815 Winterfield Way,Alpharetta,GA,US



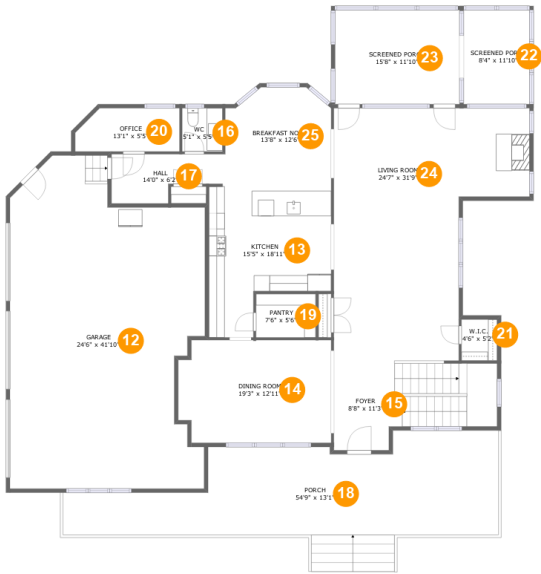
Room dimensions

Floor 1 Total sqft: 2202 Living area: 1643

| # | | Dimensions | sqft | Counted as living area |
|----|-----------------|----------------|------------|------------------------|
| 1 | Theatre Room | 14'1" x 20'9" | 296 sq. ft | Yes |
| 2 | Recreation Room | 25'9" x 21'4" | 435 sq. ft | Yes |
| 3 | Patio | 11'10" x 14'0" | 150 sq. ft | No |
| 4 | Wet Bar | 9'0" x 11'1" | 100 sq. ft | Yes |
| 5 | Room | 4'2" x 12'11" | 45 sq. ft | Yes |
| 6 | Utility | 8'2" x 10'9" | 87 sq. ft | Yes |
| 7 | Bedroom | 14'2" x 11'7" | 137 sq. ft | Yes |
| 8 | Billiard Room | 17'6" x 14'11" | 248 sq. ft | Yes |
| 9 | Covered Patio | 26'2" x 13'11" | 366 sq. ft | No |
| 10 | Bath | 5'3" x 7'5" | 39 sq. ft | Yes |
| 11 | Storage | 5'5" x 6'9" | 41 sq. ft | No |

Home report

15815 Winterfield Way,Alpharetta,GA,US



Room dimensions

Floor 2 Total sqft: 3621 Living area: 1814

| # | | Dimensions | sqft | Counted as living area |
|----|----------------|----------------|------------|------------------------|
| 12 | Garage | 24'6" x 41'10" | 886 sq. ft | No |
| 13 | Kitchen | 15'5" x 18'11" | 235 sq. ft | Yes |
| 14 | Dining Room | 19'3" x 12'11" | 239 sq. ft | Yes |
| 15 | Foyer | 8'8" x 11'3" | 188 sq. ft | Yes |
| 16 | WC | 5'1" x 5'5" | 28 sq. ft | Yes |
| 17 | Hall | 14'0" x 6'2" | 70 sq. ft | Yes |
| 18 | Porch | 54'9" x 13'1" | 568 sq. ft | No |
| 19 | Pantry | 7'6" x 5'6" | 41 sq. ft | Yes |
| 20 | Office | 13'1" x 5'5" | 67 sq. ft | Yes |
| 21 | W.I.C. | 4'6" x 5'2" | 23 sq. ft | Yes |
| 22 | Screened Porch | 8'4" x 11'10" | 98 sq. ft | No |

Home report

15815 Winterfield Way,Alpharetta,GA,US

| # | | Dimensions | sqft | Counted as living area |
|----|----------------|----------------|------------|------------------------|
| 23 | Screened Porch | 15'8" x 11'10" | 185 sq. ft | No |
| 24 | Living Room | 24'7" x 31'9" | 597 sq. ft | Yes |
| 25 | Breakfast Nook | 13'8" x 12'6" | 156 sq. ft | Yes |

Home report

15815 Winterfield Way,Alpharetta,GA,US



Room dimensions

Floor 3 Total sqft: 2958 Living area: 2800

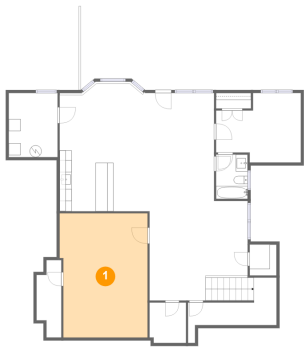
| # | | Dimensions | sqft | Counted as living area |
|----|------------------|----------------|------------|------------------------|
| 26 | Primary Bedroom | 15'5" x 28'4" | 421 sq. ft | Yes |
| 27 | W.I.C. | 4'6" x 5'2" | 23 sq. ft | Yes |
| 28 | Bedroom | 24'7" x 14'6" | 252 sq. ft | Yes |
| 29 | W.I.C. | 4'10" x 5'8" | 27 sq. ft | Yes |
| 30 | Screened Balcony | 15'8" x 12'5" | 139 sq. ft | No |
| 31 | Primary Bath | 24'3" x 13'6" | 248 sq. ft | Yes |
| 32 | Bath | 8'7" x 5'6" | 47 sq. ft | Yes |
| 33 | W.I.C. | 4'1" x 4'11" | 20 sq. ft | Yes |
| 34 | Exercise Room | 20'7" x 11'2" | 195 sq. ft | Yes |
| 35 | Bath | 9'3" x 10'5" | 74 sq. ft | Yes |
| 36 | W.I.C. | 17'10" x 8'11" | 135 sq. ft | Yes |

Home report

15815 Winterfield Way, Alpharetta, GA, US

| # | | Dimensions | sqft | Counted as living area |
|----|--------------|---------------|------------|------------------------|
| 37 | Laundry | 11'6" x 5'4" | 62 sq. ft | Yes |
| 38 | WC | 6'5" x 7'1" | 46 sq. ft | Yes |
| 39 | Bedroom | 12'6" x 15'9" | 156 sq. ft | Yes |
| 40 | Bath | 8'11" x 7'8" | 54 sq. ft | Yes |
| 41 | Utility | 3'7" x 2'8" | 10 sq. ft | Yes |
| 42 | Bath | 4'9" x 7'6" | 35 sq. ft | Yes |
| 43 | Bedroom | 24'7" x 11'8" | 207 sq. ft | Yes |
| 44 | Sitting Room | 23'5" x 16'6" | 414 sq. ft | Yes |
| 45 | Hall | 3'8" x 26'5" | 88 sq. ft | Yes |

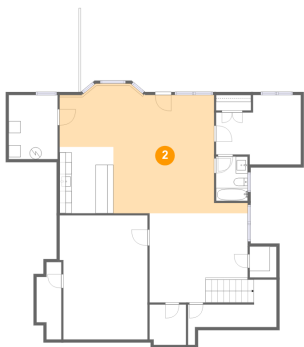
1 Floor 1 - Theatre Room



Dimensions: 14'1" x 20'9"
Area: 296 sq. ft
Counted as living area: Yes

Heated: Yes
Finished: Yes
Enclosed: Yes
Contiguous: Yes
Permitted: Yes
Wet space: No
Addition: No
Conversion: No

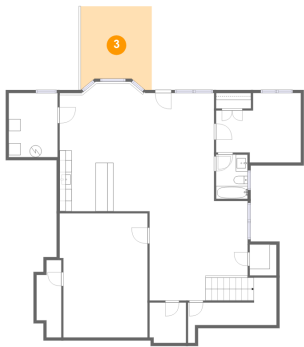
2 Floor 1 - Recreation Room



Dimensions: 25'9" x 21'4"
Area: 435 sq. ft
Counted as living area: Yes

Heated: Yes
Finished: Yes
Enclosed: Yes
Contiguous: Yes
Permitted: Yes
Wet space: No
Addition: No
Conversion: No

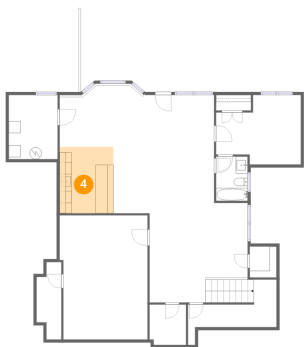
3 Floor 1 - Patio



Dimensions: 11'10" x 14'0"
Area: 150 sq. ft
Counted as living area: No

Heated: No
Finished: Yes
Enclosed: No
Contiguous: Yes
Permitted: Yes
Wet space: No
Addition: No
Conversion: No

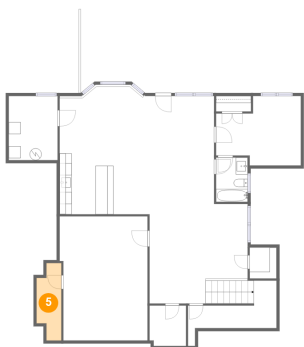
4 Floor 1 - Wet Bar



Dimensions: 9'0" x 11'1"
Area: 100 sq. ft
Counted as living area: Yes

Heated: Yes
Finished: Yes
Enclosed: Yes
Contiguous: Yes
Permitted: Yes
Wet space: No
Addition: No
Conversion: No

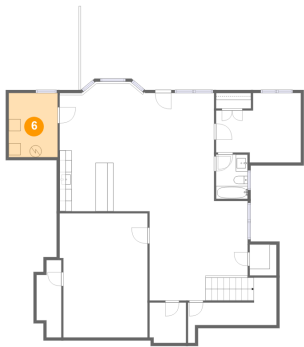
5 Floor 1 - Room



Dimensions: 4'2" x 12'11"
Area: 45 sq. ft
Counted as living area: Yes

Heated: Yes
Finished: Yes
Enclosed: Yes
Contiguous: Yes
Permitted: Yes
Wet space: No
Addition: No
Conversion: No

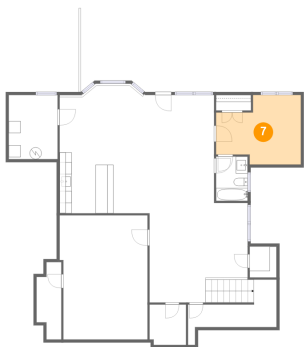
6 Floor 1 - Utility



Dimensions: 8'2" x 10'9"
Area: 87 sq. ft
Counted as living area: Yes

Heated: Yes
Finished: Yes
Enclosed: Yes
Contiguous: Yes
Permitted: Yes
Wet space: No
Addition: No
Conversion: No

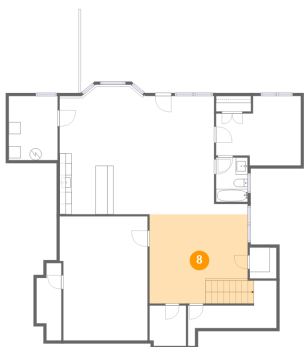
7 Floor 1 - Bedroom



Dimensions: 14'2" x 11'7"
Area: 137 sq. ft
Counted as living area: Yes

Heated: Yes
Finished: Yes
Enclosed: Yes
Contiguous: Yes
Permitted: Yes
Wet space: No
Addition: No
Conversion: No

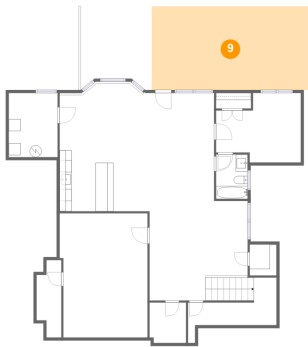
8 Floor 1 - Billiard Room



Dimensions: 17'6" x 14'11"
Area: 248 sq. ft
Counted as living area: Yes

Heated: Yes
Finished: Yes
Enclosed: Yes
Contiguous: Yes
Permitted: Yes
Wet space: No
Addition: No
Conversion: No

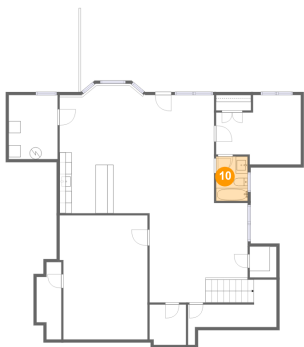
9 Floor 1 - Covered Patio



Dimensions: 26'2" x 13'11"
Area: 366 sq. ft
Counted as living area: No

Heated: No
Finished: Yes
Enclosed: No
Contiguous: Yes
Permitted: Yes
Wet space: No
Addition: No
Conversion: No

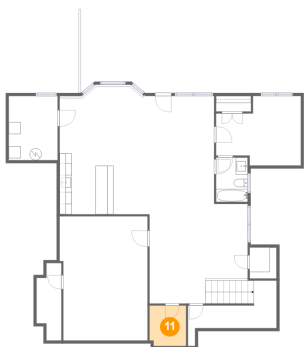
10 Floor 1 - Bath



Dimensions: 5'3" x 7'5"
Area: 39 sq. ft
Counted as living area: Yes

Heated: Yes
Finished: Yes
Enclosed: Yes
Contiguous: Yes
Permitted: Yes
Wet space: Yes
Addition: No
Conversion: No

11 Floor 1 - Storage



Dimensions: 5'5" x 6'9"
Area: 41 sq. ft
Counted as living area: No

Heated: No
Finished: No
Enclosed: No
Contiguous: Yes
Permitted: Yes
Wet space: No
Addition: No
Conversion: No

12 Floor 2 - Garage



Dimensions: 24'6" x 41'10"
Area: 886 sq. ft
Counted as living area: No

Heated: No
Finished: No
Enclosed: Yes
Contiguous: Yes
Permitted: Yes
Wet space: No
Addition: No
Conversion: No

13 Floor 2 - Kitchen



Dimensions: 15'5" x 18'11"
Area: 235 sq. ft
Counted as living area: Yes

Heated: Yes
Finished: Yes
Enclosed: Yes
Contiguous: Yes
Permitted: Yes
Wet space: No
Addition: No
Conversion: No

14 Floor 2 - Dining Room



Dimensions: 19'3" x 12'11"
Area: 239 sq. ft
Counted as living area: Yes

Heated: Yes
Finished: Yes
Enclosed: Yes
Contiguous: Yes
Permitted: Yes
Wet space: No
Addition: No
Conversion: No

15 Floor 2 - Foyer



Dimensions: 8'8" x 11'3"
Area: 188 sq. ft
Counted as living area: Yes

Heated: Yes
Finished: Yes
Enclosed: Yes
Contiguous: Yes
Permitted: Yes
Wet space: No
Addition: No
Conversion: No

16 Floor 2 - WC



Dimensions: 5'1" x 5'5"
Area: 28 sq. ft
Counted as living area: Yes

Heated: Yes
Finished: Yes
Enclosed: Yes
Contiguous: Yes
Permitted: Yes
Wet space: Yes
Addition: No
Conversion: No

17 Floor 2 - Hall



Dimensions: 14'0" x 6'2"
Area: 70 sq. ft
Counted as living area: Yes

Heated: Yes
Finished: Yes
Enclosed: Yes
Contiguous: Yes
Permitted: Yes
Wet space: No
Addition: No
Conversion: No

18 Floor 2 - Porch



Dimensions: 54'9" x 13'1"
Area: 568 sq. ft
Counted as living area: No

Heated: No
Finished: Yes
Enclosed: No
Contiguous: Yes
Permitted: Yes
Wet space: No
Addition: No
Conversion: No

19 Floor 2 - Pantry



Dimensions: 7'6" x 5'6"
Area: 41 sq. ft
Counted as living area: Yes

Heated: Yes
Finished: Yes
Enclosed: Yes
Contiguous: Yes
Permitted: Yes
Wet space: No
Addition: No
Conversion: No

20 Floor 2 - Office



Dimensions: 13'1" x 5'5"
Area: 67 sq. ft
Counted as living area: Yes

Heated: Yes
Finished: Yes
Enclosed: Yes
Contiguous: Yes
Permitted: Yes
Wet space: No
Addition: No
Conversion: No

21 Floor 2 - W.I.C.



Dimensions: 4'6" x 5'2"
Area: 23 sq. ft
Counted as living area: Yes

Heated: Yes
Finished: Yes
Enclosed: Yes
Contiguous: Yes
Permitted: Yes
Wet space: No
Addition: No
Conversion: No

22 Floor 2 - Screened Porch



Dimensions: 8'4" x 11'10"
Area: 98 sq. ft
Counted as living area: No

Heated: No
Finished: Yes
Enclosed: No
Contiguous: Yes
Permitted: Yes
Wet space: No
Addition: No
Conversion: No

23 Floor 2 - Screened Porch



Dimensions: 15'8" x 11'10"
Area: 185 sq. ft
Counted as living area: No

Heated: No
Finished: Yes
Enclosed: No
Contiguous: Yes
Permitted: Yes
Wet space: No
Addition: No
Conversion: No

24 Floor 2 - Living Room



Dimensions: 24'7" x 31'9"
Area: 597 sq. ft
Counted as living area: Yes

Heated: Yes
Finished: Yes
Enclosed: Yes
Contiguous: Yes
Permitted: Yes
Wet space: No
Addition: No
Conversion: No

25 Floor 2 - Breakfast Nook



Dimensions: 13'8" x 12'6"
Area: 156 sq. ft
Counted as living area: Yes

Heated: Yes
Finished: Yes
Enclosed: Yes
Contiguous: Yes
Permitted: Yes
Wet space: No
Addition: No
Conversion: No

26 Floor 3 - Primary Bedroom



Dimensions: 15'5" x 28'4"
Area: 421 sq. ft
Counted as living area: Yes

Heated: Yes
Finished: Yes
Enclosed: Yes
Contiguous: Yes
Permitted: Yes
Wet space: No
Addition: No
Conversion: No

27 Floor 3 - W.I.C.



Dimensions: 4'6" x 5'2"
Area: 23 sq. ft
Counted as living area: Yes

Heated: Yes
Finished: Yes
Enclosed: Yes
Contiguous: Yes
Permitted: Yes
Wet space: No
Addition: No
Conversion: No

28 Floor 3 - Bedroom



Dimensions: 24'7" x 14'6"
Area: 252 sq. ft
Counted as living area: Yes

Heated: Yes
Finished: Yes
Enclosed: Yes
Contiguous: Yes
Permitted: Yes
Wet space: No
Addition: No
Conversion: No

29 Floor 3 - W.I.C.



Dimensions: 4'10" x 5'8"
Area: 27 sq. ft
Counted as living area: Yes

Heated: Yes
Finished: Yes
Enclosed: Yes
Contiguous: Yes
Permitted: Yes
Wet space: No
Addition: No
Conversion: No

30 Floor 3 - Screened Balcony



Dimensions: 15'8" x 12'5"
Area: 139 sq. ft
Counted as living area: No

Heated: No
Finished: Yes
Enclosed: No
Contiguous: Yes
Permitted: Yes
Wet space: No
Addition: No
Conversion: No

31 Floor 3 - Primary Bath



Dimensions: 24'3" x 13'6"
Area: 248 sq. ft
Counted as living area: Yes

Heated: Yes
Finished: Yes
Enclosed: Yes
Contiguous: Yes
Permitted: Yes
Wet space: Yes
Addition: No
Conversion: No

32 Floor 3 - Bath



Dimensions: 8'7" x 5'6"
Area: 47 sq. ft
Counted as living area: Yes

Heated: Yes
Finished: Yes
Enclosed: Yes
Contiguous: Yes
Permitted: Yes
Wet space: Yes
Addition: No
Conversion: No

33 Floor 3 - W.I.C.



Dimensions: 4'1" x 4'11"
Area: 20 sq. ft
Counted as living area: Yes

Heated: Yes
Finished: Yes
Enclosed: Yes
Contiguous: Yes
Permitted: Yes
Wet space: No
Addition: No
Conversion: No

34 Floor 3 - Exercise Room



Dimensions: 20'7" x 11'2"
Area: 195 sq. ft
Counted as living area: Yes

Heated: Yes
Finished: Yes
Enclosed: Yes
Contiguous: Yes
Permitted: Yes
Wet space: No
Addition: No
Conversion: No

35 Floor 3 - Bath



Dimensions: 9'3" x 10'5"
Area: 74 sq. ft
Counted as living area: Yes

Heated: Yes
Finished: Yes
Enclosed: Yes
Contiguous: Yes
Permitted: Yes
Wet space: Yes
Addition: No
Conversion: No

36 Floor 3 - W.I.C.



Dimensions: 17'10" x 8'11"
Area: 135 sq. ft
Counted as living area: Yes

Heated: Yes
Finished: Yes
Enclosed: Yes
Contiguous: Yes
Permitted: Yes
Wet space: No
Addition: No
Conversion: No

37 Floor 3 - Laundry



Dimensions: 11'6" x 5'4"
Area: 62 sq. ft
Counted as living area: Yes

Heated: Yes
Finished: Yes
Enclosed: Yes
Contiguous: Yes
Permitted: Yes
Wet space: No
Addition: No
Conversion: No

38 Floor 3 - WC



Dimensions: 6'5" x 7'1"
Area: 46 sq. ft
Counted as living area: Yes

Heated: Yes
Finished: Yes
Enclosed: Yes
Contiguous: Yes
Permitted: Yes
Wet space: Yes
Addition: No
Conversion: No

39 Floor 3 - Bedroom



Dimensions: 12'6" x 15'9"
Area: 156 sq. ft
Counted as living area: Yes

Heated: Yes
Finished: Yes
Enclosed: Yes
Contiguous: Yes
Permitted: Yes
Wet space: No
Addition: No
Conversion: No

40 Floor 3 - Bath



Dimensions: 8'11" x 7'8"
Area: 54 sq. ft
Counted as living area: Yes

Heated: Yes
Finished: Yes
Enclosed: Yes
Contiguous: Yes
Permitted: Yes
Wet space: Yes
Addition: No
Conversion: No

41 Floor 3 - Utility



Dimensions: 3'7" x 2'8"
Area: 10 sq. ft
Counted as living area: Yes

Heated: Yes
Finished: Yes
Enclosed: Yes
Contiguous: Yes
Permitted: Yes
Wet space: No
Addition: No
Conversion: No

42 Floor 3 - Bath



Dimensions: 4'9" x 7'6"
Area: 35 sq. ft
Counted as living area: Yes

Heated: Yes
Finished: Yes
Enclosed: Yes
Contiguous: Yes
Permitted: Yes
Wet space: Yes
Addition: No
Conversion: No

43 Floor 3 - Bedroom



Dimensions: 24'7" x 11'8"
Area: 207 sq. ft
Counted as living area: Yes

Heated: Yes
Finished: Yes
Enclosed: Yes
Contiguous: Yes
Permitted: Yes
Wet space: No
Addition: No
Conversion: No

44 Floor 3 - Sitting Room



Dimensions: 23'5" x 16'6"
Area: 414 sq. ft
Counted as living area: Yes

Heated: Yes
Finished: Yes
Enclosed: Yes
Contiguous: Yes
Permitted: Yes
Wet space: No
Addition: No
Conversion: No

45 Floor 3 - Hall



Dimensions: 3'8" x 26'5"
Area: 88 sq. ft
Counted as living area: Yes

Heated: Yes
Finished: Yes
Enclosed: Yes
Contiguous: Yes
Permitted: Yes
Wet space: No
Addition: No
Conversion: No