



Scheafferstown/Iona/Bufalo Springs Area Real Estate

PUBLIC AUCTION

Thursday Oct. 24th 2024 5pm)

Located: 120 Duquesne Dr. Lebanon PA 17042

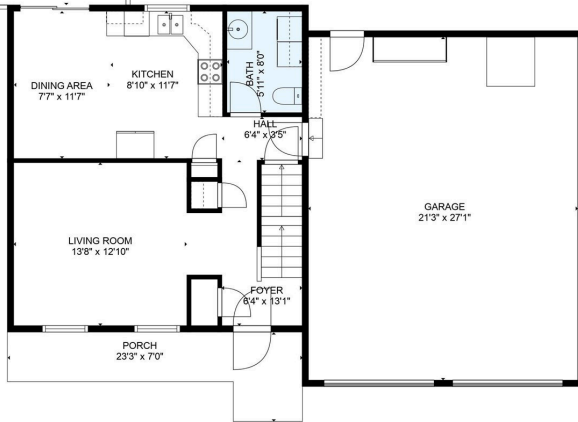
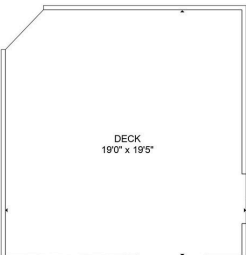


Scheafferstown/Iona/Bufalo Springs Area, Clean 2 Story Home on 1.01 Acres. Features an Eat-In Kitchen w/access to a 20x20 Deck, Living Room, First Floor Laundry and ½ Bath. The upper level has 3 Bedrooms & a Full Bath. 1248 Sq Ft Living Area, CA, Partly Finished Full Basement, 2 Car Attached Garage and a 28x28 2 Car Detached Garage. Heat Pump For Heat & A/C, New House roof, Shed roof replaced in 2022. Well, Public Sewer, ELCO Schools, Taxes \$4208

Note: A well-kept home in the desirable neighborhood of the Esquire Estates boasting an acre of land with a detached garage/shed for your extra cars/hobbies/storage etc...Come prepared to buy. Sellers have purchased a farm and property must be sold! Nice Setting With Great Location

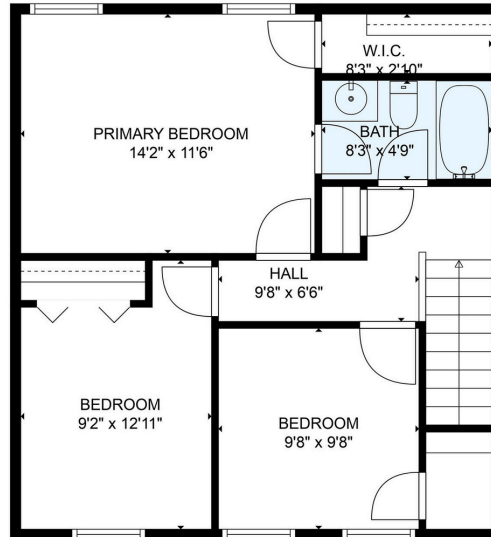
Terms: 10% Down Day Of Sale Balance Within 45 Days

OPEN HOUSE DATES: Sat. Oct. 5th & 12th 1-3pm



TOTAL: 1130 sq. ft.
BELOW GROUND: 0 sq. ft, FLOOR 2: 565 sq. ft, FLOOR 3: 565 sq. ft
EXCLUDED AREAS: STORAGE: 94 sq. ft, BASEMENT: 548 sq. ft, GARAGE: 574 sq. ft,
DECK: 364 sq. ft, PORCH: 108 sq. ft

MEASUREMENTS ARE DEEMED RELIABLE BUT ARE NOT GUARANTEED.



TOTAL: 1130 sq. ft.
BELOW GROUND: 0 sq. ft, FLOOR 2: 565 sq. ft, FLOOR 3: 565 sq. ft
EXCLUDED AREAS: STORAGE: 94 sq. ft, BASEMENT: 548 sq. ft, GARAGE: 574 sq. ft,
DECK: 364 sq. ft, PORCH: 108 sq. ft



Sale For: Austin & Kaitlyn Hurst
Auctioneers: L&H AUCTIONS INC.

PA-AU002453

Les Longenecker 484-256-1323

Joel Heisey 717-383-5806

heiseyauctions.com