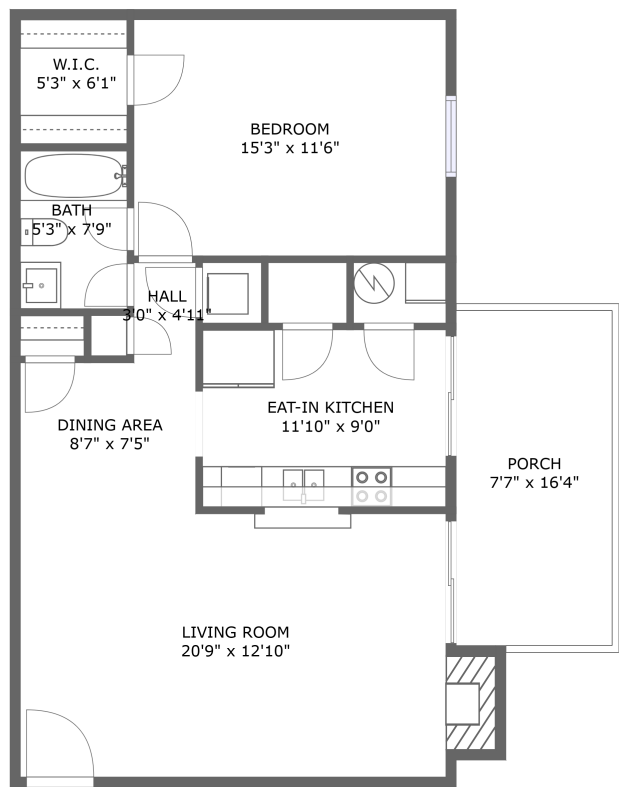



Home report

2501 Gatehouse Ln,Salem,Virginia,United States




FLOOR 1


Property summary




0
Garages




1
Bedrooms




1
Bathrooms




0
Half baths



1
Floors



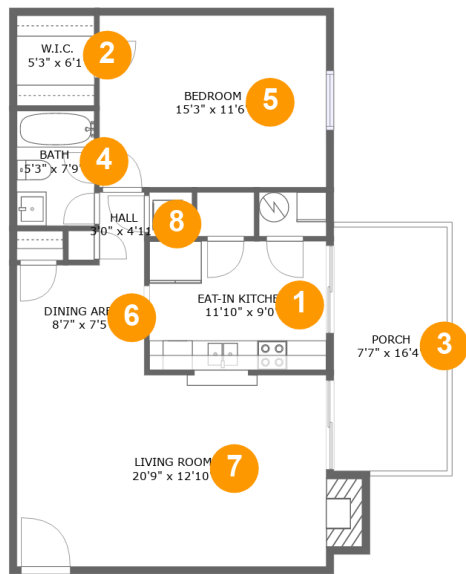
773
Gross living
area sqft



912
Total sqft

Home report

2501 Gatehouse Ln,Salem,Virginia,United States

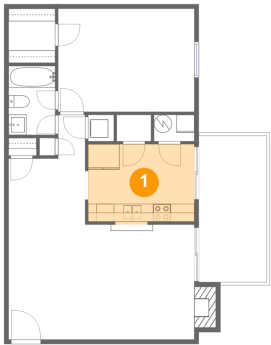


Room dimensions

Floor 1 Total sqft: 912 Living area: 773

#		Dimensions	sqft	Counted as living area
1	Eat-in Kitchen	11'10" x 9'0"	104 sq. ft	Yes
2	W.I.C.	5'3" x 6'1"	32 sq. ft	Yes
3	Porch	7'7" x 16'4"	125 sq. ft	No
4	Bath	5'3" x 7'9"	40 sq. ft	Yes
5	Bedroom	15'3" x 11'6"	176 sq. ft	Yes
6	Dining Area	8'7" x 7'5"	63 sq. ft	Yes
7	Living Room	20'9" x 12'10"	278 sq. ft	Yes
8	Hall	3'0" x 4'11"	15 sq. ft	Yes

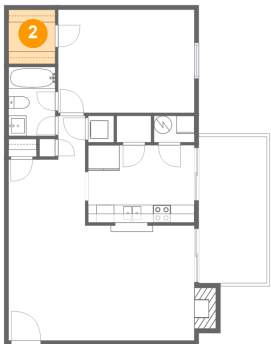
1 Floor 1 - Eat-in Kitchen



Dimensions: 11'10" x 9'0"
Area: 104 sq. ft
Counted as living area: Yes

Heated: Yes
Finished: Yes
Enclosed: Yes
Contiguous: Yes
Permitted: Yes
Wet space: No
Addition: No
Conversion: No

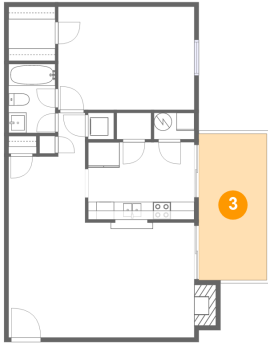
2 Floor 1 - W.I.C.



Dimensions: 5'3" x 6'1"
Area: 32 sq. ft
Counted as living area: Yes

Heated: Yes
Finished: Yes
Enclosed: Yes
Contiguous: Yes
Permitted: Yes
Wet space: No
Addition: No
Conversion: No

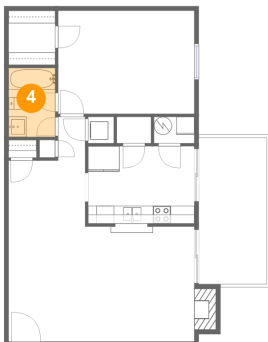
3 Floor 1 - Porch



Dimensions: 7'7" x 16'4"
Area: 125 sq. ft
Counted as living area: No

Heated: No
Finished: Yes
Enclosed: No
Contiguous: No
Permitted: Yes
Wet space: No
Addition: No
Conversion: No

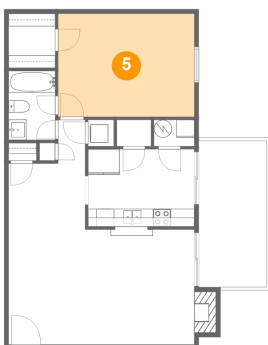
4 Floor 1 - Bath



Dimensions: 5'3" x 7'9"
Area: 40 sq. ft
Counted as living area: Yes

Heated: Yes
Finished: Yes
Enclosed: Yes
Contiguous: Yes
Permitted: Yes
Wet space: Yes
Addition: No
Conversion: No

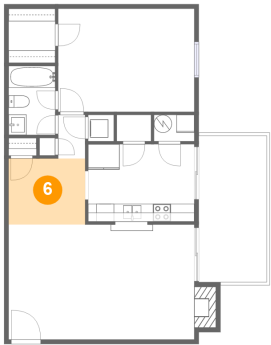
5 Floor 1 - Bedroom



Dimensions: 15'3" x 11'6"
Area: 176 sq. ft
Counted as living area: Yes

Heated: Yes
Finished: Yes
Enclosed: Yes
Contiguous: Yes
Permitted: Yes
Wet space: No
Addition: No
Conversion: No

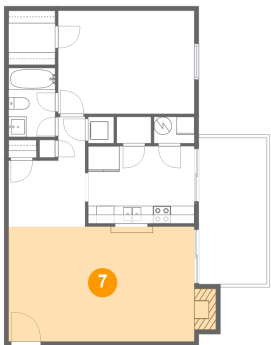
6 Floor 1 - Dining Area



Dimensions: 8'7" x 7'5"
Area: 63 sq. ft
Counted as living area: Yes

Heated: Yes
Finished: Yes
Enclosed: Yes
Contiguous: Yes
Permitted: Yes
Wet space: No
Addition: No
Conversion: No

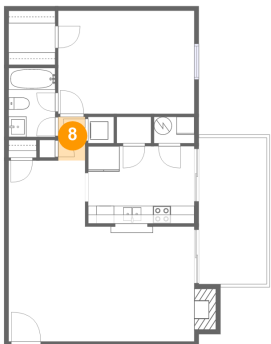
7 Floor 1 - Living Room



Dimensions: 20'9" x 12'10"
Area: 278 sq. ft
Counted as living area: Yes

Heated: Yes
Finished: Yes
Enclosed: Yes
Contiguous: Yes
Permitted: Yes
Wet space: No
Addition: No
Conversion: No

8 Floor 1 - Hall



Dimensions: 3'0" x 4'11"
Area: 15 sq. ft
Counted as living area: Yes

Heated: Yes
Finished: Yes
Enclosed: Yes
Contiguous: Yes
Permitted: Yes
Wet space: No
Addition: No
Conversion: No