


Home report


48 Maple Avenue, Collinsville, Hartford County, Connecticut,  
United States, 06019




Property summary




**0**  
Garages



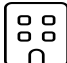
**6**  
Bedrooms




**3**  
Bathrooms




**0**  
Half baths



**3**  
Floors



**2,664**  
Gross living  
area sqft



**3,091**  
Total sqft

Home report

48 Maple Avenue, Collinsville, Hartford County, Connecticut,  
United States, 06019



Room dimensions

Floor 1 Total sqft: 1800 Living area: 1438

#		Max Dimensions	sqft	Included
1	Hall	4'9" x 3'6"	17 sq. ft	Yes
2	Bath	7'5" x 5'0"	37 sq. ft	Yes
3	Dining Room	10'8" x 13'5"	142 sq. ft	Yes
4	Family Room	14'10" x 12'3"	182 sq. ft	Yes
5	Dining Area	7'1" x 6'8"	47 sq. ft	Yes
6	Deck	5'9" x 9'11"	88 sq. ft	No
7	Foyer	6'0" x 11'8"	70 sq. ft	Yes
8	Primary Bedroom	14'9" x 12'11"	139 sq. ft	Yes
9	Porch	26'4" x 6'0"	168 sq. ft	No
10	Kitchen	14'10" x 13'6"	175 sq. ft	Yes
11	Bath	7'2" x 10'3"	72 sq. ft	Yes

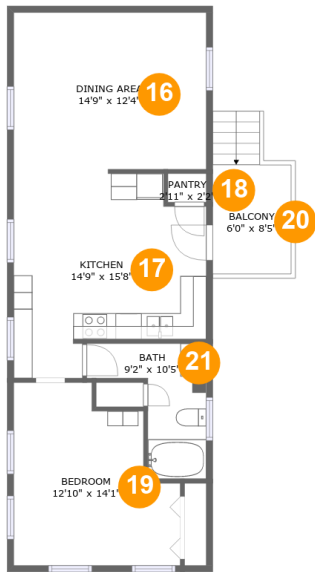
## Home report

**48 Maple Avenue, Collinsville, Hartford County, Connecticut,  
United States, 06019**

#		Max Dimensions	sqft	Included
12	Living Room	12'11" x 11'8"	152 sq. ft	Yes
13	Bedroom	6'2" x 10'8"	66 sq. ft	Yes
14	Kitchen	8'5" x 13'5"	113 sq. ft	Yes
15	Covered Patio	15'0" x 6'3"	106 sq. ft	No

Home report

48 Maple Avenue, Collinsville, Hartford County, Connecticut,  
United States, 06019

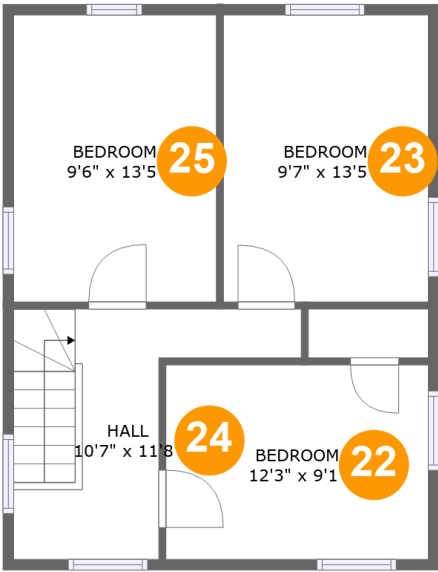


Room dimensions

Floor 2 Total sqft: 752    Living area: 687

#		Max Dimensions	sqft	Included
16	Dining Area	14'9" x 12'4"	181 sq. ft	Yes
17	Kitchen	14'9" x 15'8"	195 sq. ft	Yes
18	Pantry	2'11" x 2'2"	6 sq. ft	Yes
19	Bedroom	12'10" x 14'1"	149 sq. ft	Yes
20	Balcony	6'0" x 8'5"	65 sq. ft	No
21	Bath	9'2" x 10'5"	59 sq. ft	Yes

48 Maple Avenue, Collinsville, Hartford County, Connecticut,  
United States, 06019



Room dimensions

Floor 3 Total sqft: 539    Living area: 539

#		Max Dimensions	sqft	Included
22	Bedroom	12'3" x 9'1"	111 sq. ft	Yes
23	Bedroom	9'7" x 13'5"	128 sq. ft	Yes
24	Hall	10'7" x 11'8"	95 sq. ft	Yes
25	Bedroom	9'6" x 13'5"	127 sq. ft	Yes

48 Maple Avenue, Collinsville, Hartford County, Connecticut,  
United States, 06019

1 Floor 1 - Hall



Max Dimensions: 4'9" x 3'6"  
Calculated Area: 17 sq. ft  
Included: Yes

Heated: Yes  
Finished: Yes  
Enclosed: Yes  
Contiguous: Yes  
Permitted: Yes  
Wet space: No  
Addition: No  
Conversion: No

2 Floor 1 - Bath



Max Dimensions: 7'5" x 5'0"  
Calculated Area: 37 sq. ft  
Included: Yes

Heated: Yes  
Finished: Yes  
Enclosed: Yes  
Contiguous: Yes  
Permitted: Yes  
Wet space: Yes  
Addition: No  
Conversion: No

48 Maple Avenue, Collinsville, Hartford County, Connecticut,  
United States, 06019

3 Floor 1 - Dining Room



Max Dimensions: 10'8" x 13'5"  
Calculated Area: 142 sq. ft  
Included: Yes

Heated: Yes  
Finished: Yes  
Enclosed: Yes  
Contiguous: Yes  
Permitted: Yes  
Wet space: No  
Addition: No  
Conversion: No

4 Floor 1 - Family Room



Max Dimensions: 14'10" x 12'3"  
Calculated Area: 182 sq. ft  
Included: Yes

Heated: Yes  
Finished: Yes  
Enclosed: Yes  
Contiguous: Yes  
Permitted: Yes  
Wet space: No  
Addition: No  
Conversion: No

5 Floor 1 - Dining Area



Max Dimensions: 7'1" x 6'8"  
Calculated Area: 47 sq. ft  
Included: Yes

Heated: Yes  
Finished: Yes  
Enclosed: Yes  
Contiguous: Yes  
Permitted: Yes  
Wet space: No  
Addition: No  
Conversion: No

48 Maple Avenue, Collinsville, Hartford County, Connecticut,  
United States, 06019

6 Floor 1 - Deck



Max Dimensions: 5'9" x 9'11"  
Calculated Area: 88 sq. ft  
Included: No

Heated: No  
Finished: Yes  
Enclosed: No  
Contiguous: Yes  
Permitted: Yes  
Wet space: No  
Addition: No  
Conversion: No

7 Floor 1 - Foyer



Max Dimensions: 6'0" x 11'8"  
Calculated Area: 70 sq. ft  
Included: Yes

Heated: Yes  
Finished: Yes  
Enclosed: Yes  
Contiguous: Yes  
Permitted: Yes  
Wet space: No  
Addition: No  
Conversion: No

8 Floor 1 - Primary Bedroom



Max Dimensions: 14'9" x 12'11"  
Calculated Area: 139 sq. ft  
Included: Yes

Heated: Yes  
Finished: Yes  
Enclosed: Yes  
Contiguous: Yes  
Permitted: Yes  
Wet space: No  
Addition: No  
Conversion: No



48 Maple Avenue, Collinsville, Hartford County, Connecticut,  
United States, 06019

9 Floor 1 - Porch



Max Dimensions: 26'4" x 6'0"  
Calculated Area: 168 sq. ft  
Included: No

Heated: No  
Finished: Yes  
Enclosed: No  
Contiguous: Yes  
Permitted: Yes  
Wet space: No  
Addition: No  
Conversion: No

10 Floor 1 - Kitchen



Max Dimensions: 14'10" x 13'6"  
Calculated Area: 175 sq. ft  
Included: Yes

Heated: Yes  
Finished: Yes  
Enclosed: Yes  
Contiguous: Yes  
Permitted: Yes  
Wet space: No  
Addition: No  
Conversion: No

11 Floor 1 - Bath



Max Dimensions: 7'2" x 10'3"  
Calculated Area: 72 sq. ft  
Included: Yes

Heated: Yes  
Finished: Yes  
Enclosed: Yes  
Contiguous: Yes  
Permitted: Yes  
Wet space: Yes  
Addition: No  
Conversion: No

48 Maple Avenue, Collinsville, Hartford County, Connecticut,  
United States, 06019

12 Floor 1 - Living Room



Max Dimensions: 12'11" x 11'8"  
Calculated Area: 152 sq. ft  
Included: Yes

Heated: Yes  
Finished: Yes  
Enclosed: Yes  
Contiguous: Yes  
Permitted: Yes  
Wet space: No  
Addition: No  
Conversion: No

13 Floor 1 - Bedroom



Max Dimensions: 6'2" x 10'8"  
Calculated Area: 66 sq. ft  
Included: Yes

Heated: Yes  
Finished: Yes  
Enclosed: Yes  
Contiguous: Yes  
Permitted: Yes  
Wet space: No  
Addition: No  
Conversion: No

14 Floor 1 - Kitchen



Max Dimensions: 8'5" x 13'5"  
Calculated Area: 113 sq. ft  
Included: Yes

Heated: Yes  
Finished: Yes  
Enclosed: Yes  
Contiguous: Yes  
Permitted: Yes  
Wet space: No  
Addition: No  
Conversion: No

48 Maple Avenue, Collinsville, Hartford County, Connecticut,  
United States, 06019

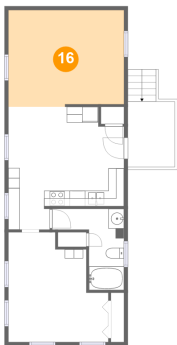
15 Floor 1 - Covered Patio



Max Dimensions: 15'0" x 6'3"  
Calculated Area: 106 sq. ft  
Included: No

Heated: No  
Finished: Yes  
Enclosed: No  
Contiguous: Yes  
Permitted: Yes  
Wet space: No  
Addition: No  
Conversion: No

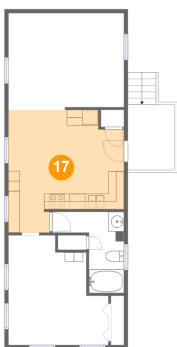
16 Floor 2 - Dining Area



Max Dimensions: 14'9" x 12'4"  
Calculated Area: 181 sq. ft  
Included: Yes

Heated: Yes  
Finished: Yes  
Enclosed: Yes  
Contiguous: Yes  
Permitted: Yes  
Wet space: No  
Addition: No  
Conversion: No

17 Floor 2 - Kitchen

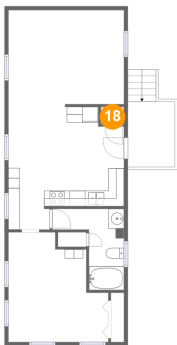


Max Dimensions: 14'9" x 15'8"  
Calculated Area: 195 sq. ft  
Included: Yes

Heated: Yes  
Finished: Yes  
Enclosed: Yes  
Contiguous: Yes  
Permitted: Yes  
Wet space: No  
Addition: No  
Conversion: No

48 Maple Avenue, Collinsville, Hartford County, Connecticut,  
United States, 06019

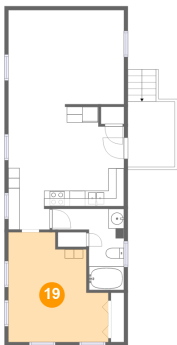
18 Floor 2 - Pantry



Max Dimensions: 2'11" x 2'2"  
Calculated Area: 6 sq. ft  
Included: Yes

Heated: Yes  
Finished: Yes  
Enclosed: Yes  
Contiguous: Yes  
Permitted: Yes  
Wet space: No  
Addition: No  
Conversion: No

19 Floor 2 - Bedroom



Max Dimensions: 12'10" x 14'1"  
Calculated Area: 149 sq. ft  
Included: Yes

Heated: Yes  
Finished: Yes  
Enclosed: Yes  
Contiguous: Yes  
Permitted: Yes  
Wet space: No  
Addition: No  
Conversion: No

20 Floor 2 - Balcony

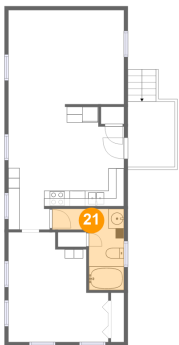


Max Dimensions: 6'0" x 8'5"  
Calculated Area: 65 sq. ft  
Included: No

Heated: No  
Finished: Yes  
Enclosed: No  
Contiguous: Yes  
Permitted: Yes  
Wet space: No  
Addition: No  
Conversion: No

48 Maple Avenue, Collinsville, Hartford County, Connecticut,  
United States, 06019

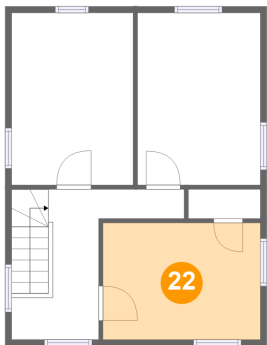
21 Floor 2 - Bath



Max Dimensions: 9'2" x 10'5"  
Calculated Area: 59 sq. ft  
Included: Yes

Heated: Yes  
Finished: Yes  
Enclosed: Yes  
Contiguous: Yes  
Permitted: Yes  
Wet space: Yes  
Addition: No  
Conversion: No

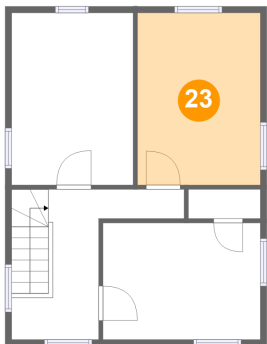
22 Floor 3 - Bedroom



Max Dimensions: 12'3" x 9'1"  
Calculated Area: 111 sq. ft  
Included: Yes

Heated: Yes  
Finished: Yes  
Enclosed: Yes  
Contiguous: Yes  
Permitted: Yes  
Wet space: No  
Addition: No  
Conversion: No

23 Floor 3 - Bedroom

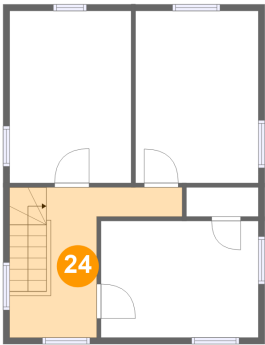


Max Dimensions: 9'7" x 13'5"  
Calculated Area: 128 sq. ft  
Included: Yes

Heated: Yes  
Finished: Yes  
Enclosed: Yes  
Contiguous: Yes  
Permitted: Yes  
Wet space: No  
Addition: No  
Conversion: No

48 Maple Avenue, Collinsville, Hartford County, Connecticut,  
United States, 06019

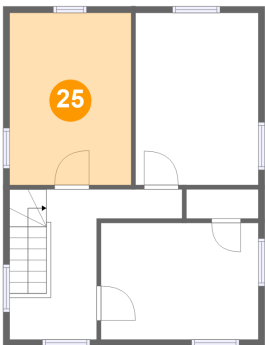
24 Floor 3 - Hall



Max Dimensions: 10'7" x 11'8"  
Calculated Area: 95 sq. ft  
Included: Yes

Heated: Yes  
Finished: Yes  
Enclosed: Yes  
Contiguous: Yes  
Permitted: Yes  
Wet space: No  
Addition: No  
Conversion: No

25 Floor 3 - Bedroom



Max Dimensions: 9'6" x 13'5"  
Calculated Area: 127 sq. ft  
Included: Yes

Heated: Yes  
Finished: Yes  
Enclosed: Yes  
Contiguous: Yes  
Permitted: Yes  
Wet space: No  
Addition: No  
Conversion: No